



Southern Regional Assembly RSES

Tionól Reigiúnach an Deiscirt SRSE

20th November, 2018 / 20ú Samhain, 2018

Dominic Walsh

Oifigeach Pleanála Réigiúnach / Regional Planning Officer



What is a Regional Spatial and Economic Strategy (RSES)?

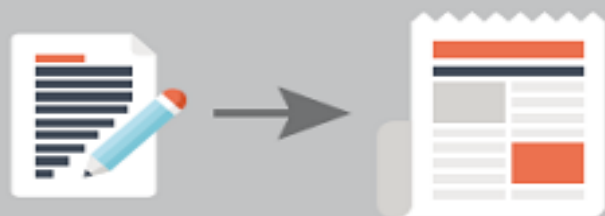
- Each Regional Assembly has to prepare a **long-term (12-20 years) Regional Spatial and Economic Strategy (RSES)** for the whole of their region;
- Strategic policy document to set out a **vision for the strategic planning and economic development of the region to 2031**
- Overarching purpose of the RSES is to support the **implementation of the National Planning Framework (NPF)**;
- Sets the **framework for local planning and economic development**
 - strategic choices at the regional level
- Adoption of the RSES is a ***Reserved Function*** which requires the approval of the members of the Assembly.



Local Government

Local Area
Plan or SDZ

City & County
Development Plans



Local Economic and
Community Plans



Regional Assembly

Regional Spatial &
Economic Strategy



Other regional plans and
programmes i.e.
regional enterprise strategies



Government Department

National Planning
Framework



Action Plan for jobs

Scope and Content of RSES

An Integrated **Spatial** and **Economic Strategy** for the Southern Region

Settlement
Communications
Commerce **Rural** Environment
Culture Towns
Water Social Healthcare
Facilities Energy Regional
Jobs Cities Education
Marine Housing Community
Employment Sport Economy
Transport



Tionól Réigiúnach an Deiscirt
Southern Regional Assembly

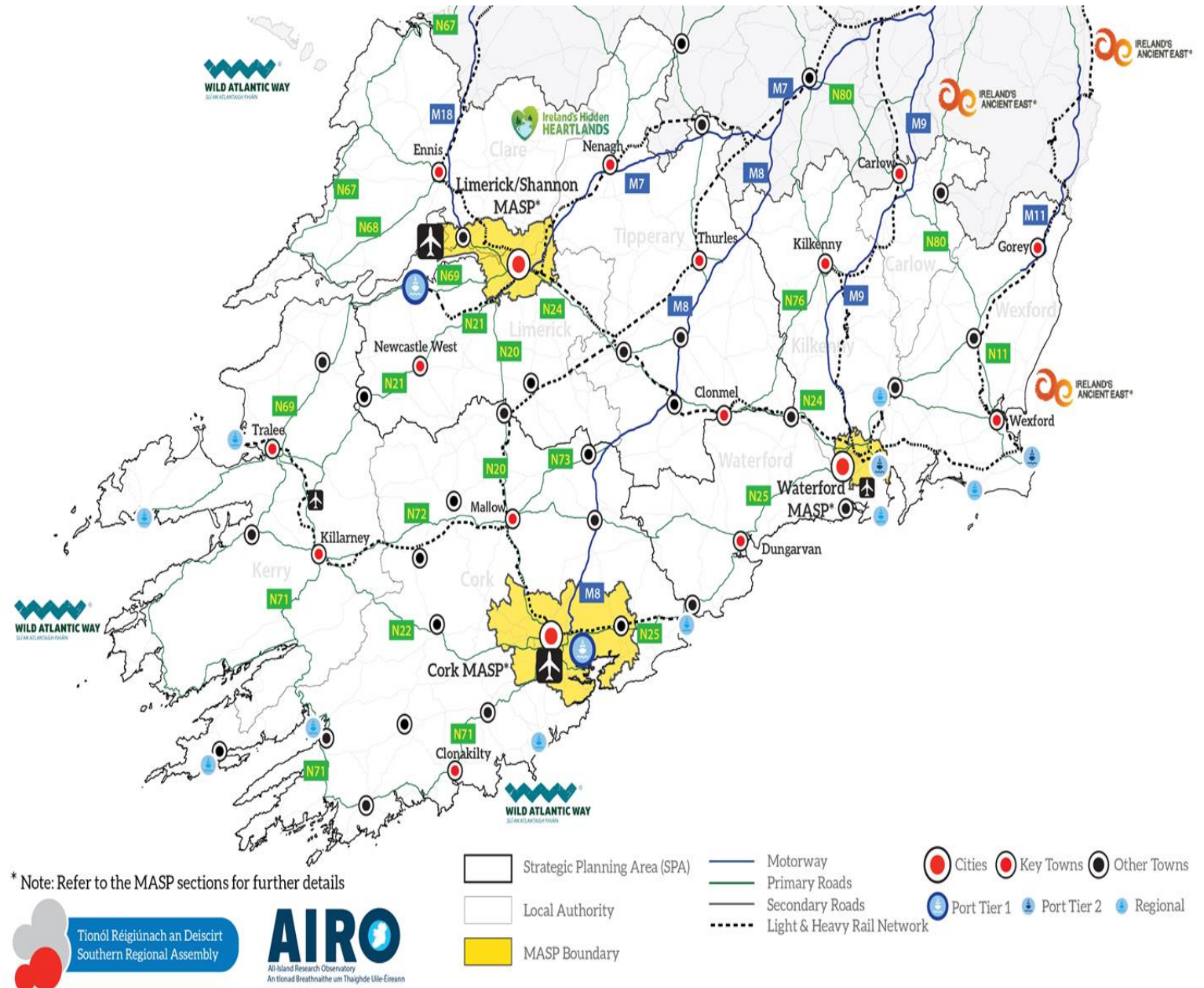
THE SOUTHERN REGION'S STRATEGY IS TO..... BUILD A STRONG, RESILIENT, SUSTAINABLE REGION BY:

- **Connecting our Region** – enhanced infrastructure from **North to South** and **East Coast to West Coast**, connecting to the **Atlantic Economic Corridor**.
- **Delivering Ambitious growth targets for our Cities**, creating the **Greenest** and **most Liveable Metropolitan Areas** for diverse communities, culture and enterprise
- Supporting growth of **Key Towns** as significant **centres for employment and public services**
- **Creating an inclusive and Learning Region**, establishing the new technological universities of **MTU** and **TUSE** and developing a Smart Region, enhancing public services and community infrastructure.
- The Southern Region as **Ireland's International Gateway** at Cork and Shannon Airports and our Sea Ports.
- Making the most of **Cork and Waterford Harbours and the Shannon Estuary** – our natural maritime assets.
- **Harnessing our Environment and Heritage** – along the **Wild Atlantic Way**, into **Ireland's Hidden Heartlands**, through **Ireland's Ancient East**, in the **Gaeltacht and islands**, along the **Blueways and Greenways**.
- **Revitalising Rural Areas** through re purposing our small towns and villages and increased collaboration between networks of settlements.
- **Taking the rights steps** in sustainable travel, energy and in bio-economy to **lead on Climate Action** in the state's transition to a Low Carbon Economy.
- The Strategy relates to the **NPF National Strategic Outcomes** - and **UN Sustainable Development Goals**



Developing Our Regional Assets

- **1,585,906 Population**- almost 10% growth 2006-2016 and over a third of the State's total population living here.
- **Three Cities of regional and international significance**, including State's 2nd largest City of Cork and the cities of Limerick and Waterford, all of which are projected to be amongst the fastest growing locations in the State over the next 20 years plus.
- 14 Key Towns – employment and service centres, key to strengthening the region's urban structure
- Two State **Airports** and Two **Regional Airports**
- **All Tier 1 and Tier 2 Ports of National Significance** outside of Dublin
- **Two Universities, Five Institutes of technology**
- Diverse Industrial Base with established clusters and specialism's
- Over **648,000 of the labour-force** in the region at work, almost a third of the State's total at work.
- Two **UNESCO Learning Cities**
- Three **WHO Healthy Cities**
- Three **Smart Gateway Cities**
- Productive **agricultural region** and rural areas supported by a significant network of towns and villages.
- Clean **Renewable Energy Potential**
- Extensive coastline with significant **Marine Resource potential**
- A region possessing all three of the **Wild Atlantic Way, Ireland's Ancient East and Hidden Heartlands Tourism Corridors**



Supporting Implementation of Department of Transport, Tourism and Sport's Policy *People, Place and Policy - Growing Tourism To 2025*

RSES policies will address areas in the policy relevant to the planning of tourism namely;

- Targeting **high growth potential areas**;
- Incorporate **Cultural and Sports-based Offerings**;
- Respecting **Brand Architecture and the Environment**;
- Need to **optimise Air and Sea Connections**;
- Need to **facilitate inter-modal**
- **transport transfers**;
- Support for **Cross-Border Tourism**.



SPECIFIC RSES OBJECTIVES FOR TOURISM

- Enhance **provision of tourism and leisure amenity** to cater for increased population in the Region including **recreation, entertainment, cultural, catering, accommodation, transport and water infrastructure** inter alia;
- Promote **activity tourism**;
- **Sustainably develop the road network and public transport services** and facilities for **improved visitor access**, longer dwell times due to **improved connectivity to ports and airports** and tourism growth;

- **Sustainable development of walking and cycling trails** opening greater **accessibility to the marine and countryside & environment** by sustainable modes and promote the sustainable **designation and delivery of Greenway and Blueway Corridors.**
- **Identify and map catchment areas concerning Culture, Heritage and Tourism of Regional significance/scale.**
- Building on **WAW, IAE and IHH** to develop catchment areas - have the **potential to deliver small scale economic development and using wider local services** such as Post Offices and local public transport.
- **development of specific monitoring protocols for visitor pressure to ensure that tourism activities are maintained within sustainable limits** for the European sites in the region.



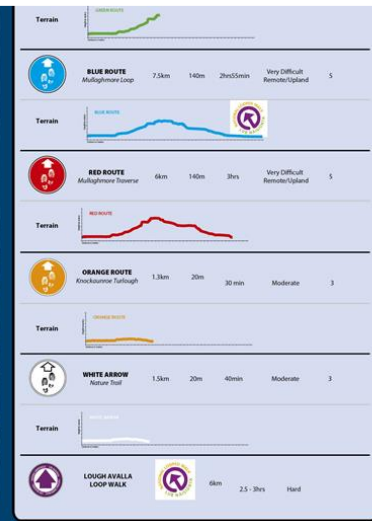
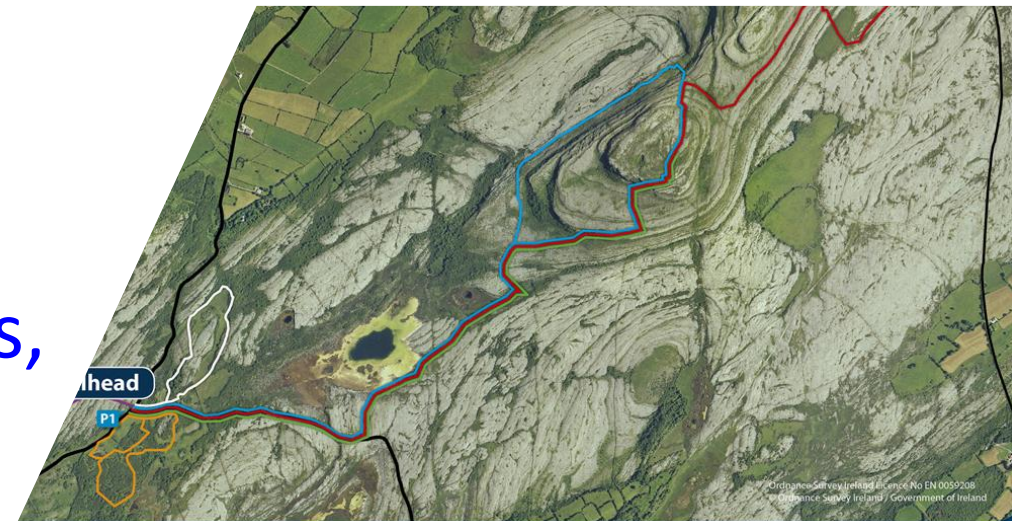
OTHER SECTIONS IN DRAFT RSES ON...

- International Connectivity through Port and Airports
- Regional Transport infrastructure and public transport services
- Enabling infrastructure for development of the cultural and creative sector
- Regional Recreational and Sporting Facilities



Policies to:-

- Promote Recreational Access to National Parks and Countryside
- Protection of natural amenities & biodiversity
- The Gaeltacht and Linguistic Heritage
- Development of Trails, Walkways and Linier Parks
- Development of Greenways, Blueways and Peatways



Built Heritage

- Support work of OPW at Heritage Sites
- Support for built heritage
- Supporting Urban regeneration
- Bringing streets/buildings back to life
- **Town centre Health Checks - 7 Participating Towns Nationally including:**
 - **Cashel, Ennis & Tralee**
 - Highlights important role of historic town centres to create vibrant attractive places



RELATED AREAS – Key Sections on...

- PLACE-MAKING FOR THE CITIES, TOWNS AND VILLAGES
 - Vision for significant growth in the Metropolitan Areas
 - RETAIL POLICY
 - URBAN REGENERATION OF CITIES, TOWNS AND DOCKLAND AREAS
 - RURAL REVITALIZATION
 - COASTAL AREAS AND ISLANDS
 - BUILDING NETWORKS
-
- ENTERPRISE, SKILLS/TRAINING AND EDUCATIONAL SUPPORTS FOR TOURISM & RELATED SECTORS, NEW APPRENTICESHIPS FOR HOSPITALITY SECTOR

Cork - Metropolitan Area Spatial Plan (MASP)



Waterford Metropolitan Area Strategic Plan (MASP)




Metropolitan Area Spatial Plan (MASP)





FEIDHMIÚ / IMPLEMENTATION

Investment & Funding

- The Project Ireland 2040 Funds
 - Ireland Strategic Investment Fund
 - EU Funding Programmes
 - Enterprise Funding
- 



Céimeanna Seo Chugainn

Next Steps



Quarter 4 2018

Quarter 1 2019

Quarter 2 2019

Quarter 3 2019

Draft RSES published
Public Consultation - 10 Weeks
November 2018 – February 2019

SRA
Meeting
March, 2019

Consultation on
Material Amendments
4 Weeks
March – April 2019

May 2019
Target Date for Adoption of
Southern Region RSES



Go raibh maith agaibh

Questions/Comments