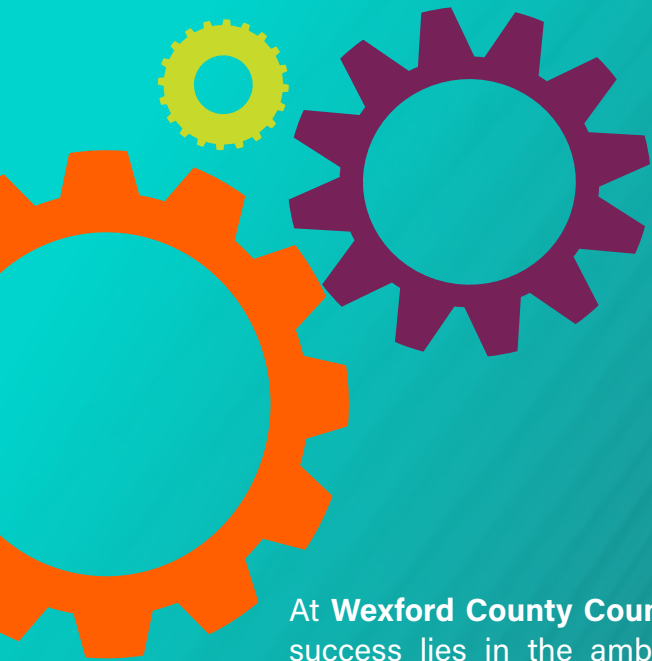




Comhairle Contae
Loch Garman
Wexford
County Council

Wexford County Council

Supporting Business,
Driving Growth



At **Wexford County Council**, we believe that the heart of our county's success lies in the ambition, innovation and resilience of our local business community. Whether you are an aspiring entrepreneur with a fresh idea, a growing SME looking to scale or a property owner ready to revitalise a local space, we are here to support your journey.

Our mission is to make County Wexford the premier location to live, work and invest. By combining financial incentives, expert mentorship, consultancy, and strategic urban planning, we are building a vibrant economic landscape that rewards vision and creates lasting opportunity.



Why Connect with Us?

We provide a comprehensive list of business supports, designed to meet you exactly where you are:

Revitalising our spaces:

Our Vacant Property Schemes offer substantial grants and rate incentives to help you breathe new life into empty commercial units, turning 'for sale' signs into 'open for business' signs.

Visionary town centres:

Guided by the Town Centre First Policy, we are investing in the infrastructure and public realms for our towns to ensure they remain vibrant, footfall heavy hubs for retail and services.

Expert Guidance:

Through the Local Enterprise Office Wexford, you can access training, one-to-one mentoring, consultancy and specialised financial supports to help your business reach its full potential.

Direct Financial Support:

From the Small Business Support Grant Scheme (offering 10% back on commercial rates) to energy-efficiency grants, we are committed to reducing your overheads while you grow.





Vacant Property Scheme



Vacant Property Refurbishment Grant

The Vacant Property Refurbishment Grant is a payment you can receive if you are turning a vacant house or building into your permanent home or a domestic rental property.

A grant of up to €50,000 is available:

- for the refurbishment of vacant properties for occupation as a principal private residence, and
- for properties which will be made available for rent, including the conversion of properties which have not been used as residential heretofore, subject to appropriate planning permission being in place.

This is subject to upper limits for the types of work, (*listed on Application Form*) having regard to a reasonable cost assessment by Wexford County Council. The grant is inclusive of the VAT cost of the works.

Where the refurbishment costs are expected to exceed the standard grant of up to €50,000, a maximum top-up grant amount of up to €20,000 is available where the property is confirmed by the applicant to be derelict (i.e. structurally unsound and dangerous) or if the property is already on the Local Authority's Derelict Sites Register, bringing the total grant available for a derelict property up to a maximum of €70,000.

Applications can be made for a property which will be made available for rent, in addition to one property which will be a principal private residence of the owner. A maximum of two grants will be available to an applicant. Only one grant will be available for a vacant property being made available for rent.

The objective of the grant scheme is to bring existing vacant homes and buildings back into use.

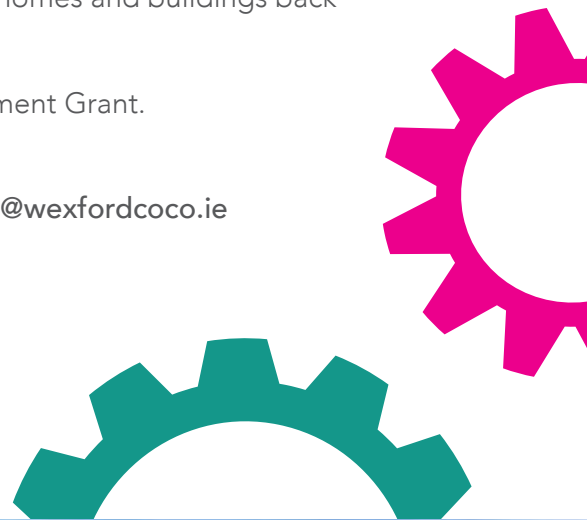
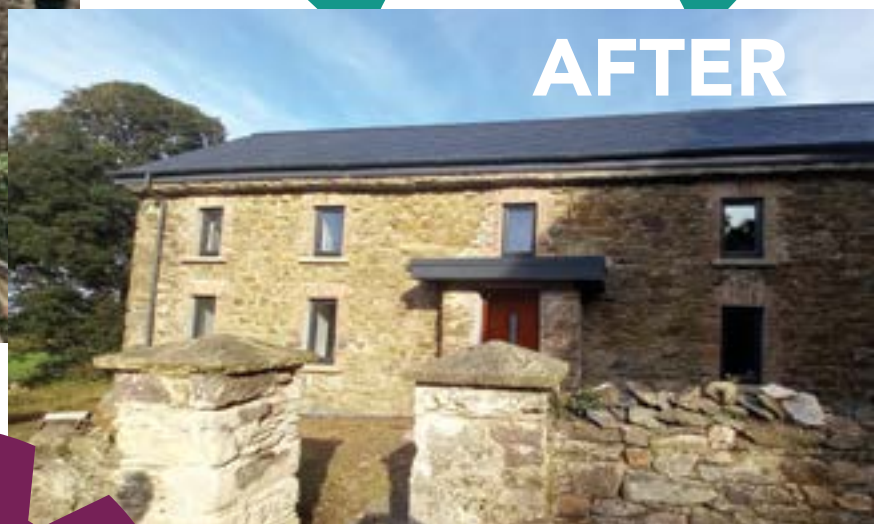
New builds are not eligible for the Vacant Property Refurbishment Grant.

Further details :

www.wexfordcoco.ie

053 9196400

vacanthomes@wexfordcoco.ie



Above Shop Vacancy Grant (New)

As part of the Vacant Property Scheme, a new enhanced support package of up to €140,000 is available to bring vacant 'above shop' space in cities, towns and villages into use as homes. A grant of up to €95,000 will be provided where one residential unit is being created, with an additional grant of up to €20,000 where two residential units are being created and a further €20,000 where three or more residential units are being created. Furthermore, up to €5,000 will be made available towards expert advice on conversion of these properties for residential use. This will bring the total grant package available towards the refurbishment of these properties up to €140,000.

Further details :

www.wexfordcoco.ie

053 9196400

vacanthomes@wexfordcoco.ie

Small Business Support Grant Scheme

This is a financial support to occupiers of commercial properties with total annual Commercial Rates bills of up to and including €30,000 in 2026, subject to terms and conditions.

The support grant, for small to medium sized businesses, is 10% of the annual commercial rates bill up to a maximum of €800.

Applicable to total commercial rates invoice(s) to a maximum of €30,000 in 2026.

Commercial Rates must be paid in full by 30th June 2026 if using any payment method other than Standing Order/Direct Debit.

Applicants paying by Standing Order/Direct Debit are eligible for the grant where their commercial rate account is paid in full by 15th December 2026 and where the first payment is made before the 1st of June 2026.

The Grant Scheme will also be applicable to ratepayers with arrears on their accounts where the following criteria are met:

1. Payment of a minimum amount which is equivalent to annual rates on their rates bill within the criteria set out above
2. Entering into a structured payment plan to address and eliminate the arrears

Only one grant will be applicable to any ratepayer.

Rates relief on vacant premises 2026

Where a commercial property is vacant, available for rent and the landlord has been unable to obtain a tenant despite reasonable efforts to do so, the following rates relief will be applied:

Rates Charge	Relief Amount	Payment Amount
Up to €2,000	60%	40%
Between €2,000 and €10,000	50%	50%
Over €10,000	30%	70%

Further details :

www.wexfordcoco.ie

053 9196059

rates@wexfordcoco.ie



Incentive Scheme for Vacant Commercial and Industrial Property

Wexford County Council provides a Vacant Property Grant Incentive Scheme to encourage the use of vacant commercial and industrial property across the County. The grant is being offered as a contribution towards fit out costs. By encouraging the occupation of vacant properties, the council is supporting the appearance and attraction of an area, thereby contributing indirectly to increased footfall for existing business. The main driver behind the scheme is sustainable job creation by developing new markets while supporting existing businesses.

To qualify for this scheme, the property must be vacant for 12 months on the day the application form is submitted.

Grant Relief to be provided

- Year 1** Grant relief is based on certified fit out costs/office improvement cost subject to a maximum of 75% of the annual rates liability.
- Year 2** Grant relief is based on original certified fit out costs / office improvement costs (as submitted at year 1) subject to a maximum of 50% of the annual rates liability.
- Year 3** Grant relief is based on original certified fit out costs / office improvement costs (as submitted at year 1) subject to a maximum of 25% of the annual rates liability.

Qualifying Costs for Grant Relief

Any reasonable costs associated with fit-out/office improvement will qualify for grant relief subject to receipt of valid invoices and verification/approval that costs were incurred.

Further details :

www.wexfordcoco.ie

053 9196555

economic@wexfordcoco.ie

Shopfront, Painting, Awning and Flower Grant Scheme – Enniscorthy MD

To enhance and improve the image of Enniscorthy Town and District.

The scheme will assist Business Owners / Operators to carry out works which will improve the exterior appearance of their business premises.

Applications may also be considered for painting of residential premises above shops in main towns/villages in the district.

This grant is subject to funding and is generally available from late Spring annually.

Further details:

www.wexfordcoco.ie

Enniscorthy Municipal District 053 9233540

emdreception@wexfordcoco.ie



Enniscorthy Digital Retail Village (Pilot scheme)

The Enniscorthy Digital Retail Village is a major step forward in supporting small businesses in keeping the town's retail sector strong and to ensure the town is not left behind in retail's digital transformation. By making it easier than ever to shop local, Wexford County Council is ensuring that Enniscorthy's independent retailers continue to be at the heart of the community.

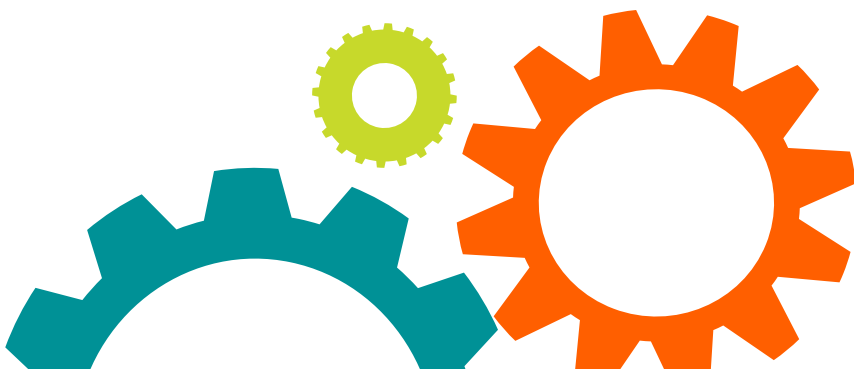
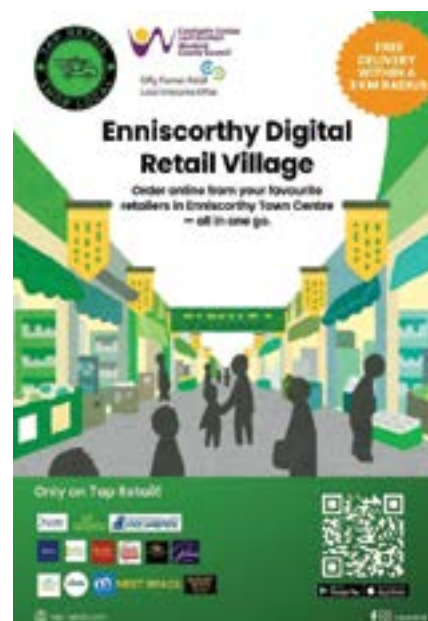
The Digital Retail Village gives independent local retailers the digital tools they need to compete with big online platforms while making it simple for customers to choose local first. It is about creating something that works for retailers, customers, and the community.

The innovative Irish retail platform (Tap Retail) initiative offers:

- An online shopping village that highlights Enniscorthy's local businesses
- User-friendly eCommerce tools to help small retailers grow and compete
- Training and digital support to businesses
- Collective marketing campaigns to strengthen the shop local message
- Click-and-collect and delivery options, making it easy to support local and offers free delivery within a 3km radius

The Enniscorthy Digital Retail Village scheme funded by Wexford County Council's Local Enterprise Office and Enniscorthy Municipal District, unites local businesses on a single digital platform and allows consumers to buy from multiple local shops in one single transaction. Every purchase made through the Digital Retail Village directly benefits Enniscorthy's small businesses, helping them to thrive and ensures that money spent locally continues to support local jobs and the future of Enniscorthy's small business community.

Further details:
www.tap-retail.com



Local Enterprise Office 
Making It Happen

Local Enterprise Office Wexford

Offering a range of supports to enable businesses
within County Wexford to grow and thrive.





Business Advice

The Local Enterprise Office Wexford (LEO Wexford) operates an 'Information Centre' whereby business clients are welcome to discuss their venture with a Business Adviser. This confidential advisory service is open to everyone exploring self-employment as an option or for those who are currently operating a business.

We can help you to identify the most appropriate supports/steps to take to advance your business proposition. The adviser will also be in a position to provide direction on soft supports such as training programmes, mentoring and management development programmes.

To book an appointment with a Business Advisor:

www.localenterprise.ie/wexford

053 9196020

leo.info@wexfordcoco.ie

Mentor Programme

The Local Enterprise Office Wexford through its mentor programme is also in a position to offer one-to-one meetings with a business expert in the following areas;

- Market Research
- Marketing
- Finance
- Sales
- Export
- Business Strategy

Further details:

www.localenterprise.ie/wexford

053 9196020

leo.info@wexfordcoco.ie

Training Programmes

To assist the small business community in meeting the challenges of the business world, LEO Wexford provides a wide range of high-quality training supports which are tailored to meet specific business requirements. Whether it is starting a business or growing a business there is something suitable for everyone.

Further details:

www.localenterprise.ie/wexford

053 9196020

leo.info@wexfordcoco.ie



Feasibility Grant

Feasibility Study Grants are designed to assist the promoter with researching market demand for a product or service and examining its sustainability. It includes assistance with innovation including specific consultancy requirements, hiring of expertise from third level colleges private specialists, design and prototype development.

The maximum Feasibility Study Grant payable shall be 50% of the investment or €15,000 whichever is the lesser.

Expenditure may be considered under the following headings:

- Market Research
- Consultancy Costs
- Technical Development/Prototype/Innovation
- Salary/Own Labour Research
- Miscellaneous Costs

Further details:

www.localenterprise.ie/wexford

053 9196020

leo.info@wexfordcoco.ie

Priming grant

A Priming Grant is a business start-up grant, available to micro enterprises within the first 18 months of start-up. Priming grants may be awarded to sole traders, partnerships or limited companies that fulfil the following criteria:

- Located and operating within County Wexford
- A business, which, on growth, will have the capacity to progress to the Enterprise Ireland portfolio
- A business employing up to 50 employees
- A manufacturing or internationally traded service business
- A domestically traded service business with the potential to trade internationally

The maximum Business Expansion Grant payable shall be 50% of the investment or €150,000, whichever is the lesser.

Expenditure may be considered under the following headings:

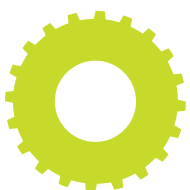
- Capital items
- Salary costs
- Consultancy/Innovation/Marketing costs

Further details:

www.localenterprise.ie/wexford

053 9196020

leo.info@wexfordcoco.ie





Business Expansion Grant

The Business Expansion Grant is designed to assist a business in its growth phase after the initial 18-month start-up period. Business Expansion grants may be awarded to sole traders, partnerships or limited companies that fulfil the following criteria:

- Located and operating within County Wexford
- A business, which, on growth, will have the capacity to progress to the Enterprise Ireland portfolio
- A business employing up to 50 employees
- A manufacturing or internationally traded service business
- A domestically traded service business with the potential to trade internationally

The maximum Business Expansion Grant payable shall be 50% of the investment or €150,000, whichever is the lesser.

Expenditure may be considered under the following headings:

- Capital items
- Salary costs
- Consultancy/Innovation/Marketing costs

Further details:

www.localenterprise.ie/wexford

053 9196020

leo.info@wexfordcoco.ie

Microfinance Ireland Loan

Microfinance Ireland (MFI) is a not-for-profit lender that can offer loans to small businesses to help them grow. It was set up to support businesses that might otherwise have difficulties getting funding from banks and other commercial lenders. Business loans from €2,000 to €50,000 are available at a reduced interest rate when an application is made via the Local Enterprise Office Wexford.

Further details:

www.microfinanceireland.ie

053 9196020

leo.info@wexfordcoco.ie



Research, Development and Innovation Supports

Research, Development, and Innovation (RD&I) and the application of knowledge are critical drivers for the future success of Irish industry. The Enterprise Ireland RD&I Fund is designed to provide support for research, development, and technological innovation relevant at all stages of company development, and which will enable companies to progress from undertaking an initial research project to high level Innovation and R&D activity. Eligible LEO client companies (sole traders are not eligible) can apply to the fund for support to develop new or improved products, services or processes under the following offers:

- RD&I Funding
- IP Start and IP Plus
- Innovation Partnership Programme
- Innovation Vouchers

Further details:

www.localenterprise.ie/wexford

053 9196020

leo.info@wexfordcoco.ie

Digital for Business

The Digital for Business support is an initiative from the Local Enterprise Office designed to give Local Enterprise Office clients a digital edge. Our expert digital consultants assist through:

- Analysis of existing digital systems in the business to identify potential gaps in meeting business needs
- Exploration of opportunities to optimise existing systems and to integrate with new solutions to enhance business operations
- Guidance on the implementation of new or enhanced digital solutions

It has helped businesses:

- Reduce stress in running their business
- Improve business results
- Eliminate paperwork and reduce time spent on administrative tasks
- Efficiently meet regulatory requirements
- Integrate Customer Relationship Management (CRM) systems
- Streamline processes for digital customer experiences
- Enhance insights into business performance
- Manage staff retention

Further details:

www.localenterprise.ie/wexford

053 9196020

leo.info@wexfordcoco.ie





Grow Digital

The Grow Digital Voucher offers small and medium businesses with up to 50 employees financial support to embrace digital technology. A digital for business project report must be completed within the previous two years.

Funding of up to €5,000 to invest in software and training/IT configuration to assist in boosting efficiency, streamlining operations and enhancing productivity with new digital tools, reaching new customers through connecting with a wider audience online and increasing competitiveness through bridging the digital gap and competing effectively in today's marketplace.

Further details:

www.localenterprise.ie/wexford

053 9196020

leo.info@wexfordcoco.ie

Innovation Voucher

LEO clients can access Innovation Vouchers which were developed by Enterprise Ireland to build links between Ireland's publicly funded knowledge providers (higher education institutes and public research bodies) and small and medium-sized businesses. Innovation Vouchers worth €5,000 are available to assist a company or companies to explore a business opportunity or problem with a registered knowledge provider.

Further details:

www.enterprise-ireland.com

053 9196020

leo.info@wexfordcoco.ie

Market Explorer

The Market Explorer Grant is open to small enterprises between 1 and 50 employees that meet the following criteria:

- Operating as manufacturing or eligible internationally traded services businesses and are solvent as demonstrated in the financial statements supplied and have current tax clearance from Revenue
- Are not currently clients of Enterprise Ireland or IDA
- Operating commercially and are established and trading for at least 12 months, registered, and carrying on activity within the area of Local Enterprise Office Wexford
- Have demonstrated intention to internationalise

Further details:

www.localenterprise.ie/wexford

053 9196020

leo.info@wexfordcoco.ie

GradStart Programme

GradStart offers Local Enterprise Office client companies financial support to hire top graduate talent and develop a talent pipeline. One Irish or International graduate can be hired at any one time for a two-year period by companies. During the placement, the company must define a project aligned to its growth plan for each graduate to complete. Graduates are also assigned an in-company mentor to support their development.

Key Points to note:

- Companies must be incorporated
- Companies must operate in the manufacturing or internationally traded services sector.
- Companies must employ a minimum of 5 staff
- Roles in any discipline are eligible for support, except for direct sales and direct marketing positions

Prior to applying you must do the following:

Contact Local Enterprise Office Wexford to discuss your application.

First time applicants will be required to register on the Enterprise Ireland Client Portal.

Further details:

www.localenterprise.ie/wexford

053 9196020

leo.info@wexfordcoco.ie

Lean for Business

Lean For Business is designed to encourage clients to adopt Lean business principles in their organisations to increase performance and competitiveness. Lean is for all companies, regardless of sector – it is not just for manufacturing companies.

Lean tools and techniques are helping companies across the globe to address competitiveness issues within their businesses by building the capability of their people to identify problems, improve operations and create a more innovative organisation. In a nutshell, Lean is about operating more efficiently and saving costs. Lean strives to remove waste and to support continual improvements in a company.

So, don't delay and join the 1,000's of companies all over Ireland who have successfully engaged in LEAN business programmes and recorded significant gains, including:

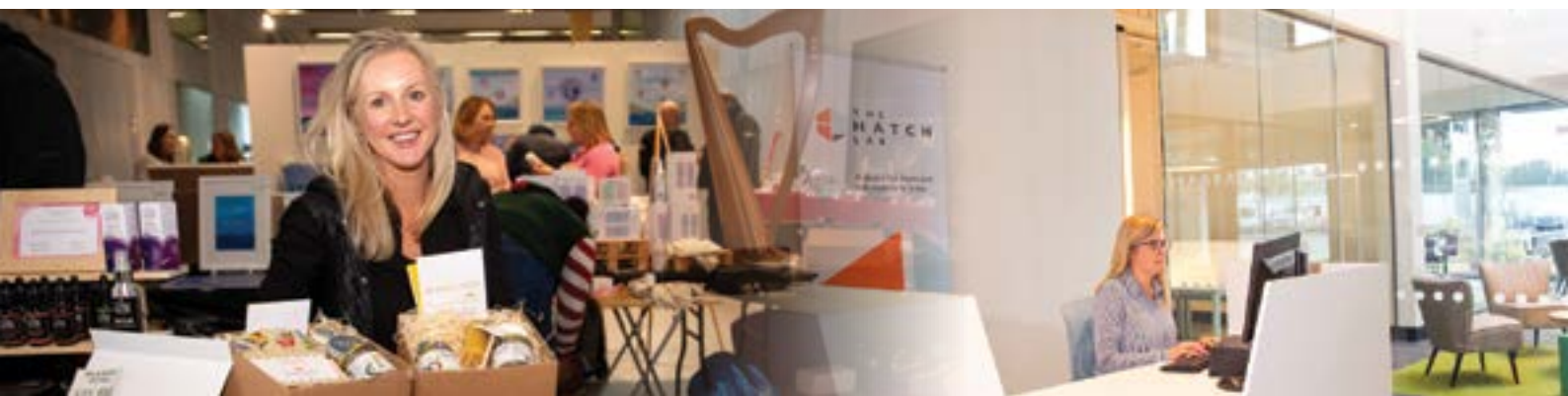
- Productivity increases 20%
- Sales increases 40%
- Delivery adherence improvements 43%
- Product & Service quality improvements 30%
- Employment increases 11%

Further details:

www.localenterprise.ie/wexford

053 9196020

leo.info@wexfordcoco.ie





Green for Business

The Green for Business support is a free consultancy programme designed to help small businesses become more sustainable. Through up to two days of expert consultancy, you'll work with a specialist Green Consultant who will identify practical, impactful changes tailored to your business.

Whether it's cutting costs, improving efficiency, or enhancing your reputation, going green can give your business a competitive edge — while also benefiting the environment.

Further details:

www.localenterprise.ie/wexford

053 9196020

leo.info@wexfordcoco.ie

Energy Efficiency grant

The Energy Efficiency Grant helps small businesses to invest in technologies and equipment following a Green for Business Report, Green Start Report or an SEAI energy audit. The aim of the scheme is to reduce the impact of enterprises on the environment, thereby increasing the agility and resilience of these businesses. Grant of 50% up to a max of €10,000 is available to eligible businesses.

Further details:

www.localenterprise.ie/wexford

053 9196020

leo.info@wexfordcoco.ie

Climate action services/supports for businesses (with SEAI)

Grants provided by SEAI

- Business Energy Upgrade
- Community Energy Grant
- Support Scheme for Renewable Heating
- The Non-Domestic Microgen Grant (NDMG) provides financial assistance to help businesses and other sectors to install solar PV panels to generate electricity on site
- Micro Generation Support Scheme
- Support Scheme for Energy Audits

Further details:

www.seai.ie/grants

info@seai.ie





Business Resources in Co Wexford libraries

The library offers the following for businesses:

- Free membership – just call in to any branch with your photo ID and proof of address
 - Free Internet and WiFi access
 - Space for study and research
 - Workshops, presentations and networking opportunities
 - Printing, copying and scanning services
 - 3D printing and design software
 - Business and employment books, magazines, newspapers and reports
-

Business eResources

You have free access to the following resources through our Market Research page.

- Business.ie - access to a database of over 130,000 Irish companies, with 80,000+ executive contacts for B2B marketing. Search all by location, sector, employee size, type, product or executive contact
- Vision-net - company information (Ireland & UK) including annual returns, mortgages and charges, risk watch, directorships and commercial judgements.

Online Courses

- Online Learning with Universal Class
- Language Learning with Transparent Language Online

Other useful resources

- Templates of business plans
- Jobseeker-Specific Resources
- Templates for CVs and cover letters
- Practice aptitude tests
- Links to useful support agencies

See <https://www.librariesireland.ie/services/work-matters>

For further details:
www.wexfordcoco/libraries.ie





053 9196000
www.wexfordcoco.ie



Rialtas na hÉireann
Government of Ireland



Lár Bailte ar dTús
Town Centre First



Oifig Fiontair Áitiúil
Local Enterprise Office