

WEXFORD COUNTY COUNCIL

# ECONOMIC AND COMMUNITY INVESTMENT PROGRAMME



Comhairle Contae  
Loch Garman  
Wexford  
County Council

## DELIVERING FOR WEXFORD

JUNE 2022

## Message from the Cathaoirleach of Wexford County Council

The Elected Members of Wexford County Council are proud to be a driving force underpinning the future development of the county. The Economic and Community Investment Brochure provides an overview of the initiatives and projects that will help to make County Wexford an even better place to live, work and invest in during the next few years.

The Programme demonstrates the many ways that Wexford County Council, along with our funding partners, enriches the lives of the people in our county on a daily basis. This brochure details the infrastructural, amenity and community projects which will help to create jobs, provide better spaces to live and work in, and enhance our natural and built environment. A copy of the brochure is being distributed to every home across the county.



**Cllr. Barbara Anne Murphy**

Over the past two years, Covid 19 has significantly impacted our way of life. As we emerge from the pandemic, we do so in a forward-looking manner where we move on from restrictions towards a positive period of vigorous growth and development.

Together, we continue to adapt to new opportunities and challenges within our communities as we work towards further improving the economic and social outlook of our county.

## Message from the Chief Executive of Wexford County Council

Despite significant challenges, Wexford County Council continues to lead the delivery of a programme of ongoing economic and community support and investment for our people.

The people of Wexford have proven their resilience in times of great difficulty over the past two years by helping each other during the Covid 19 pandemic. Through the Community Response Forum, led by Wexford County Council, enormous work was done to help our most vulnerable people and to keep our county moving forward. The Community Response Forum has recently been mobilised once again to co-ordinate the provision of supports to displaced people from Ukraine arriving in Wexford.



**Tom Enright, Chief Executive**

Since 2019 we have seen the delivery of large infrastructural developments in Wexford, such as the road bypasses of Enniscorthy and New Ross, greatly helping access to and within County Wexford. Projects such as the New Ross to Waterford Greenway, the Enniscorthy Technology Park and Trinity Wharf in Wexford Town edge ever closer to fruition. Our public spaces and amenities have been enhanced with new and improved town parks in Enniscorthy, Gorey and New Ross, together with the new Min Ryan Park in Wexford Town and many new walks and trails across the county. We continue to progress much-needed investment to improve the water services infrastructure across our county in partnership with Irish Water. The Council is working closely with the new South East Technological University to deliver a new large-scale campus in Wexford Town. We are also supporting Rosslare Europort in its ambitious plans to grow and develop the port to serve new port business and the development of offshore wind energy projects.

I hope that this brochure will provide you with a better awareness and understanding of some of the initiatives currently underway across our county. All of these projects have been developed through the leadership and financial support of Wexford County Council and we believe they will significantly contribute to the quality of life for all people in our community.

# ECONOMIC AND COMMUNITY INVESTMENT PROGRAMME – BACKGROUND

When the Elected Members embarked on the Economic and Community Investment Programme in 2018, many opportunities and challenges were identified. A considerable number of these have been addressed while new challenges and opportunities have emerged.

## The Opportunities for County Wexford

- ✓ Improving road connectivity
- ✓ Council led investment in commercial property solutions and remote working hubs
- ✓ Availability of natural gas, high speed broadband and green energy
- ✓ Capacity for growth at Rosslare Europort including establishment of offshore energy hub
- ✓ Positioning Wexford to leverage Brexit opportunities
- ✓ Vibrant arts, culture and creative sector
- ✓ Growth in tourism, particularly heritage and outdoor activities
- ✓ Maximising benefits of South East Technical University (SETU)
- ✓ Potential for growth in our quality food sector
- ✓ Harnessing digitalisation, innovation and green opportunities in industry

## The Challenges for County Wexford

- 📉 Access to public and affordable private housing
- 📉 Rising cost of living
- 📉 Climate Change
- 📉 Global supply chain constraints
- 📉 Relatively high levels of social deprivation
- 📉 Losing young people and skilled workers to other locations
- 📉 Providing property solutions for specific industry needs
- 📉 Longer term impacts of Covid-19 and growing number of humanitarian crises

# ENNISCORTHY MUNICIPAL DISTRICT



Bunclody Market Square Project



Enniscorthy Courthouse & Municipal District Office Redevelopments



Upgrade of Enniscorthy Waste Water Treatment Plant



Carley's Bridge Housing Scheme

## PROGRESSING

Urban Regeneration Strategy for Enniscorthy town

Clonhaston Water Supply Upgrade

Enniscorthy Sports Hub Pavilion

New Astro Turf Facility, Ross Road

Walking Trail enhancement works

Vinegar Hill Tourism and Heritage Upgrade

Enniscorthy Flood Relief Scheme



Enniscorthy Sports Hub Pavilion

# DELIVERED & UNDERWAY



Slaney Street Historic Towns Project  
in association with local business



ENNISCORTHY  
TECHNOLOGY  
PARK  
Enniscorthy Technology Park



Ferns Ancient Connections project



Kiltealy Trail extension

## PLANNED

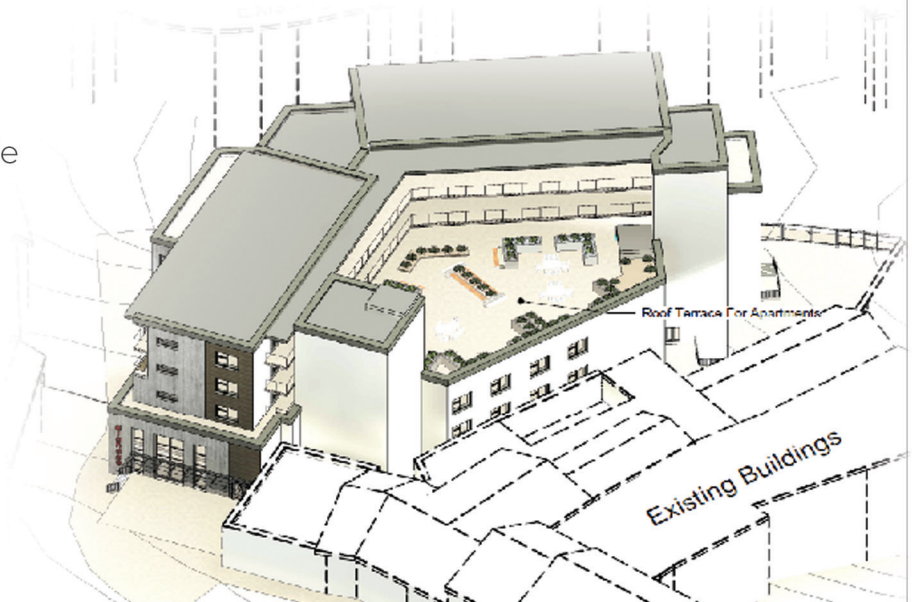
Urban Redevelopment of Murphy Flood's Site

Enniscorthy Town Centre and Castle  
Redevelopment Project

New Enniscorthy Library

Bunclody Public Park

Templeshannon Regeneration  
Project



Planned Redevelopment of Murphy Flood's

# GOREY - KILMUCKRIDGE MUNICIPAL DISTRICT



Gorey Town and District Park



Kilmuckridge to Morriscastle Footpath



Ballyminaun Water Treatment Plant Investment



Creagh Housing

## PROGRESSING

- Courtown Footpath Phase 3
- Ramsfort Park Affordable Housing Scheme
- St. Waleran's Access Road
- Esmonde Street Regeneration
- Gorey Market House
- Creagh Water Treatment Plant Interim Upgrade
- Public Lighting Gorey Town and District Park
- Wexford Street Social Housing



Esmonde Street



# DELIVERED & UNDERWAY



Courtown to Gorey Footpath phases 1 & 2



Courtown Public Realm



Cahore Walkway



Oilgate Village Improvement

## PLANNED

Courtown Coastal Protection Scheme

St. Waleran's Phase 1 Integrated Sustainable Housing

St. Waleran's Sports Campus and Recreational park

Completion of Gorey Inner Relief Road



St. Waleran's Development



# NEW ROSS MUNICIPAL DISTRICT



Goat Hill Town Wall



South East Greenway



New Fire Station, New Ross



Destination Towns

## PROGRESSING

New Ross Tourism Project – Murphy Building and Old Bank

John Street Enterprise Centre

New Ross Quay Public Realm (Oil Tank Site)

Shambles and Barrack Lane

Berthing Facilities, Barrow Princess River Cruise



Rosbercon Housing Development





# DELIVERED & UNDERWAY



High Hill Norman Park



Pearse Park Playground



Ballyhack to Duncannon Trail



Duncannon, Arthurstown and Ballyhack Waste Water Treatment Plant

# PLANNED



Duncannon Fort Project

New Ross to St. Mullins Greenway

Rosslare Harbour to Waterford Greenway

Hook Tourism Project

Fethard Waste Water Treatment Plant

Hook Tourism Project



# ROSSLARE MUNICIPAL DISTRICT



Rosetown Housing



Skeater Rock Amenity Space



Little Sea Amenity Area



Murrintown Park

## PROGRESSING

Kilmore Quay Wastewater Treatment Works

Wexford Town to Rosslare Greenway

Corach River Blueway (Bannow to Foulksmills)

Bridgetown Area Flood Relief Scheme

Rosslare Harbour Community Developments

Resurfacing of Bowling Green at Rosslare Strand Community Centre



Corach River Blueway



# DELIVERED & UNDERWAY



Bridgetown Park



Seaview Coastal Protection Works



Lady's Island Amenity & Trails Development



Kilmore Quay Link Road

## PLANNED

Bridgetown to Kilmore Quay Blueway/Walkway

Rosslare N25 Access Road

Kilmore Quay to Carnsore Point Erosion Risk Study

Improved amenities in the rural district of Rosslare MD

Rosslare Strand Coastal Protection Works

Completion of M11 Motorway to Rosslare Harbour



Local Amenity Development



# WEXFORD BOROUGH DISTRICT



Carrigfoyle Walking Trails



Min Ryan Park



Monck Street Public Plaza



Wexford Town Active Travel Improvements

## PROGRESSING

- Oyster Lane Improvements
- Mechanics Institute and Ballast Office Building Enhancement Works
- Newtown Road Active Travel Measures Phase 2
- Trinity Wharf Access Road
- Wexford Quay Pavilion
- Wexford Water Treatment Plant Upgrade
- Curracloe Water Sports Activity Centre
- Boxing Club and MUGA at Ferndale
- Adoration Convent Refurbishment
- Wexford Women's Refuge
- Min Ryan Skate Park



Wexford Women's Refuge

# DELIVERED & UNDERWAY



Wexford Arts Centre Extension



Housing Developments



Barntown Community Centre



Georgia Southern University

## PLANNED

Clonard Link Road Phase 1

Wexford Town to Rosslare Greenway

Viking Village at  
Irish National Heritage Park

Wexford Quay Pavilion

Wexford Flood Defence Scheme



Viking Village at Irish National Heritage Park

# STRATEGIC PROJECTS AND PARTNERSHIPS



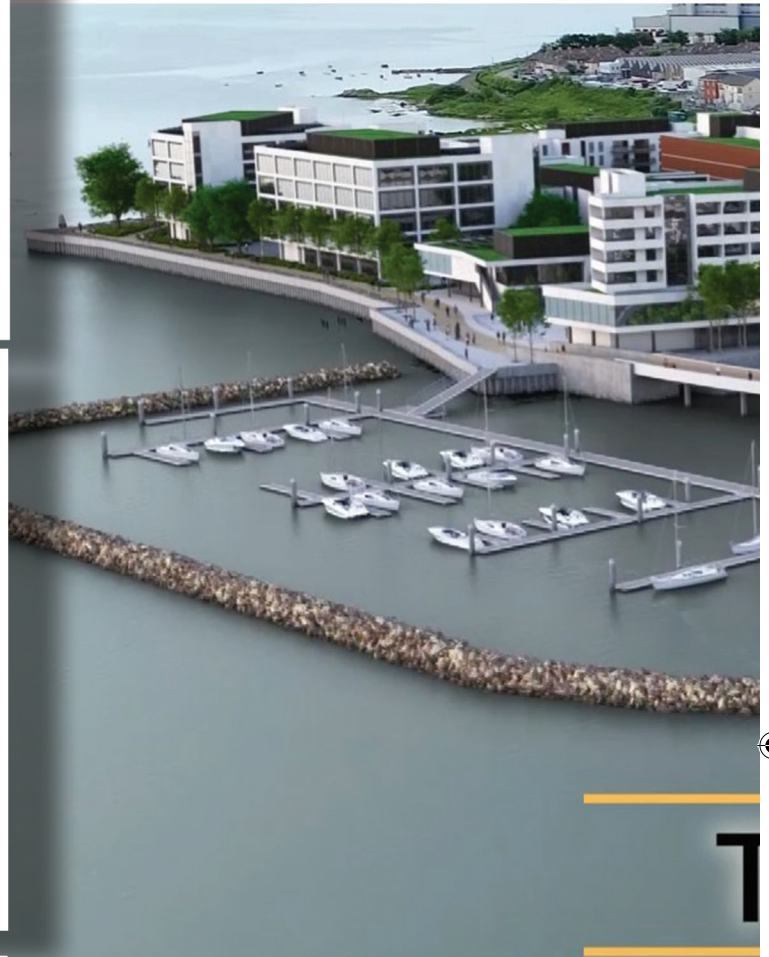
Southeast Greenway



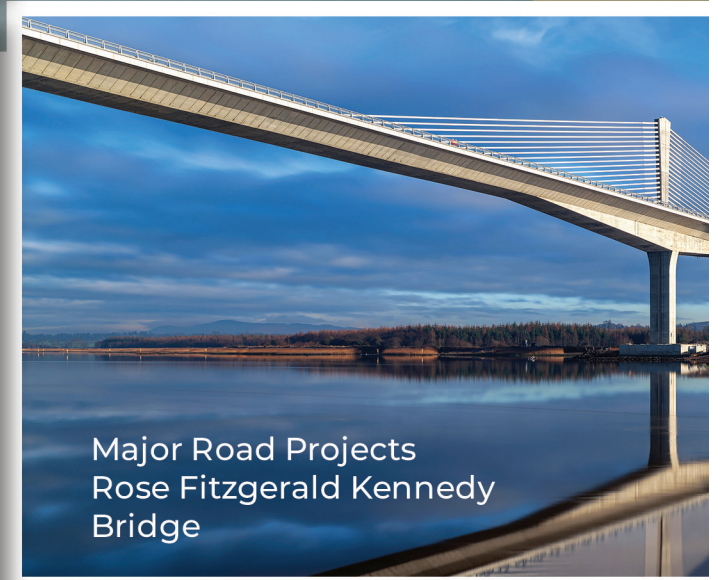
Social Housing Delivery Partnerships



Ollscoil Teicneolaíochta an Oirdheiscirt  
South East Technological University



“WORKING WITH PARTNERS TO DELIVER COUNTY WEXFORD”



Major Road Projects  
Rose Fitzgerald Kennedy Bridge

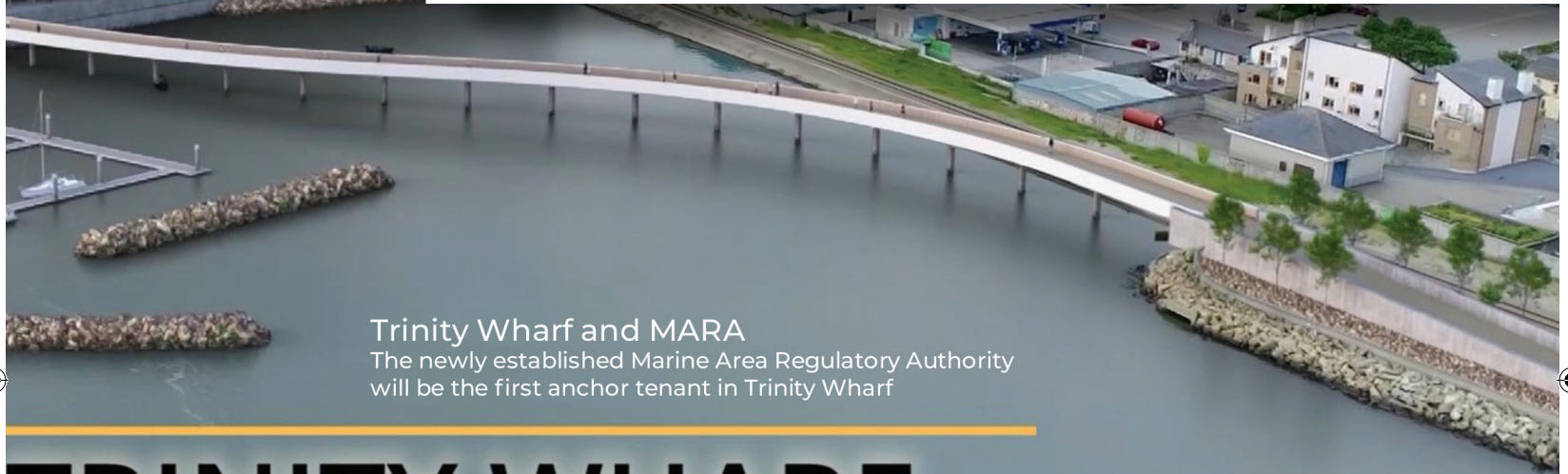
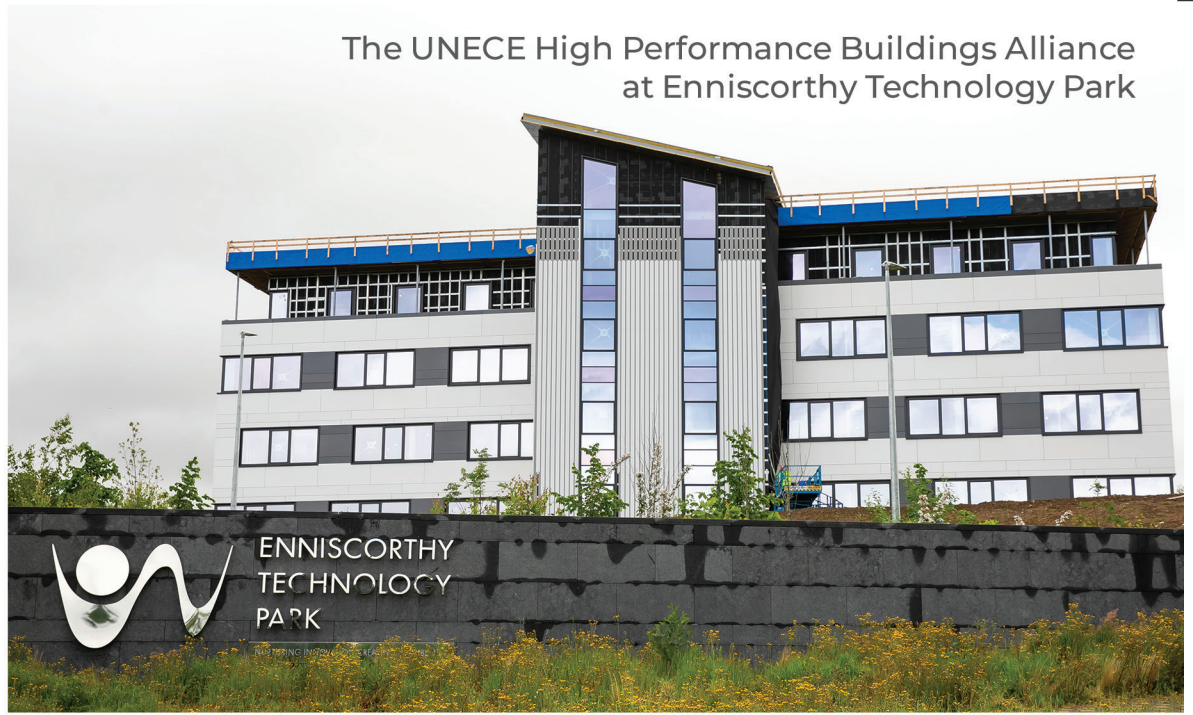


Kilkenny County Council  
Comhairle Chontae Chill Chainnigh

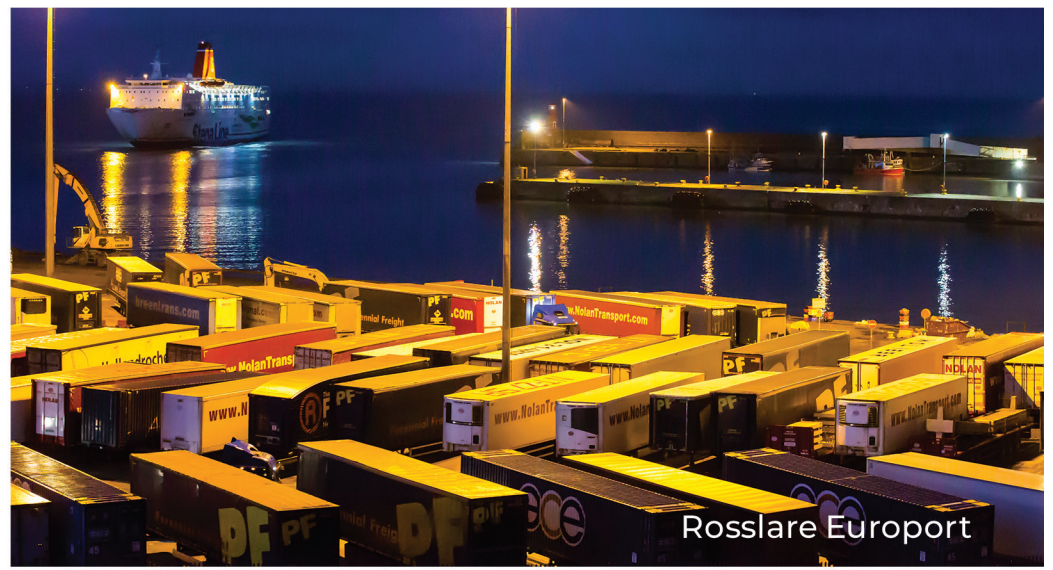




“OUR  
DELIVER FOR  
RD”



# TRINITY WHARF



# SUPPORTING COMMUNITIES

County Wexford Communities have benefitted from more than €17 million since 2019.

Between 2019 and 2021, Wexford County Council has facilitated more than €17 million worth of grant-aid to communities across the County, in association with Government Departments and agencies.

€11.8 Million

1,005 LCDC approved projects across County 2019-2021

€2.7 Million

131 Town & Village projects 2019-2021

€1 Million

17 Community-led Walking Trail projects funded 2019-2021

€700k +

in programmes via Creative Ireland 2018 to 2022 delivered by Wexford County Council's Culture & Creativity Team

4,500 hours

Music Generation Wexford music tuition delivered to children and young people in 83 locations led by WWETB



Wexford County Council also provides direct grant-aid and development and operational support to local groups working through the Municipal District offices and the Community Section. This includes annual amenity and resident group grants, operational support to local festivals, events and initiatives such as the 3-year funding grant which helped establish the new County Wexford Volunteer Centre and subsidised artist studio space via the Creative Hub project in Wexford town.



# COVID-19 RESPONSE

At the start of the pandemic Wexford County Council established the Community Response Forum in addition to a Covid-19 helpline.

The helpline matched requests for assistance to the nearest community volunteer. The staff team provided cover from 8am to 8pm for 300 consecutive days, answering 8946 calls. Throughout this period, and in cooperation with the HSE, Council staff made over 7000 telephone calls to people who were feeling isolated or were having difficulties due to Covid-19.

The Wexford County Council Covid-19 Response Forum met 27 times. Forum members shared information and ideas and together provided meals, collected groceries and prescriptions, arranged transport for medical appointments, delivered library books, gave out information and so many other supports that made a real difference to people's lives.

## Forum Members

- Alone
- An Garda Síochána
- An Post
- Church of Ireland
- Citizens Information
- Department of Social Protection
- Diocese of Ferns
- Family Carers Ireland
- GAA
- Healthy Ireland
- Health Services Executive
- IFA
- Irish Coastguard
- Local Enterprise Office
- Local Link Wexford
- Meals on Wheels
- Muintir na Tíre
- National Ambulance Service
- Order of Malta
- Public Participation Network
- St. Vincent De Paul
- Tusla
- Wexford Civil Defence
- Wexford Co. Council Fire Service
- Wexford Co. Council Library Service
- Wexford LCDC
- Wexford Local Development
- Wexford Marine Watch
- Wexford Red Cross

## Supporting Business throughout Covid-19

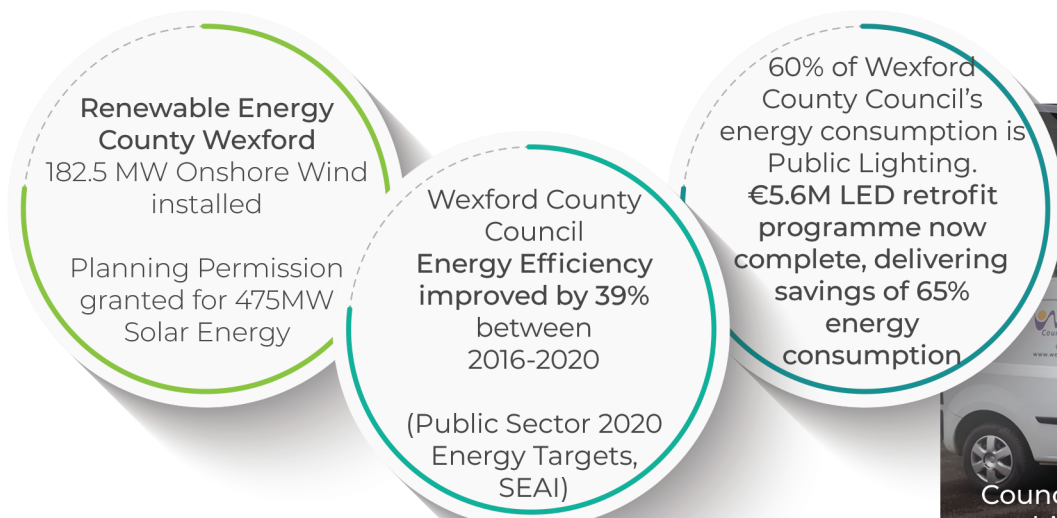


## Ukraine Crisis Response

Wexford County Council is playing its part in the national humanitarian response to support people arriving in Ireland who are fleeing the conflict in Ukraine.

This includes helping to provide accommodation for displaced Ukrainians arriving at Rosslare Port, assisting with the Red Cross pledging process and working with partners in local communities to meet the needs of Ukrainians who are now living and working in the county. A Community Response Forum, similar to that put in place for Covid 19 is working together to make our County a safe, welcoming place for everyone.

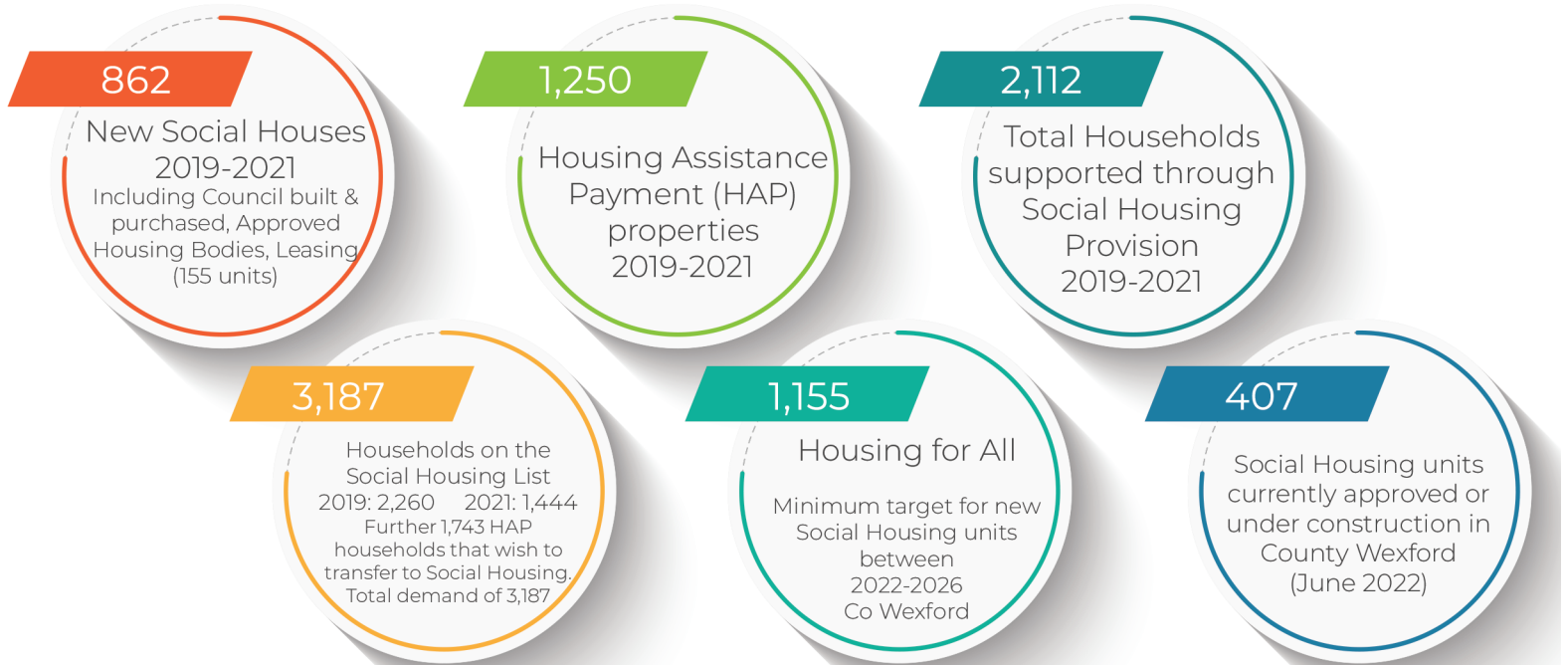
## Creating a more sustainable County



Council Fleet Electrification: 10 electric vehicles to date, with 12% of our 250 fleet suitable

# Wexford County Council's SOCIAL HOUSING PROGRAMME

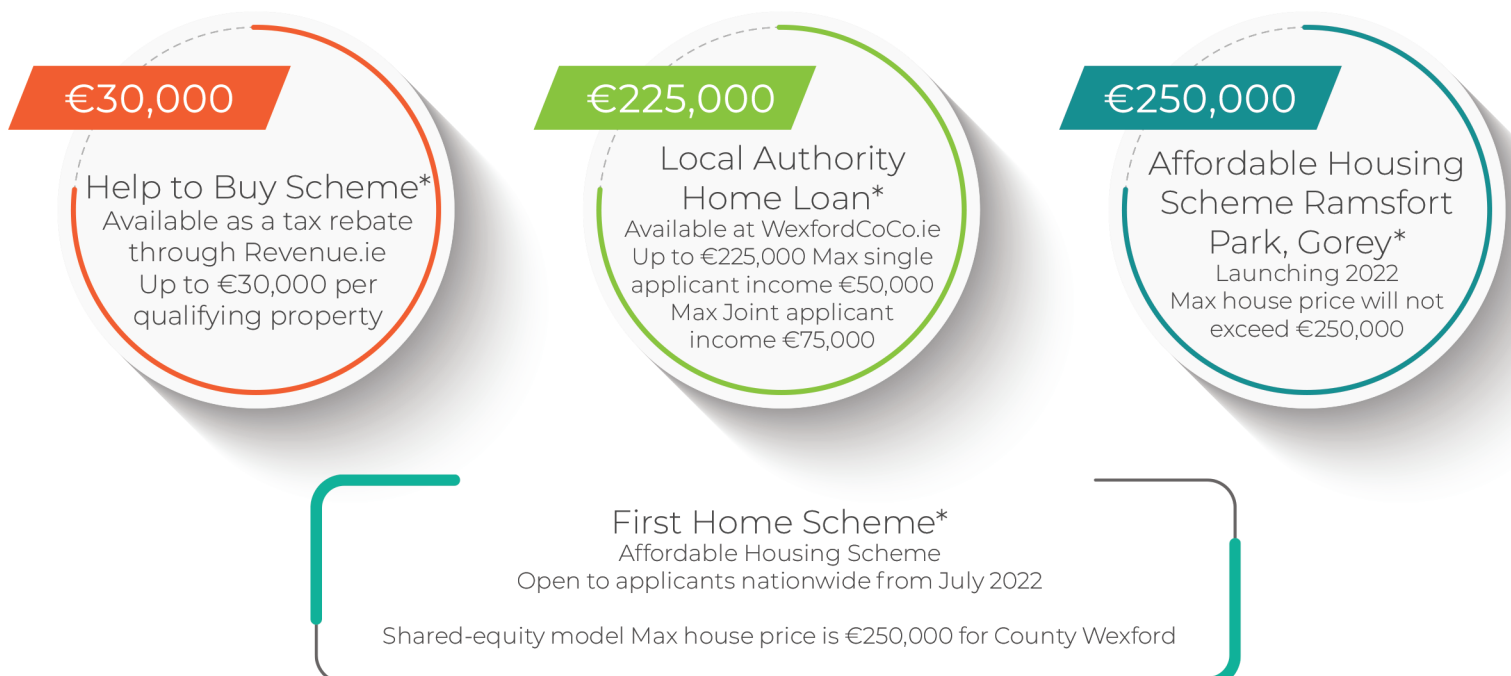
Between 2018 and 2021, Wexford County Council delivered 1,142 new social housing units under the Rebuilding Ireland Programme. The infographs below provide a snapshot of activity.



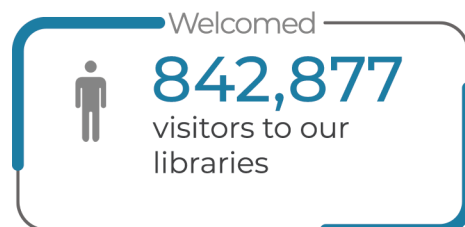
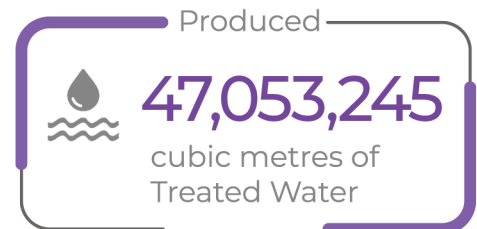
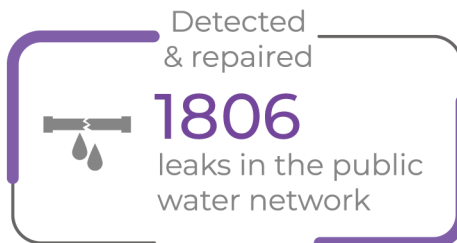
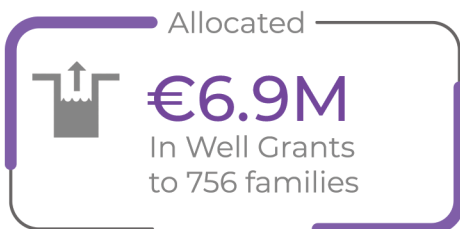
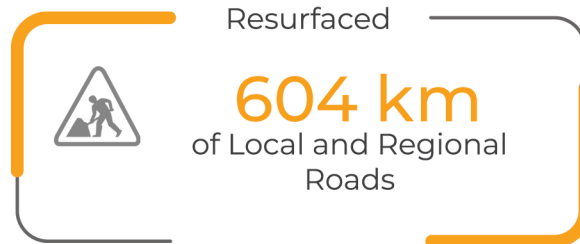
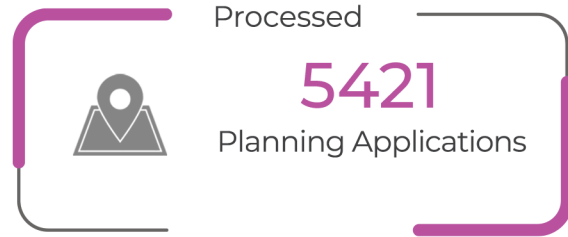
Wexford Council is committed to providing immediate and focused social housing solutions for the people of County Wexford. Housing For All is the new housing plan launched by Government aimed at increasing the supply of housing delivery up to 2026. Wexford County Council's target is 1,155 new social houses. This is the minimum number of units expected to be delivered during the period 2022 – 2026.

## Affordable Housing

A key priority of Housing for All is the delivery of affordable housing options for people who are outside the social housing threshold and are also struggling to purchase or rent their own home. There are already financial supports in place which are aimed at helping people to purchase their own home.



# WEXFORD COUNTY COUNCIL KEY SERVICES – 2019-2021



## Enniscorthy Municipal District



**Browne, Aidan**  
Party: Fianna Fáil  
Phone: 087 7753097  
aidan.browne@wexfordmcc.ie



**Byrne, Cathal**  
Party: Fine Gael  
Phone: 085 1461164  
cathal.byrne@wexfordmcc.ie



**Codd-Nolan, Kathleen**  
Party: Fine Gael  
Phone: 086 3452736  
kathleen.coddnolan@wexfordmcc.ie



**Murphy, Barbara Anne**  
Party: Fianna Fáil  
Phone: 087 6736966 / 053 9377158  
bamurphy@wexfordmcc.ie



**O'Rourke, John**  
Party: Non Party  
Phone: 086 8420609  
john.o'rourke@wexfordmcc.ie



**Owens, Jackser**  
Party: Non Party  
Phone: 087 6989033  
jackser.owens@wexfordmcc.ie

## Gorey Kilmuckridge Municipal District



**Bolger, Andrew**  
Party: Fianna Fáil  
Phone: 087 1713176  
andrew.bolger@wexfordmcc.ie



**Breen, Pip**  
Party: Fianna Fáil  
Phone: 086 8139817  
pip.breen@wexfordmcc.ie



**Devereux, Diarmuid**  
Party: Fine Gael  
Phone: 086 8394811  
diarmuid.devereux@wexfordmcc.ie



**Donohoe, Anthony**  
Party: Fine Gael  
Phone: 087 7736083  
anthony.donohoe@wexfordmcc.ie



**Farrell, Mary**  
Party: Non Party  
Phone: 087 2740679  
mary.farrell@wexfordmcc.ie



**Kavanagh, Willie**  
Party: Fianna Fáil  
Phone: 087 0546803  
willie.kavanagh@wexfordmcc.ie



**Kenny, Donal**  
Party: Fianna Fáil  
Phone: 087 2453187  
donal.kenny@wexfordmcc.ie



**Ó Súilleabháin, Fionntán**  
Party: Sinn Fein  
Phone: 087 6013877  
fionntan.osuilleabhain@wexfordmcc.ie



**Sullivan, Joe**  
Party: Fianna Fáil  
Phone: 087 2416375 / 0402 37722  
joe.sullivan@wexfordmcc.ie



**Walsh, Oliver**  
Party: Fine Gael  
Phone: 087 6322667  
oliver.walsh@wexfordmcc.ie

## New Ross Municipal District



**Barden, Pat**  
Party: Non Party  
Phone: 086 2658175  
patrick.barden@wexfordmcc.ie



**Connick, Anthony**  
Party: Non Party  
Phone: 087 2338350  
anthony.connick@wexfordmcc.ie



**Fleming, John**  
Party: Fianna Fáil  
Phone: 087 2036069  
john.fleming@wexfordmcc.ie



**Sheehan, Michael**  
Party: Fianna Fáil  
Phone: 085 1349020  
michael.sheehan@wexfordmcc.ie



**Murphy, Brídín**  
Party: Fine Gael  
Phone: 087 7881963  
bridin.murphy@wexfordmcc.ie



**Whelan, Michael**  
Party: Fianna Fáil  
Phone: 087 2388156  
michael.whelan@wexfordmcc.ie

## Rosslare Municipal District



**Carthy, Ger**  
Party: Non Party  
Phone: 087 6255934  
ger.carthy@wexfordmcc.ie



**Codd, Jim**  
Party: Aontu  
Phone: 087 6107083  
jim.codd@wexfordmcc.ie



**McDonald, Lisa**  
Party: Fianna Fáil  
Phone: 087 9184034  
lisa.mcdonald@wexfordmcc.ie



**Moore, Jim**  
Party: Fine Gael  
Phone: 087 2858278  
jim.moore@wexfordmcc.ie



**Staples, Frank**  
Party: Fine Gael  
Phone: 086 2305050  
frank.staples@wexfordmcc.ie

## Wexford Borough District



**Bell, Maura**  
Party: Labour Party  
Phone: 087 2616505  
maura.bell@wexfordmcc.ie



**Forde, Tom**  
Party: Sinn Fein  
Phone: 085 8421627  
tom.forde@wexfordmcc.ie



**Hegarty, John**  
Party: Fine Gael  
Phone: 087 2971304  
john.hegarty@wexfordmcc.ie



**Hynes, David**  
Party: Non Party  
Phone: 087 2290248  
david.hynes@wexfordmcc.ie



**Kelly, Leonard**  
Party: Non Party  
Phone: 087 2419069  
leonard.kelly@wexfordmcc.ie



**Laffan, Garry**  
Party: Fianna Fáil  
Phone: 087 7878417  
garry.laffan@wexfordmcc.ie



**Lawlor, George**  
Party: Labour  
Phone: 086 8164128  
george.lawlor@wexfordmcc.ie