



# Strategic Environmental Assessment Screening Report


For  
Climate Change Adaptation Strategy for Wexford  
County Council


Determination of the need for a Strategic Environmental  
Assessment for Wexford County Council Climate Change  
Adaptation Strategy prepared under the National Climate  
Change Adaptation Framework

September 2019

ON BEHALF OF  
Climate Action Regional Office (CARO)

Prepared by  
Enviroguide Consulting

 Dublin  
3D Core C, Block 71, The Plaza,  
Park West, Dublin 12

 Kerry  
19 Henry Street  
Kenmare, Co. Kerry

 [www.enviroguide.ie](http://www.enviroguide.ie)  
 [info@enviroguide.ie](mailto:info@enviroguide.ie)  
 +353 1 565 4730



**enviroguide**  
consulting

## DOCUMENT CONTROL SHEET

Revision	Status	Author(s)	Reviewed	Approved	Issue Date
1.0	Draft	Mairead Foran Environmental Consultant	Jim Dowdall Director	Jim Dowdall Director	18/04/2019
2.0	Draft for Consultation	Mairead Foran Environmental Consultant	Muriel Ennis Principal Environmental Consultant	Muriel Ennis Principal Environmental Consultant	07/05/2019
3.0	Final	Mairead Foran Environmental Consultant	Muriel Ennis Principal Environmental Consultant	Muriel Ennis Principal Environmental Consultant	27/08/2019

## TABLE OF CONTENTS

1	INTRODUCTION .....	1
1.1	BACKGROUND.....	1
2	LEGISLATIVE CONTEXT .....	1
2.1	STRATEGIC ENVIRONMENTAL ASSESSMENT .....	1
2.2	CLIMATE CHANGE ADAPTATION .....	2
2.2.1	International Context .....	2
2.2.2	EU Context .....	2
2.2.3	National Context .....	2
2.3	WEXFORD’S CLIMATE CHANGE ADAPTATION OBJECTIVES .....	3
2.4	CONSULTATION.....	4
2.4.1	Environmental Authorities.....	4
2.4.2	Public Consultation.....	4
2.4.3	Summary of Consultation submissions .....	5
2.5	APPROPRIATE ASSESSMENT .....	11
3	DETERMINING WHETHER AN SEA IS REQUIRED .....	12
3.1	REQUIREMENT TO CARRY OUT SEA – PRE-SCREENING CHECKLIST .....	12
4	SEA SCREENING DETERMINATION.....	14
5	CONCLUSION.....	16
	APPENDIX 1 CLIMATE CHANGE ADAPTATION STRATEGY – ACTIONS PER THEME .....	17

## LIST OF TABLES

Table 1	Wexford’s Climate Change Adaptation Strategy Objectives.....	3
Table 2	Summary of Consultation Submissions and Responses .....	5
Table 3	Screening determination for Annex II (1.), Criteria for determining the likely significance of effects .....	14
Table 4	Screening determination for Annex II (2.), Criteria for determining the likely significance of effects .....	16

## LIST OF FIGURES

Figure 1	Pre-Screening Decision Process .....	13
----------	--------------------------------------	----

## 1 INTRODUCTION

### 1.1 Background

The Earth's Climate is changing. While natural fluctuations in climate are considered normal, emerging research and observational records from across the world show rates of change that are far greater than those experienced in recent history. Global temperatures have risen and are projected to rise further bringing changes in weather patterns, rising sea levels and increased frequency and intensity of extreme weather. Ireland's climate is changing in line with global patterns and these changes are bringing significant and wide ranging economic, environmental and social impacts.

Climate change is now recognised as a global challenge with policy responses required in terms of both mitigating the causes of climate change and in adapting to the now inevitable consequences of our changing climate. Action at local level is vitally important to help reduce the risks and impacts of climate change across communities.

This local authority Climate Change Adaptation Strategy forms part of Ireland's national strategy for climate adaptation as set out in the National Adaptation Framework (NAF) which was produced under the provisions of the Climate Action and Low Carbon Development Act 2015.<sup>1</sup>

It is tasked with mainstreaming climate change adaptation over time into all functions, operations and services of the local authority. It seeks to inform or 'climate proof' existing plans and policies produced and implemented by the local authority. This ensures a considered, consistent and coherent approach, facing head-on the challenges of a changing climate. Crucially, it also helps in building resilience within the local authority organisation itself as well as across all communities.

## 2 LEGISLATIVE CONTEXT

### 2.1 Strategic Environmental Assessment

A Strategic Environmental Assessment (SEA) is the formal, systematic evaluation of the likely significant environmental effects of implementing a plan or program, or variation to a plan or program, before a decision is made to adopt it. The SEA Directive<sup>2</sup> requires, inter alia, that SEA is undertaken for certain plans, programs or variations to these.

The SEA Directive has been transposed into Irish law through the European Communities (Environmental Assessment of Certain Plans and Programmes) Regulations 2004 (S.I. 435 of 2004) and The Planning and Development Strategic Environmental Assessment (SEA) Regulations 2004 (S.I. 436 of 2004). These Regulations have since been amended by the European Communities (Environmental Assessment of Certain Plans and Programmes) (Amendment) Regulations 2011 (SI No. 200 of 2011) and the Planning and Development (SEA) (Amendment) Regulations 2011 (SI No. 201 of 2011). The criteria as set out in Annex II of The SEA Directive (Directive 2001/42/EC) on the assessment of the effects of certain plans and programmes on the environment and as also set out in Schedule 2A of the Planning and Development (SEA) Regulations 2004 (S.I. No. 436 of 2004) need to be considered while drafting of the Climate Change Adaptation Strategies.

---

<sup>1</sup> Climate Action and Low Carbon Development Act 2015 (S.I. No. 25/2016). Available at <http://www.irishstatutebook.ie/eli/2015/act/46/enacted/en/htm>

<sup>2</sup> Directive 2001/42/EC of the European Parliament and of the Council of Ministers, of 27th June 2001, on the Assessment of the Effects of Certain Plans and Programmes on the Environment

This SEA screening report is consistent with the process as recommended by The Department of Environment, Heritage and Local Government guidance document entitled Implementation of SEA Directive 2001/42/EC Assessment of the Effects of Certain Plans and Programmes on the Environment November 2004, specifically Chapter 3 (SEA: Screening and Scoping) and furthermore uses the criteria for SEA screening criteria set out in the SEA Directive.

An Appropriate Assessment Screening Report has also been prepared for this Climate Change Adaptation Strategy in line with Article 6(3) of the EU Habitats Directive (92/43/EEC).

## 2.2 Climate Change Adaptation

### 2.2.1 International Context

The United Nations Framework Convention on Climate Change (UNFCCC) is an international environmental treaty adopted in May 1992. The framework's objective is "to stabilize greenhouse gas concentrations in the atmosphere at a level that would prevent dangerous anthropogenic interference with the climate system". The framework did not set binding limits on greenhouse gas emissions and contained no enforcement mechanisms. However, the framework outlined how specific international treaties may negotiate further action towards its key objective. The Paris Agreement 2015 is a protocol set within the context of the UNFCCC (ratified by Ireland on 4<sup>th</sup> November 2016) and it is aimed at:

- Limiting global warming to less than 2<sup>o</sup>C above pre-industrial level and pursuing efforts to limit the temperature increase to 1.5<sup>o</sup>C.
- Building resilience and increasing the ability to mitigate the impacts of climate change.

The agreement states the need for Parties to formulate and implement National Adaptation Plans.

### 2.2.2 EU Context

The 2013 EU Strategy on Adaptation to Climate Change encouraged all Member states to adopt comprehensive adaptation strategies. It sought better informed decision making through the identification and addressing of gaps in knowledge about adaptation. The European Climate Adaptation Platform Climate-ADAPT, was developed as a resource mechanism to help users access and share information on adaptation.

The Global Covenant of Mayors for Climate and Energy is a voluntary, bottom up, approach for cities and local governments to combat Climate Change and move towards a low emission, resilient society. The Global Covenant of Mayors for Climate and Energy brought the Compact of Mayors and the EU Covenant of Mayors under one international body in January 2017 incorporating over 9,000 cities and local governments.

### 2.2.3 National Context

The 2012 National Climate Change Adaptation Framework (NCCAF) was Ireland's first step in developing a national policy on adaptation actions to combat the impacts of climate change.

The National Policy Position on Climate Action and Low Carbon Development 2014 restated the policy position of the NCCAF, 2012. Greenhouse gas mitigation and adaptation to the impacts of climate change were to be addressed in parallel national plans under an evolving climate policy to 2050.

The Climate Action and Low Carbon Development Act 2015 was a landmark national milestone in the evolution of climate change policy in Ireland. It provides the statutory basis for the national transition objective laid out in the National Policy Position (as per above). Further to this, it made provision for and gives statutory authority to both the National Mitigation Plan (NMP), published in 2017 and the

National Adaptation Framework (NAF) published in 2018. This Local Adaptation Strategy forms part of the National Adaptation Framework.

The Local Authority Adaptation Strategy Development Guidelines 2018 provides guidance to Local Authorities to develop their own Climate Action Adaptation Strategy. In developing this adaptation strategy Wexford County Council has been consistent with these guidelines.

### 2.3 Wexford's Climate Change Adaptation Objectives

The purpose of the Wexford County Council's Climate Change Adaptation Strategy is to achieve the national objective of becoming a more climate resilient society and economy by 2050. In order to help tackle current and future challenges that climate change can present, Wexford County Council have set out a number of key objectives in their strategy, under six thematic principles. Table 1 below outlines Wexford County Councils Climate Change Adaptation Strategy objectives per theme.

Under each theme in the Climate Change Adaptation Strategy there are a number of actions that have been detailed to achieve each Objective. All the actions per theme can be found in Appendix 1.

TABLE 1 WEXFORD'S CLIMATE CHANGE ADAPTATION STRATEGY OBJECTIVES

<b>Theme 1: Local Adaptation Governance and Business Operations</b>	
1	To ensure the progression and implementation of local climate change adaptation actions in Wexford County Council.
2	To ensure that climate change adaptation actions are mainstreamed into all activities of Wexford County Council.
3	To Build capacity and resilience in Wexford County Council to support service delivery.
4	To Identify and support opportunities that may arise from pursuing adaption efforts through the functions of Wexford County Council.
<b>Theme 2: Infrastructure and Built Environment</b>	
1	To ensure and increase the resilience of infrastructural assets and inform investment decisions.
2	To work towards the objective for a low carbon society.
<b>Theme 3: Landuse and Development</b>	
1	To Integrate climate action considerations into land use planning policy and influence positive behaviour.
<b>Theme 4: Drainage and Flood Management</b>	
1	To promote flood risk mitigation through a variety of responses.
2	To provide for adequate and quality water supply in times of extreme drought.
<b>Theme 5: Natural Resources and Cultural Infrastructure</b>	
1	To provide for protection and enhancement of natural environment to work positively towards climate action.
2	To promote effective bio-diversity management and enhance protection of natural habitats and landscapes.
3	To protect Heritage and Cultural Infrastructure.
<b>Theme 6: Community Health and Wellbeing</b>	
1	To build capacity and resilience within communities.

## 2.4 Consultation

### 2.4.1 Environmental Authorities

Article 5 (4) of the SEA Directive specifies that each Member State should designate the relevant Environmental Authorities which, by reason of their specific environmental responsibility, are likely to be concerned with the potential environmental effect of any plan or programme. Article 9(5) and 9(6) of the European Communities (Environmental Assessment of Certain Plans and Programmes) Regulations 2004 (as amended) details the need for the competent authority (Wexford County Council) to consult the relevant environmental authorities regarding the development of certain plans and programmes. On an Irish context, as a minimum the following environmental authorities should be contacted when developing county plans and programmes:

- Environmental Protection Agency (EPA);
- The Minister for the Environment (Minister Communications, Climate Action and Environment) – where the planning authority considers that a plan might have significant effects in relation to the architectural or archaeological heritage or to nature conservation; and
- The Minister for Communications, Marine and Natural Resources (Minister for Agriculture, Food and the Marine) - where the planning authority considers that a plan might have significant effects on fisheries or the marine environment.

Wexford County Council on the 30<sup>th</sup> May 2019 sent the Draft Climate Change Adaptation Strategy and the SEA Screening Report to the following Environmental Authorities:

- Environmental Protection Agency (EPA);
- The Department of Agriculture, Food and the Marine;
- The Department of Communications, Climate Action and Environment; and
- The Department of Culture, Heritage and the Gaeltacht.

### 2.4.2 Public Consultation

Post Environmental Authority consultation, Wexford County Council conducted a four-week period from 9<sup>th</sup> July 2019 to 9<sup>th</sup> August 2019, where the Draft Climate Change Adaptation Strategy, with the accompanying SEA Screening Report and Appropriate Assessment (AA) Screening report were presented for public consultation. The follow outreach methods were used:

- Advertisement in the follow local newspaper from the 9<sup>th</sup> July 2019:
  - The Wexford People;
  - The New Ross Standard;
  - The Gorey Guardian; and
  - The Enniscorthy Echo.
- Displayed in the following county libraries:
  - Wexford Town Library, Mallin St., Wexford;
  - Gorey Library, Gorey Civic Square, The Avenue, Gorey;
  - Enniscorthy Library, Lymington Rd., Enniscorthy;
  - Bunclody Library, Millwood, Carrigduff, Bunclody; and
  - New Ross Library, Barrack Lane, New Ross.
- Displayed for public viewing at Wexford County Council headquarters at County Hall, Carricklawn, Co. Wexford;
- Circulated to all elected members; and
- Made available for viewing on Wexford County Council’s website at [www.wexford-coco.ie](http://www.wexford-coco.ie) and the Government Public Consultations Portal at <https://gov.ie/consultations>.

A number of submissions came in during the consultation period, and 21 submissions from 19 individuals / organisation were received in total. The following organisation and individuals made submissions:

- █
- █
- █
- Wexford Public Participation Network (PPN)
- EcoMerit
- Irish Water
- Gas Networks Ireland
- █
- Wexford Bicycle Users Group (Wex BUG)
- █
- █
- Office of Public Works (OPW)
- Department of Agriculture, Food and the Marine (DAFM)
- Fáilte Ireland
- Extinction Rebellion Wexford
- █
- █
- Future Proof Wexford
- █

### 2.4.3 Summary of Consultation submissions

Table 2 details the summary of responses from each of the organisations and individuals that made a submission to the consultation periods and a summary of the response from Wexford County Council to each of the submissions is detailed.

TABLE 2 SUMMARY OF CONSULTATION SUBMISSIONS AND RESPONSES

Organization / individual	Summary submission	Wexford Co. Co. response
█	<ul style="list-style-type: none"> <li>- Expressed dismay at the paucity of information in the strategy, regarding the promotion of cycling and walking as environmental alternatives.</li> <li>- Suggests Wexford County Council undertakes additional measures to encourage biodiversity.</li> </ul>	<p>Wexford Co. Co. acknowledge the submission and highlights that the strategy fully supports the promotion of sustainable transport measures and strategies in conjunction with the County Development Plan, as provided for by actions contained within Theme 3 – Land use and Development.</p> <p>No text change to this Climate Change Adaptation Strategy.</p>
█	<ul style="list-style-type: none"> <li>- Highlights the contribution of hedgerows to climate adaptation, and the need to preserve them.</li> <li>- Requests that Wexford County Council carries out a county-based hedgerow survey, as recommended in the Report of the Joint Committee on Climate Action (published March 2019).</li> </ul>	<p>Wexford Co. Co. acknowledge the submission and highlights this suggestion is covered in the strategy as it is at the moment, under Theme 5.</p> <p>No text change to this Climate Change Adaptation Strategy.</p>



<p>Wexford Public Participation Network (PPN)</p>	<ul style="list-style-type: none"> <li>- Highlights the organisation’s commitment to climate change, and provides supporting details of the initiatives the organisation is taking to increase awareness and understanding of both climate change and environmental sustainability.</li> <li>- PPN requests that references to the organisation are displayed in the strategy as “Wexford PPN”, to increase familiarity of the organisation.</li> <li>- Requests the inclusion of an Appendix of Acronyms in the strategy, to increase levels of understanding of the document.</li> <li>- Advises that that the organisation is tasked with playing a key role in the community under various actions contained within Theme 6 – Community Health and Wellbeing, and requests an additional budget be made available to deliver on these actions.</li> </ul>	<p>Wexford Co. Co. acknowledge the submission and have made the following text changes:</p> <ul style="list-style-type: none"> <li>o Amend strategy to refer to the network within the document as “Wexford PPN”.</li> <li>o Amend strategy to include an Appendix containing a glossary of acronyms.</li> <li>o Remove the last line in the second last paragraph on P.21 of the strategy.</li> </ul>
<p>██████████ ██████</p>	<ul style="list-style-type: none"> <li>- Highlights Wexford’s Civil Defence, and its ability to deal with extreme weather events.</li> <li>- Suggests the provision of a purpose built civil defence base, to ensure a safe and effective response to future severe weather events.</li> </ul>	<p>Wexford Co. Co. acknowledge the submission and highlights that Provision of resources to achieve this objective fall under the actions contained within Theme 1 – Local Adaptation Governance and Business Operations.</p> <p>No text change to this Climate Change Adaptation Strategy.</p>
<p>EcoMerit</p>	<ul style="list-style-type: none"> <li>- Welcomes the publication of the draft Climate Change Adaptation Strategy and urges Wexford County Council to publish a similar strategy on mitigation.</li> </ul>	<p>Wexford Co. Co. acknowledge the submission, and highlights that actions set out in Chapter 6 of the strategy reflect both adaptation and mitigation measures, to ensure a relevant and integrated approach to combating the effects of climate change in County Wexford.</p> <p>No text change to this Climate Change Adaptation Strategy.</p>
<p>Irish Water</p>	<ul style="list-style-type: none"> <li>- Irish Water welcomes the publication of the strategy, and looks forward to collaborating with Wexford County Council in implementing the measures set out in the recently published government Climate Action Plan, and in the Draft Climate Sectoral Adaptation Plan for Water Quality and Water Services Infrastructure</li> </ul>	<p>Wexford Co. Co. acknowledge the submission and look forward to collaborating.</p> <p>No text change to this Climate Change Adaptation Strategy.</p>
<p>Gas Networks Ireland</p>	<ul style="list-style-type: none"> <li>- Highlighted some of the carbon reduction initiatives that the organisation is involved in.</li> <li>- Details the work in the development of the “Climate Change Adaptation</li> </ul>	<p>Wexford Co. Co. acknowledge the submission and highlights that the strategy fully supports the promotion of renewable energy generation from various sources, which in conjunction with the</p>

	<p>Plan for the Electricity and Gas Network Sector”.</p> <ul style="list-style-type: none"> <li>- Suggests the development of renewable gas production by anaerobic digestion in Co. Wexford, would support Action 21 of Theme 1 of the strategy.</li> <li>- Highlights the benefits of using renewable gas.</li> <li>- Suggests that Wexford County Council supports the rollout of Compressed Natural Gas (CNG) infrastructure on sites it owns and occupies.</li> </ul>	<p>County Development Plan, will provide a cohesive approach to energy provision in County Wexford.</p> <p>No text change to this Climate Change Adaptation Strategy.</p>
<p>[REDACTED]</p>	<ul style="list-style-type: none"> <li>- Highlighting the many health and environmental benefits of cycling, as an active and sustainable method of transport.</li> <li>- Supports the construction of safe, segregated cycling infrastructure on all Wexford’s towns and commuter routes and suggests five mechanisms to achieve this.</li> <li>- Advises that the Council is obliged to prepare a pathway and timetable for the installation of dedicated cycling infrastructure.</li> </ul>	<p>Wexford Co. Co. acknowledge the submission and It should be noted that issues relating to sustainable transport and promoting alternative modes to reduce car dependency and emissions, are largely based on pursuing mitigation measures, which is not the remit of this strategy</p> <p>No text change to this Climate Change Adaptation Strategy.</p>
<p>Wexford Bicycle Users Group</p>	<ul style="list-style-type: none"> <li>- Advises that 10% of the council’s transport budget should be allocated to cycling, and that the council should produce a new rural transport strategy, with both led by DTTAS.</li> <li>- Welcomes the publication of the strategy, but states the strategy has significant gaps and blind spots, such as too narrow a scope, needlessly focused on the risks posed by extreme weather events, and the motor transport-centric view of the authors.</li> <li>- Puts forward a detailed case as to why the council should invest in safe cycling infrastructure.</li> <li>- Advises that using greenways as a cycling policy is not a strategic response.</li> <li>- Suggests the inclusion of three specific items into a design manual for safe, segregated cycling infrastructure.</li> <li>- Queries elements of the strategy such as lack of expertise of contributors, very narrow scope, baseline assessment stating nothing about recovery and the goals being too ambiguous and broad in scope.</li> <li>- Recommends that Council invites the group to take a seat on its climate action steering group, provides a single point of contact to the group, and sends a delegation of councillors and</li> </ul>	<p>Wexford Co. Co. acknowledge the submission and suggests that regarding the allocation of a percentage of the transport budget to cycling and the requirement to prepare a pathway and timetable for the construction of cycling infrastructure, were recommendations in the recently published Joint Oireachtas Committee Report on Addressing Climate Change in Ireland. These recommendations will be implemented by the Department of Transport, Tourism and Sport (DTTAS), in conjunction with local authorities.</p> <p>No text change to this Climate Change Adaptation Strategy.</p>

	<p>planners to take part in a Dutch cycling study tour.</p>	
██████████	<ul style="list-style-type: none"> <li>- Highlights the benefits of cycling as a means of reducing carbon emissions, and provides European data and an example of a UK council scheme to support this.</li> <li>- Supports the allocation of 10% of the transport budget to cycling.</li> <li>- Elaborates on issues with bicycling parking at a local school and the new M11, to demonstrate the failure of national and local strategy with regard to cycling.</li> <li>- Suggests the rollout of electric vehicles on sites owned by Wexford County Council will do nothing to reduce congestion, address low levels of exercise or solve air quality problems.</li> <li>- Recommends that the public sector lead by example in reducing carbon emissions and provides an example of this.</li> <li>- Suggests that a delegation of Wexford councillor and planners take part in a Dutch cycling study tour and offers to facilitate this.</li> </ul>	<p>Wexford Co. Co. acknowledge the submission and that sustainable transport and promoting alternative modes to reduce car dependency and emissions, are largely based on pursuing mitigation measures, which is not the remit of this strategy. The issues raised regarding the allocation of a percentage of the transport budget to cycling and the requirement to prepare a pathway and timetable for the construction of cycling infrastructure, were recommendations in the recently published Joint Oireachtas Committee Report on Addressing Climate Change in Ireland.</p> <p>No text change to this Climate Change Adaptation Strategy.</p>
██████████	<ul style="list-style-type: none"> <li>- States his agreement with Wexford Bicycle Users Group statements, that cycling is both an adaptation and mitigation measure.</li> <li>- Supports the construction of safe, segregated cycling infrastructure on all Wexford's towns and commuter routes and advises that the Council is obliged to prepare a pathway and timetable for this.</li> <li>- Supports the diversion of 10% of transport infrastructure monies for the implementation of dedicated cycling infrastructure.</li> </ul>	<p>Wexford Co. Co. acknowledge the submission and similar to the Wexford Bicycle Users Group, that allocation of a percentage of the transport budget to cycling and the requirement to prepare a pathway and timetable for the construction of cycling infrastructure, were recommendations in the recently published Joint Oireachtas Committee Report on Addressing Climate Change in Ireland. These recommendations will be implemented by the Department of Transport, Tourism and Sport (DTTAS), in conjunction with local authorities.</p> <p>No text change to this Climate Change Adaptation Strategy.</p>
Office of Public Works (OPW)	<ul style="list-style-type: none"> <li>- Highlights key flood related issues for consideration by all Local Authorities and suggests seven minor changes in the text of this draft strategy.</li> <li>- Would welcome the promotion and support of a Tranche 1 Flood Protection Scheme in Wexford Town.</li> <li>- Suggests providing a description concerning the existing level of flood risk, making reference to past flood events and, where available, predictive assessments of flood hazard and risk</li> </ul>	<p>Wexford Co. Co. acknowledge the submission and have made the following text changes:</p> <ul style="list-style-type: none"> <li>o Amend Action 5 of Objective 1 – Theme 4, to include the implementation of Major OPW flood defence works such as the Tranche 1 Wexford Town FRMS scheme.</li> <li>o Insert additional narrative in Chapter P.41 of the strategy, to provide a more</li> </ul>

	<p>using various available information sources such as PFRA and CFRAM.</p> <ul style="list-style-type: none"> <li>- Suggests the usage of future scenario flood maps undertaken under CFRAM, to assist in identification of communities vulnerable to increased risk.</li> <li>- Suggests the promotion of Sustainable Urban Drainage Systems (SUDS), with consideration for the potential increases in intense rainfall events, and the impact of more intense rainfall events on urban storm water drainage systems.</li> <li>- Suggests Natural Water Retention Measures is a new approach to manage flood risk, with a key benefit of these measures being as a means of climate adaptation.</li> <li>- Advises that forward planning and development management are critical for sustainable flood risk management in Ireland, and suggests four specific ways this can be taken account of in the planning process.</li> <li>- Suggests that future scenario flood maps may assist in the identification of potentially vulnerable assets.</li> <li>- Would welcome an objective taking increased flood extents and depths into account during the planning and implementation of new infrastructure, to avoid potentially flood prone areas and ensure new infrastructure is resilient to such risks.</li> <li>- Suggests that increases in the frequency and severity of flood events may necessitate more frequent and resource intensive emergency responses from the first responders, which should be considered in the preparation of the strategy.</li> <li>- Advises that the organisation has no remit in under Spatial Planning and Land Use and Coastal Erosion, as listed in various climate hazards in the Baseline Assessment.</li> </ul>	<p>detailed summary of the PRFA/CFRAM, with information concerning existing, past and future levels of flooding and flood risk.</p> <ul style="list-style-type: none"> <li>o Amend Action 7 of Objective 1 – Theme 4, to include reference to the usage of future scenario flood maps provided by CFRAMS.</li> <li>o Remove reference to OPW from the Spatial Land Use &amp; Planning sections of the Baseline Assessment on P.58 and P.63 of the strategy.</li> <li>o Remove reference to OPW from the Coastal sections of the Baseline Assessment on P. 46 and P.55 of the strategy.</li> <li>o Amend Action 1 of Objective 1 – Theme 4, to remove reference to second cycle of CFRAMS, and include reference to the National Indicative Fluvial Mapping (NIFM) currently underway.</li> </ul>
<p>The Department of Agriculture, Food and the Marine (DAFM)</p>	<ul style="list-style-type: none"> <li>- Advises that the strategy has not adequately addressed the role of the agricultural, forestry and seafood sectors.</li> <li>- States that agriculture is not the single largest contributor to overall emissions as stated in the strategy, when measured against output.</li> <li>- Suggests that issues such as forestry planting/management, soil erosion, farming intensity etc., will influence adaptation and mitigation decisions at a county level.</li> </ul>	<p>Wexford Co. Co. acknowledge the submission and suggests that issues raised in the submission are best explored and dealt with in the Sectoral Adaptation Plan for Agriculture, Forestry and Seafood, and I note that the DAFM has been identified as the lead department for undertaking this plan under the 2018 National Adaptation Framework. In addition Action 22 of Theme 1 also provides for collaboration between Wexford County</p>

	<ul style="list-style-type: none"> <li>- Queries the lack of inclusion from the agricultural sector and farming community in the strategy.</li> <li>- Suggests the strategy could take note of the role of land use in the water system, which could provide localised climate benefits, and cites well - planned and managed forests as an example.</li> <li>- Acknowledges the specific action in the strategy, to ensure the protection of waters in Wexford by implementing various National Plans and Directives.</li> <li>- Highlights climate change impacts on the aquaculture industry.</li> <li>- Provides general observations on seven identified impacts that are of cross sectoral concern to both the department, and local authorities.</li> </ul>	<p>Council and identified sectors to deliver sectoral adaptation actions, where relevant to the functions and services of the council.</p> <p>No text change to this Climate Change Adaptation Strategy.</p>
Fáilte Ireland	<ul style="list-style-type: none"> <li>- Provides an overview of the economic value of the tourism industry to the Irish Economy and re-iterates the importance of the industry as an economic factor for regional development.</li> <li>- Provides a brief overview of the potential impacts of climate change on the tourism industry in Ireland.</li> <li>- Requests that adaptation and mitigation measures undertaken carefully consider any unintended consequences for tourism that may arise and gives two examples to demonstrate this.</li> </ul>	<p>Wexford Co. Co. acknowledge the submission and have made the following text changes:</p> <ul style="list-style-type: none"> <li>o Amend Action 4 of Theme 5, to remove reference to development of the draft Tourism Strategy.</li> <li>o Amend Action 7 of Theme 3 and Action 3 of Theme 5, to include the word tourism.</li> </ul>
Extinction Rebellion (Wexford)	<ul style="list-style-type: none"> <li>- Feels that that there are a few areas in the strategy that fall short.</li> <li>- States the plan fails to impress the extent of the climate emergency on readers.</li> <li>- Advises that adaptation is only part of the battle, and that the adaptation plan is only useful if a climate mitigation plan is also drawn up.</li> </ul>	<p>Wexford Co. Co. acknowledge the submission and highlights that the actions set out in Chapter 6 of this strategy reflect both adaptation and mitigation measures as a considered approach to climate change.</p> <p>No text change to this Climate Change Adaptation Strategy.</p>
[REDACTED]	<ul style="list-style-type: none"> <li>- States that cycling as a means of active transport, is both a mitigation and adaptation action.</li> <li>- Supports the construction of safe, segregated cycling infrastructure on all Wexford's towns and commuter routes and suggests de-prioritising expenditure on motor vehicle infrastructure to achieve this.</li> <li>- Supports a strategic examination of all Wexford's urban and rural roads, to ascertain how they can be made safe for cyclists and walkers.</li> </ul>	<p>Wexford Co. Co. acknowledge the submission and it is considered that the issues raised in the submission, have been dealt with in the response to submissions 9 and 10 of this report.</p> <p>No text change to this Climate Change Adaptation Strategy.</p>

	<ul style="list-style-type: none"> <li>- Advises that Wexford County Council is obliged to prepare a pathway and timetable for the installation of dedicated cycling infrastructure and supports the diversion of at least 10% of money available for transport infrastructure to achieve this.</li> <li>- Supports the appointment of a cycling officer and the development of design manuals for safe and segregated cycling infrastructure.</li> </ul>	
██████████	<ul style="list-style-type: none"> <li>- Suggests the plan fails to convey the extent of the climate emergency to the reader, or the swiftness of action required to prevent further climate breakdown.</li> <li>- Advises of a lack of specific plans to tackle emissions from agriculture and transport.</li> <li>- States the plan does not acknowledge that measures to deal with climate change are only worthy if mitigation is also prioritised.</li> </ul>	<p>Wexford Co. Co. acknowledge the submission and highlights that the primary focus of this strategy is adaptation, and not mitigation.</p> <p>No text change to this Climate Change Adaptation Strategy.</p>
Future-Proof Wexford	<ul style="list-style-type: none"> <li>- 3 separate submissions from the organisation were received</li> <li>- Requesting that special attention be given to areas that have experienced past flooding from rivers.</li> <li>- Requesting that Wexford County Council carry out annual monitoring of coastal erosion rates.</li> <li>- Expresses the hope that various SPC's get an opportunity to discuss the strategy.</li> </ul>	<p>Wexford Co. Co. acknowledge the submission and that some of the issues do not relate to Wexford County Councils draft strategy, and thus do not fall under the remit of this strategy.</p> <p>No text change to this Climate Change Adaptation Strategy.</p>
██████████	<ul style="list-style-type: none"> <li>- Requests that the period of public consultation be extended to 9th September 2019 and makes the request as a nominated member of the new Environment and Climate Change Strategic Policy Committee (SPC).</li> <li>- Requests that all SPC's have direct input to the development of the draft strategy.</li> </ul>	<p>Wexford Co. Co. acknowledge the submission and noted the content.</p> <p>No text change to this Climate Change Adaptation Strategy.</p>

The Chief Executive Report on Submissions attached with Wexford's Climate Change Adaptation Strategy provides a details response to each of the submissions.

## 2.5 Appropriate Assessment

An Appropriate Assessment Screening Report has also been prepared for this Climate Change Adaptation Strategy in line with Article 6(3) of the EU Habitats Directive (92/43/EEC). The Report concludes:

In conclusion, further to a screening of Wexford County Council's Climate Change Adaptation Strategy for possible significant effects on Natura 2000 sites no significant effects were identified.

The screening outlined in this report included an assessment of possible in-combination effects. Based on the objective information contained in this report and applying the precautionary principle, it is concluded that the Climate Change Adaptation Strategy will not have a significant effect on Natura 2000 sites.

The AA Screening Report accompanies Wexford's Climate Change Adaptation Strategy.

### 3 DETERMINING WHETHER AN SEA IS REQUIRED

The objective of the SEA Directive for the assessment of the effects of certain plans and programmes on the Environment is to

“provide for a high level of protection of the environment and to contribute to the integration of environmental considerations into the preparation and adoption of plans and programmes with a view to promoting sustainable development, by ensuring that, in accordance with this Directive, an environmental assessment is carried out of certain plans and programmes which are likely to have significant effects on the environment.”<sup>3</sup>

Post the Environmental Authority and Public Consultation, the updated Climate Change Adaptation Strategy was screened for SEA requirements. The below details the SEA screening process carried out.

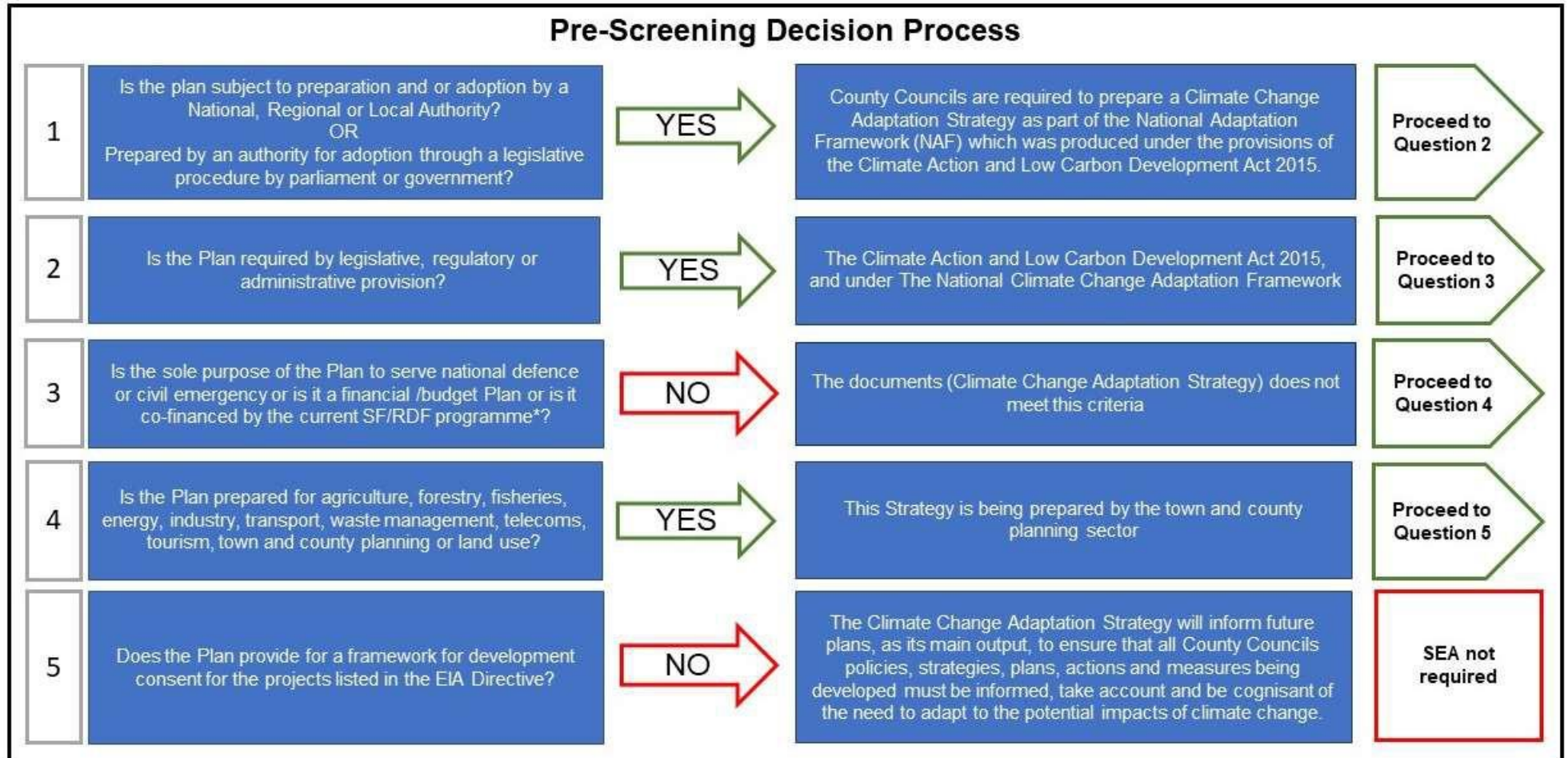
#### 3.1 Requirement to carry out SEA – Pre-Screening Checklist

In order to determine if this Strategy is considered a plan/programme under Article 3 of the SEA Directive, a pre-screening check is necessary. Figure 1 below provides details of the pre-screening checklist; this checklist is based on the decision tree published by the EPA in the Development of SEA methodologies for plans and programmes in Ireland.<sup>4</sup>

---

<sup>3</sup> Directive 2001/42/EC of the European Parliament and of the Council of Ministers, of 27th June 2001, on the Assessment of the Effects of Certain Plans and Programmes on the Environment

<sup>4</sup> P. Scott & P. Marsden., 2001-EEP/DS-2/5 Development of Strategic Environmental Assessment (SEA) Methodologies for Plans and Programmes in Ireland Synthesis Report © Environmental Protection Agency 2003



\*SF/RDF: Structural Funds and Regional Development Funds under Council Regulation (EC) Nos. 1260/99 and 1257/99 which operate programming periods of 2000–2006 and 2000–2007, respectively.

FIGURE 1 PRE-SCREENING DECISION PROCESS



## 4 SEA SCREENING DETERMINATION

The Climate Change Adaptation Strategy was screened using the criteria contained in Annex II of the SEA Directive. Table 3 and Table 4 below, details the screening assessment using the criteria for determining the likely significance of effects as set out in the SEA Directive, Annex II.

TABLE 3 SCREENING DETERMINATION FOR ANNEX II (1.), CRITERIA FOR DETERMINING THE LIKELY SIGNIFICANCE OF EFFECTS

The Characteristics of the Plan and Programmes having regard, in particular, to, the following criteria	
Criteria	Screening Determination
The degree to which the plan or programme sets a framework for projects and other activities, either with regard to the location, nature, size and operating conditions or by allocating resources.	<p>The purpose of this Climate Adaptation Strategy is to identify the risks to Wexford County associated with climate change, and to set strategic goals, objectives and actions to adapt to these changes.</p> <p>Wexford County Council's Climate Change Adaptation Strategy forms part of Ireland's national strategy for climate adaptation as set out in the National Adaptation Framework (NAF) which was produced under the provisions of the Climate Action and Low Carbon Development Act 2015.</p> <p>Wexford County Council's Climate Change Adaptation Strategy, if adopted, will not set a framework for future development consent of projects, i.e. projects listed in both Annex I and Annex II of the Environmental Impact Assessment Directive.</p>
The degree to which the plan or programme influences other plans and programmes including those in a hierarchy;	<p>This Climate Change Adaptation Strategy will inform other future plans, as its main output, to ensure that Wexford County Councils policies, strategies, plans, actions and measures being developed must be informed, take account and be aware of the need to adapt to the impacts of climate change.</p> <p>Future individual county development policies, strategies, plans and projects must be considered under the SEA, EIA and/or AA processes.</p>
The relevance of the plan or programme for the integration of environmental considerations in particular with a view to promoting sustainable development;	<p>As the Climate Change Adaptation Strategy is aimed at integrating climate change adaptation into Wexford County Councils plans, strategies and management team's agendas, the climate change adaptation measures will be implemented via future plans.</p> <p>This Climate Change Adaptation Strategy's main output is to ensure that all policies, strategies and</p>

	<p>plans for Wexford County Council must be informed of the need to adapt to the potential impacts of climate change.</p> <p>Individual county development policies, strategies, plans and projects must be considered individually under the SEA, EIA and/or AA process.</p>
<p>Environmental problems relevant to the plan or programme;</p>	<p>The Climate Change Adaptation Strategy looks to integrate climate change adaptation into Wexford County Council as a management function and/or an important criterion to be considering in developing Local Authority Plans or Actions. The climate change adaptation actions taken will be implemented via future plans as its main output is to ensure that all policies, strategies, plans and measures for Wexford County Council must be informed of the need to adapt to the potential impacts of climate change.</p> <p>Individual county development policies, strategies, plans and projects must be considered individually under the SEA, EIA and/or AA process.</p>
<p>The relevance of the plan or programme for the implementation of Community legislation on the environment (e.g. plans and programmes linked to waste-management or water protection).</p>	<p>As the Climate Change Adaptation Strategy is aimed at integrating climate change adaptation into identified Wexford County Councils Plans and Strategies and future Plans and Strategies, with some specific actions to help raise awareness of climate change both within management team and the wider public in Wexford County, these actions can support plans and programmes that are related to waste generation, management, flood resilience and protection.</p> <p>However, these climate change adaptation actions will be implemented via future plans as its main output is to ensure that all policies, strategies, plans and measures for Wexford County Council must be informed of the need to adapt to the potential impacts of climate change.</p>

TABLE 4 SCREENING DETERMINATION FOR ANNEX II (2.), CRITERIA FOR DETERMINING THE LIKELY SIGNIFICANCE OF EFFECTS

Characteristics of the Effects and of the Area Likely to be Affected, taking account of the following criteria	
Criteria	Screening Determination
The probability, duration, frequency and reversibility of the effects	<p>Wexford County Council Climate Change Adaptation Strategy is aimed at integrating climate change adaptation into the Local Authorities plans, strategies and management agendas, this in itself will help develop climate resilience.</p> <p>The climate change adaptation actions will be implemented via future plans as its main output is to ensure that all policies, strategies, plans and measures developed by Wexford County Council must be informed of the need to adapt to the potential impacts of climate change.</p> <p>Individual policies, strategies, plans and measures must be considered individually under the SEA, EIA and/or AA process.</p> <p>Any and all effects uncovered as part of this process will be considered in relation to the characteristics of the effects and of the area likely to be affected and the process will have regard, in particular, to the criteria as listed, according to the legislation.</p>
The cumulative nature of the effects	
The transboundary nature of the effects	
The risks to human health or the environment (e.g. due to accidents)	
The magnitude and spatial extent of the effects (geographical area and size of the population likely to be affected)	
<ul style="list-style-type: none"> <li>- special natural characteristics or cultural heritage;</li> <li>- exceeded environmental quality standards or limit values; and</li> <li>- intensive land-use.</li> </ul>	
The effects on areas or landscapes which have a recognised national, community or international protection status.	

## 5 CONCLUSION

This SEA Screening Report was carried out in order to determine the need for a Strategic Environmental Assessment for Wexford County Council Climate Change Adaptation Strategy prepared under the National Climate Change Adaptation Framework. It has been concluded, based on the pre-screening check, and review against the environmental significance criteria as set out in Annex II of the SEA Directive, that a Strategic Environmental Assessment is not required. This is due to the fact that this Strategy does not provide a framework for development consent for projects listed in the EIA Directive. Furthermore, the purpose of this Climate Change Adaptation Strategy is to inform Local Authority policies, procedures and further plans on the need to incorporate climate change adaptation measures and it does not set out projects, plans or specific programmes.

## APPENDIX 1 CLIMATE CHANGE ADAPTATION STRATEGY – ACTIONS PER THEME

Theme 1: Local Adaptation Governance and Business Operations	Actions
1	Establish a Climate Action Steering Group with representatives from across key functions of local authority to ensure the successful implementation of the actions of this Climate Change Adaptation Strategy and to report on progress.
2	Mainstream Climate Action policy as integral consideration in the Corporate Plan objectives providing for the all local authority activities and the delivery of functions and services across the administrative area.
3	The Appointment of a designated Climate Action officer at executive scientist/engineer grade is recommended.
4	Consider a change in directors role and title from Director of Services, Housing, Community, Libraries, Arts, Emergency Services & Environment, Enniscorthy Municipal District to Director of Services, Housing, Community, Libraries, Arts, Emergency Services, Environment and Climate Change, Enniscorthy Municipal District
5	Establish a climate champion within each section of the organisation.
6	Promote and encourage the public to sign up to mapalserter and twitter notifications for extreme weather notifications and alerts including coastal alerts.
7	Building on adaptation planning actions set out in this strategy, support and compliment the practical implementation of actions arising from the National Action Plan – To tackle Climate Breakdown(as revised and updated annually), across the broad range of functions of the local authority to achieve the national climate ambition, i.e. decarbonisation targets to 2030 and objectives to 2050.
8	Ensure through the delivery of all services, functions and activities that there is more effective implementation of relevant regulations, policies, plans and strategies with a role in climate adaptation and environmental protection
9	Integrate Climate Action into the Service Delivery Programme and provide for its translation to Team Development Plans to enable actions to be directly pursued per operational area.
10	Use the offices of the procurement officer to promote green procurement in Wexford County Council such that services, goods, and works procured contribute to and support climate action objectives and wider environmental objectives whilst representing value for money.
11	The Climate Action Steering Group will be assigned with managing and overseeing the effective mainstreaming of Adaptation measures into plans, programmes, strategies and policies of Wexford County Council
12	Promote the incorporation of the paperless strategy into all areas of Wexford County Council. Moving from paper to electronic will also facilitate the provision of a sustainable and accessible service, tapping into the resources available in this digital age. This will support maintenance of service provision even when the offices are closed for example during heavy snow.
13	Review and Develop the Business Continuity Plan to identify and address specifically, the impacts associated with extreme weather events on all IT functions/services of the local authority and explore potential opportunities to increase resilience. This will involve: <ul style="list-style-type: none"> <li>•Preparing for critical services disruptions,</li> <li>•Assessment of the Local Authority’s back-up system’s infrastructure and review of power outage back-up procedures to ensure resilience.</li> <li>•Developing a network access contingency plan for identified essential key staff to be able to access all essential council systems remotely due to a climate event to reduce or eliminate climate event impacts on statutory deadlines and backlog</li> </ul>
14	Develop a vehicle policy to include for the use of vehicles suitably adapted for extreme weather events and undertake vehicle suitability assessments regularly to ensure timely and necessary maintenance for effective operation in challenging conditions.
15	Develop a centralised repository for information gathered on extreme events including costings/mapping etc.
16	Continue to develop on the internal severe weather plan, flood plan and major emergency plan to avoid ambiguity, increase staff awareness, highlight potential risk to safety and to ensure all staff travel only in safe conditions
17	Health and safety risks relating to Climate Change and extreme weather events to be considered at the review of the parent Safety Statement in December 2019.
18	Evaluate and document resources deployed for the management, maintenance, repairs and clean-up operations after extreme weather events taking full account of hours and costs involved and impact on service delivery and including: <ul style="list-style-type: none"> <li>•Increased operational costs</li> <li>•Increased maintenance costs</li> <li>•Increased contractor and out-of hours costs</li> </ul> Additional funding sought/received
19	Build expertise, capacity and increase knowledge base through relevant training programmes on Climate Change and its implications on the operations/functions of Wexford County Council. Training programmes may include: <ul style="list-style-type: none"> <li>•Climate Change awareness training to staff, Elected Members and communities</li> <li>•Pollinator awareness</li> <li>•Invasive species awareness and management training</li> <li>•Relevant safety training</li> <li>•Staff training for outdoor staff in service delivery in flood situations</li> </ul>
20	Identify and source funding streams for the active implementation of adaptation and mitigation actions and measures across County Wexford eg Climate Action Fund, Community Environment Action Fund
21	Through the work of the LEO Wexford, support, encourage and nurture new ideas seeking to capture opportunities associated with environmental and technological advances that support low carbon transition. eg. Energy Summit

22	Encourage and promote renewable energy generation and storage technologies that will contribute positively and grow the Circular and Bio-economy to promote sustainable rural and urban economic development as part of the overall aim of transiting to a low carbon economy with reduced greenhouse gases.
23	Liaise, collaborate and work in partnership with the sectors identified in the National Adaptation Framework, subject to funding, in the delivery of the Government approved sectoral adaptation actions, where they relate and are relevant to the functions and activities of the council at local level/in local communities.
24	In line with strategic Objective 1 of the South East Regional Enterprise Plan to 2020, promote green growth initiatives to reduce the environment footprint and respond to consumer demand in training such as the Wexford-Waterford ETB initiative in nZEB training.
25	In line with strategic Objective 5 of South East Regional Enterprise Plan to 2020, continue the work to roll out an integrated network of greenways, blueways and key trails that stretch across the South East region and connect to networks outside of the region.

Theme 2: Infrastructure and Built Environment	Actions
1	Identify asset manager and apply a robust risk assessment and management framework to Local Authority owned buildings, properties and built heritage to identify and protect against the key vulnerabilities to the impacts of climate change and mitigate against service disruption.
2	Integrate climate considerations into the design, planning and construction of all roads, bridges, housing, public realm and other construction projects and make provision to incorporate green infrastructure as a mechanism for carbon offset in such projects as well as for wider environmental benefits such as providing shade to alleviate heat stress, supporting urban biodiversity, water retention and flood alleviation.
3	Undertake a Risk Assessment of road infrastructure to identify the severity of climate change risks on their function and condition. The findings should be integrated into decision making processes, road infrastructure programmes and investment strategies.
4	Undertake risk assessment of all existing Local authority buildings, housing stock including derelict and vacant building and built heritage for extreme weather events and assess for future impacts from climate change.
5	<p>Explore ways to minimise the expected increase in maintenance requirements and costs to roads, housing , water and wastewater infrastructure from climate stress:</p> <ul style="list-style-type: none"> <li>•Integrating climate change considerations at design stages.</li> <li>•Explore the climate resilience of materials used in road, housing water &amp; wastewater construction and maintenance</li> <li>•Examine options to reduce road settlement due to severe weather events</li> <li>•Assessment of gully clearing and maintenance plans with aim to become more proactive to reduce costs in the future.</li> </ul>
6	Undertake a monitoring and inspection programme for harbours piers, marinas and quays.
7	Develop a procedure to prioritise major fishing harbours, piers and marinas for clearance and access as best practice in extreme weather events.
8	Undertake a Monitoring and Maintenance programme on existing public coastal defences.
9	Develop an inventory of all back up equipment available for water abstraction and wastewater treatment infrastructure for use during extreme weather events and review and develop on remote monitoring and adjustments of systems.
10	Prepare an Energy engagement strategy for the organisation to facilitate behavioural change relating to improved energy efficiency and associated reduction in carbon emissions.
11	<p>Review of Wexford Co Co developments with a view to ensuring energy efficiency measures are being considering at the design stage and incorporated during construction and operation phases.</p> <p>New Local Authority Buildings and housing stock should be built to nZEB or passive housing standards and to take account of climate change adaptation.</p>
12	Continue to support the roll out of the Public lighting retrofits. Public lighting is Wexford County Council's largest consumer of energy at up to 60% of the total energy consumption of the council. 40% of public lights switched to date which shall increase to 60% by end 2019 and 100% by 2020.
13	Promote Wexford as a low carbon county and to facilitate the development of energy sources which will achieve low carbon.
14	Provide information and advice to housing tenants to address fuel/energy poverty issues; minimize carbon emissions; improve air quality and improve health of residents.
15	<p>Wexford Town is a low smoke zone. Continue to highlight the health and environment benefits of using low smoke fuel and the air quality issues associated with smoky fuel.</p> <p>Wexford County Council is considering introducing a county wide smoky fuel ban in County Wexford.</p>

Theme 3: Landuse and Development	Actions
1	Identify and integrate climate change as a critical consideration and guiding principle informing core strategic objectives policies and development standards of the County Development Plan.
2	During the review of Wexford County Council Development Plan 2013-2019 examine and tailor planning policies to reduce the vulnerability of Co. Wexford to the impacts of climate change.
3	Integrate and promote climate-smart building and urban design performance outcomes in development standards through the development management process.
4	Ensure adherence to coastal management section of County development plan. Ensure collaborations with Waterford and Wicklow County Councils in relation to integrated Coastal Zone management.
5	Ensure Sea level change is incorporated into all flood risk mapping in association with the Irish Coastal Protection strategy Study.
6	Support the objectives of the County Development plan in particular CZM09 and CZM10 in restricting development outside the boundaries of existing coastal settlements to that which is required while directing new development away from coastal settlements in addition to CC09 which looks to promote and encourage new developments to mitigate against and adapt to climate change through location layout and design of the development.
7	Promote the integrated planning, design and delivery of green infrastructure (including urban greening) through appropriate provisions in planning policies, development standards, infrastructural, public realm, tourism and community projects.
8	Research and incorporate, in the context of the County Development Plan, measures in accordance with section 10 (n) of the Planning and Development Acts 2000 (as amended) for: the promotion of sustainable settlement and transportation strategies in urban and rural areas including the promotion of measures to— (i) reduce energy demand in response to the likelihood of increases in energy and other costs due to long-term decline in non-renewable resources, (ii) reduce anthropogenic greenhouse gas emissions, and (iii) address the necessity of adaptation to climate change; in particular, having regard to location, layout and design of new development.
9	Support the rollout of Electric Vehicle (EV) charging Infrastructure on: •Sites owned and occupied by Wexford County Council. •Private sites through supportive policies and development control standards.
10	Increase awareness of local authority housing tenants on the potential impacts on housing from climate change events. This is to include updating the tenants handbook to provide the necessary climate change resilience information to tenants and providing Local authority housing tenants with “Preparing for the unexpected” written guide to help tenants prepare for emergencies such as severe weather events. The guide will support tenants, help them make sensible preparations in advance so they can be more self-sufficient during an emergency.



Theme 4: Drainage and Flood Management	Actions
1	Work with CFRAM programme to prioritise projects to reduce flood risk and provide for detailed mapping of areas prone to fluvial and tidal flood risk. The National Indicative Fluvial Mapping (NIFM) is currently underway, and will help inform the implementation of the strategy.
2	Stipulate the requirement for the design and specification of urban storm water drainage systems for new developments to take account of the potential future impact of climate change.
3	Incorporate the requirement for Sustainable Urban Drainage Systems where appropriate in local authority projects and private development sites.
4	Assess the need for upgrades of drainage systems including separation of sewer and surface water required to reduce risk of capacity pressure on drainage systems.
5	Incorporate considerations of the impact of climate change into proposals submitted under the OPW Minor Works Programme and implement Major OPW Flood defence Works such as the Tranche 1 Wexford Town FRMS Scheme to ensure that measures proposed are adaptable to future changes.
6	Assess potential of identifying and designating Natural Planning Flood Plains by way of a Green Infrastructure Strategy to allow for natural and unhindered inundation.
7	Ensure that potential future flood information is obtained by way of a Flood Risk Assessment (FRA) and usage of future scenario flood maps provided by CFRAMS. These will be used to inform suitable adaptation requirements within the Development Management process and for preparation of the County Development Plan, in line with the Guidelines for Planning Authorities on Flood Risk Management (DoECLG & OPW, 2009).
8	Ensure that major emergency response plan and Flood Plan are reviewed annually to ensure the appropriate resource capacity is in place to provide an effective flood emergency response.
9	Evaluate the stock and equipment in place, to ensure equipment is readily available for times of flood, to minimise the impacts on people and property.
10	Develop a gulley maintenance and cleaning plan to ensure that programs are in place in all towns and villages prone to flooding and that all gulleys are cleaned in advance of the Autumn and winter seasons.
11	Undertake a surface water management plan for the assessment and management of flood risks with the aim of reducing the adverse consequences of flooding and impacts on drinking water supplies and abstraction points to prioritise projects to reduce surface water flood risk and provide detailed mapping of areas prone to surface or groundwater risk.
12	Consider expanding the early warning river water level alert currently in place to all flood risk areas.
13	Ensure Emergency Services have access to adequate water during times of drought.
14	Explore ways to harvest and store water during times of significant rain to be used in drought times.
15	Assess how Wexford County Council can continue to supply adequately treated water during times of drought through alternative/additional ground or surface water supplies.

Theme 5: Natural Resources and Cultural Infrastructure	Actions
1	Undertake a monitoring and inspection programme for vulnerable areas of the coast especially following extreme events in particular those areas identified at risk from erosion in the South east and South Irish Coastal Protection strategy studies.
2	Undertake a risk assessment of trees located near critical infrastructure to examine their condition and the associated risk to infrastructure and public safety due to major wind events.
3	Develop a strategy to undertake and implement a Native tree planting programme in conjunction with an awareness campaign that informs of the benefits to communities in improving air quality, offsetting carbon emissions, promoting biodiversity, limiting flood risk, and reducing urban heat. Ensure that any trees to be planted are provided at locations that are suitable to avoid future impact to infrastructure or public safety.
4	Integrate natural borders/buffers to be included as an integral component of the design of greenways/blueways, tracks and trails, tourism and amenity areas to promote natural enhancement. Consult with NPWS to ensure buffer zones are provided, maintained and protected to avoid potential impacts on designated habitats or protected species and habitats and to protect and enhance wider biodiversity.
5	Support all National and Regional initiatives to explore the consequences of climate change impacts on heritage and cultural sites, and the potential for loss of tourism resources.
6	Ensure the protection and improvement of waters in Wexford through the implementation of Water framework Directive, River Basin management Plan and Local Authority Water Programme takes account of climate change and associated impact on status of waters.
6	Review of the Biodiversity Plan to ensure the actions within the plan promote best practice in relation to the adverse impacts of climate change. The protection and support of Pollinators is promoted in line with the actions outlined in the All Ireland Pollinator plan 2015-2020.
7	Develop and implement an awareness campaign around the role of the natural environment and its positive contribution to Climate Action through green schools.
8	Continue to support measures to protect and enhance beaches in the county to retain the blue flag status and green coast awards.
9	Ensure the protection and quality of bathing waters in County Wexford by continuing to implement the bathing water programme of sampling and testing before and during the bathing water season.
10	Promote the “Leave no Trace” scheme in place for Beaches and natural environment to increase awareness and promote and inspire responsible outdoor recreation through education, research and partnerships.
11	Provide Information Awareness of the impact of Climate Change on the Heritage and Cultural Assets of the County.
12	Protect wetlands from inappropriate infilling activities through the appropriate utilisation of the Waste Permitting Process.
13	Support the ongoing programme for the use of virtual marker buoys as a navigational tool particularly in waters where changes in seabed levels occur especially following extreme weather events.

Theme 6: Community Health and Wellbeing	Actions
1	Through public participation network and the community resilience group raise awareness of the impacts of climate change and ways for communities to increase response and resilience to these impacts.
2	Explore ways in which Wexford County Council can assist communities across the county in the context of their vulnerability to the impacts of climate change.
3	Encourage community groups particularly Tidy Towns groups to consider climate change adaptation in their multi annual plans and programs to reduce climatic risks in their community.
4	Assess how the Local Authority can continue to provide needed treated water during times of low rainfall to Wexford County Council group water schemes
5	Encourage more communities to actively pursue projects to reduce energy consumption and their carbon footprint.
6	Wexford County Council communications office in conjunction with the Library Service should develop a series of information packages on climate adaptation and mitigation and how individuals and communities can play their parts.