



**Comhairle Contae
Loch Garman
Wexford
County Council**



Traveller Accommodation Programme 2019-2024

March 2019

Table of Contents

Acronyms/Glossary of Terms	3
Executive Summary	4
Section 1 – Introduction	5
Section 2 – Policy Framework.....	6
2.1 Wexford County Development Plan 2013-2019.....	7
2.2 Wexford Local Economic and Community Plan (LECP)	7
2.2.1 Traveller Interagency Group (TIG)	7
Section 3 – Policy Statement	8
3.1 Anti-Social Behaviour	8
3.2 Traveller Specific Accommodation	9
3.3 Unauthorised Encampments	9
Section 4 – Statistics	9
4.1 Spatial pattern of Traveller population	10
Section 5 – Assessment of Need	11
5.1 Current Profile in Co Wexford.....	12
5.2 Analysis of Annual Traveller Count.....	13
Section 6 – Role of Wexford County Council	14
6.1 Accommodation Types	14
6.2 Consultation.....	14
6.2.1 Local Traveller Accommodation Consultative Committee (LTACC).....	15
6.3 Housing Teams	15
6.3.1 Area Housing Officer (AHO).....	16
6.3.2 Housing Liaison Officer (HLO)	16
6.3.3 Social Worker.....	16
6.3.4 Pre-tenancy meetings	17
6.3.5 Tenant Participation and Estate Management	17
6.3.6 Emergency Accommodation	17

6.4	Maintenance	17
6.5	Fire Safety	18
6.5.1	Fire Safety output.....	18
Section 7 – Evaluation of TAP 2014-2018		19
7.1	Targets 2014-2018	19
7.2	Progress Achieved - TAP 2014-2018	19
7.3	Housing Output.....	20
Section 8 – Traveller Accommodation Programme 2019-2024.....		21
8.1	Analysis of Assessment of Need	21
8.2	Projected Accommodation Needs 2019-2024	22
8.3	Annual Targets	23
8.4	Implementation Strategy.....	23
8.4.1	Private Rented	23
8.4.2	Standard Social Housing.....	24
8.4.3	Traveller Group Housing	24
8.4.4	Approved Housing Bodies (AHB).....	24
8.5	Review of TAP 2019-2024.....	25
8.6	Funding	25
Section 9 - Conclusion.....		26
9.1	New Municipal Districts	26
Appendix 1 – Map of Municipal Districts		27
Appendix 2 – Map of New Municipal Districts		28
Appendix 3 – Submissions.....		29
Appendix 4 – Committees		33

Acronyms/Glossary of Terms

AHB Approved Housing Body	AHO Area Housing Officer
ASW Area Social Worker	CAS Capital Assistance Scheme
DHPLG Department of Housing, Planning and Local Government	HAP Housing Assistance Payment
HLO Housing Liaison Officer	LTACC Local Traveller Accommodation Consultative Committee
RAS Rental Accommodation Scheme	TAP Traveller Accommodation Programme
TIG Traveller Interagency Group	SI Statutory Instrument
WCC Wexford County Council	WLECP Wexford Local Economic and Community Plan

Traveller Group Housing

A scheme of two or more houses specifically built for members of the Traveller Community.

Transitional Site

A transitional site provides basic facilities for families awaiting permanent accommodation.

Permanent Halting Site

A permanent halting site has individual bays with a full range of services provided in a small structure on each bay.

Temporary Halting Site

A temporary halting site has individual bays consisting of a yard with basic services.

Single Site

A house or site on its own grounds.

Transient Site

A transient halting site is a site providing basic facilities for short-term use by families pursuing a nomadic way of life or visiting relatives.

Executive Summary

Wexford County Council prepared this Traveller Accommodation Programme (TAP) in accordance with the Housing (Traveller Accommodation) Act 1988 and with the directions issued by the Minister for Housing and Urban Development in Circular 35/2018 and the guidelines for the preparation, adoption and implementation of TAP 2019-2024. This programme aims to meet the accommodation needs of Traveller families in the county for the 5 year period from 1st July to 30th June 2024.

An assessment of housing need was carried out in December 2018 and updated in February 2019 which identified 99 families in need of accommodation. Four families expressed an interest in Traveller Group Housing in the Wexford Municipal District Area and the other ninety five chose social housing. Its estimated that the projected growth within the next 5 years of 0.5% (based on Census data) Wexford County Council (WCC) will endeavour to provide **100** accommodation units within the lifetime of the Traveller Accommodation Programme 2019-2024. The following table shows the annual targets:-

Year	Target
2019-2020	20
2020-2021	20
2021-2022	20
2022-2023	20
2023-2024	20
TOTAL	100

The Council will build, purchase and liaise with Approved Housing Bodies and the Private Sector to meet the accommodation need of families whose preferred choice is standard social housing.

The Traveller Accommodation Programme 2019-2024 shall be reviewed no later than 31st December 2021. However, a review of this programme can be carried out at any time if considered necessary by WCC. Revised targets if necessary will be set for the following years based on the outcome of the review.

Section 1 – Introduction

The Housing (Traveller Accommodation) Act 1998 requires that each Local Authority prepare, adopt and implement a new Traveller Accommodation Programme (TAP) to meet the accommodation needs of the county's Traveller community within their functional area for the 5 year period from 1st July 2019 to 30th June 2024.

The existing programme (*Wexford Local Authorities Traveller Accommodation Programme 2014-2018*) which took effect on 1st January 2014 will continue to operate until 1st July 2019. Wexford County Council will, as part of the Traveller Accommodation Programme 2019-2024, assess the current and projected accommodation needs for traveller families in County Wexford over this period and to outline specific proposals to ensure that this need is met. The programme will have regard to all relevant legislation.

The Programme was prepared in accordance with the directions issued by the Minister for Housing and Urban Development in Circular 35/2018 and the guidelines for the preparation, adoption and implementation of TAP 2019-2024.

It sets out the actions that Wexford County Council will implement to meet the current and future accommodation needs of Traveller families throughout County Wexford. Wexford County Council is committed to ongoing consultation with Travellers through the Local Traveller Accommodation Consultative Committee (LTACC).

Section 2 – Policy Framework

The Traveller Accommodation Programme 2019-2024 has been prepared in accordance with the directions issued by the Minister for Housing and Urban Development in Circular 35/2018 and the guidelines for the preparation, adoption and implementation of TAP 2019-2024. Also the provisions set out in the Housing (Traveller Accommodation) Act, 1998 hereafter referred to as the 1998 Act. Wexford County Council is committed to the following as per Part II of the 1998 Act:-

- Assess the accommodation needs of Travellers (section 6)
- Prepare and adopt an accommodation programme by 30th September 2019 (section 7) for a 5 year period (2019-2024) and will provide for a range of accommodation to meet the identified needs (section 10)
- Section 16 deals with the steps necessary to implement the TAP 2019-2024
- The programme will be reviewed in each 3 year period or at such time as directed by the Minister (section 17). Wexford County Council shall review this programme no later than 31st December, 2021.
- WCC shall appoint a Local Traveller Accommodation Consultative Committee (LTACC) (section 21) to advise on the provision and management of Traveller accommodation.

Part III of the Act deals with miscellaneous provisions including:-

- Power of the Chief Executive Officer to act in an emergency (section 24)
- Instigation of a caravan or site loan scheme (section 25)
- Amending planning legislation to require local authorities to account for Traveller accommodation in the County Development Plan (section 26 and 27)
- Provisions on anti-social behaviours to halting sites (section 34)
- Stronger powers for local authorities to deal with unauthorised temporary dwellings (section 35)

2.1 Wexford County Development Plan 2013-2019

The TAP 2019-2024 and any subsequent reviews of same will have regard to the Housing Strategy contained within the Wexford County Development Plan 2013-2019 which is currently under review.

2.2 Wexford Local Economic and Community Plan (LECP)

One of the high level goals in the Wexford Local Economic and Community Plan (LECP) is to *“Support and promote the development of socially inclusive, sustainable communities in County Wexford and ensure that all citizens enjoy optimal health and well-being”*. A Traveller Interagency Group (TIG) has been set up.

2.2.1 Traveller Interagency Group (TIG)

Wexford Traveller Interagency Group is facilitated by the Community Development Section of Wexford County Council with the support of The Department of Justice, Equality and Law Reform. TIG members include representatives from the Traveller community and a wide variety of agencies, including; Ferns Diocesan Youth Service (FDYS), Tusla, An Garda Síochána, The Department of Social Protection, Wexford Local Development, Waterford and Wexford Education and Training Board, Wexford County Council and the HSE.

Wexford TIG adopted the 2018 Needs Analysis of the Traveller Community in County Wexford on the 16 November 2018. The analysis was carried out by social researcher, Mr Brian Harvey. The information captured in relation to the Traveller Community in County Wexford will be used for service planning and future development of the WTIG in order to secure better outcomes for Travellers and improve the use of resources allocated across Government Departments for Traveller specific measures.

Section 3 – Policy Statement

It is the policy of Wexford County Council to provide accommodation appropriate to the needs of Traveller households who are approved applicants for accommodation by WCC. These are included in the assessment of need in the preparation of this Programme. The overall aim of WCC is to enable every household to have available to them an affordable dwelling of good quality, and as far as possible at a tenure of their choice. WCC recognises Travellers' identity as a minority ethnic group and endeavours to provide accommodation suitable to their specific needs.

Housing options such as group and standard housing options as well as halting sites, temporary/emergency sites and one off rural houses are provided in recognition of Travellers' cultural identity as a minority group.

Wexford County Council is committed to addressing the accommodation needs of housing applicants throughout the County. Each of the 4 Municipal Districts (see map in Appendix 1) has a dedicated housing team comprising of a Social Worker, Housing Liaison Officer and an Area Housing Officer. WCC has a contract with Focus Ireland to provide a Tenancy Sustainment Service for individuals and families. This service is available to assist them accessing and maintaining either Private Rented, Local Authority accommodation or accommodation provided by the Approved Housing Bodies.

3.1 Anti-Social Behaviour

In the interests of good estate management Wexford County Council will have due regard to its Anti-Social Behaviour Strategy 2018-2024 which was adopted on 12th March 2018.

If a tenant is evicted from WCC accommodation due to anti-social behaviour they will be deemed to have rendered themselves homeless and may not be provided with another home by the Council. They will not be considered for another allocation for a probationary period of 3 years or until such time that WCC is satisfied that the evicted tenant is capable of living and agreeable to live in the community, without causing further anti-social behaviour.

3.2 Traveller Specific Accommodation

Recognising Travellers distinct culture and needs, WCC has provided Traveller specific accommodation consisting of Halting sites and Traveller group schemes. It is the policy and practice of WCC to provide Traveller specific accommodation in accordance with the assessment of need and subject to feasibility.

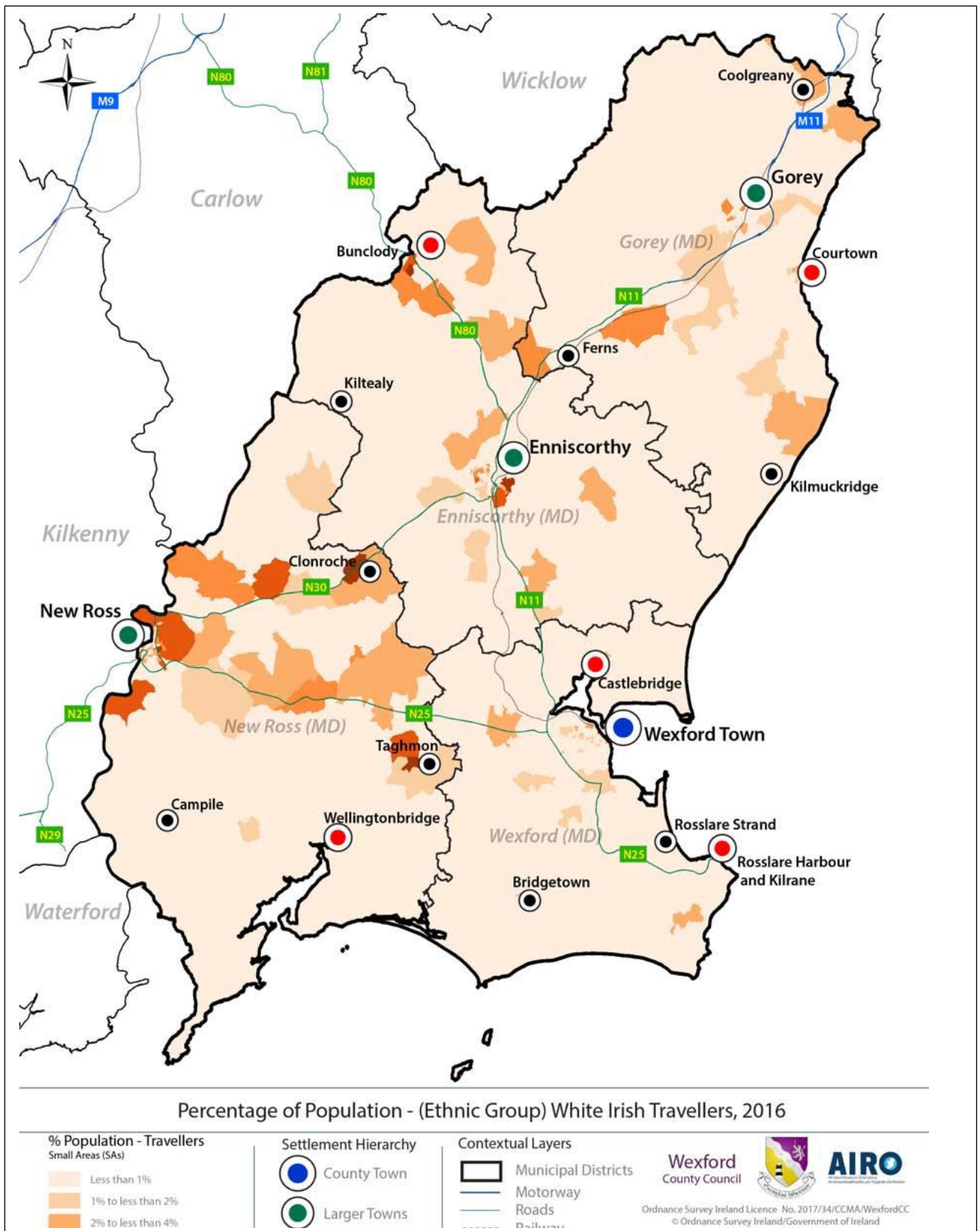
3.3 Unauthorised Encampments

The incidence of roadside or unauthorised encampments is relatively infrequent in Wexford. They present difficulties in relation to health and safety and can be hazardous to road users. WCC engage with unauthorised encampments on an individual basis.

Section 4 – Statistics

Wexford is the 12th most populated county in Ireland with a population of 149,722 recorded in Census 2016. This has increased by 3% since the Census in 2011. According to the 2016 Census, County Wexford has a higher than national and regional rate of Travellers. A total of 1,508 Travellers were recorded as living in the County which is an increase of 0.5% on the 2011 Census figure. The highest concentration live in the New Ross Municipal District in the areas of Clonroche, Taghmon, New Ross and surrounding areas. Map 4.1 on the next page shows the spatial pattern of Traveller population throughout the County.

4.1 Spatial pattern of Traveller population



Section 5 – Assessment of Need

An assessment of housing need was carried out as per Department of Housing, Planning and Local Government guidelines (DHPLG) by the Area Housing Officers in December 2018 and updated in February 2019 to establish the existing and projected accommodation needs of the Travelling Community in County Wexford. This process involved assessing each Traveller applicant who qualified for accommodation support in each Municipal District to determine the overall need. Ninety nine Traveller family applicants were identified through this process and the following table gives a breakdown of their accommodation requirements:-

Municipal District	No of Families	Accommodation Type	Special Needs
Wexford	29	Social Housing (25 families)	4 families require ground floor
		Traveller Group Housing (4 families)	
Gorey	19	Social Housing	1 family with Intellectual Disability
New Ross	25	Social Housing	3 families require ground floor
Enniscorthy	26	Social Housing	1 family require ground floor
TOTAL	99		

Families can only be included in the assessment of need and therefore considered for accommodation if the appropriate application forms are completed and submitted to WCC. Once submitted the AHO will assess them to determine the accommodation need in accordance with the statutory assessment regulations. Families will be supported in this process and the onus to complete and submit the appropriate forms is on the applicants themselves.

It should be noted that there are a number of families living in social housing tenancies where their current accommodation no longer meets their needs. They have applied for housing transfers to more suitable accommodation. These families will have their ongoing accommodation needs addressed as part of Wexford County Council's housing allocation and will be considered as part of the overall assessment of accommodation need.

5.1 Current Profile in Co Wexford

In December 2018 as part of the annual National Traveller Estimate a total of 744 families were identified in County Wexford. Six hundred and thirty eight are currently accommodated and 106 families are without accommodation. The table below shows the breakdown by Municipal District:-

Table 1 – Families with Accommodation

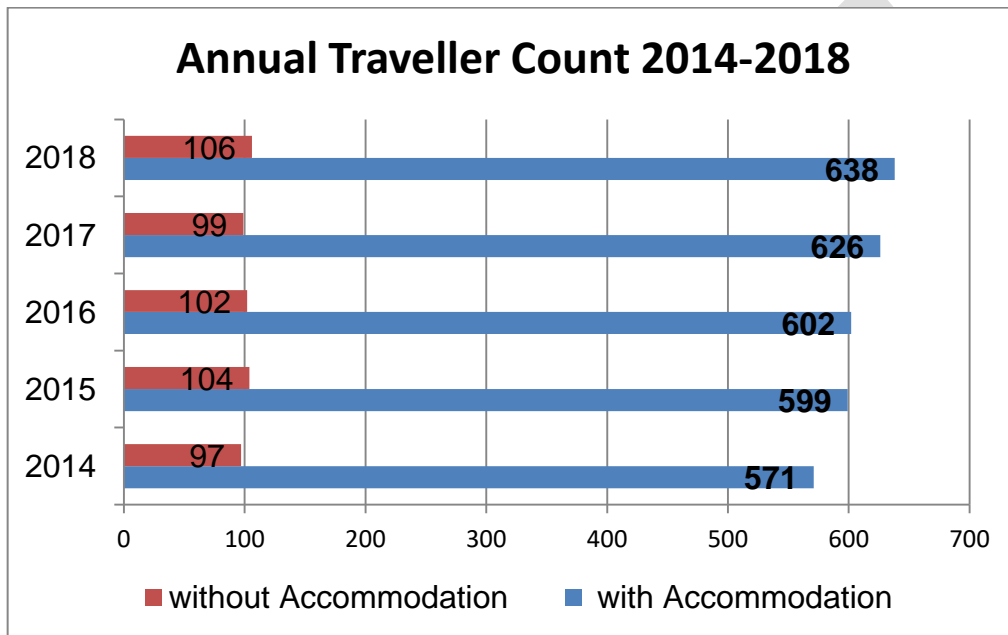
Type of Accommodation	Municipal District				Total 2018
	Enniscorthy	New Ross	Wexford	Gorey	
Standard Social Housing	37	64	46	25	172
Local Authority Group	30	13	2	0	45
Private LA Assist	16	9	4	2	31
Other Private Houses	79	91	27	24	221
Private Rented	43	21	34	31	129
Voluntary Housing	2	4	1	7	14
Official Halting Sites	6	5	0	0	14
Other	3	1	5	4	12
Total Families with Accommodation	216	208	119	93	638

Table 2 – Families without Accommodation

Type of Accommodation	Municipal District				Total 2018
	Enniscorthy	New Ross	Wexford	Gorey	
Sharing with relatives	15	11	9	17	52
Unauthorised Sites	14	17	12	11	54
Transient Sites	0	0	0	0	0
Roadside Caravans	0	0	0	0	0
No Fixed abode	0	0	0	0	0
Total Families without Accommodation	29	28	21	28	106

5.2 Analysis of Annual Traveller Count

The graph below shows the results of the annual traveller count from 2014-2018. From the estimated count of Traveller families it is noted that there is an increase of 2.62% from 2017 to 2018. A total 744 families were identified in 2018 as in residing in County Wexford and of the total 638 are categorised as with accommodation. Of the 106 families that are categorised as in need of accommodation, a total of 99 families are requesting accommodation from Wexford County Council.



Section 6 – Role of Wexford County Council

Wexford County Council has a responsibility for meeting the accommodation needs of the Travelling Community through the adoption and implementation of the Travelling Accommodation Programme 2019-2024. All housing applications will be considered in accordance with the Allocation Scheme and Scheme of Letting Priorities. Applications must be made by means of the standard social housing application form. Advice and assistance will be provided to applicants and/or their representative, if requested by the applicant, to address any difficulties that may arise in completing the application form.

6.1 Accommodation Types

The Council will promote a range of social housing options for Traveller families which are set out hereunder:-

- Standard Local Authority Housing
- Traveller Group Housing
- Halting Site
- Specially Adapted Housing
- Transient Sites
- Mobility Aids Housing Grant Scheme
- Housing Aid for Older People
- Housing Adaptation Grant for People with a Disability
- Long Term Leasing
- Voluntary or Co-Operative Housing
- Rental Accommodation Scheme (RAS)
- Housing Assistance Payment (HAP)

6.2 Consultation

The Housing (Traveller Accommodation) Act, 1998 requires that an extensive consultation process underpins the preparation and implementation of the Traveller Accommodation Programme. All Traveller Accommodation Programmes are required to be prepared in consultation with other adjoining local authorities, Health Service Executive, local Traveller organisation and groups, individual Travellers, the local LTACC and other relevant community groups and the public in general.

As part of the consultation process Wexford County Council wrote to the following stakeholders on 27th September 2018 giving notice of the intention to carry out the Assessment of Need and inviting submissions for the preparation of the draft TAP 2019-2024:-

Waterford City & County Council	Carlow County Council
Wicklow County Council	Local Traveller Accommodation Consultative Committee
Kilkenny County Council	Wexford Local Development
Tuath Housing	Co-operative Housing Movement in Ireland
Oaklee Housing	Focus Housing Association
Cluid Housing	Social Inclusion Office HSE
Irish Traveller Movement	Health Service Executive
Traveller Interagency Group	Respond Housing Association

Three submissions have been received from the consultation process from the following organisations the details are listed in Appendix 3:-

- Irish Traveller Movement
- Minceirs Whiden (Cant for “Travellers talking”) Ireland
- Ms Caroline Kavanagh, HSE Mental Health Social Worker

6.2.1 Local Traveller Accommodation Consultative Committee (LTACC)

The Wexford LTACC has 10 members which includes elected members and traveller representatives. The committee gives advice on the provision and management of accommodation for Travellers under Section 21 of the Traveller Accommodation Act 1998. Membership of the LTACC provides for 5 Traveller positions, Traveller Development Groups, Elected Members of the Council and Council staff. The aim of the LTACC is to meet on a quarterly basis. The Committee and is chaired by the Chairman of Wexford County Council. The current LTACC will automatically disband in May 2019 and in June 2019 a new committee will be appointed by the new elected members of WCC and reappointment from the Traveller forum.

6.3 Housing Teams

Each Municipal District area in County Wexford has a dedicated housing team consisting of an Area Housing Officer, Housing Liaison Officer and Social Worker. This team assists in the development of housing strategies, including homelessness, disability and anti-social

behaviour, housing advice and allocation services within County Wexford. They work in partnership with other agencies to secure the best housing outcomes for people at risk of or experiencing homelessness.

6.3.1 Area Housing Officer (AHO)

The Area Housing Officers assess clients for Social Housing Supports in County Wexford. They nominate clients for vacancies in their areas of choice. They create and maintain files and records of service users, ensuring that information is recorded in iHouse in a timely and accurate manner. They service a weekly housing clinic whereby clients can make appointments to see the AHO who can provide information and assistance to them on a range of housing issues. The AHO also works with Residents Associations within WCC estates. They also undertake residential housing inspections. In conjunction with the Social Workers they allocate emergency accommodation as appropriate.

6.3.2 Housing Liaison Officer (HLO)

The Housing Liaison Officers carry out pre-tenancy meetings for all new tenants. They establish contact and liaise with all tenants of WCC throughout the county. They foster good working relationships between local communities and WCC. They liaise with other Agencies to prevent anti-social behaviour and promote good estate management. They work closely with the Social Workers and Area Housing Officers in each Municipal District. They also undertake residential housing inspections on both WCC housing and on private rented houses. They record and investigate complaints including breaches of tenancies and anti-social behaviour. They serve warning letters and statutory notices when required. They attend court to give evidence.

6.3.3 Social Worker

Local Authority Social Workers uphold the principles of CORU's Code of Professional Conduct and Ethics for Social Workers and provide a professional social work service to Housing Department service users. This service ranges from providing housing advice and information to the provision of targeted social work intervention and support. They also carry out assessments with a view to making recommendations to the Housing Department that facilitates the matching of resources to the needs of service users, identifying and addressing service users' needs and supporting social inclusion and community development.

The Social Worker also engages in both case and project based inter-agency work, providing a link between local authorities and external agencies. They also participate in the development of policies. Some other issues that a Social Worker can assist with include mental health issues, domestic violence, child protection and financial issues.

6.3.4 Pre-tenancy meetings

The Housing Liaison Officers conduct pre-tenancy meetings prior to the allocation of all types of accommodation units. These courses are very informative and assist in the prevention of anti-social behaviour and breaches of tenancy agreements. The course examines the Tenancy Agreement and explains the consequences of breaching the terms of the same. The obligations of tenants (e.g. payment of weekly rent, maintenance of dwellings etc) are outlined.

6.3.5 Tenant Participation and Estate Management

Wexford County Council encourages tenant participation in the management and maintenance of Traveller accommodation in halting sites, social housing or in private rented properties. The Area Housing Officers meet various residents associations on site and provide funding for equipment for the upkeep of estates.

6.3.6 Emergency Accommodation

In the event of an emergency or family crisis Wexford County Council may provide appropriate emergency accommodation on a short term basis to meet the needs of the individual or family concerned. In addition, WCC offer a HAP Place Finder service which will support homeless persons in Wexford to find a private rented tenancy using HAP.

6.4 Maintenance

Wexford County Council has a responsibility for the management and maintenance of all types of Local Authority accommodation units in partnership with the tenants to achieve an excellent two-way working relationship. The aim of WCC is to supply these services effectively. Tenant and maintenance handbooks are issued to all tenants which outlines what services are offered, how to access them and the tenants role. They aim to provide the tenant with a user friendly manual on what services are offered by the Housing Department and how the tenant can access them.

6.5 Fire Safety

It is the policy of Wexford County Council to maintain appropriate fire safety standards at all Local Authority housing units which includes Traveller specific accommodation. It is recognised that fire safety is a shared responsibility of both WCC and its tenants. Wexford County Council will continue with the following programmes initiated in 2016:-

- Ensure all accommodation units are fitted with working smoke alarms
- Ensure accommodation on halting sites are maintained to a standard to prevent fire spread between units
- Ensure fire hazards on halting sites are monitored and reduced to a minimum
- Ensure pre-incident planning visits are carried out for required sites by the fire service
- Continue with a process of engagement with the Traveller community through the various groups to promote improved awareness on fire safety issues
- Continue with the guidance as set out in the recommendations contained in the National Directorate Fire and Emergency Management – “Report on Review of Fire Safety in Local Authority Provided Traveller Accommodation” published September 2016.

6.5.1 Fire Safety output

Housing Maintenance Section fitted fire blankets, smoke alarms and CO2 alarms to all mobiles and annexes. The Party walls were also increased as per the guidelines. A full inspection with a representative from the fire service was also carried out to identify any issues arising.

Section 7 – Evaluation of TAP 2014-2018

7.1 Targets 2014-2018

The table below shows the annual targets set for the 5-year term of the Traveller Accommodation Programme 2014-2018. An official review of TAP 2014-2018 was carried out in 2016 and it was noted that the number of Traveller families requiring accommodation had fallen by 18.75% from the 128 identified in 2014. As a result the annual targets were revised to reflect the decrease. This new revised target was agreed at an LTACC meeting on 13th December 2016.

Year	Target	Revised Target following mid-term review
2014	24	24
2015	26	26
2016	26	18
2017	26	18
2018	26	18
TOTAL	128	104

7.2 Progress Achieved - TAP 2014-2018

Wexford County Council has assisted Traveller families find suitable accommodation over the years. WCC has endeavoured to meet the targets set out in the Traveller Accommodation Programme 2014-2018, the table below shows the accommodation units offered over the lifetime of the programme. WCC exceeded the targets set out in the TAP 2014-2018 with 113 offers of accommodation made to Traveller families. It is worth noting that not all offers of accommodation were accepted for various reasons.

Year	Target	Accommodation Offers made
2014	24	26
2015	26	24
2016	18	17
2017	18	19
2018	18	27
TOTAL	104	113

7.3 Housing Output

As part of the House Acquisitions Programme nine houses were purchased throughout the County specifically for traveller families at an approx. cost of €1.5m. Under the TAP Construction Programme two traveller specific houses were constructed in Castlemoyle, New Ross at a cost of €290,980. A total of €332,000 was spent on refurbishment and upgrade works at Marshmeadows and Bunclody Halting Sites and Marconi Park, Enniscorthy. Major radon remediation works were carried out to a Traveller specific unit at a cost of €75,000.



Section 8 – Traveller Accommodation Programme 2019-2024

Wexford County Council will endeavour to meet the accommodation needs of Travellers who are approved housing applicants within the 5-year period of the Traveller Accommodation Programme 2019-2024.

The 4 dedicated Housing teams active in each of the existing Municipal District Areas are complimented by a Homeless HAP Place Finder worker to assist in sourcing private rented accommodation. Together they provide an integrated approach to addressing the accommodation needs of the Travelling Community. While the targets reflect the preferred options, WCC will work with applicants to explore all options of meeting their accommodation needs either in a temporary or permanent basis.

8.1 Analysis of Assessment of Need

An assessment of the accommodation need was carried out in December 2018 and updated in February 2019. This statutory assessment of need assessed all applicants seeking assistance with accommodation. The number of approved Traveller family seeking accommodation is 99 the following table shows the breakdown of their preferred accommodation type:-

Municipal District	No of families	Social Housing				Traveller Group Housing
		1 bed	2 bed	3 bed	4 bed	
Wexford	29	13	5	6	1	4
Gorey	19	2	4	9	4	0
New Ross	25	3	5	13	4	0
Enniscorthy	26	1	7	16	2	0
TOTAL	99	19	21	44	11	4

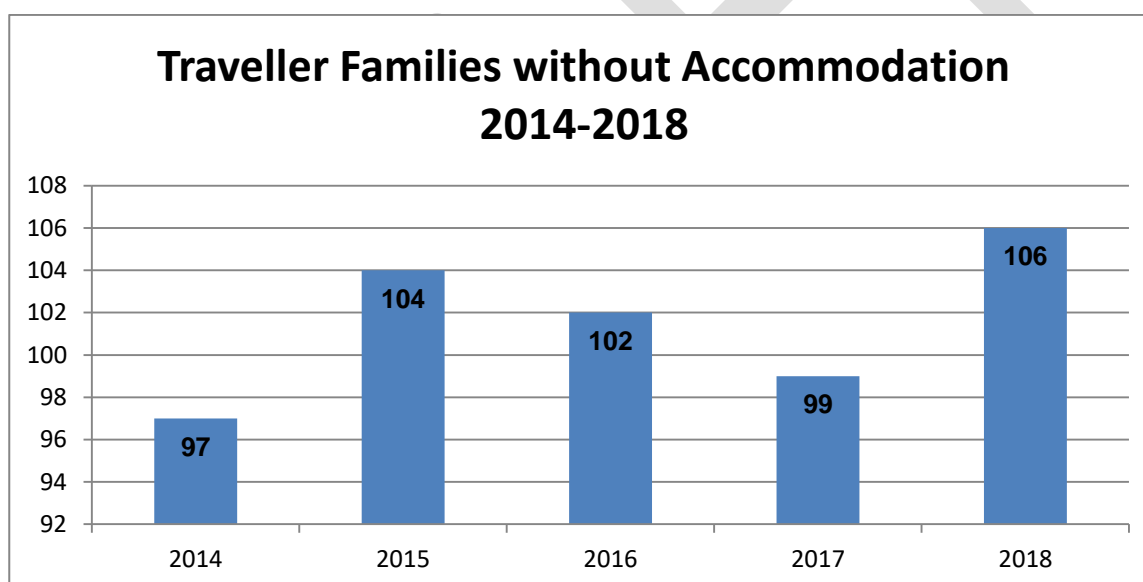
Whilst Traveller specific accommodation will be provided where possible, the main source of accommodation units over the lifetime of this programme will be standard social housing in its current context, which includes RAS, Leased Accommodation, Approved Housing Bodies and also supported Private Rented Accommodation.

The assessment of need identified that 8 families require ground floor accommodation and 1 family was identified with special needs.

It should be noted that there are a number of families living in social housing tenancies where their current accommodation no longer meets their needs. They have applied for housing transfers to more suitable accommodation. These families will have their ongoing needs addressed as part of WCC housing allocation and will not be considered as part of the overall accommodation need as it will not result in a need for additional units of accommodation.

8.2 Projected Accommodation Needs 2019-2024

In addition to the analysis of assessment of need, consideration has also been given to the projected need for accommodation during the period of this programme 2019-2024. The 2016 Census indicated an increase of 0.5% on the 2011 Census figure. The annual traveller count does not show a considerable increase in the numbers without accommodation:-



The assessment of need identified 99 families and with a projected growth within the next 5 years of 0.5% (based on Census data) then WCC will need to provide **100** accommodation units within the lifetime of the Traveller Accommodation Programme 2019-2024 most will be general social housing as per the assessment of needs.

8.3 Annual Targets

In order for Wexford County Council to meet the projected accommodation need during the lifetime of this programme, it is considered that the best option is to spread the targets evenly over the 5 year period. The Council will build, purchase and liaise with Approved Housing Bodies and the Private Sector to meet the accommodation need of families whose preferred choice is standard social housing. The projected need is 100 units:-

Year	Target
2019-2020	20
2020-2021	20
2021-2022	20
2022-2023	20
2023-2024	20
TOTAL	100

As part of the assessment of need it was noted that only 4 families expressed an interest in Traveller Group Housing in the Wexford Municipal District Area.

8.4 Implementation Strategy

The assessment of need and project growth indicates a need to provide 100 units of accommodation during the lifetime of this programme. While the targets reflect the preferred options, WCC will work with applicants to explore all housing options with a view to meeting their housing need. The Council will avail of the full range of housing options through the following methods:-

8.4.1 Private Rented

The Long Term Leasing Scheme, Rental Accommodation Scheme (RAS) and the Housing Assistance Payment (HAP), will be utilised as a means of addressing long term housing needs. It is acknowledged that there are issues arising in relation to the availability of private rented accommodation. The Homeless HAP Place Finder will assist Traveller families with the threat of becoming homeless in sourcing suitable private rented accommodation.

8.4.2 Standard Social Housing

Standard Local Authority accommodation remains the preferred accommodation option for households in Wexford. It is envisaged that the need will be met through the housing construction programme. As casual vacancies become available WCC will strive to accommodate families according to need.

8.4.3 Traveller Group Housing

Four families expressed an interest in Traveller Group Housing in the Wexford Municipal District Area during the assessment of need. At present Wexford County Council has 7 group housing schemes throughout the county in the following locations:-

Location	No of units	Location	No of units
Drumgoold, Enniscorthy	14	Na Coillte, Bunclody	7
Clonleigh, New Ross	2	Palace East, New Ross	2
Marconi Park, Enniscorthy	8	An Caislean Mhaol, New Ross	2
An Cluain Huigheid	4		

In the vast majority of these schemes no negative issues have arisen. However the scheme at Marconi Park, Enniscorthy continues to present challenges for Wexford County Council as well as the local community.

The establishment of a group housing scheme in the Wexford Municipal District area will be delivered as part of this Traveller Accommodation Programme to meet the need of the four families identified as part of the assessment of need.

8.4.4 Approved Housing Bodies (AHB)

Funding has been approved by the Department of Housing, Planning and Local Government for Approved Housing Bodies for 231 units for County Wexford for 2019 and 2020. However, proposals have been received from AHB's for another circa 100 housing units for Q3 / Q4 of 2020 and 2021. Wexford County Council has full nomination rights to these units for social housing applicants.

8.5 Review of TAP 2019-2024

Wexford County Council shall review the Traveller Accommodation Programme 2019-2024 no later than 31st December 2021. However, a review of this programme can be carried out at any time if considered necessary by WCC. Revised targets if necessary will be set for the following years based on the outcome of the review.

8.6 Funding

The capital provision for Traveller specific accommodation identified in TAP 2019-2024 will be sourced from the Department of Housing, Planning and Local Government (DHPLG) under the Annual Capital Funding Allocation for Traveller Specific Accommodation. Wexford County Council will submit proposals to:-

- Progress Traveller Accommodation projects already approved
- Submit further details of Traveller Accommodation projects approved in principle
- Submit new projects for Traveller Accommodation for consideration as they arise

Housing acquisitions will be submitted to the DEPLG under the Social Housing Capital Investment Programme (SHCIP) and the Capital Assistance Scheme (CAS) as with all social housing acquisitions.

Section 9 - Conclusion

The estimated number of accommodation units required to meet the needs of the Traveller Community within the lifetime of this Traveller Accommodation Programme 2019-2024 is 100 housing units. This programme outlines the existing and projected need for Traveller Accommodation and how Wexford County Council will meet this need. It outlines the policies in relation to Traveller Accommodation, strategy for implementation and targets.

Wexford County Council is committed to working with Travellers, Traveller Representative, Local Communities and other agencies to deliver the programme and provide quality accommodation for members of the Travelling community through LTACC. The implementation of this programme requires a commitment from all involved to work together. The proposals contained in the programme are also subject to the necessary funding being available.

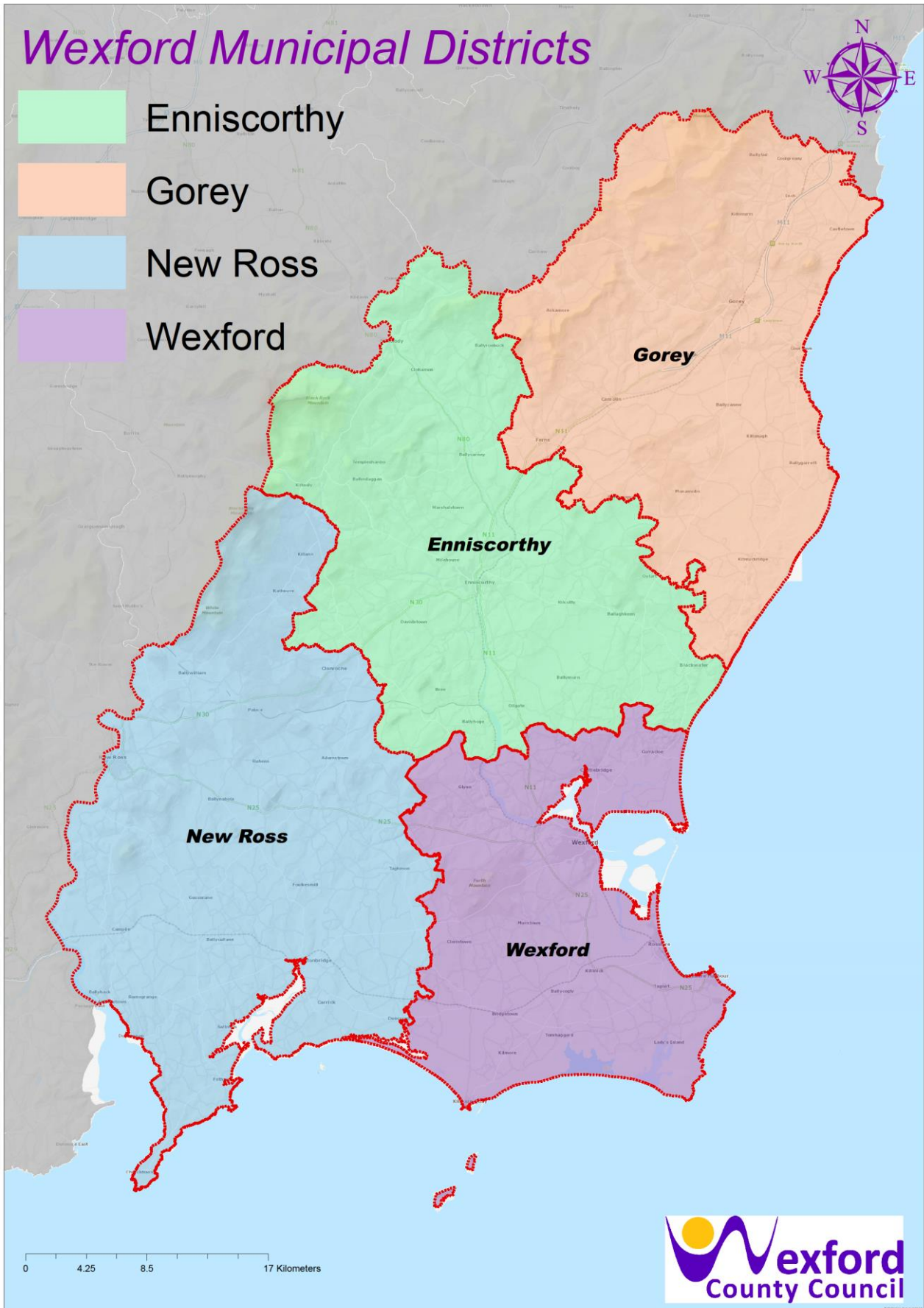
9.1 New Municipal Districts

There will be an increase in the number of Municipal Districts in County Wexford following the local elections in May 2019 as per Statutory Instrument (SI) 637 of 2018 from the existing four to five see map in Appendix 2. The new districts will be:-

Municipal District of Enniscorthy	Municipal District of Gorey
Municipal District of New Ross	Municipal District of Rosslare
Borough District of Wexford	

It is worth noting that the above changes will have no impact on the delivery of the Traveller Accommodation Programme 2019-2024.




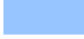


Appendix 1 – Map of Municipal Districts

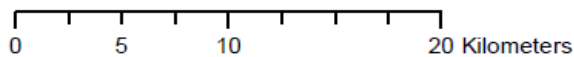
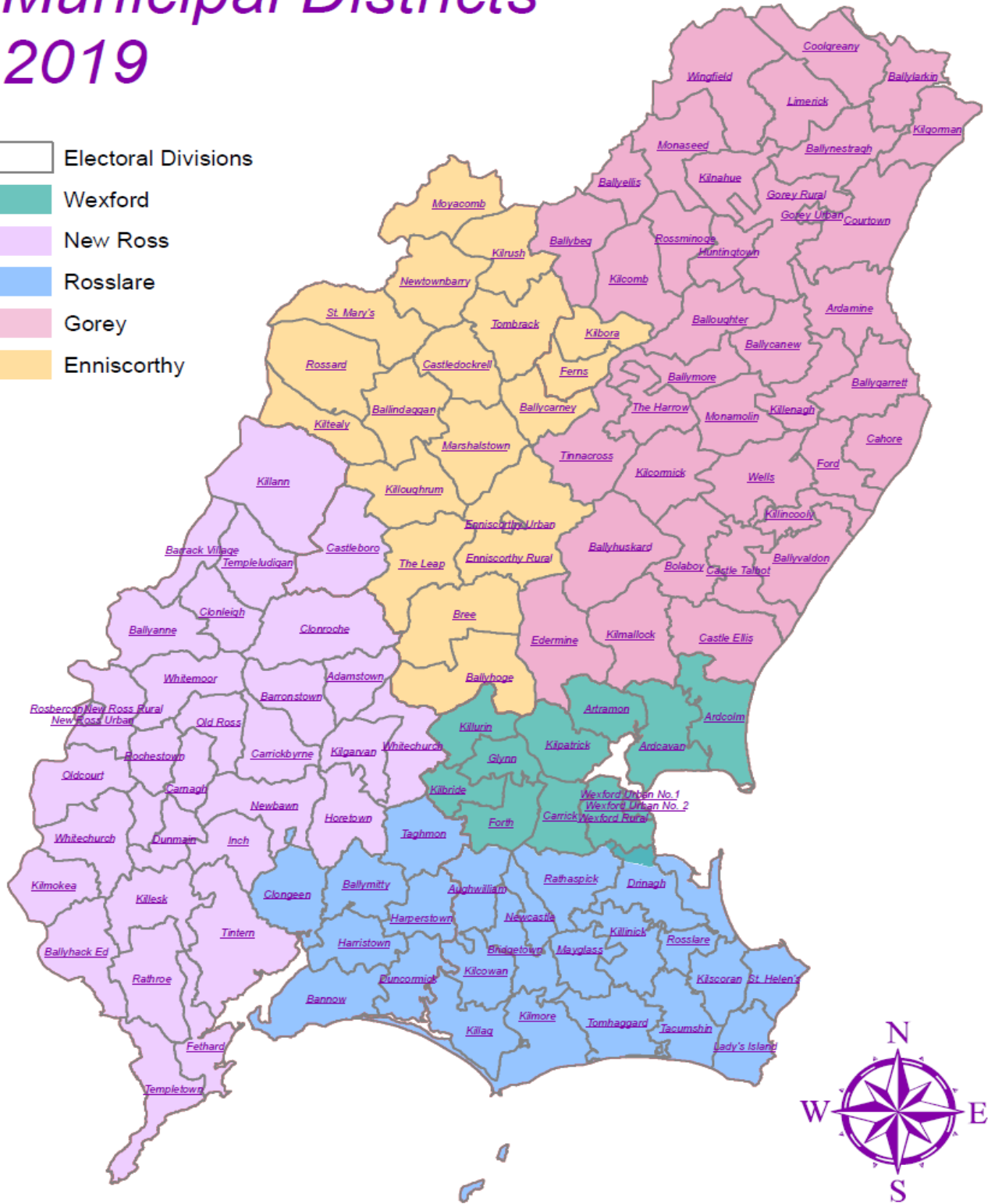


Appendix 2 – Map of New Municipal Districts



Municipal Districts 2019

-  Electoral Divisions
-  Wexford
-  New Ross
-  Rosslare
-  Gorey
-  Enniscorthy



Appendix 3 – Submissions

Submission No 1

From the Irish Traveller Movement (ITM)

Main Issues	Official Response
<p>(a) The Statement of Strategy should be bound by SMART principles (Specific, Measurable, Achievable, Relevant and Time bound).</p> <p>(b) The Assessment of Needs should involve local traveller organisations.</p> <p>(c) Allocation of Accommodation –</p> <ul style="list-style-type: none"> • open and transparent scheme of letting priorities • LA's must not operate a separate waiting list for Travellers. • Question the legality of quota clauses • Compatibility with existing tenants to be considered. • Management issues with existing traveller specific accommodation should not be a reason to delay or postpone the development of new accommodation. <p>(d) Provision of accommodation for Nomadism families</p> <ul style="list-style-type: none"> • Repeal of Section 24 of the Housing (Miscellaneous Provisions) Act 2002 prohibiting nomadism • Provision of a network of transient halting sites. • Transfer arrangements between Traveller families • Greater supports and assistance for families negotiating their own accommodation on private lands/sites • Identification of public land for temporary camping purposes 	<p>TAP to follow SMART principles wherever feasible</p> <p>Any referrals from Traveller reps or organisations may be taken on board</p> <p>All allocation of accommodation shall be in accordance with the Social Housing Regulations 2011</p> <p>WCC waiting list is all inclusive</p> <p>WCC does not operate a quota clause.</p> <p>Compatibility is taken into consideration.</p> <p>Noted</p> <p>Repeal of Legislation is a matter for Members of the Oireachtas.</p> <p>Such provision would need regional strategy and involvement of all Local Authorities in the Region.</p> <p>Mutual Transfers to be considered in accordance with scheme of letting priorities.</p> <p>Such supports to be considered where appropriate.</p> <p>Noted</p>

Main Issues	Official Response
<p>(e) Crisis Accommodation –</p> <ul style="list-style-type: none"> • Provision of Traveller specific emergency accommodation hubs • Additional facilities for Traveller families sharing in overcrowded accommodation be brought up to standard • Refurbishment programme to include ‘out of use’ accommodation. • Reinstate the Caravan Loan Scheme. • To provide emergency accommodation to families living on the roadside 	<p>All provision of Emergency accommodation to be considered in line with WCC Homeless Strategy.</p> <p>Any such facilities to be provided in line with Assessment of Need.</p> <p>Any units of ‘out of use’ accommodation to be considered on individual merits.</p> <p>To be considered in conjunction with demand from Assessment of need.</p> <p>Noted.</p>
<p>(f) Promotion of Tenant Participation</p>	<p>Included in T A P see section 6.3.5</p>
<p>(g) Improve fire safety at Traveller specific accommodation</p>	<p>WCC has ongoing fire safety programme (see section 6.5)</p>
<p>(h) Provide costings for the full implementation of TAP 2019-2024 including budgets for maintenance and capital projects</p>	<p>See section 8.6 on Funding</p>

Submission No 2

from Minceirs Whiden (Cant for Travellers talking) Ireland

Main Issues	Official Response
(a) Adequate provision of accessible, suitable and culturally appropriate accommodation available for Travellers	Accommodation will be provided as per the assessment of needs
(b) Robust monitoring and evaluation framework for the delivery of TAP	TAP will be reviewed when necessary
(c) Budget allocation is appropriate and fully used	All funding will be utilised
(d) Submit annual progress reports to the Department	Progress reports will be provided when requested
(e) Provide explanation of any underspend of budget	n/a
(f) Chief Executive Officers (CEO) to participate at Traveller Accommodation committees	The CEO nominates a Senior Officer to LTACC
(g) CEO to present annual TAPS reports to joint committee on Housing, Planning and Local Government	Reports to be presented when the need arises.
(h) Implement recommendations made in the 1998 Traveller Accommodation Act	TAP has been prepared in accordance with the 1998 act
(i) Support Travellers through the Caravan Loan / Rental Scheme	To be considered in conjunction with demand from Assessment of need.
(j) Increase budget for Caravan Loans / Rental Scheme	Noted
(k) Provide loans for Travellers to purchase a home from unspent budget	See section 8.6 on Funding
(l) Have active Traveller participation and representation on LTACC	Travellers are well represented on LTACC with 3 members
(m) Ensure Memorandums of Understanding are in place for LTACC	Noted

Submission No 3

From Caroline Kavanagh, HSE Mental Health Social Worker

This submission refers to a specific applicant and is receiving ongoing consideration.

DRAFT

Appendix 4 – Committees

The following is the current list of membership of the Local Traveller Accommodation Consultative Committee (LTACC):-

Ms Bidy Connors	Ms Maggie Connors
Ms Nan Moorehouse	Ms Margaret Wall
Ms Mary Helen Wall	Cllr Keith Doyle
Cllr Paddy Kavanagh	Cllr Larry O'Brien
Cllr Joe Sullivan	Cllr Robert Ireton
Cllr Tony Walsh	Mr Padraig O'Gorman, SEO
Mr John Carley, DOS	Ms Anmarie Doyle, Social Worker
Mr Ray Colfer, HLO	

Membership of Wexford TAP project team:-

- Mr Padraig O'Gorman, Senior Executive Officer
- Ms Caroline Creane, Senior Staff Officer
- Mr Ray Colfer, Housing Liaison Officer