



## iMAPs Public Mapviewer 2017 Quick Reference Guide

[Click Here to access iMAPs](#)



*This quick reference guide has been created to allow users of the iMaps system a point of reference to fully utilise the capabilities of the system. The new iMAPs can be used on any mobile devices such as tablets and phones.*

*The guide will look at some of the main functionality available. While it is hoped that the users fully utilise all functionality within iMAPs, this guide will concentrate on the main widgets, with detailed examination of the widgets we feel will be used more often by members of the public. Other widgets will be explained in less detail.*

*It is envisaged that users of the previous version of iMAPs will find the move to this version seamless and it is hoped that the data layers provided will provide useful spatial information to the public.*

## Contents

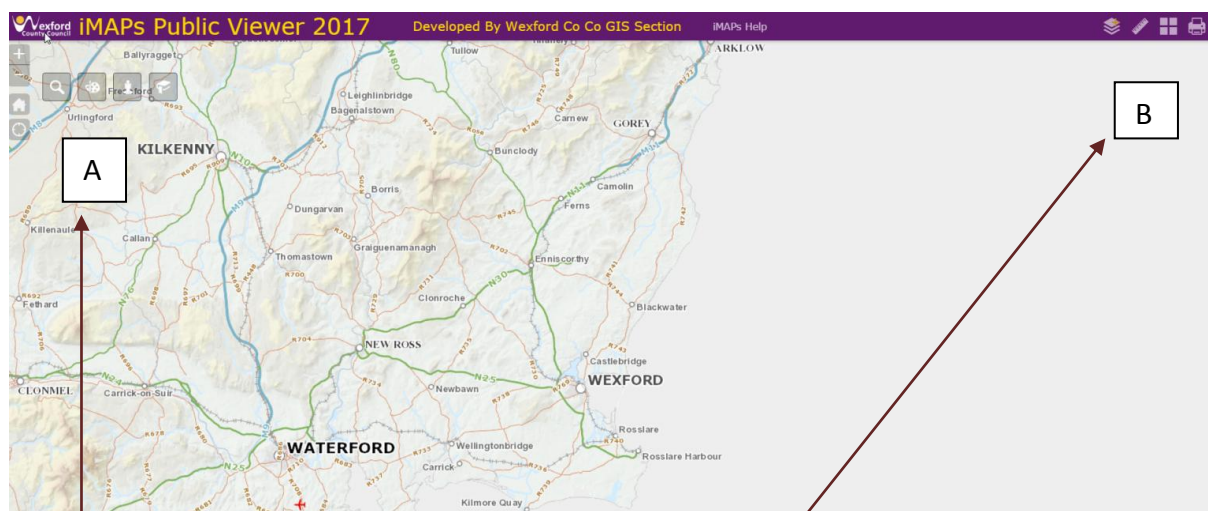
1. Introduction .....	2
2. Layer List .....	3
3. Searching iMAPs for Relevant Information .....	5
Example 1 – Search by Planning Reference .....	5
Example 2 – Search by Eircode or Address.....	6
4. Streetview. ....	7
5. Other Widgets.....	8
5.1 Draw Widget .....	8
5.2 Bookmark Widget .....	8
5.3 Measure Widget .....	9
5.4 Basemap Gallery .....	9
5.5 Print Widget .....	10
6. Conclusion.....	11
Appendix I .....	12

## 1. Introduction

The guide will cover the topics listed below.

- Layer List (provides access to data layers contained in iMAPs)
- Searching iMAPs for relevant information
- Using Streetview
- Other Widgets

Firstly, the user guide will introduce the general layout of the new iMAPs system and how it is presented on your screens. The guide will explain the tools that will enable you to find relevant information. These tools are called widgets and are located in two main areas of the screen as shown below -



(A) Widgets in top left hand corner

- Search
- Draw
- Streetview
- Bookmark

(B) Widgets in top right hand corner

- Layer List
- Measure
- Basemaps
- Prints

This guide will focus on the main widgets - Layer List, Search and Streetview in detail and briefly touch on the other widgets in the last section.

## 2. Layer List

The layer list is the name given to the tool that we use to select the data layers you want to view. It will automatically display on the right hand side when you open iMAPs and shows the categories of maps in the system. Within each main categories are a number of different layers



This icon is used to turn on and off the layer list.

The main map categories are listed in Figure 1 below. Each category contains a series of maps – a full list of the maps is available in Appendix 1.

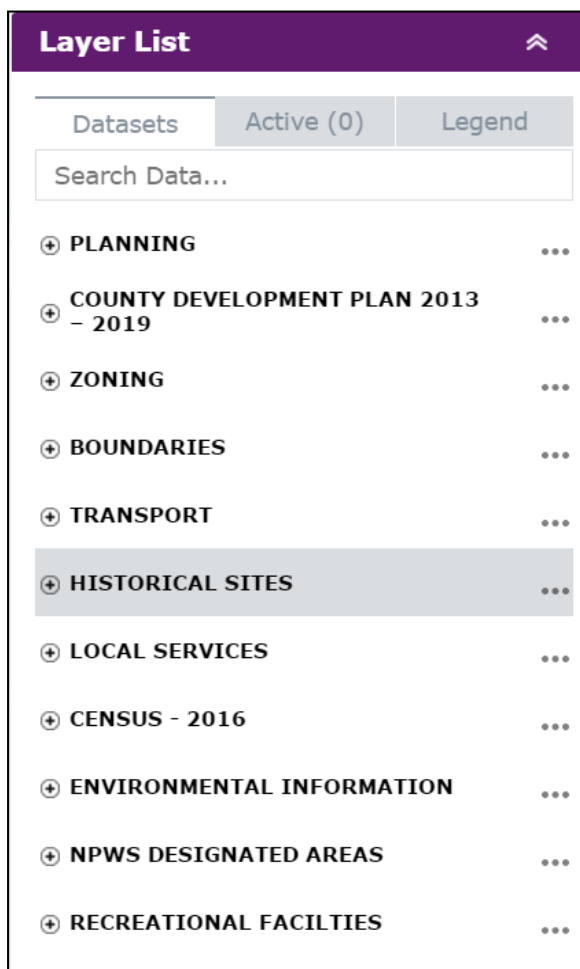


Figure 1 - Map Categories

### Using the layer list

- Click on the category that you want to view which will display the layers in this category i.e. Click on Planning
- Tick the checkbox for the layer you want to view – this will turn on/off the layer i.e. Click on the checkbox for Planning applications

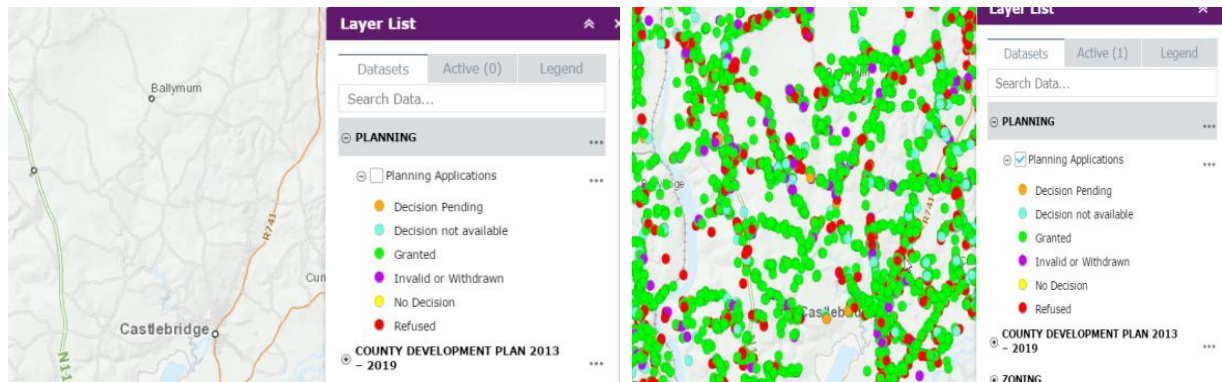
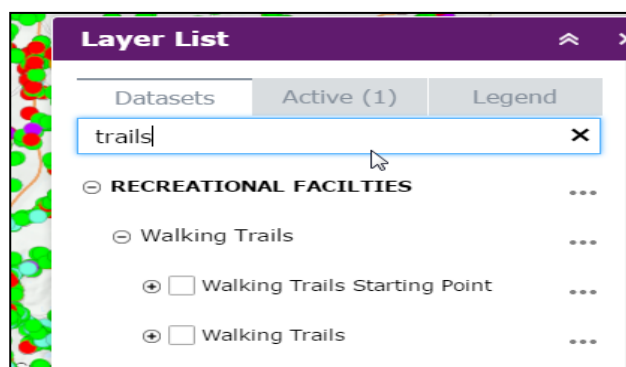
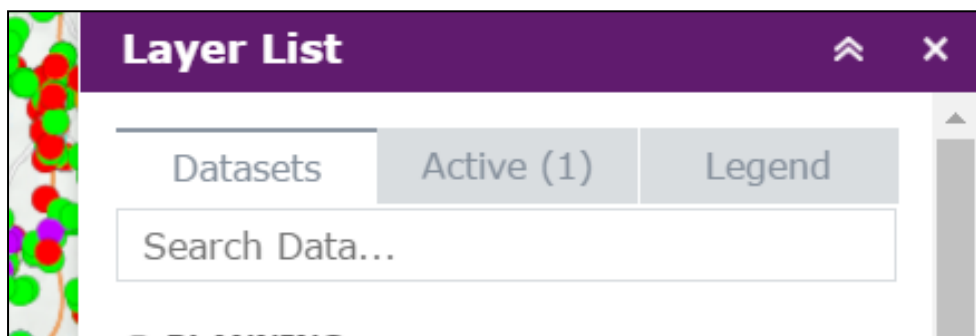


Figure 2 - Turning on/off Planning application layer

The layer list has an additional two tabs -

- 1) active which shows the layers that are currently being displayed on the map
- 2) legend which gives a visual of the symbology of the displayed layers



In addition, the layer list also allows you to search for a specific map layer.

For example, if you want to search for Trails, type it into the search box - the trails layers will automatically show in the layer list. Click in the check box to turn it on.

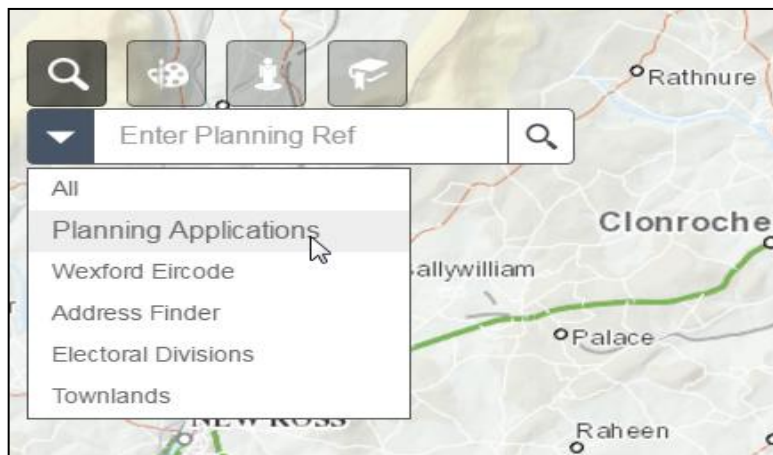
### 3. Searching iMAPs for Relevant Information

The search icon is shown in the top left hand corner of iMAPs. The search tool allows iMAPs users to search certain layers i.e. search the planning applications layer for a specific planning application number.

We currently have five searchable layers that may be useful -

- Search by Planning Application
- Search by Eircode or Address (Helps find your Eircode)
- Search by Electoral Division
- Search by Townland.

#### Example 1 – Search by Planning Reference

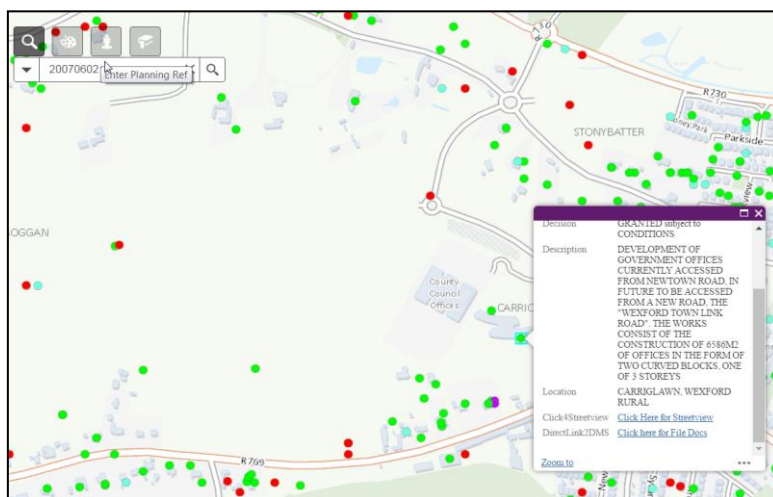


#### Step 1

Select Planning Applications from the drop down menu

#### Step 2

Enter the planning reference number



In this example -

Select Planning applications from the dropdown list  
Enter 20070602 as the planning number

The system will zoom to the location of the planning application on the map.

A pop up window showing information about the application will be displayed.

Note that there are two links available in the pop up window –

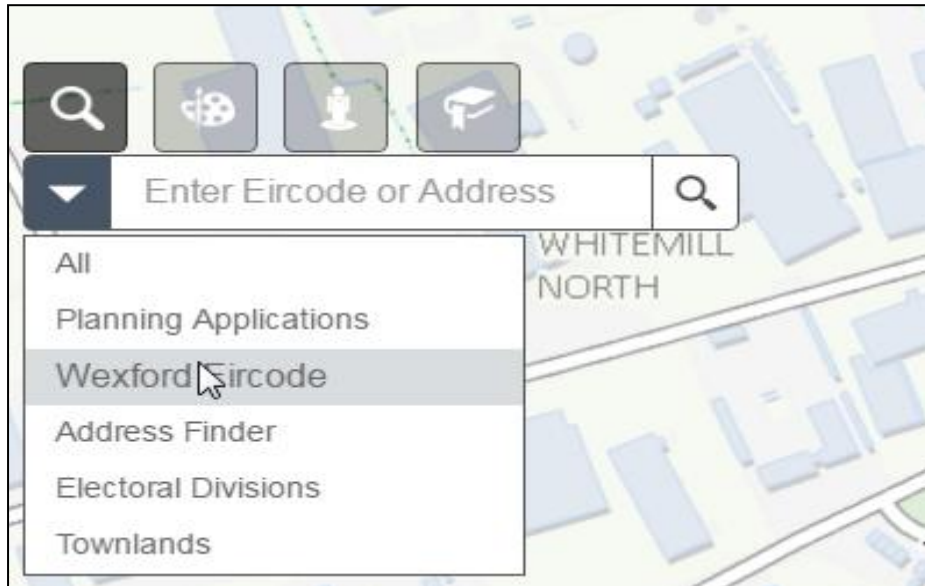
- 1) Click here for streetview will open Google street view
- 2) Click here for file docs will open a new window with the documents for that planning application. Note that planning application documents are only available for planning applications made from January 2000. Older documents must be requested from the Planning department.



## Example 2 – Search by Eircode or Address.

With this search, you can

- Search for an address
- Search for an Eircode



Step 1 Select Wexford Eircode from the drop down menu.

Step 2 - Enter the address or part of the address

For example

- Enter Carricklawn in the search field and click on search
- A list of addresses with Carricklawn in the address is displayed
- Click on the address you require and the map will zoom to that address

Note that you can also enter the Eircode and click on search. The map will then zoom to that Eircode.

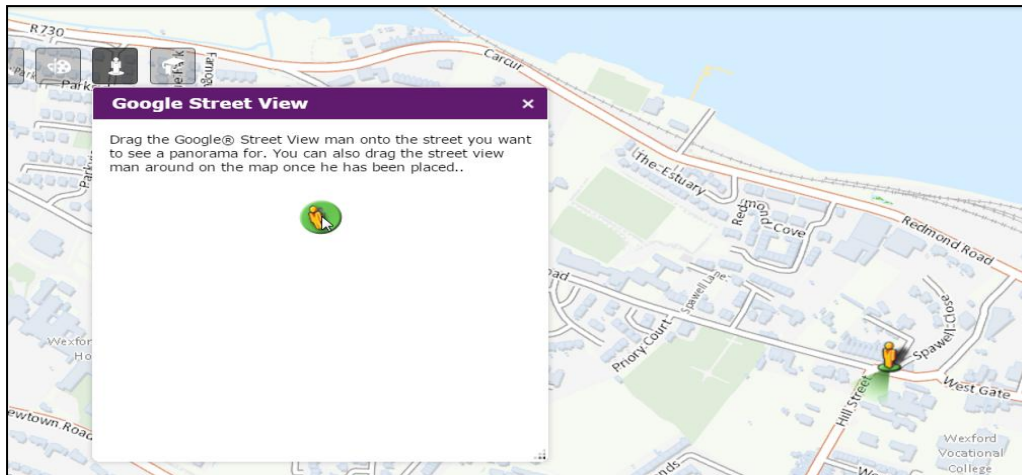
**Note - The other searches within the system are based on the same principles as discussed above**



#### 4. Streetview.

The street view widget is also available in iMAPs.

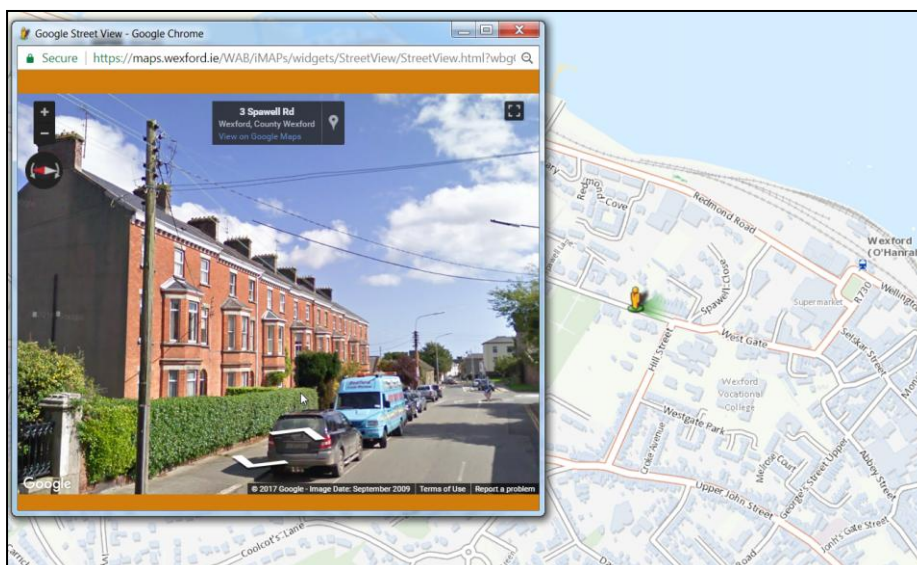
This widget provides a panoramic street view of a particular area providing that the area is in close proximity to a roadway that was photographed by Google.



**Step 1** - Select the streetview widget that is shown in the top left hand corner

**Step 2** - Select the orange man from the street view widget and drop the man on to the location on the map that you wish to view. (Note it's important to make sure that the man is located on a public street or road).

**Step 3** - The popup will show the street view of the location selected. (Note it may be necessary to allow pop ups within your chosen internet browser to allow the streetview to work)

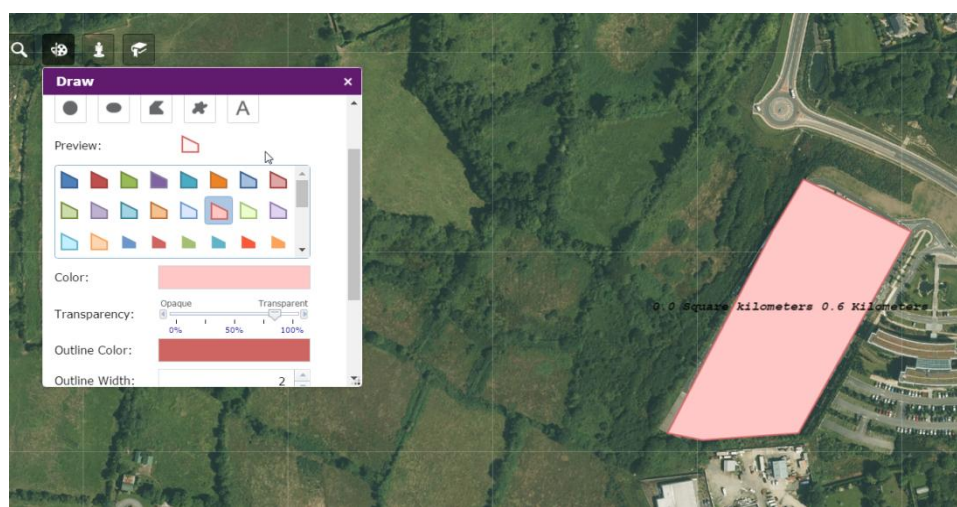


## 5. Other Widgets

In addition to the widgets discussed above, the new iMAPs system has a number of other widgets that may be of use.

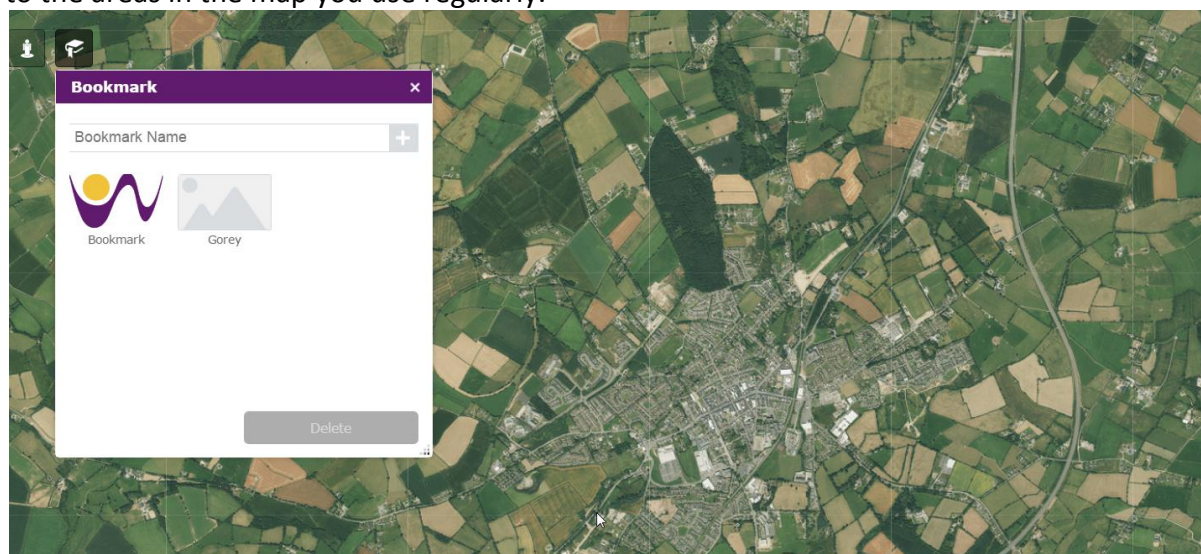
### 5.1 Draw Widget

The draw widget allows you to draw temporary images and lines during their mapping session. The image below shows the draw tool in operation, a polygon has been drawn over County Council Building and surrounding site. This is shown by the pink area. This widget can be used for a number of operations, for example calculating area size or path length. The draw widget works well with the print tool as you have the ability to draw and print maps to a high standard.



### 5.2 Bookmark Widget

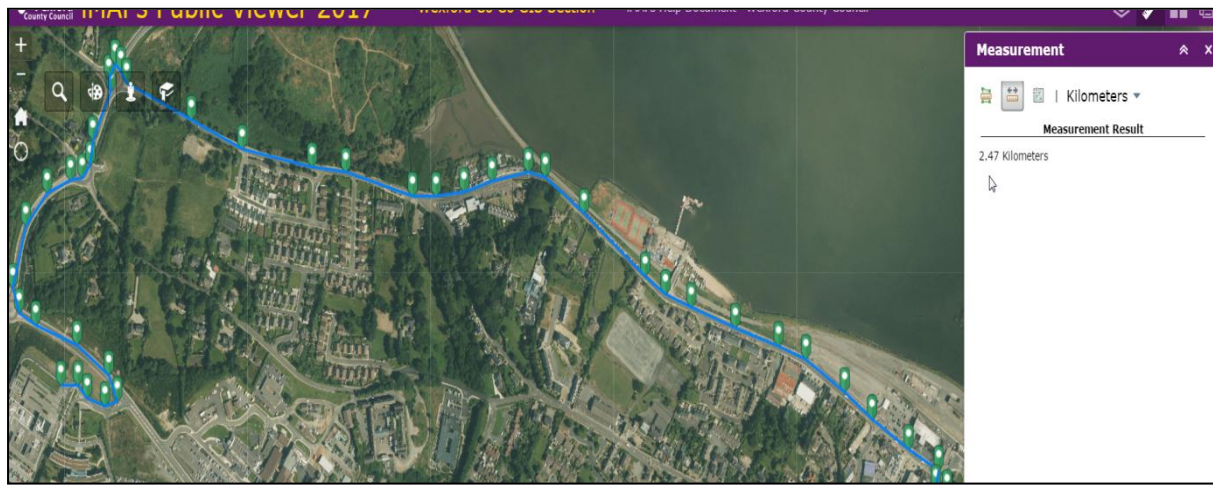
The bookmark widget can be used to zoom quickly to certain locations. For example, if you have an interest in planning application around Gorey, you can bookmark the map area around Gorey and quickly move the map to that location. This allows you to quickly locate to the areas in the map you use regularly.





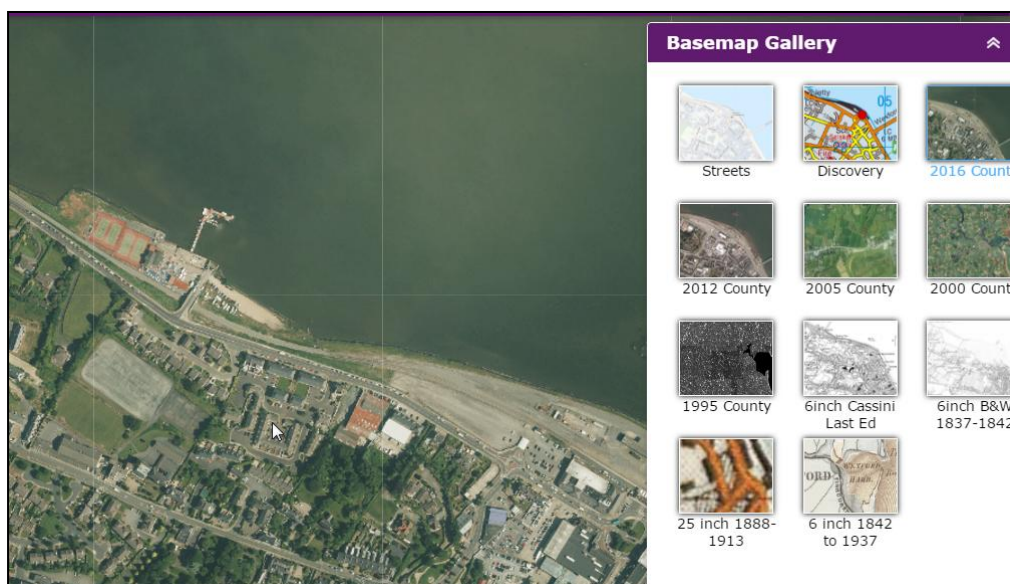
### 5.3 Measure Widget

This widget allows you to measure distances and areas. The image below shows the distance from County Hall to Redmond Square in Wexford Town and has been calculated as 2.47 km. In addition, this widget allows you to measure areas in metric or imperial and also coordinates in Latitude and Longitude.



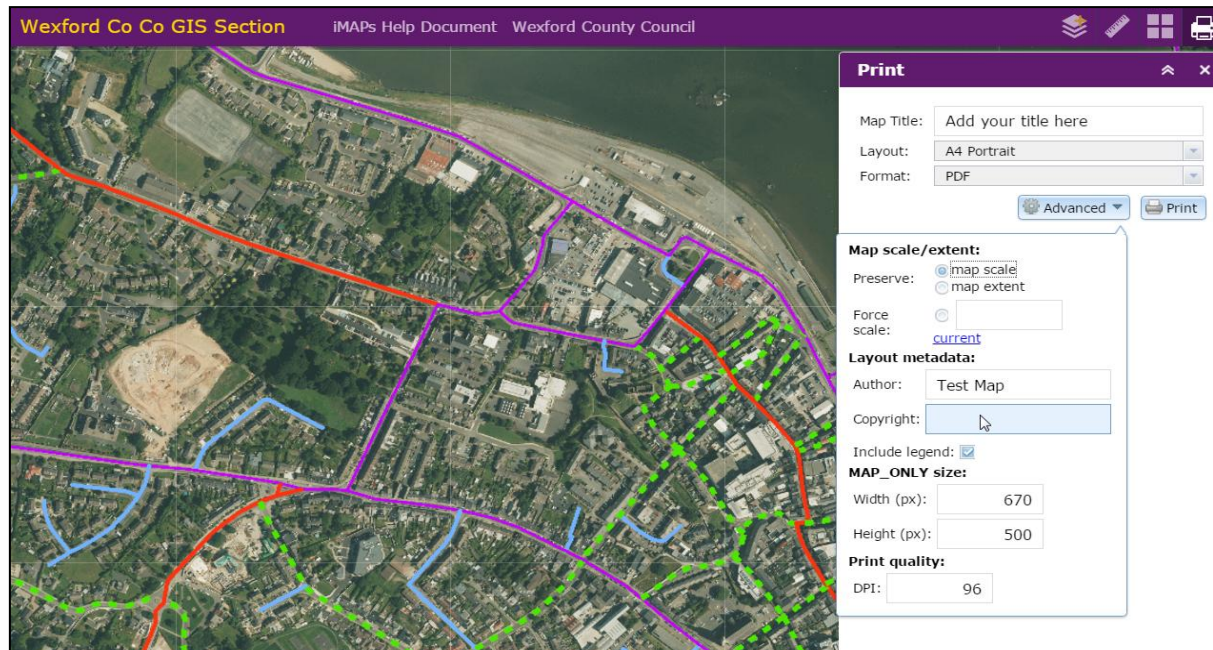
### 5.4 Basemap Gallery

The basemap gallery widget has a number of different maps that you can use as a background map. These include high resolution aerial imagery recorded in 2016 as well as historical imagery and other Ordnance Survey Ireland basemaps.



## 5.5 Print Widget

The print widget allows you to print a map of a particular location to a professional standard and can be used with any active layers and images drawn by the user during their session.



This is an example of the print image generated which has additional functionality like title and scale that can be altered depending on your requirements.

The map shown has the road network around Wexford Town displayed. The legend and annotation show are generated as part of the print widget functionality.

## 6. Conclusion

It is hoped that this new version of iMAPs will provide a useful tool to support a range of different uses including planning, recreation, heritage, zoning, transport and local services such as playgrounds to name but a few.

In addition, the new version is available to use on any of your devices from PC to laptop to any mobile devices.

If you have any questions or concerns please contact Wexford County Council by emailing [gis@wexfordcoco.ie](mailto:gis@wexfordcoco.ie)



## Appendix I

Table of Layers that are available in iMAPs as of April 2017.

	Category	Sub Layer / Dataset	N o
	Planning	Planning Applications	1
County Development Plan	County Development Plan 2013 – 2019	Coastal Zone Mgmt	2
		Wind Strategy	3
		Rural Area Types	4
		Landscapes Greater Sensitivity	5
		Landscape Character Assessment	6
Town and Local Area Plans	Zoning	Current Development Plans	7
		Current Local Area Plans	8
		Other Current Plans	9
		Expired Plans	10
Boundaries	Boundaries	County Boundary	11
		Townlands	12
		Electoral Divisions	13
		Municipal Districts	14
		Catholic Parishes	15
Transport	Transport	National Road Schemes (existing and proposed)	16
		Rail Track	17
		Rail Station	18
		Road Network	19
Historical Structures	Historical Features & Structures	Protected Structures	20
		Lime Kilns	21
		National Monuments	22
		National Inventory of Architectural Heritage	23
Local Services	Local Services	Council Buildings	24
		Fire Stations	25
		Libraries	26
		Playgrounds	27
Census	Census - 2016	Wexford Electoral Division Preliminary Census 2016	28

	Category	Sub Layer / Dataset	N o
Environmental Information	Recycling	Recycling Locations	29
		Civic Amenity Sites	30
	Coastal and Marine	BlueFlagAward	31
		GreenCoastAwards	32
		DesignatedBathingAreas	33
		Piers and Harbours	34
	Protected Areas	BeachByeLaws	35
		Sevesco Sites	36
		Shellfish Protected Area	37
	Freshwater	Groundwater Water Quality	38
		Aquifer	39
		Ground Water Status	40
	Water Catchments	Water Body Catchments	41
	Soils and Topography	Soils	42
		SubSoils	43
		Rock Units	44
		Contours	45
NPWS	NPWS Designated Areas	Special Protection Areas	46
		Proposed Natural Heritage Areas	47
		Natural Heritage Areas	48
		Special Area of Conservation	49
Recreational Facilities	Walking Trails	Walking Trails Starting Point	50
		Walking Trails	51
	Cycle Routes	Norman Way Sites	52
		Norman Way Route	53
		Eurovelo Cycle Route	54
		Cycle Routes Failte Ireland	55
		Popular Cycle Routes	56
		Norman Way & Eurovelo Signs	57
		South East Cycling Routes	58
		Designated Bathing Areas	59
	Beaches and Access	Accessible Beaches	60
		Shore Angling Beaches	61
	Angling	Shore Angling Parking	62