

SOLID GEOLOGY OF CO. WEXFORD  
WITH  
SCHEME WELLFIELD LOCATIONS

GROUNDWATER BASED WATER SUPPLY SCHEMES

NO.	SCHEME	HOUSE/DEMAND
1	BALLYHOGUE	14 Houses
2	BOLEYVOGUE	14
3	BARRACURRAGH	04
4	MONAMOLIN	10
5	BREE	0.02 m.g.d.
6	CLONROCHE	0.06
7	CARRICKBYRNE	0.08
8	BURNT SCHOOL	0.02
9	CONNAGH	0.02
10	CAMOLIN	0.015
11	NEWBAWN	15 Houses
12	GLYNN	04
13	KILMYSHALL	18
14	MONAGEAR	16
15	CASTLEDOCKRELL	18
16	OULART	14
17	MARSHALSTOWN	12
18	BALLYWILLIAM	18
19	KILTEALY	14
20	BALLINDAGGAN	14
21	BARNTOWN	21
22	TELLAROUGH	06
23	KILLINIERIN	06
24	TAGHMON	70
25	RAHEENAHENNEDY	05
26	KILLURIN	0.02 m.g.d.
27	THE MOYNE	0.02
28	KILLAGOLEY	0.20
29	BALLINA	0.10
30	KILMUCKRIDGE	0.12
31	EDERMINE	1.00 (PROPOSED)
32	COOLGREANEY	0.18
33	BALLYHOGUE SPRINGS	0.015

LEGEND

- Limestone and Dolomites
- Red Sandstones and Siltstones
- Granite
- Volcanics and Shale
- Shales, Slates and Greywackes
- Slates, Sandstones and Siltstones
- Greywackes and Quartzites
- Gneisses, Schists and Granulites
- Granite

CARBONIFEROUS

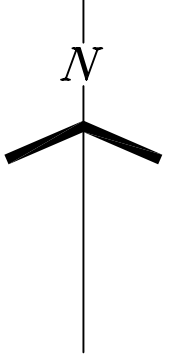
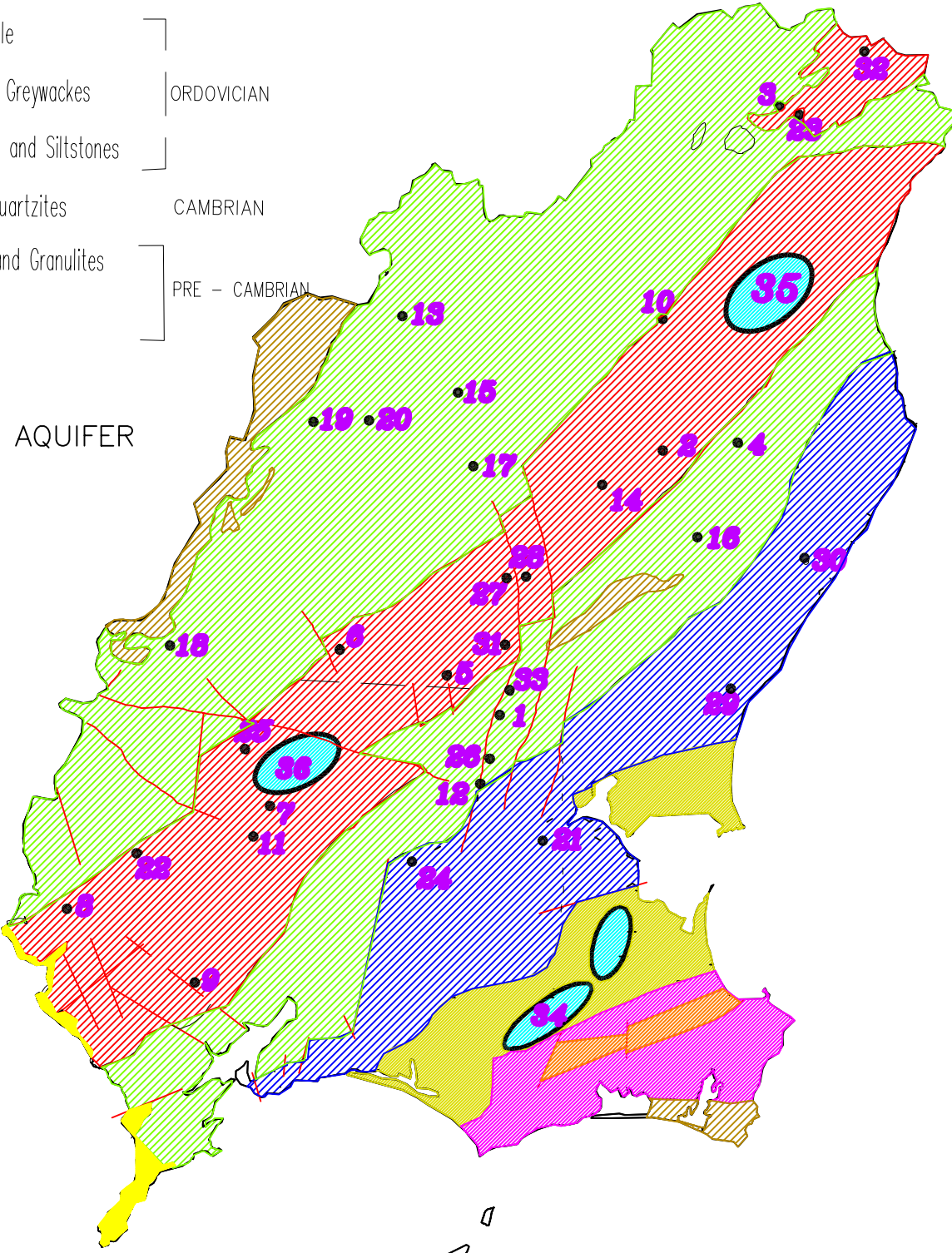
POST-SILURIAN - PRE-DEVONIAN

ORDOVICIAN

CAMBRIAN

PRE - CAMBRIAN

MAJOR AQUIFER



GROUNDWATER BASED WATER SUPPLY SCHEMES

NO.	SCHEME	TOTAL WELL FIELD OUTPUT
34	SOUTH REGIONAL	2.00 m.g.d.
	SOUTH REGIONAL INCREASING TO	4.00 m.g.d
35	GOREY REGIONAL	0.50 m.g.d.
36	CAMROSS/ADAMSTOWN	1.00 m.g.d (PROPOSED)

GROUND WATER PROTECTION SOURCE AND MAJOR AQUIFER PROTECTION ZONES

MAP No.2