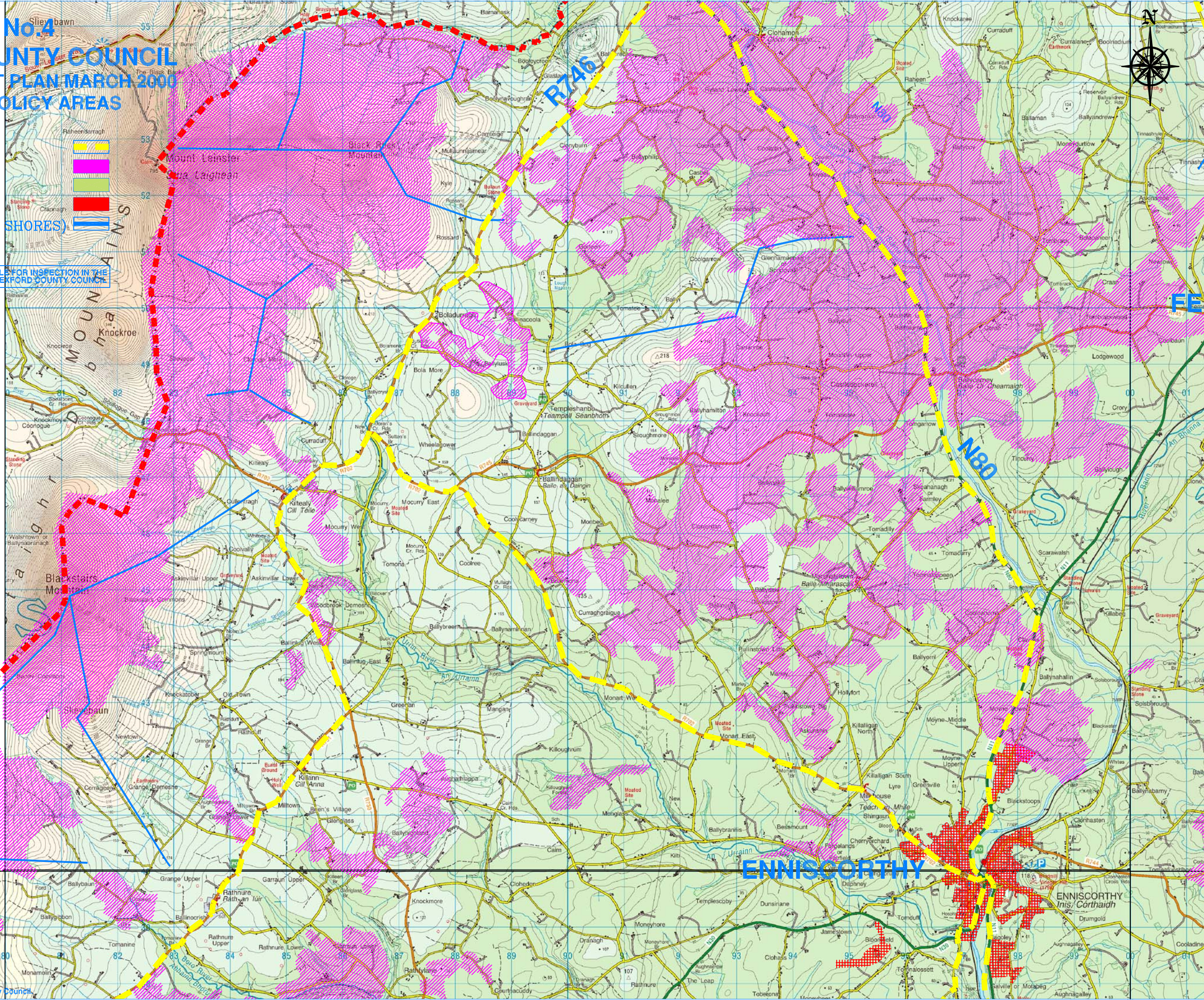


MAP No.4 WEXFORD COUNTY COUNCIL DRAFT DEVELOPMENT PLAN MARCH 2000 LANDSCAPE POLICY AREAS

- KEY**
- SCENIC ROUTE
 - SENSITIVE LANDSCAPE
 - NORMAL LANDSCAPE
 - ROBUST LANDSCAPE
 - VULNERABLE (RIDGES & SHORES)



DETAILED MAPS ARE AVAILABLE FOR INSPECTION IN THE PLANNING DEPARTMENT OF WEXFORD COUNTY COUNCIL



BOUNDARY

ENNISCORTHY