

Socio-Economic Profile 4:

Education and Field of Study



SOCIO-ECONOMIC PROFILE 4 – EDUCATION AND FIELD OF STUDY

EDUCATION AND FIELD OF STUDY

Indicator 1	Educational Attainment, 2016 (Source: CSO & AIRO)	7
Indicator 2	Education Attainment - No Formal/Primary, 2016 (Source: CSO & AIRO)	8
Indicator 3	Education Attainment - Lower Secondary, 2016 (Source: CSO & AIRO)	10
Indicator 4	Education Attainment - Higher Secondary, 2016 (Source: CSO & AIRO)	12
Indicator 5	Education Attainment - Technical/Apprentice/Certificate 2016 (Source: CSO & AIRO)	14
Indicator 6	Education Attainment - Lower 3rd Level, 2016 (Source: CSO & AIRO)	16
Indicator 7	Education Attainment - Higher 3rd Level, 2016 (Source: CSO & AIRO)	18
Indicator 8	Education Attainment - All 3rd Level, 2016 (Source: CSO & AIRO)	21
Indicator 9	Field of Study, 2016 (Source: CSO & AIRO)	23
Indicator 10	Field of Study - Education and Teacher Training, 2016 (Source: CSO & AIRO)	24
Indicator 11	Field of Study - Arts, 2016 (Source: CSO & AIRO)	26
Indicator 12	Field of Study - Humanities, 2016 (Source: CSO & AIRO)	28
Indicator 13	Field of Study - Social Sciences, Business and Law, 2016 (Source: CSO & AIRO)	30
Indicator 14	Field of Study - Science, Mathematics and Computing, 2016 (Source: CSO & AIRO)	32
Indicator 15	Field of Study - Engineering, Manufacturing and Construction, 2016 (Source: CSO & AIRO)	34
Indicator 16	Field of Study - Agriculture and Veterinary, 2016 (Source: CSO & AIRO)	36
Indicator 17	Field of Study - Health and Welfare, 2016 (Source: CSO & AIRO)	38
Indicator 18	Field of Study - Services, 2016 (Source: CSO & AIRO)	40

This section explores the education profile of Wexford and focuses on aspects of educational attainment at primary, secondary, and third level education. The initial section looks at the overall education attainment levels within the Wexford population followed by a detailed profile of the qualifications and skills associated with those who have completed their full time education.

This report forms part of a series of 6 thematic reports on 'Economy', 'Commuting Flows', 'Demographics', 'Health and Disability' and 'Housing'. All reports are primarily derived from the results from Census 2016 but also include additional datasets from other key authoritative sources in Ireland.

Key Facts

1. Wexford has low levels of third level attainment. A total of 24.5% of the population (15+) have a third level degree or higher - the 4th lowest rate in the country. The county has the 6th highest rate of low education achievement (no formal/primary only - 15.8%) and the 2nd highest rate of medium education achievement (lower secondary - 18.6%). A total of 20.2% of the Wexford population have an education attainment level classed as higher secondary education.

2. Between 2011 and 2016 the rate of third level attainment has increased by 21.3% (4,339) in Wexford. The rate of increase is in line with a general trend across all local authorities with Wexford recording the 4th highest rate of increase and considerably higher than the State average (18.2%). Conversely, the rate of low education achievement (No Formal/Primary) has decreased by -11.5% (-2,076).

2. There are clear spatial variations in education attainment across Wexford. High levels of educational attainment (third level plus) are evident the main urban centres of Enniscorthy and in particular the east of the county in Wexford Town and Gorey. The west and south-west of the county, more rural and peripheral, have much lower rates with New Ross MD having a rate of only 22.4% which is considerably lower than the Wexford MD average of 26.8%.

3. The main field of study of Wexford residents is similar to the State profile. The 'Social Sciences, Business and Law' category was the most popular field of study among all those with third level qualifications and accounts for 10.7% of the Wexford population who have completed their education. Wexford has higher than average rates in both the 'Agriculture and Veterinary' (3.7%) and 'Services' (4.5%) fields.

SOCIO-ECONOMIC PROFILE 4 – EDUCATIONAL ATTAINMENT

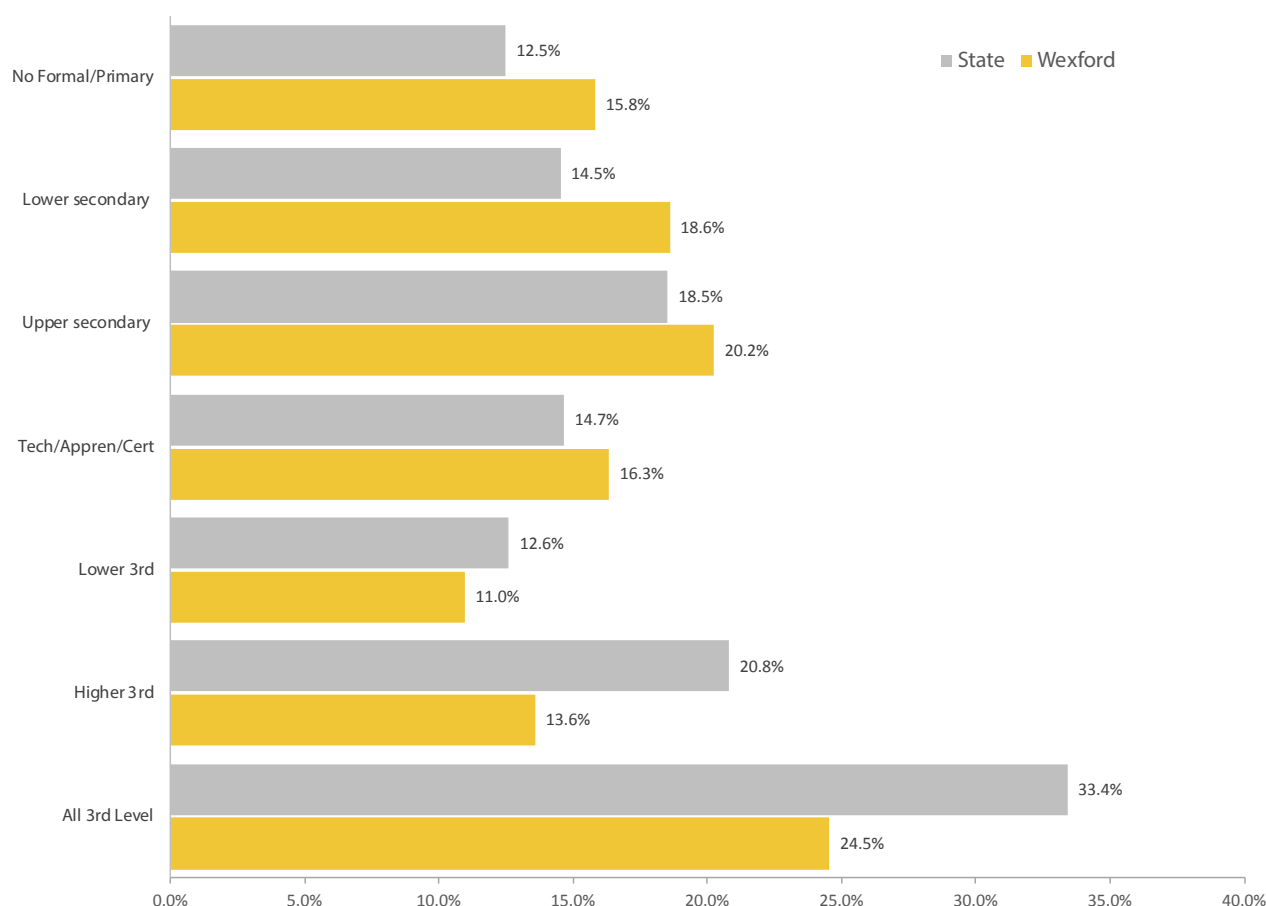


Figure 1 Highest level of Education Attainment Summary, 2016 (Source: CSO & AIRO)

The progressive improvement in education attainment across the State is evident in the results from Census 2016 and is closely correlated to the age profile of the population. For instance, for those aged 60 and over, 34.4% were educated to primary level compared with 3.6% for those aged 15-39 years of age. This improving trend is also apparent in Wexford with the county having witnessed a decrease of those educated to primary level only (-11.5%) and an increase in those achieving a third level education (+21.3%).

The graphic above details the education attainment levels of those who have completed their education within Wexford and the State. Education attainment is separated into six categories: No Formal or Primary Only, Lower Secondary, Higher Secondary, Technical/Voluntary/Apprenticeship, Lower Third Level and Higher Third Level.

In contrast with national results from Census 2016, Wexford has a higher than average level of attainment in the lowest category of No Formal/Primary (15.8%) with a rate that is the 6th highest in the State. Wexford also scores higher than the national average for other lower tiers of attainment; Lower Secondary (18.6%), Upper Secondary (20.2%) and Technical/Apprenticeship/Certificate (16.3%).

Wexford has one of the lowest rates of resident population with third level education in the State, with rates of 11% with Lower Third Level (higher certificate or ordinary bachelor degree) and 13.6% with Higher Third Level (honours degree, postgraduate or PhD) – the 3rd and 4th lowest rates in the State. Thus, the figure for All Third Level degrees was 24.5%, the 4th lowest in the State. The following section provides more details on the six education attainment categories.

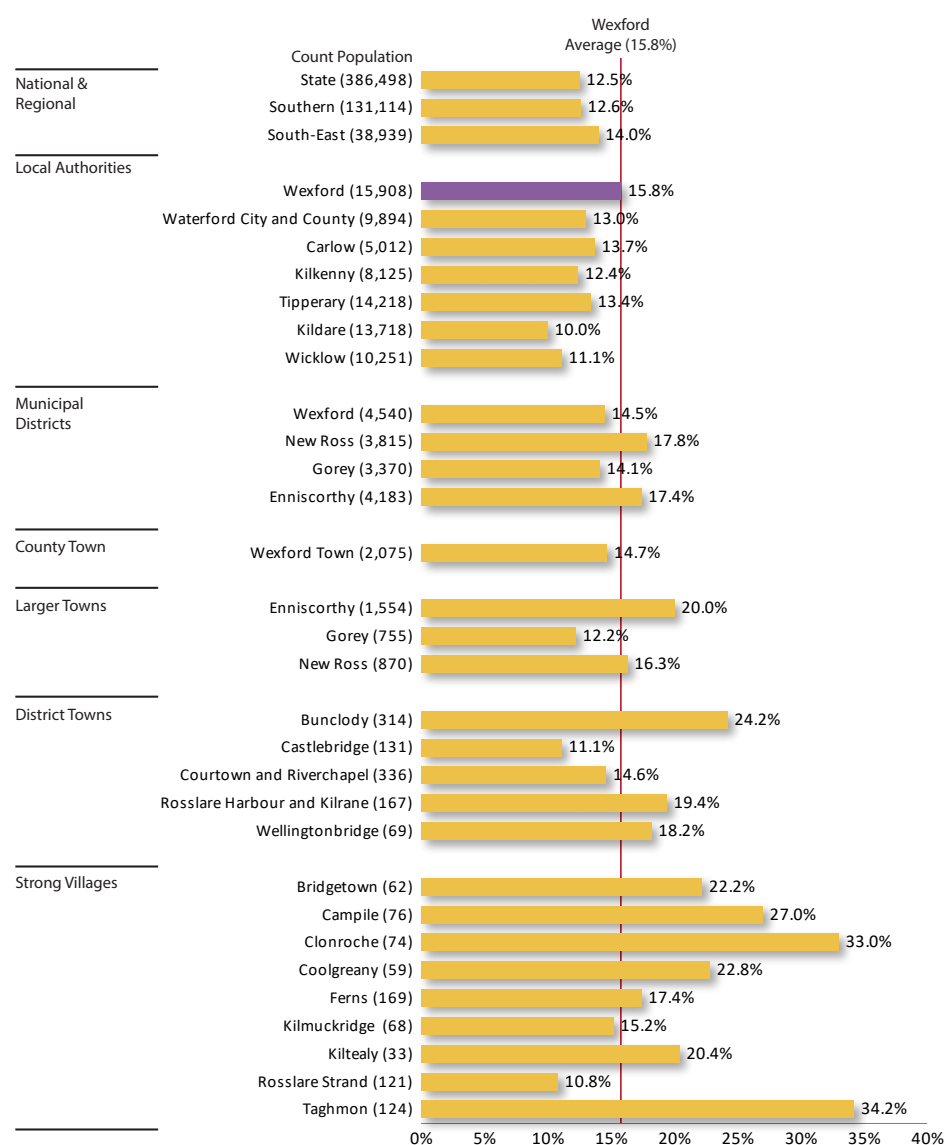


Figure 2: Education - No Formal/Primary, 2016 (Source: CSO & AIRO)

How is Wexford performing?
% Completed Education

6/31

Local Authority
1 is the highest, 31 is the lowest

↑

National
Higher than Average

↑

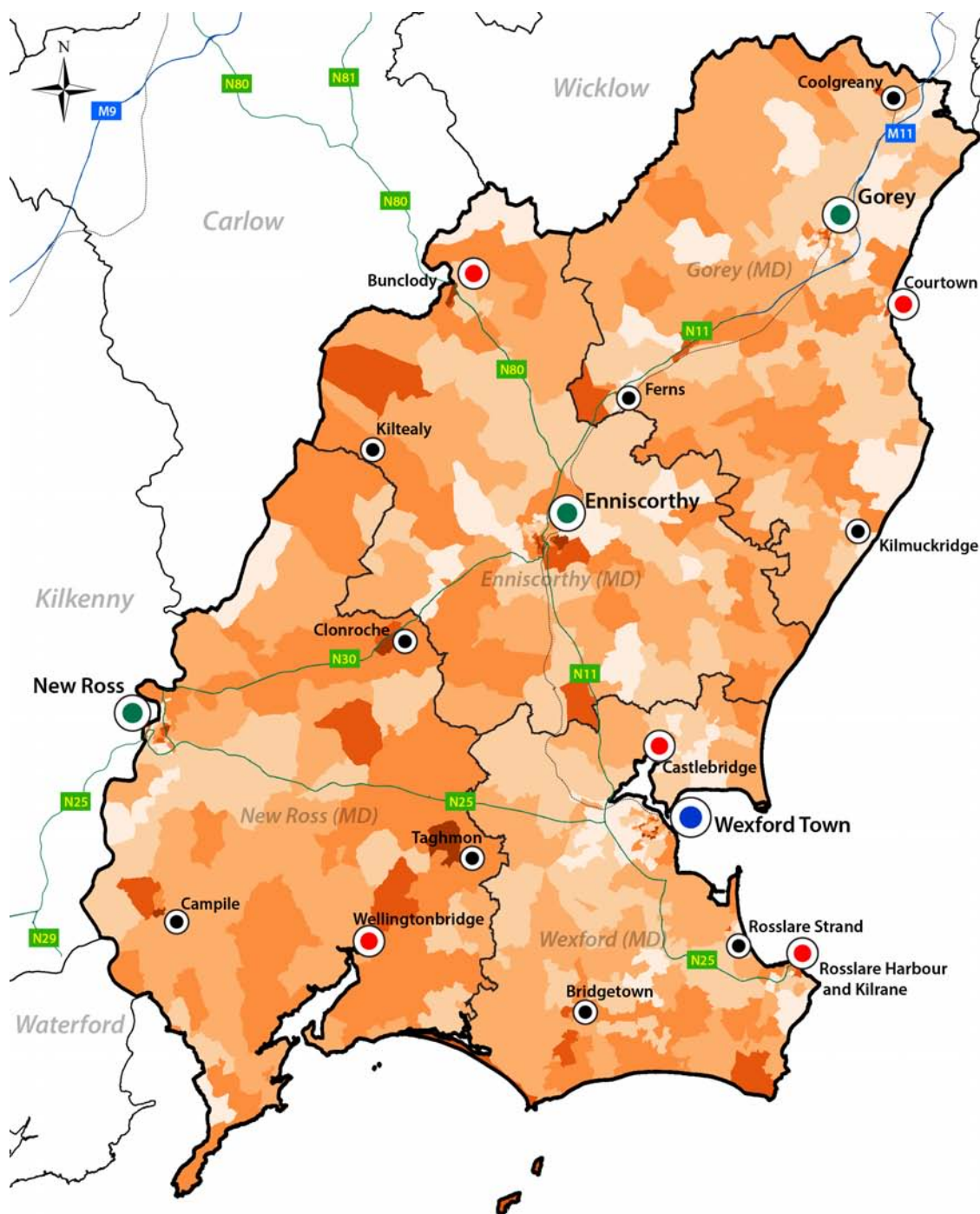
Southern RA
Higher than Average

How is Wexford performing?
Number Completed Education

7/31

Local Authority
1 is the highest, 31 is the lowest

- According to 2016 Census, the population (who have completed their education) with No Formal/Primary Education Only residing in Wexford was 15,908 and represents 15.8% of the total population aged 15+. This rate is higher than the State (12.5%), Southern RA (12.6%) and South-East SPA (14%) averages.
- Relative to other local authorities, Wexford has the 7th highest number of its population with No Formal/Primary education in the State and this was the 6th highest rate. The highest rates in the State are in Donegal (20.4%) and Monaghan (17%) and the lowest in DLR (6.4%) and Fingal (7.7%). Since 2011, the rate has decreased from 18.5% to 15.8% and represents a drop of 2,076 (-11.5%) with No Formal/Primary education.
- At the Municipal District level, there is a considerable variation with lowest rates recorded in Wexford MD (14.5%) and Gorey MD (14.1%). In contrast to this, both New Ross MD (17.8%) and Enniscorthy MD (17.4%) have much higher rates. Across the settlement hierarchy the highest rates are found in Taghmon (34.2%), Clonroche (33%), Campile (27%), Bunclody (24.2%) and Coolgreany (22.8%).



Education Attainment - No Formal or Primary, 2016



Map 2: Education - No Formal/Primary, 2016 (Source: CSO & AIRO)

The map provides an illustration of the rates of No Formal/Primary Education within and across the Wexford Small Areas (SAs). Highest rates are found in the west of the county throughout the New Ross and Enniscorthy MDs along with pockets in urban settlements. Especially high rates are visible in both Clonroche and Taghmon.

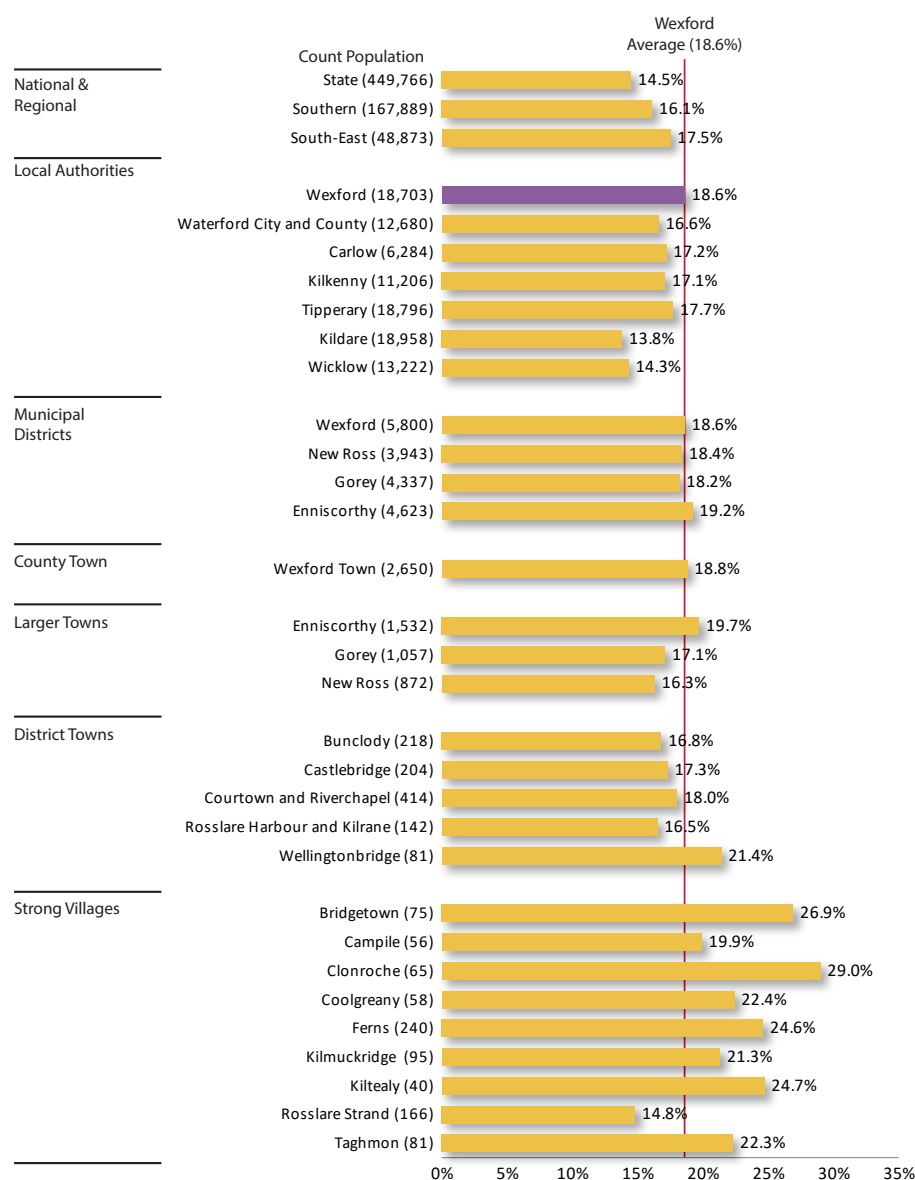


Figure 3: Education - Lower Secondary, 2016 (Source: CSO & AIRO)

How is Wexford performing?
% Completed Education

2/31

Local Authority
1 is the highest, 31 is the lowest

↑

National
Higher than Average

↑

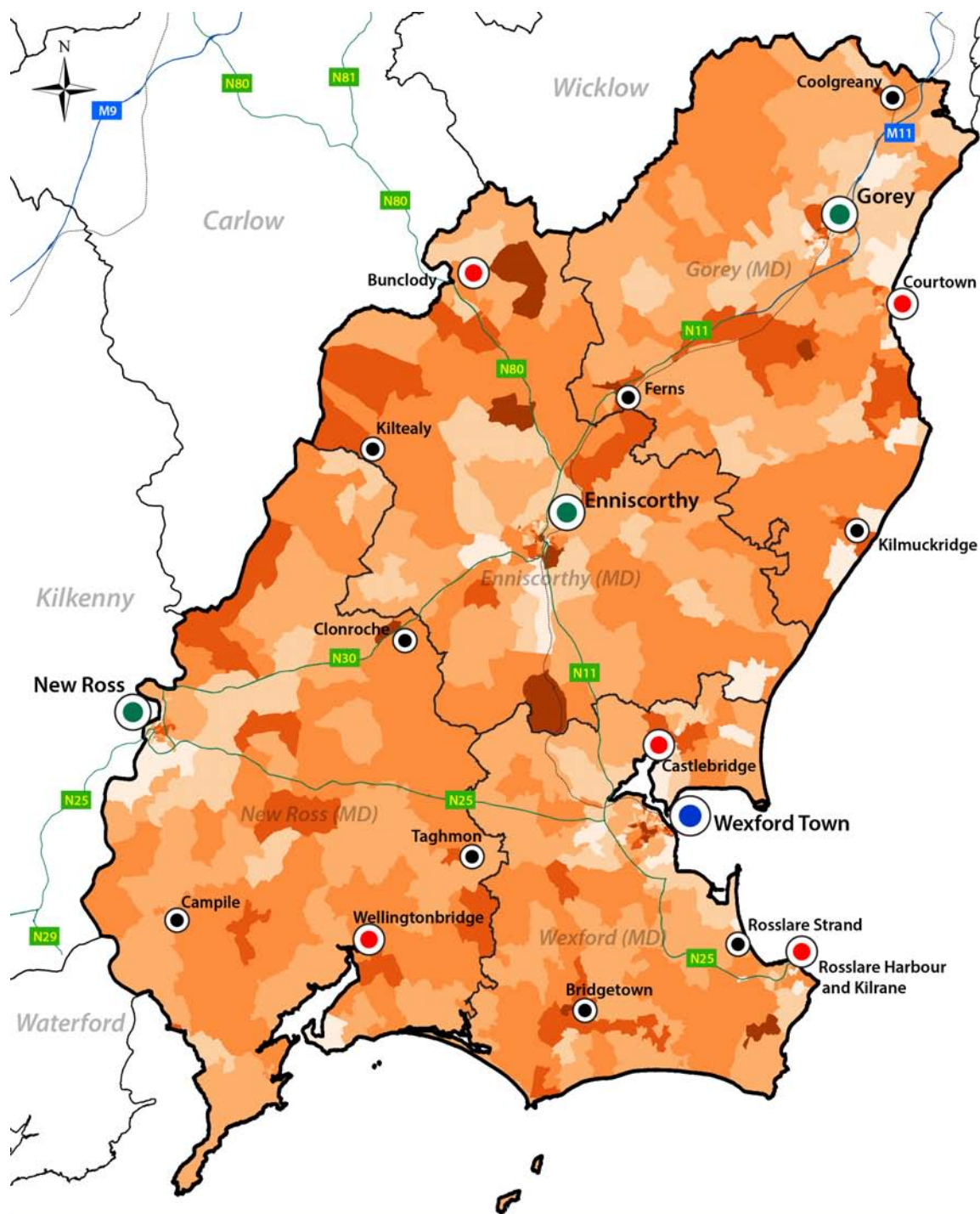
Southern RA
Higher than Average

How is Wexford performing?
Number Completed Education

8/31

Local Authority
1 is the highest, 31 is the lowest

- According to 2016 Census, the population (completed education) with Lower Secondary (Junior Cert) Education residing in Wexford was 18,703 and represents 18.6% of the total population aged 15+. This rate is higher than the State (14.5%), Southern RA (16.1%) and South-East SPA (17.5%) averages.
- Relative to other local authorities, Wexford has the 8th highest number population with Lower Secondary education in the State and this was the 2nd highest rate. The highest rate in the State is in Monaghan (18.8%) and the lowest in DLR (8.3%) and Galway (8.8%). Since 2011, the rate has decreased from 20.7% to 18.6% and represents a drop of 1,417 (-7%) with Lower Secondary education.
- At the Municipal District level, a small variation is evident with highest rates recorded in Enniscorthy MD (19.2%) and Wexford MD (18.6%). In contrast, lower rates are found in New Ross MD (18.4%) and Gorey MD (18.2%). Across the settlement hierarchy the highest rates are found in Clonroche (29%), Bridgetown (26.9%), Ferns (24.6%), Kiltealy (24.7%), Coolgreany (22.4%) and Taghmon (22.3%).



Education Attainment - Lower Secondary, 2016



Map 3: Education - Lower Secondary, 2016 (Source: CSO & AIRO)

The map provides an illustration of the rates of the Lower Secondary Education within and across the Wexford Small Areas (SAs). There is a mixed distribution throughout the county with high rates recorded in urban settlements, small rural settlements and rural areas across the county.

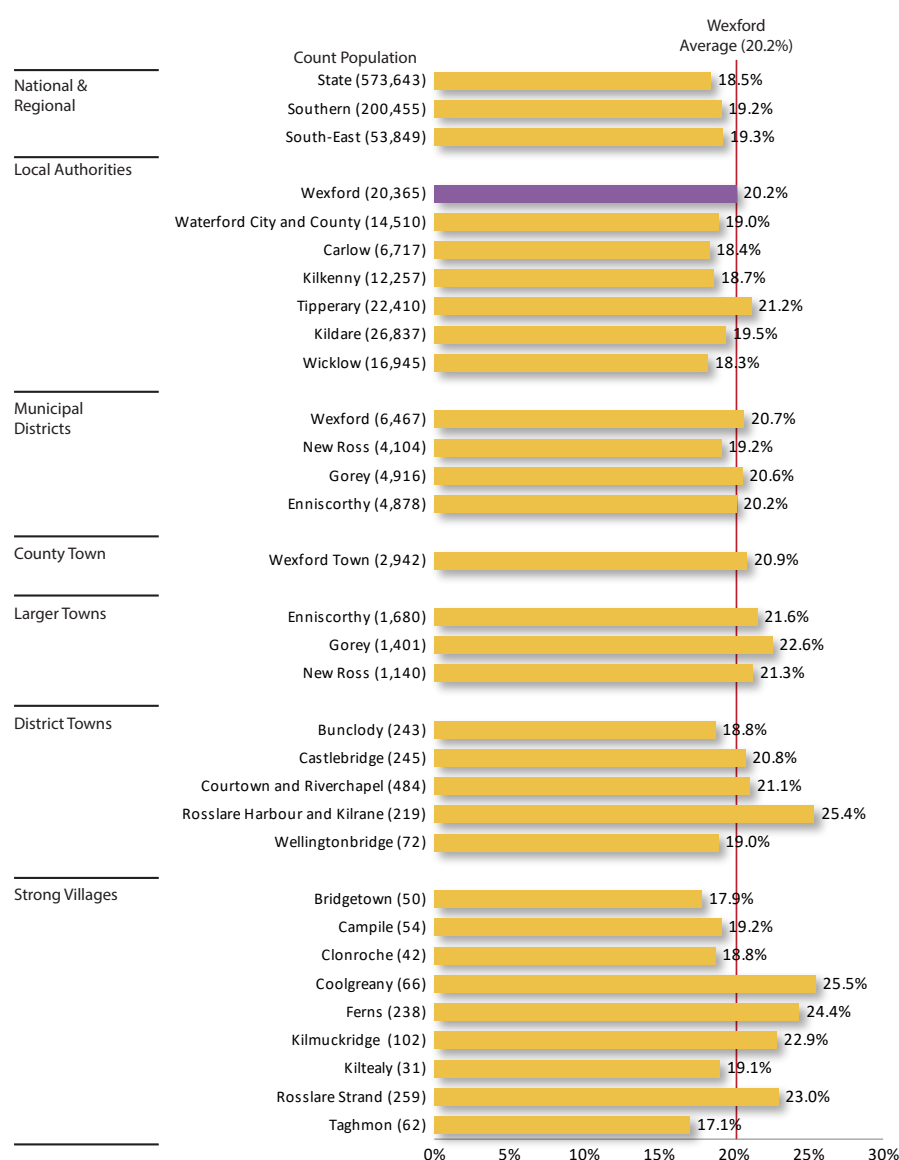


Figure 4: Education - Higher Secondary, 2016 (Source: CSO & AIRO)

How is Wexford performing?
% Completed Education

6/31

Local Authority
1 is the highest, 31 is the lowest



National
Higher than Average



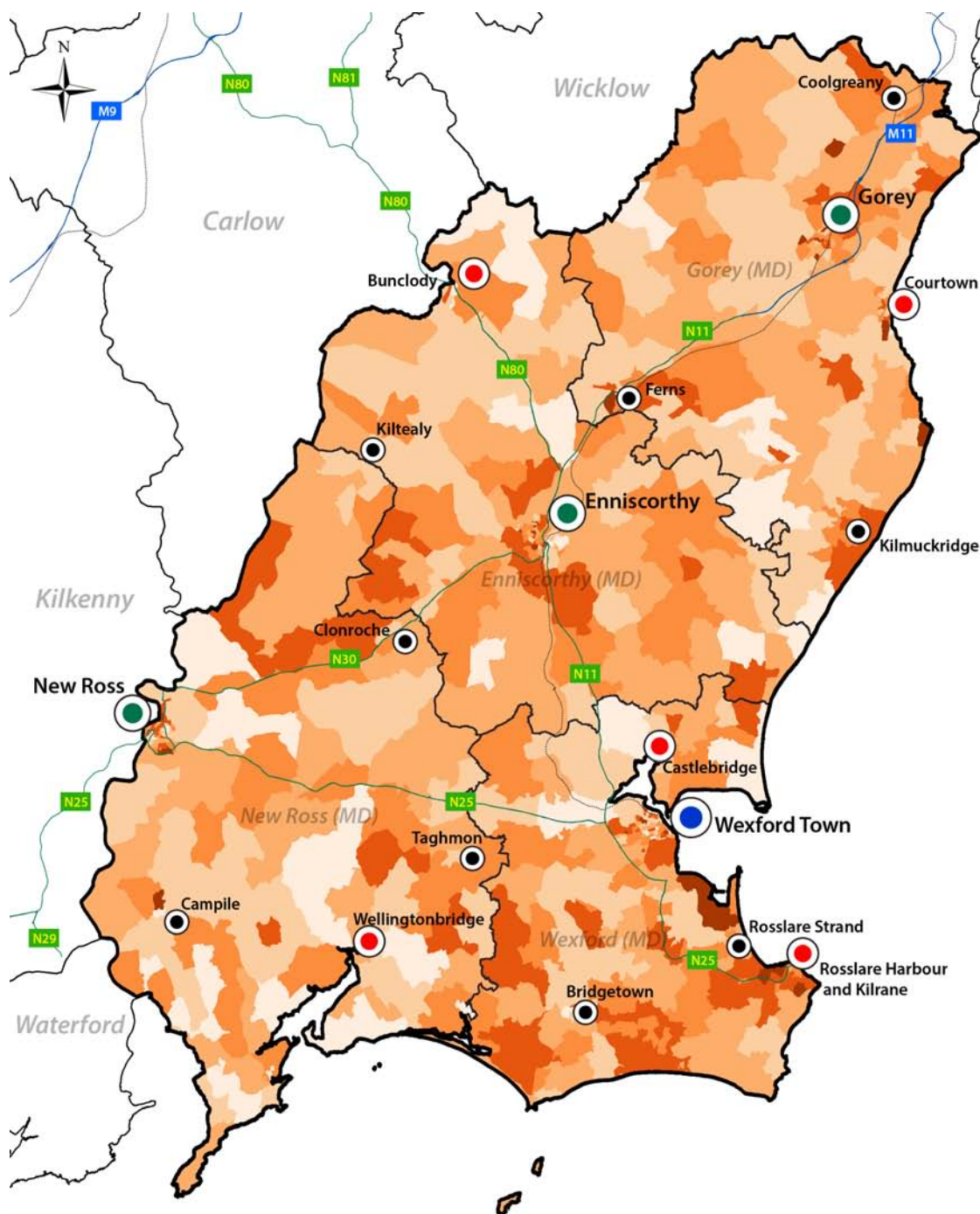
Southern RA
Higher than Average

How is Wexford performing?
Number Completed Education

11/31

Local Authority
1 is the highest, 31 is the lowest

- According to 2016 Census, the population (completed education) with Higher Secondary (Leaving Cert) Education residing in Wexford was 20,365 and represents 20.2% of the total population aged 15+. This rate is higher than the State (18.5%), Southern RA (19.2%) and South-East SPA (19.3%) averages.
- Relative to other local authorities, Wexford has the 11th highest number population with Higher Secondary education in the State and this was the 6th highest rate. The highest rates in the State are in Mayo (21.3%) and Tipperary (21.2%) and the lowest in Dublin City (14.7%) and Galway City (16%). Since 2011, there has been an increase of 167 (0.8%) with Upper Secondary education only.
- At the Municipal District level, a small variation is evident with the highest rates recorded in Wexford MD (20.7%), Gorey MD (20.6%) and Enniscorthy MD (20.2%). In contrast, a marginally lower rate is recorded in the New Ross MD (19.2%). Across the settlement hierarchy the highest rates are found in Coolgreany (25.5%), Rosslare Harbour and Kilrane (25.4%), Ferns (24.4%), Rosslare Strand (23%), Kilmuckridge (22.9%) and Gorey (22.6%).



Education Attainment - Higher Secondary, 2016



Map 4: Education - Higher Secondary, 2016 (Source: CSO & AIRO)

The map provides an illustration of the rates of the Higher Secondary Education within and across the Wexford Small Areas (SAs). In general, there is a varied distribution with the highest rates tending to be in close proximity to urban settlements across the county with high concentrations south east of Wexford Town and close to towns such as like Gorey and Enniscorthy. Many other smaller towns also have high rates greater than 21%.

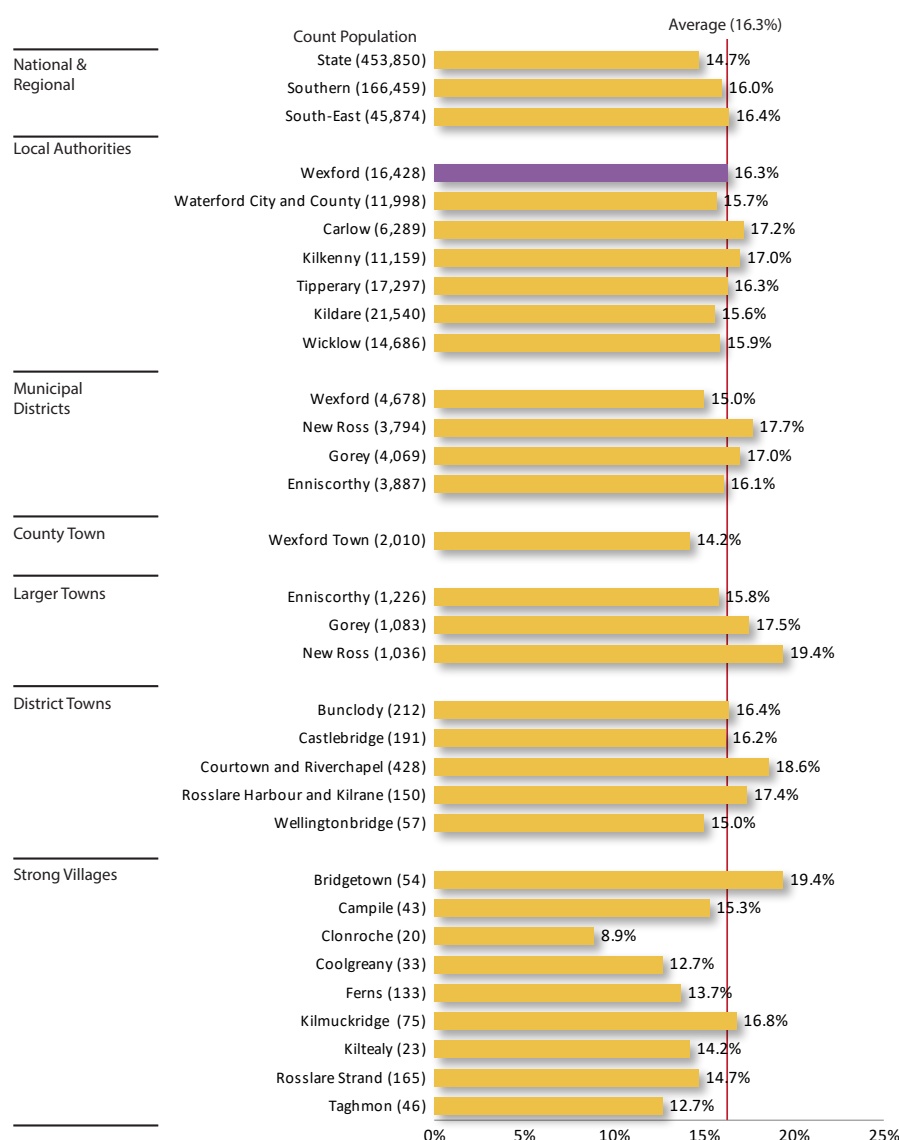


Figure 5: Education - Technical/Apprentice/Certificate 2016 (Source: CSO & AIRO)

How is Wexford performing?
% Completed Education



Local Authority
1 is the highest, 31 is the lowest



National
Higher than Average



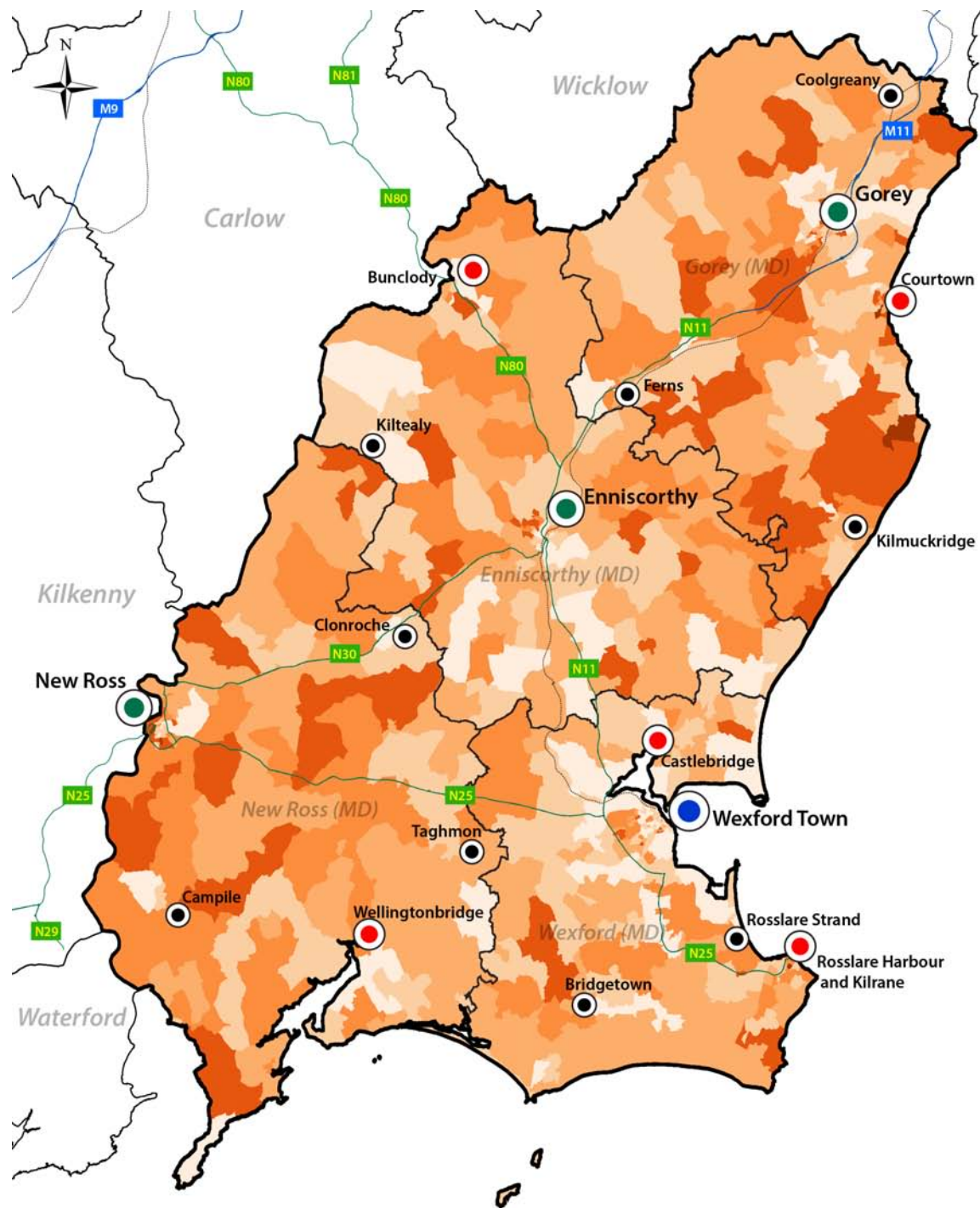
Southern RA
Higher than Average

How is Wexford performing?
Number Completed Education



Local Authority
1 is the highest, 31 is the lowest

- According to 2016 Census, the population (completed education) with 'Apprenticeship, Technical or Vocational Education' residing in Wexford was 16,428 and represents 16.3% of the total population aged 15+. This rate is higher than the State (14.7%) and Southern RA (16%) averages and lower than the South-East SPA (16.4%).
- Relative to other local authorities, Wexford has the 10th highest number population with 'Apprenticeship, Technical or Vocational' education in the State and this was the 10th highest rate. The highest rates in the State are in Cavan (18.6%) and Carlow (17.2%) and the lowest in Dún Laoghaire-Rathdown (10.1%) and Dublin City (10.3%). Since 2011, the rate has increased from 15.8% to 16.3% and represents a rise of 1,091 (7.1%).
- At the Municipal District level there is a moderate variation with the highest rates recorded in the New Ross MD (17.7%) and Gorey MD (17%). In contrast, the lowest rates are found in the Enniscorthy MD (16.1%) and Wexford MD (15%). Across the settlement hierarchy the highest rates are recorded in New Ross (19.4%), Bridgetown (19.4%), Courtown and Riverchapel (18.6%), Gorey (17.5%) and Rosslare Harbour and Kilrane (17.4%).



Education Attainment - Apprenticeship & Technical, 2016



Map 5: Education - Technical/Apprentice/Certificate 2016 (Source: CSO & AIRO)

The map provides an illustration of the rates of the Apprenticeship, Technical or Vocational Education within and across the Wexford Small Areas (SAs). In general, there is a varied distribution with the highest rates tending to be in strong in rural areas across the county with highest concentrations visible in the New Ross and Gorey MDs.

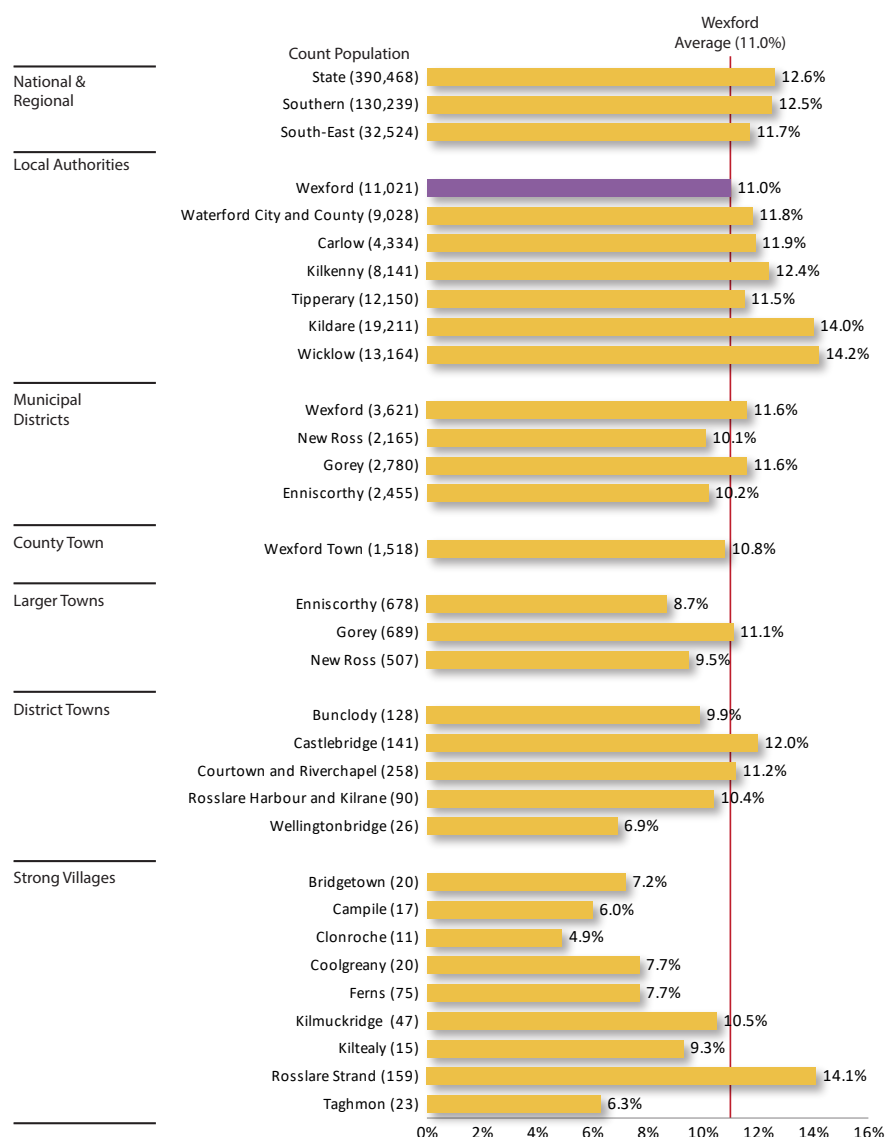


Figure 6: Education - Lower 3rd Level, 2016 (Source: CSO & AIRO)

How is Wexford performing?
% Completed Education

29/31

Local Authority
1 is the highest, 31 is the lowest



National
Lower than average



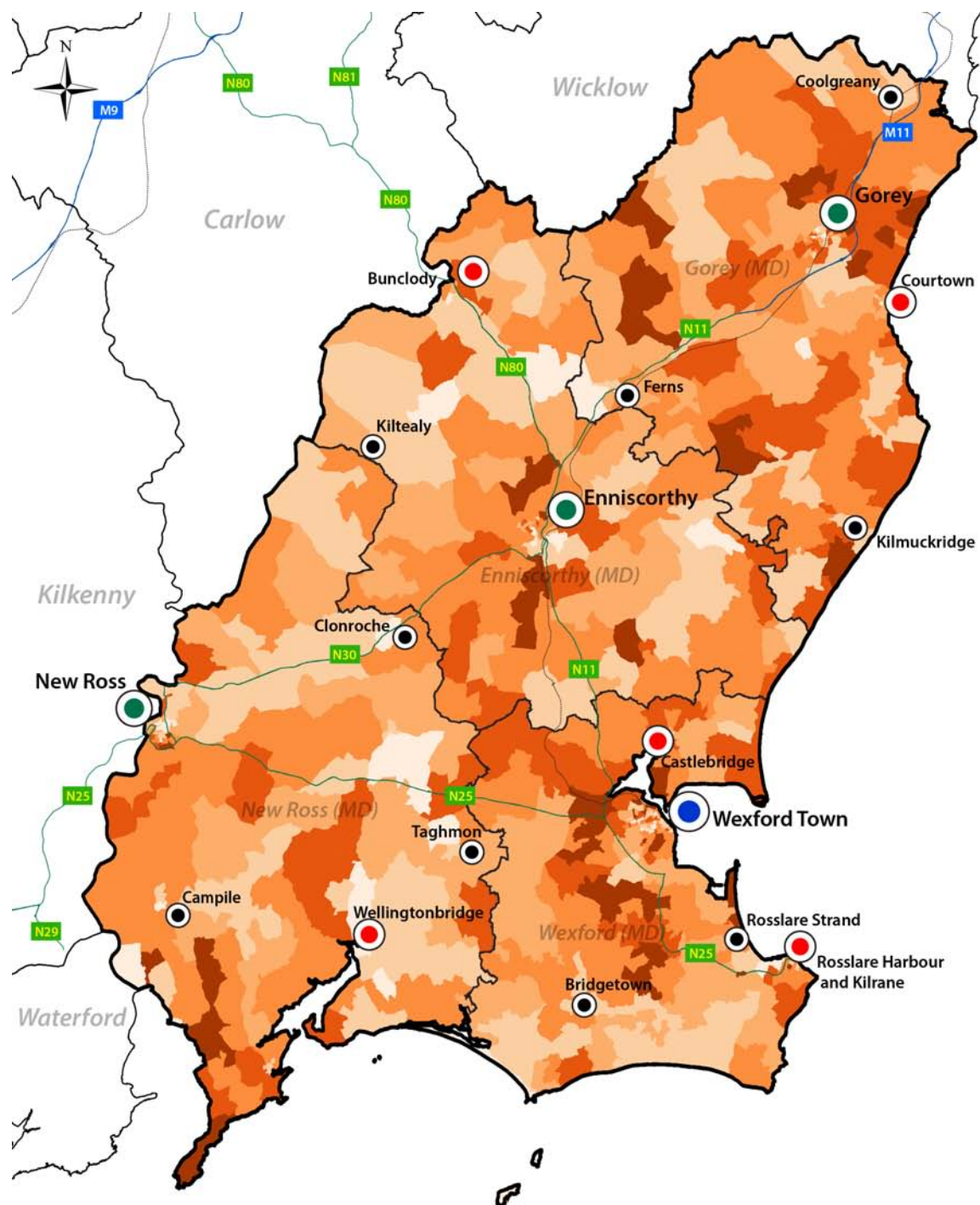
Southern RA
Lower than average

How is Wexford performing?
Number Completed Education

14/31

Local Authority
1 is the highest, 31 is the lowest

- According to 2016 Census, the population (completed education) with Lower Third Level Education (higher cert or ordinary bachelor degree) residing in Wexford was 11,021 and represents 11% of the total population aged 15+. This rate is lower than the State (12.6%), Southern RA (12.5%) and South-East SPA (11.7%) averages.
- Relative to other local authorities, Wexford has the 14th highest number of population with Lower Third Level education in the State and this was the 3th lowest rate. The highest rates in the State are in Galway City (14.9%) and Fingal (14.8%) and the lowest in Monaghan (11.0%), Dublin City (10.9%) and Offaly (10.9%). Since 2011, the rate has increased from 10.2% (4th lowest rate) to 11% and represents a rise of 1,076 (10.7%).
- At the Municipal District level there is a small variation with highest rates recorded in Wexford MD (11.6%) and Gorey MD (11.6%). Lower rates are found in Enniscorthy MD (10.2%) and New Ross MD (10.1%) while in contrast cross the settlement hierarchy the highest rates are recorded in Rosslare Strand (14.1%), Castlebridge (12%), Courtown and Riverchapel (11.2%), Gorey (11.1%) and Rosslare Harbour and Kilrane (10.4%).



Education Attainment - Lower Third Level, 2016



Map 6: Education - Lower 3rd Level, 2016 (Source: CSO & AIRO)

The map provides an illustration of the rates of the Lower Third Level Education within and across the Wexford Small Areas (SAs). Highest rates are concentrated to the eastern part of the county with highest rates recorded proximate to large urban settlements and their surrounding hinterland areas.

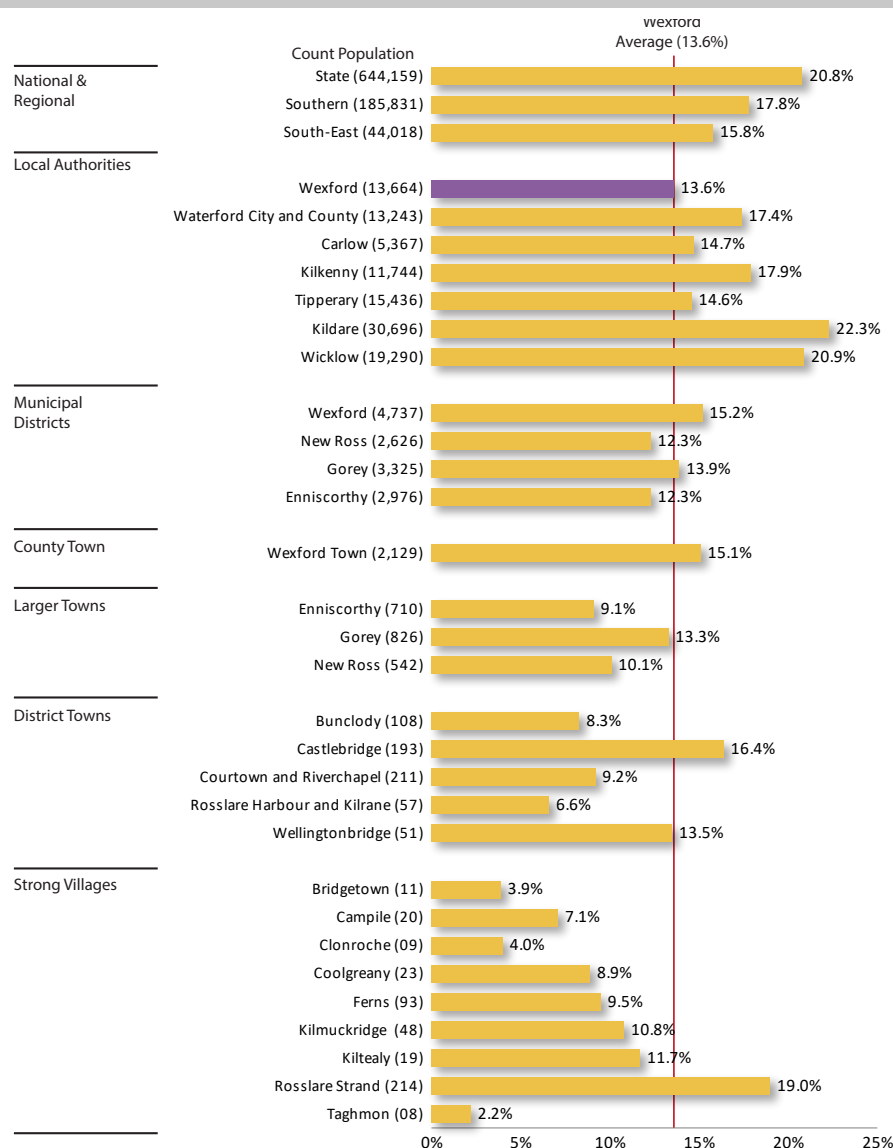


Figure 7: Education - Higher 3rd Level, 2016 (Source: CSO & AIRO)

How is Wexford performing?
% Completed Education

28/31

Local Authority
1 is the highest, 31 is the lowest



National
Lower than average



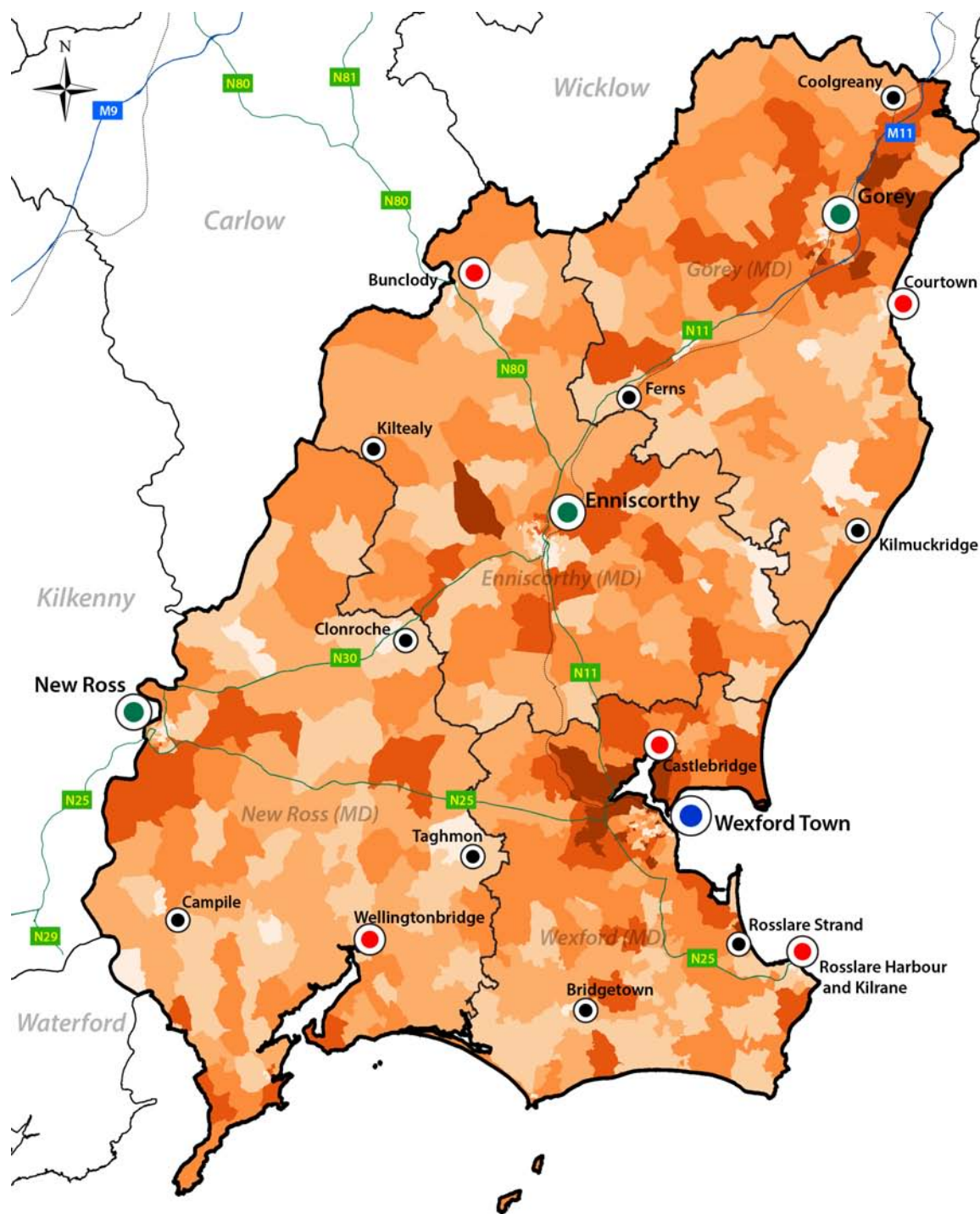
Southern RA
Lower than average

How is Wexford performing?
Number Completed Education

17/31

Local Authority
1 is the highest, 31 is the lowest

- According to 2016 Census, the population (completed edu.) with Higher Third Level Education (honours, post graduate degree or Ph.D.) residing in Wexford was 13,664 and represents 13.6% of the total population aged 15+. This rate is significantly lower than the State (20.8%), and lower than the Southern RA (17.8%) and South-East SPA (15.8%) averages.
- Relative to other local authorities, Wexford has the 17th highest number population with Higher Third Level education in the State and this was the 4th lowest rate. The highest rates in the State are in DLR (40.2%) and Galway City (31.4%) and the lowest in Longford (12.6%) and Cavan (12.8%). Since 2011, the rate has increased from 10.7% (3rd lowest rate) to 13.6% and represents a rise of 3,272 (31.5%).
- At the Municipal District level, there is a considerable variation with highest rates recorded in Wexford MD (15.2%) and Gorey MD (13.9%). In contrast, New Ross MD (12.3%) and Enniscorthy MD (12.3%) have much lower rates. Conversely, across the settlement hierarchy the highest rates are recorded in Rosslare Strand (19%), Castlebridge (16.4%), Wexford Town (15.1%), Wellingtonbridge (13.5%), Gorey (13.3%) and Kilmuckridge (10.8%).



Education Attainment - Upper Third Level, 2016



Map 7: Education - Higher 3rd Level, 2016 (Source: CSO & AIRO)

The map provides an illustration of the rates of the Higher Third Level Education within and across the Wexford Small Areas (SAs). Highest rates are heavily concentrated in large urban settlements with particularly high rates visible in Wexford Town and Gorey and their respective hinterland areas.

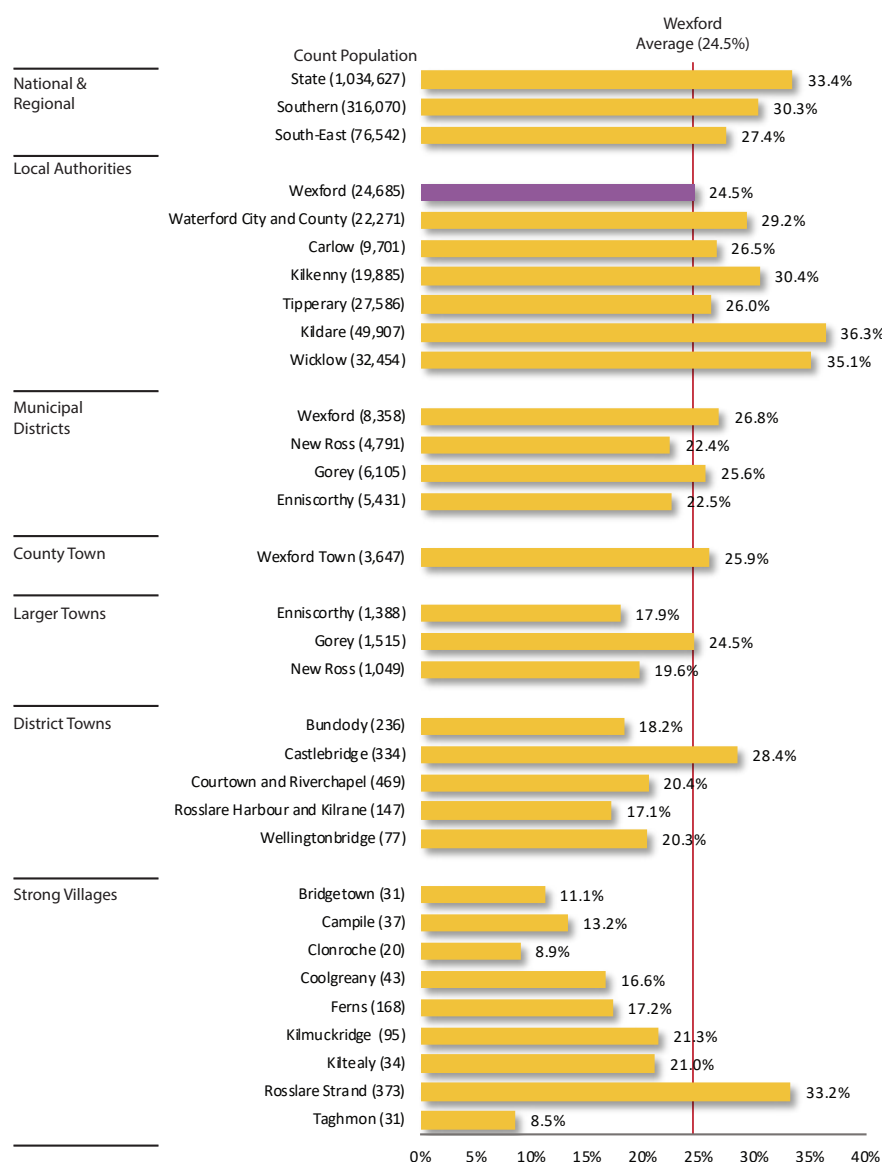


Figure 8: Education - All 3rd Level, 2016 (Source: CSO & AIRO)

How is Wexford performing?
% Completed Education

28/31

Local Authority
1 is the highest, 31 is the lowest



National
Lower than average



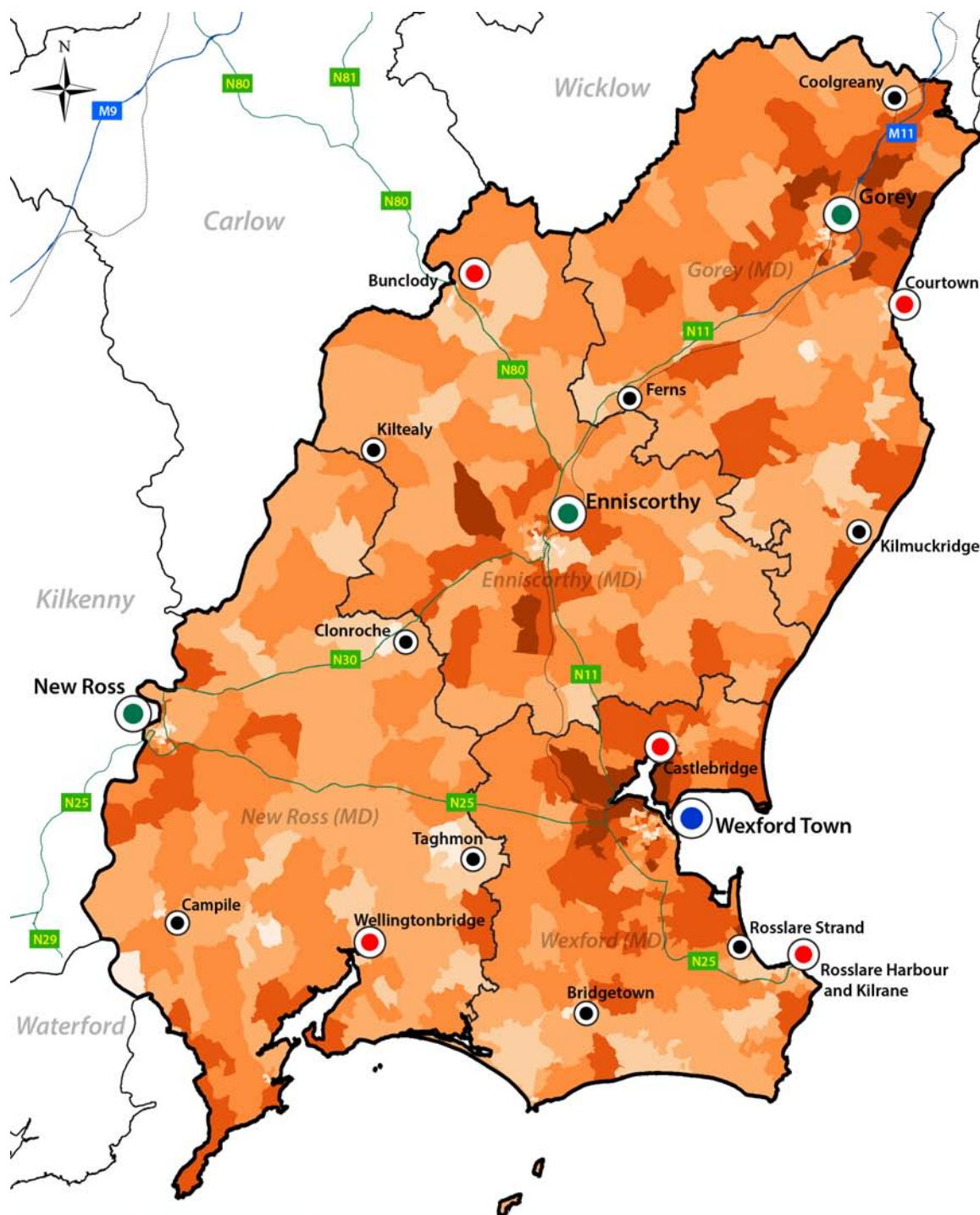
Southern RA
Lower than average

How is Wexford performing?
Number Completed Education

15/31

Local Authority
1 is the highest, 31 is the lowest

- According to 2016 Census, the population (completed education) with All Third Level Education (Lower plus Higher) residing in Wexford was 24,685 and represents 24.5% of the total population aged 15+. This rate is lower than the State (33.4%) Southern RA (30.3%), South-East SPA (27.4%) averages.
- Relative to other local authorities, Wexford has the 15th highest number population with All Third Level education in the State and this is the 4th lowest rate. The highest rates in the State are in DLR (54.7%) and Galway City (46.3%) and the lowest in Offaly (23.9%) and Longford (24.2%). Since 2011, the rate has increased from 20.9% to 24.5% and represents a rise of 4,339 (21.3%).
- At the Municipal District level, there is a considerable variation with highest rates recorded in Wexford MD (26.8%) and Gorey MD (25.6%). In contrast, New Ross MD (22.4%) and Enniscorthy MD (22.5%) have much lower rates. Across the settlement hierarchy the highest rates are recorded in Rosslare Strand (33.2%), Castlebridge (28.4%), Wexford Town (25.9%), Gorey (24.5%) and Kilmuckridge (21.3%).



Education Attainment - All Third Level, 2016



Map 8 Education - All 3rd Level, 2016 (Source: CSO & AIRO)

The map provides an illustration of the rates of the All Third Level Education within and across the Wexford Small Areas (SAs). Highest rates are heavily concentrated in large urban settlements with particularly high rates visible in Wexford Town and Gorey and their respective hinterland areas.

SOCIO-ECONOMIC PROFILE 4 – FIELD OF STUDY

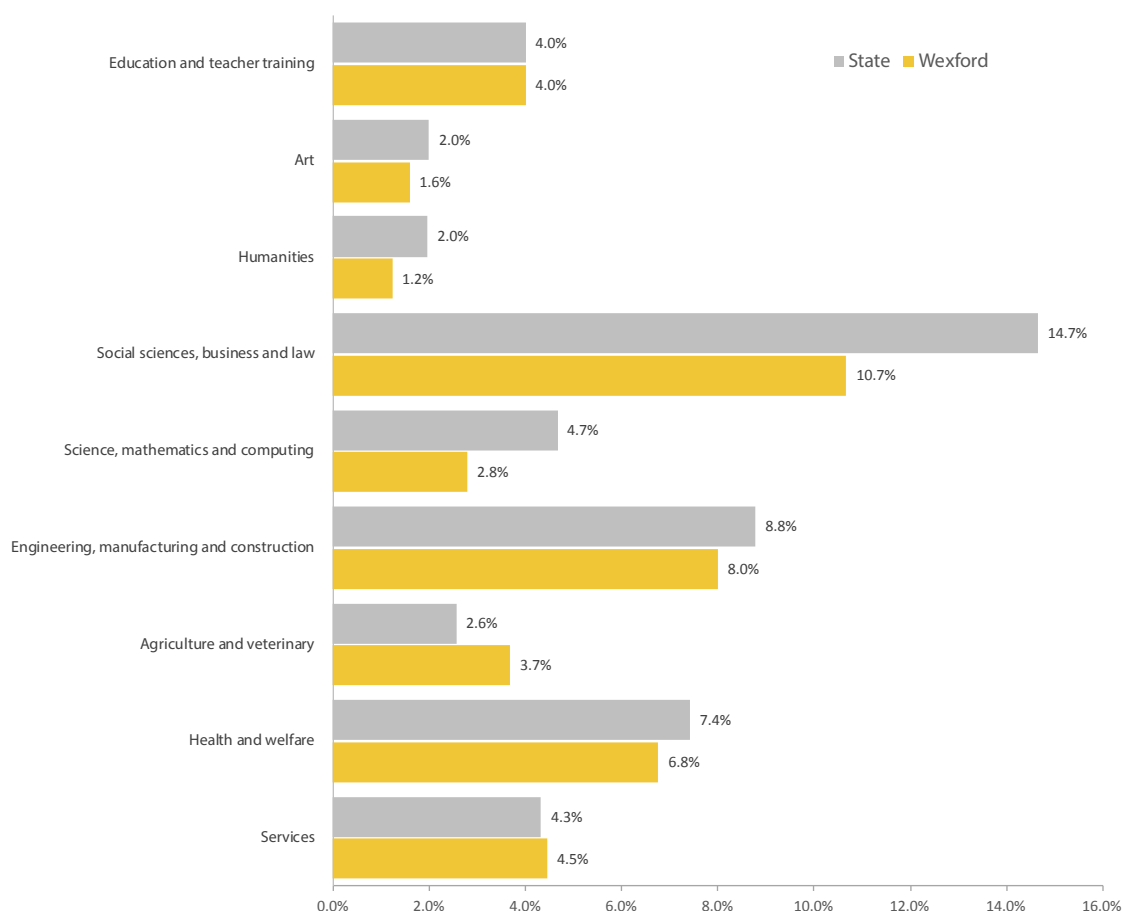


Figure 9: Field of Study Summary, 2016 (Source: CSO & AIRO)

Of the total population aged 15 years and over who had completed their education, a total of 43,623 or 46.3% indicated they had a qualification in a specific set of disciplines (see fig. 9). The Census also records a high number classed as having a qualification in 'Other' subjects and 'Not Stated' - a combined 53.8% in Wexford (49.6% in State). This category is excluded from the above graphic.

The graphic above details the field of study of those with qualifications within Wexford and the State. Field of Study is separated into ten categories: 'Education and Teacher Training', 'Art', 'Humanities', 'Social Science, Business and Law', 'Science', 'Mathematics and Computing, Engineering', 'Manufacturing and Construction', 'Agriculture and Veterinary', 'Health and Welfare', 'Services' and 'Other' which contains all those with qualifications less than Leaving Certificate.

The most popular Field of Study category overall was 'Social Sciences, Business and Law' with 10,743, representing 10.7% of all respondents; this is followed by 'Engineering, Manufacturing and Construction' with 8,054, representing 8% of all respondents.

In both of these categories, while popular, Wexford records rates that are lower than the State average and had the 9th and 4th lowest rates in the State. The two areas where Wexford outperforms the State are 'Agriculture and Veterinary' (3.7%) and 'Services' (4.5%).

A full listing and detailed classification of all courses and qualifications related to each of the ten categories is available in Appendix 9 (page 115) via the following web-link:

<http://www.cso.ie/en/media/csoie/newsevents/documents/census2016summaryresultspart2/Appendices.pdf>

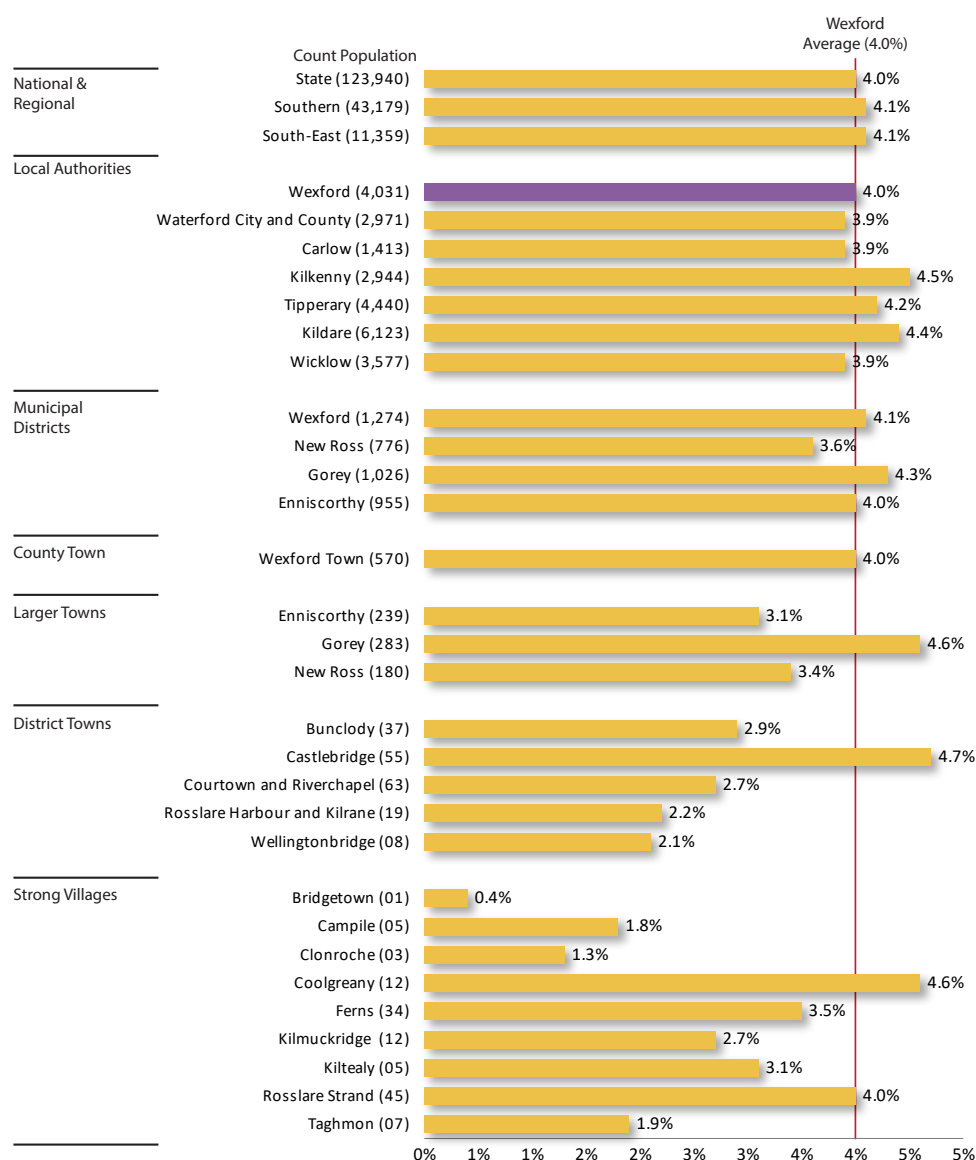


Figure 10: Field of Study - Education and Teacher Training, 2016 (Source: CSO & AIRO)

How is Wexford performing?
% Completed Education

19/31

Local Authority

1 is the highest, 31 is the lowest



National

Higher than Average



Southern RA

Lower than average

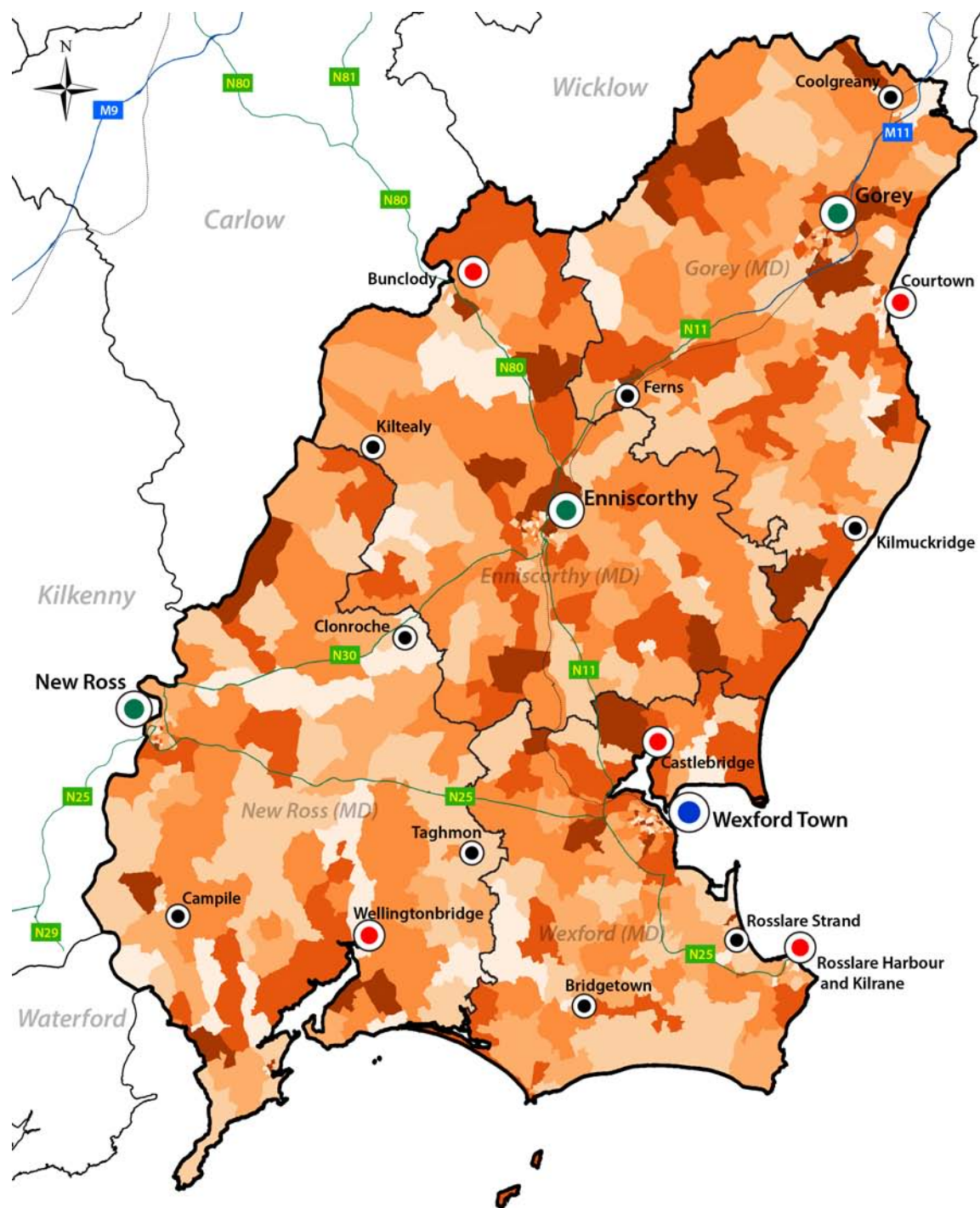
How is Wexford performing?
Number Completed Education

13/31

Local Authority

1 is the highest, 31 is the lowest

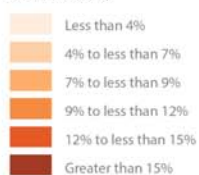
- According to 2016 Census, a total of 4,031 or 4% of the total population aged 15+ (completed education) class their main qualification as being in the field of 'Education and Teacher Training'. This rate is in line with the State (4%) and lower than the Southern RA (4.1%) and South-East SPA (4.1%) averages.
- Relative to other local authorities, Wexford has the 13th highest number and 12th lowest rate of its population qualified in the field of 'Education and Teacher Training'. The highest rates in the State are in Galway County (4.8%) and Galway City (4.7%) and the lowest in Dublin City (3%) and Cork City (3.1%). Since 2011, the rate has increased marginally from 3.7% to 4% and represents a rise of 419 (11.6%).
- At the Municipal District level, a small variation is evident with highest rates recorded in Gorey MD (4.3%) and Wexford MD (4.1%). In contrast, marginally lower rates are found in Enniscorthy MD (4%) and New Ross MD (3.6%). Across the settlement hierarchy the highest rates are recorded in Castlebridge (4.7%), Coolgreany (4.6%), Gorey (4.6%), Rosslare Strand (4%), Wexford Town (4%) and Ferns (3.5%).



Education Field of Study - Education & Teacher Training, 2016

% Field - Education

Small Areas (SAs)



Settlement Hierarchy



Contextual Layers

Wexford
County Council

AIRO

Ordnance Survey Ireland Licence No. 2017/34/CCMA/WexfordCC
 © Ordnance Survey Ireland/Government of Ireland
 Data Source: CSO/AIRO
 Produced by: All-Island Research Observatory (AIRO)

0 3.5 7 14 Km

Map 10: Field of Study - Education and Teacher Training, 2016 (Source: CSO & AIRO)

The map provides an illustration of the rates for 'Education and Teacher Training' within and across the Wexford Small Areas (SAs). In general, there is a varied distribution with the highest rates tending to be in strong proximate to urban settlements. Further concentrations are visible across rural areas located in the north-east of the county.

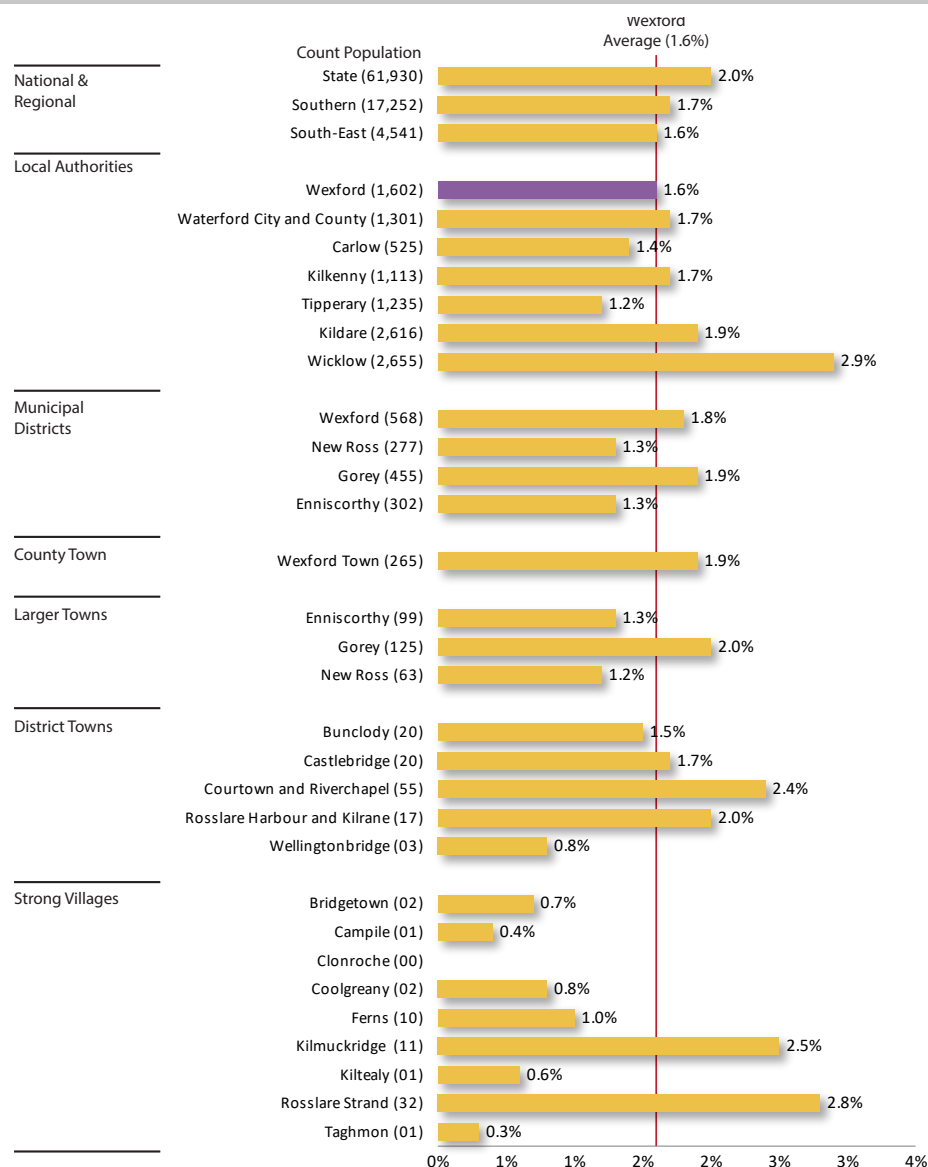


Figure 11: Field of Study - Art, 2016 (Source: CSO & AIRO)

How is Wexford performing?
% Completed Education

17/31

Local Authority
1 is the highest, 31 is the lowest

↓

National
Lower than average

↓

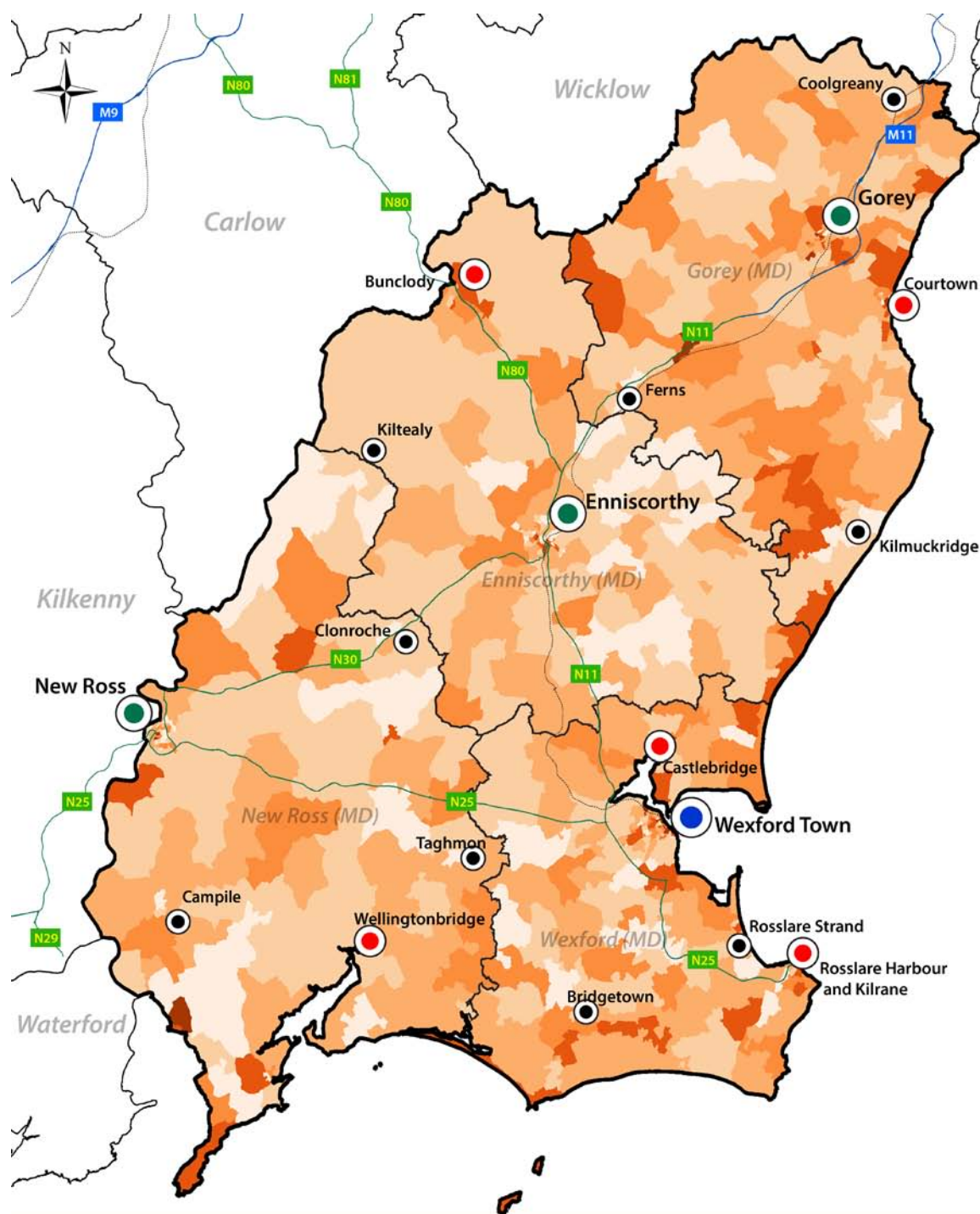
Southern RA
Lower than average

How is Wexford performing?
Number Completed Education

12/31

Local Authority
1 is the highest, 31 is the lowest

- According to 2016 Census, a total of 1,602 or 1.6% of the total population aged 15+ (completed education) class their main qualification as being in the field of 'Art'. This rate is lower than the State (2%) and Southern RA (1.7%) averages and in line with the South-East SPA (1.6%) average.
- Relative to other local authorities, Wexford has the 12th highest number and 17th highest rate of its population qualified in the field of 'Art'. The highest rates in the State are in DLR (3.4%) and Dublin City (3.2%) and the lowest in Longford (1.1%) and Roscommon (1.1%). Since 2011, the rate has increased marginally from 1.5% to 1.6% and represents a rise of 179 (12.6%).
- At the Municipal District level, a small variation is evident with highest rates recorded in Gorey MD (1.9%) and Wexford MD (1.8%). Lower rates are found in Enniscorthy MD (1.3%) and New Ross MD (1.3%). Across the settlement hierarchy the highest rates are recorded in Rosslare Strand (2.8%), Kilmuckridge (2.5%), Courtown and Riverchapel (2.4%), Rosslare Harbour and Kilrane (2%) and Gorey (2%).



Education Field of Study - Art, 2016



Map 11: Field of Study - Arts (Source: CSO & AIRO)

The map provides an illustration of the rates for 'Art' within and across the Wexford Small Areas (SAs). In general, there is a varied distribution with the highest rates visible across urban settlements and rural parts of the county. The highest concentrations are visible in the north-east of the county within the Gorey MD.

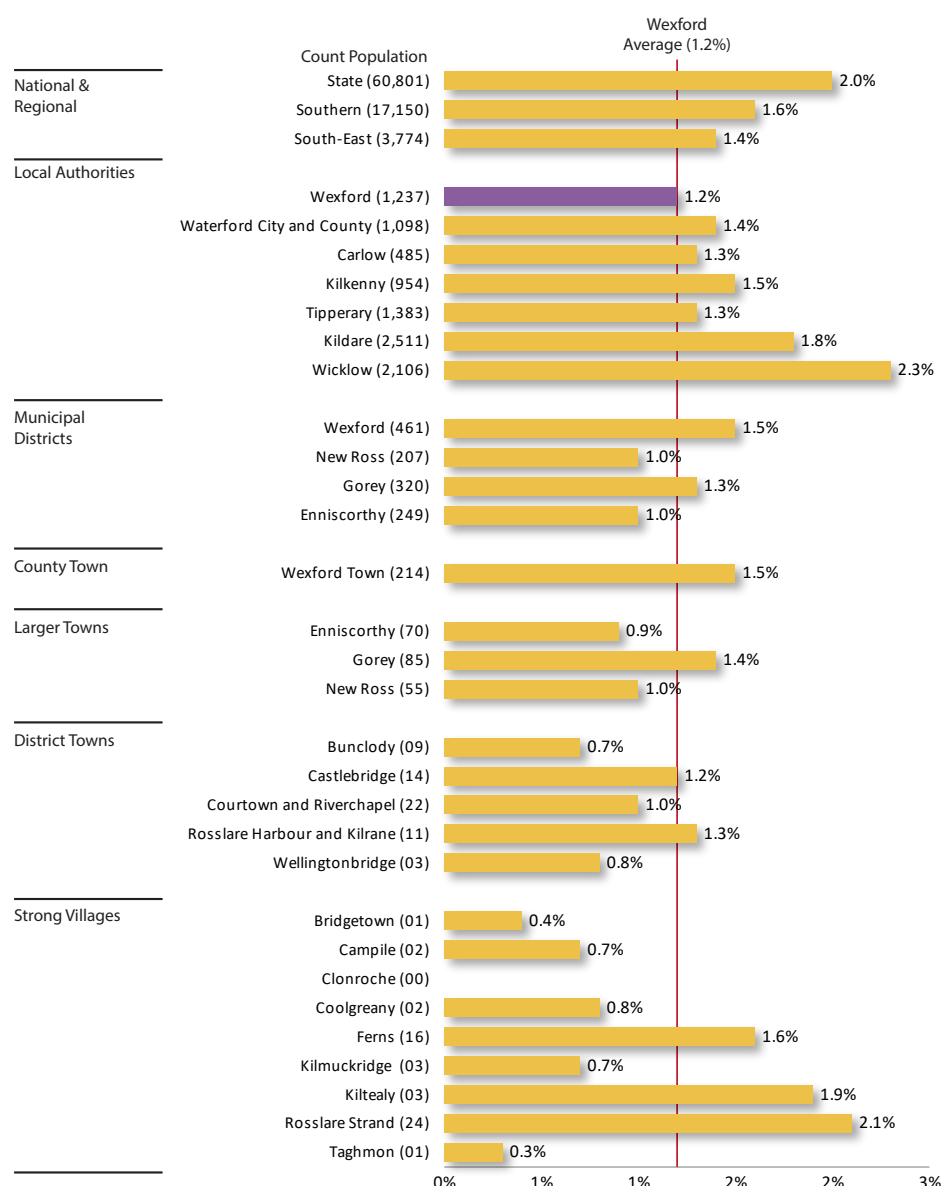


Figure 12: Field of Study - Humanities, 2016 (Source: CSO & AIRO)

How is Wexford performing?
% Completed Education

26/31

Local Authority
1 is the highest, 31 is the lowest



National
Lower than average



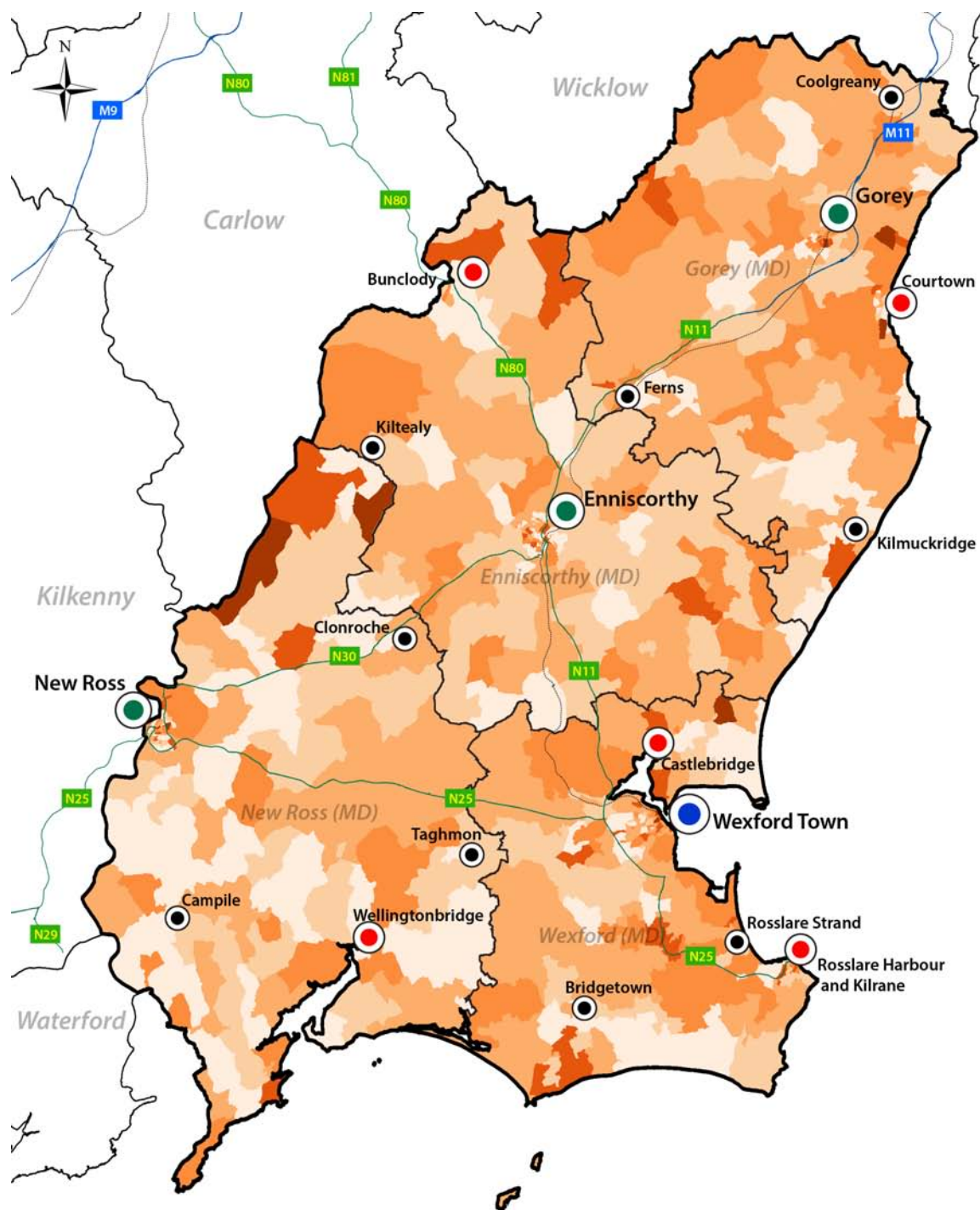
Southern RA
Lower than average

How is Wexford performing?
Number Completed Education

18/31

Local Authority
1 is the highest, 31 is the lowest

- According to 2016 Census, a total of 1,237 or 1.2% of the total population aged 15+ (completed education) class their main qualification as being in the field of 'Humanities'. This rate is lower than the State (2%), Southern RA (1.6%) and South-East SPA (1.4%) averages.
- Relative to other local authorities, Wexford has the 14th lowest number and 6th lowest rate of its population qualified in the field of 'Humanities'. The highest rates in the State are in Galway City (4.1%) and DLR (3.8%) and the lowest in Monaghan (1.1%) and Cavan (1.1%). Since 2011, the rate has marginally increased from 1.1% to 1.2% and represents a rise of 155 (14.3%).
- At the Municipal District level, a small variation is evident with highest rates recorded in Wexford MD (1.5%) and Gorey MD (1.3%). Lower rates are found in New Ross MD (1%) and Enniscorthy MD (1%). Across the settlement hierarchy the highest rates are recorded in Rosslare Strand (2.1%), Kiltealy (1.9%), Ferns (1.6%), Wexford Town (1.5%), Gorey (1.4%) and Rosslare Harbour and Kilrane (1.3%).



Education Field of Study - Humanities, 2016



Map 12: Field of Study - Humanities, 2016 (Source: CSO & AIRO)

The map provides an illustration of the rates for 'Humanities' within and across the Wexford Small Areas (SAs). In general, rates are low in rural areas while higher rates are visible proximate to urban settlements. The highest concentrations are visible in the west and north-east of the county within the Gorey MD.

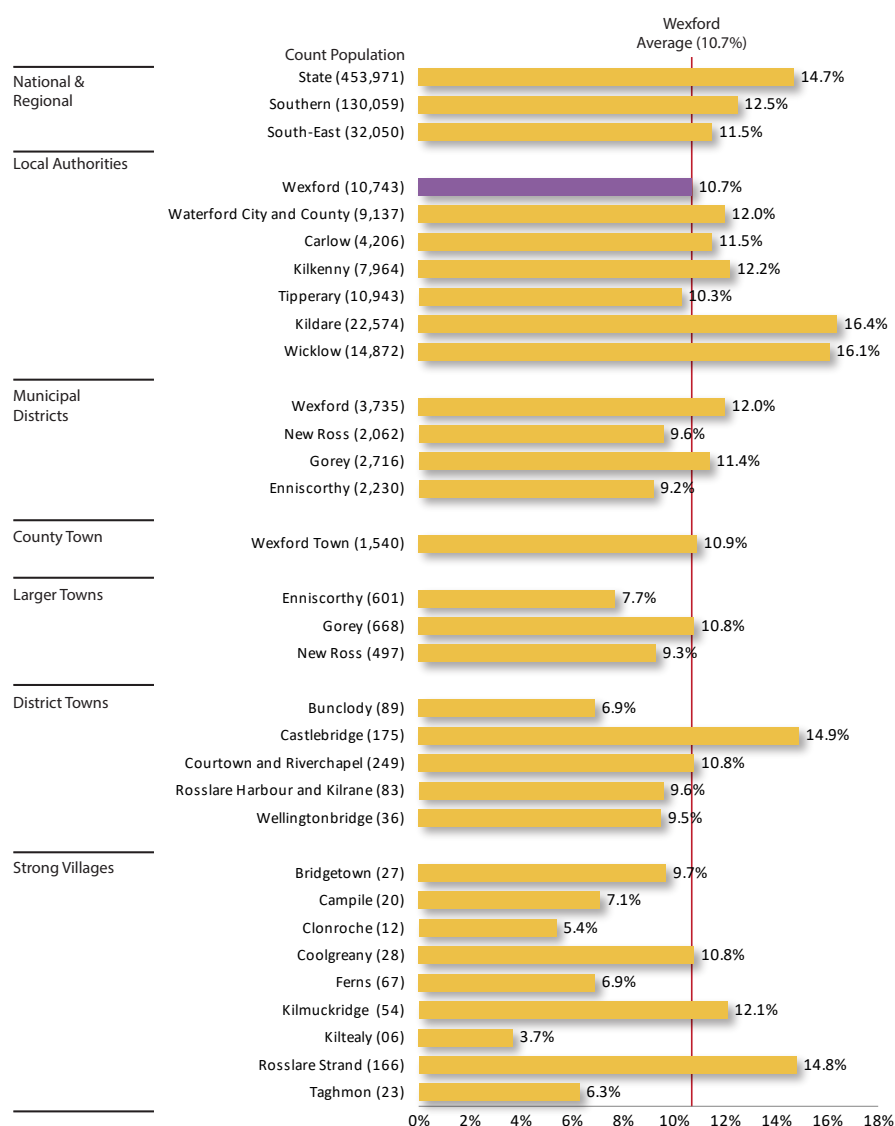


Figure 13: Field of Study - Social Sciences, Business and Law, 2016 (Source: CSO & AIRO)

How is Wexford performing?
% Completed Education

23/31

Local Authority
1 is the highest, 31 is the lowest



National
Lower than average



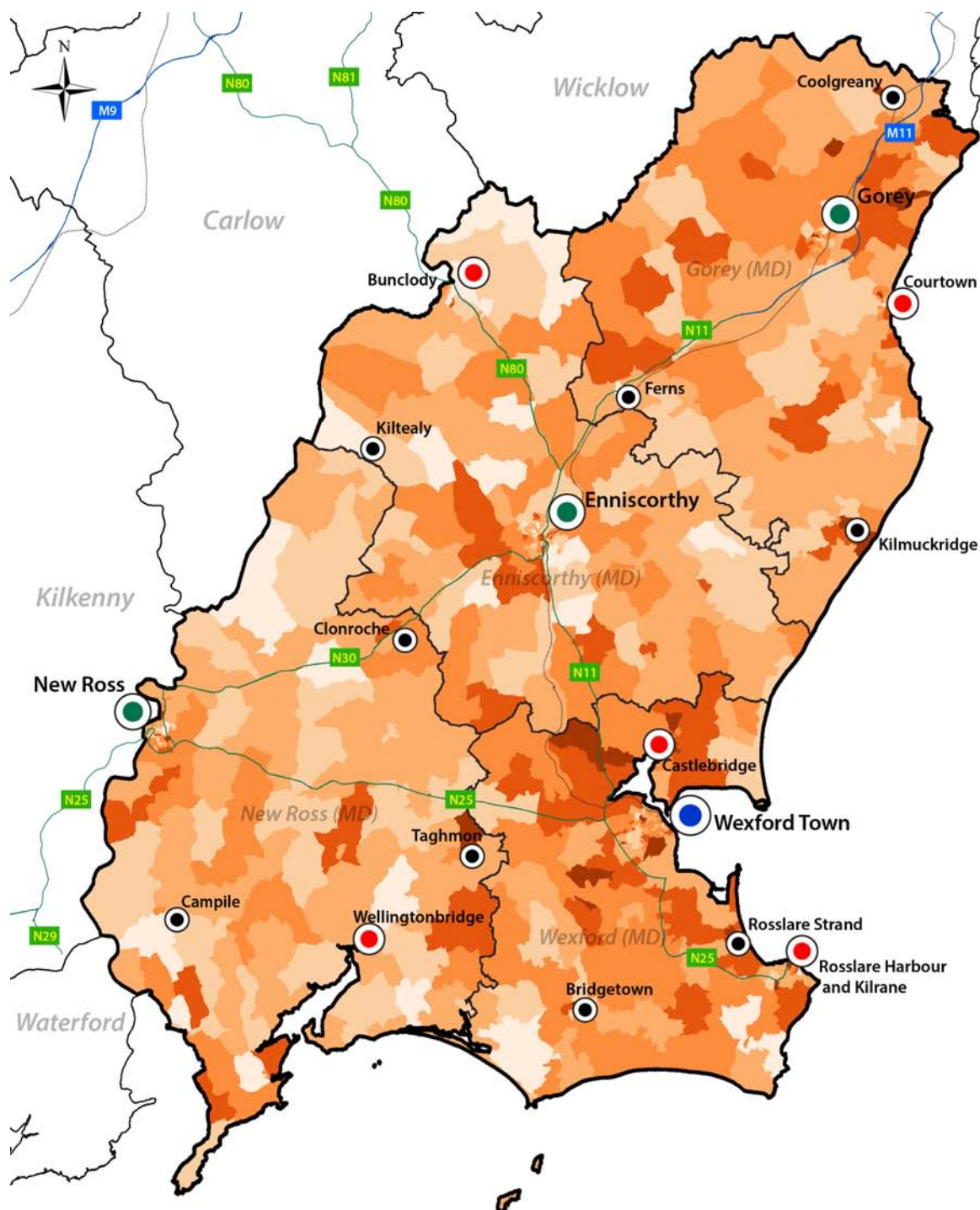
Southern RA
Lower than average

How is Wexford performing?
Number Completed Education

14/31

Local Authority
1 is the highest, 31 is the lowest

- According to 2016 Census, a total of 10,743 or 10.7% of the total population aged 15+ (completed education) class their main qualification as being in the field of 'Social Science, Business and Law'. This rate is lower than the State (14.7%), Southern RA (12.5%) and South-East SPA (11.5%) averages.
- Relative to other local authorities, Wexford has the 14th highest number and 9th lowest rate of its population qualified in the field of 'Social Science, Business and Law'. The highest rates in the State are in DLR (27.9%) and Fingal (19.6%) and the lowest in Donegal (9.7%) and Longford (9.6%). Since 2011, the rate has increased from 10.1% to 10.7% and represents a rise of 943 (9.6%).
- At the Municipal District level, a considerable variation is evident with highest rates recorded in Wexford MD (12%) and Gorey MD (11.4%). In contrast, much lower rates found in New Ross MD (9.6%) and Enniscorthy MD (9.2%). Across the settlement hierarchy the highest rates are recorded in Castlebridge (14.9%), Rosslare Strand (14.8%), Kilmuckridge (12.1%), Wexford Town (10.9%), Gorey (10.8%), Coolgreany (10.8%) and Courtown and Riverchapel (10.8%).



Education Field of Study - Social Science, Business and Law, 2016



Map 13: Field of Study - Social Sciences, Business and Law, 2016 (Source: CSO & AIRO)

■ The map provides an illustration of the rates for 'Social Sciences, Business and Law' within and across the Wexford Small Areas (SAs). Highest rates are heavily concentrated in large urban settlements with particularly high rates visible in Wexford Town, Gorey and their hinterland areas.

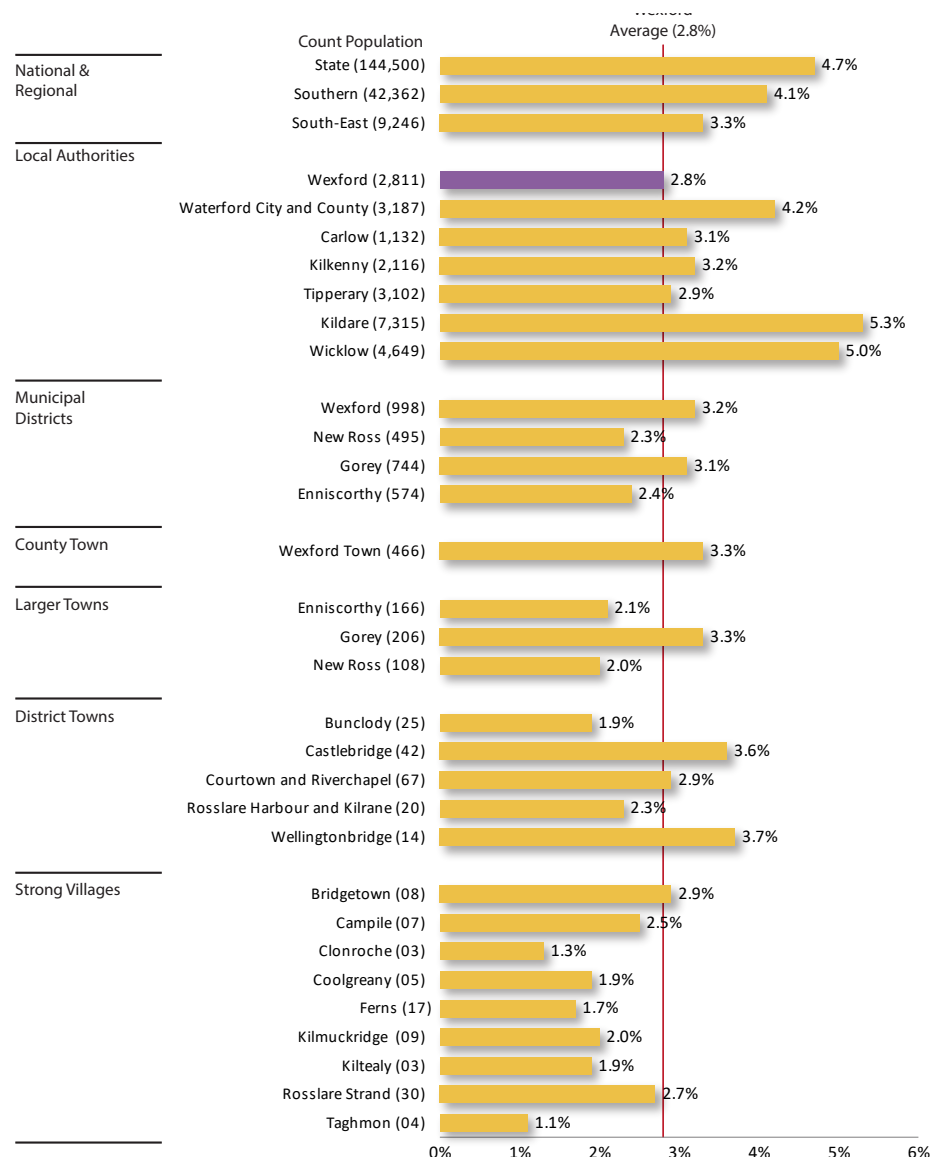


Figure 14: Field of Study - Science, Mathematics and Computing, 2016 (Source: CSO & AIRO)

How is Wexford performing?
% Completed Education

29/31

Local Authority
1 is the highest, 31 is the lowest



National
Lower than average



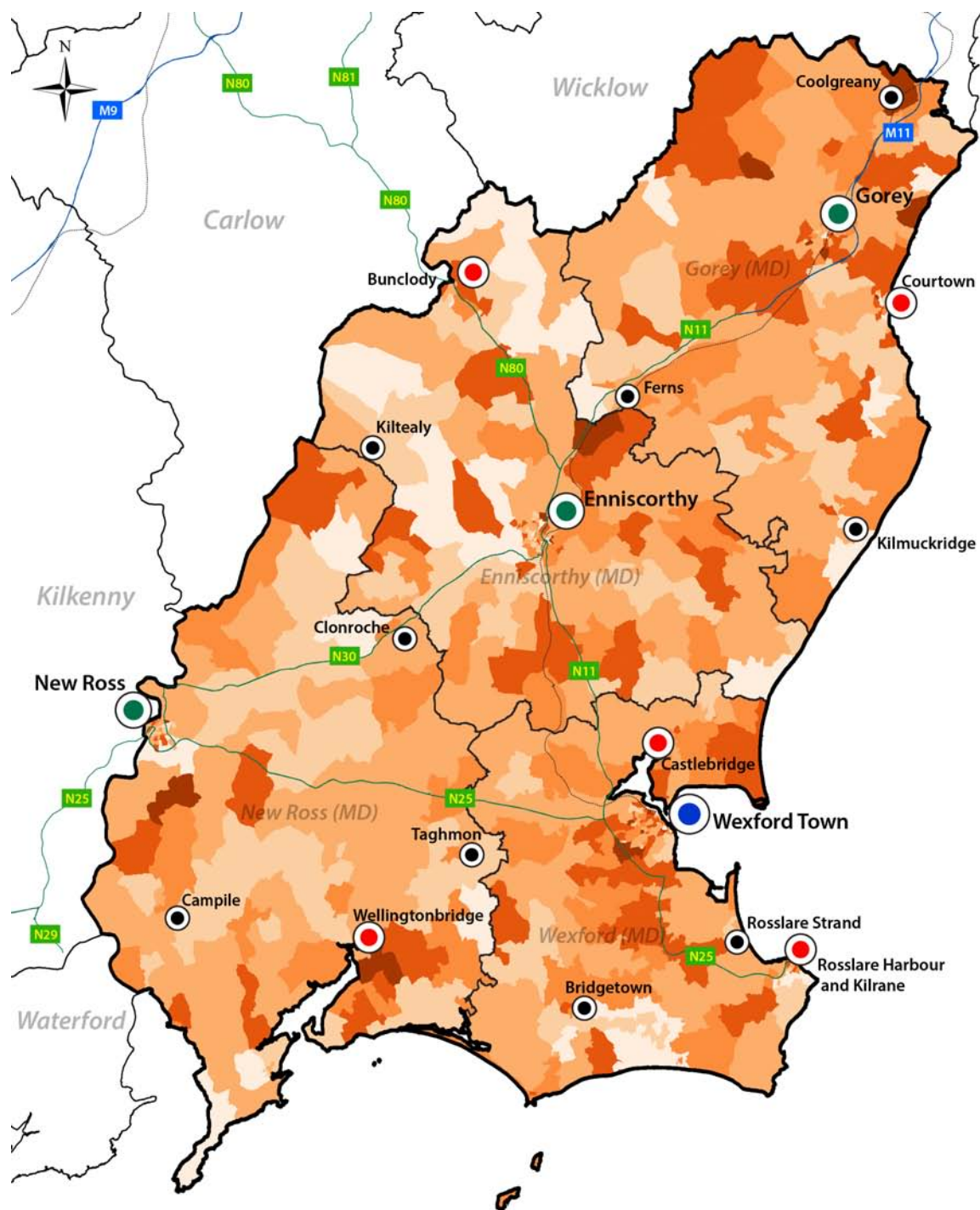
Southern RA
Lower than average

How is Wexford performing?
Number Completed Education

20/31

Local Authority
1 is the highest, 31 is the lowest

- According to 2016 Census, a total of 2,811 or 2.8% of the total population aged 15+ (completed education) class their main qualification as being in the field of 'Science Mathematics and Computing'. This rate is lower than the State (4.7%), Southern RA (4.1%) and South-East SPA (3.3%) averages.
- Relative to other local authorities, Wexford has the 12th lowest number and 3rd lowest rate of its population qualified in the field of 'Science Mathematics and Computing'. The highest rates in the State are in Galway (7.7%) and DLR (7.7%) and the lowest in Monaghan (2.7%) and Offaly (2.7%). Since 2011, the rate has decreased from 3% to 2.8% and represents a drop of 64 (-2.2%).
- At the Municipal District level, a considerable variation is evident with highest rates recorded in Wexford MD (3.2%) and Gorey MD (3.1%). In contrast, lower rates are found in Enniscorthy MD (2.4%) and New Ross MD (2.3%). Across the settlement hierarchy the highest rates are recorded in Wellingtonbridge (3.7%), Castlebridge (3.6%), Wexford Town (3.3%), Gorey (3.3%), Bridgetown (2.9%) and Courtown and Riverchapel (2.9%).



Education Field of Study - Science, Maths and Computing, 2016



Map 14: Field of Study - Science, Mathematics and Computing, 2016 (Source: CSO & AIRO)

The map provides an illustration of the rates for 'Science, Mathematics and Computing' within and across the Wexford Small Areas (SAs). Highest rates are heavily concentrated in large urban settlements with particularly high rates visible in Wexford Town, Gorey and Enniscorthy and their hinterland areas.

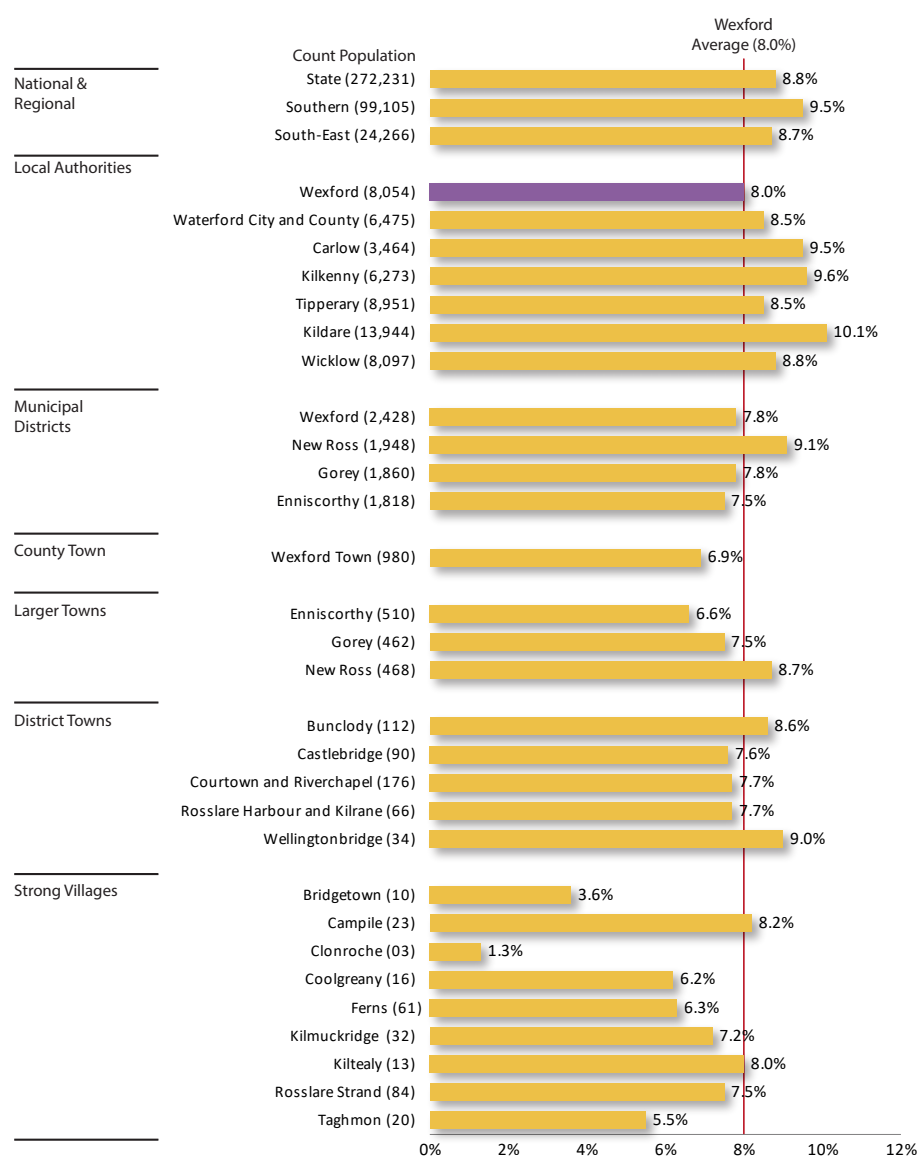


Figure 15: Field of Study - Engineering, Manufacturing and Construction, 2016
(Source: CSO & AIRO)

How is Wexford performing?
% Completed Education

28/31

Local Authority
1 is the highest, 31 is the lowest



National
Lower than average



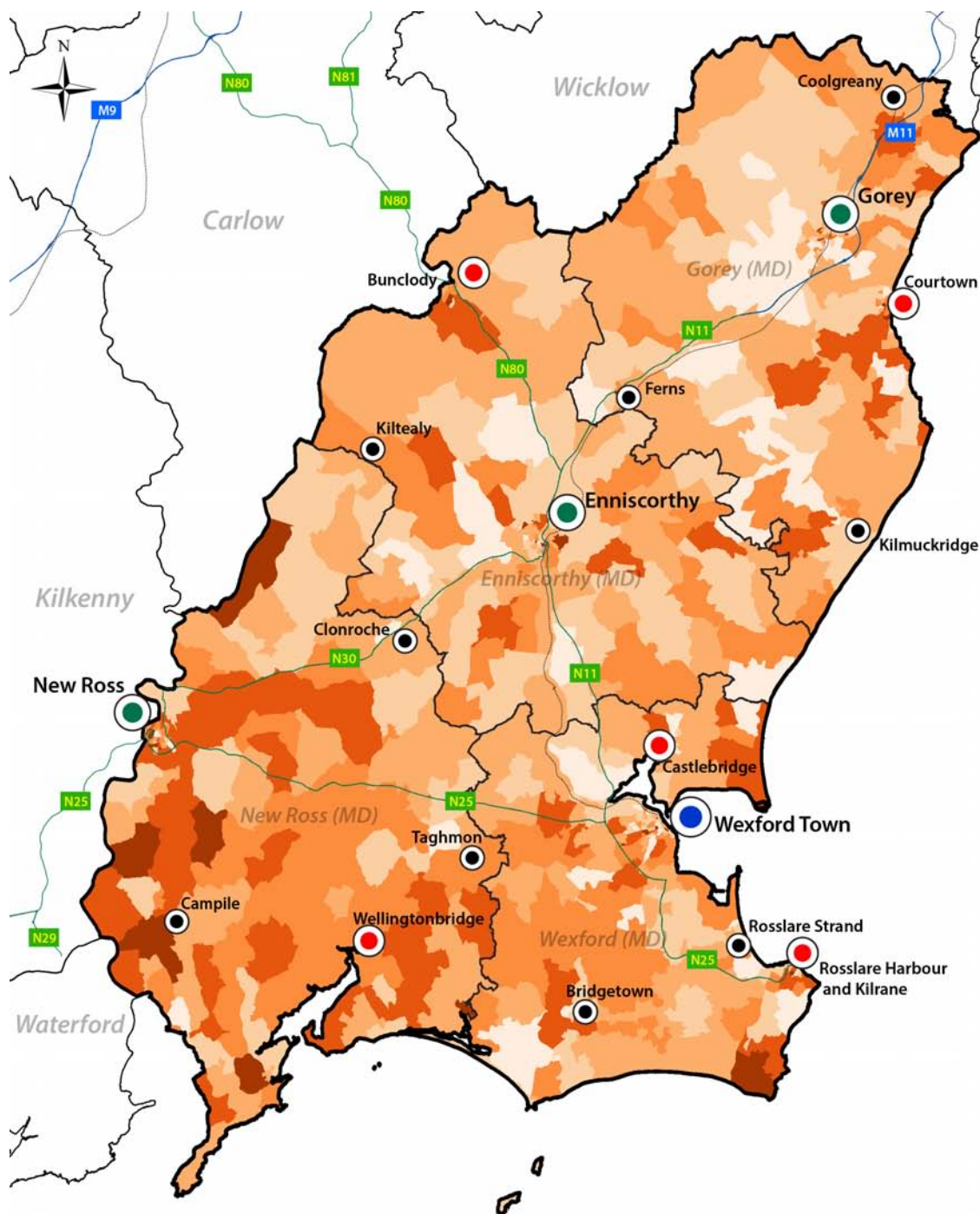
Southern RA
Lower than average

How is Wexford performing?
Number Completed Education

13/31

Local Authority
1 is the highest, 31 is the lowest

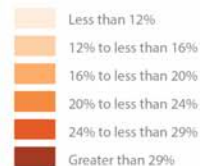
- According to 2016 Census, a total of 8,054 or 8% of the total population aged 15+ (completed education) class their main qualification as being in the field of 'Engineering, Manufacturing and Construction'. This rate is lower than the State (8.8%), Southern RA (9.5%) and South-East RA (8.7%) averages.
- Relative to other local authorities, Wexford has the 13th highest number and 4th lowest rate of its population qualified in the field of 'Engineering, Manufacturing and Construction'. The highest rates in the State are in Cork County (11.2%) and Kildare (10.1%) and the lowest in Dublin City (6.6%) and Donegal (7%). Since 2011, the rate has marginally decreased from 8.8% to 8% and represents a drop of 508 (-5.9%).
- At the Municipal District level, a considerable variation is evident with the highest rate recorded in New Ross MD (9.1%). In contrast, lower rates are found in Wexford MD (7.8%), Gorey MD (7.8%) and Enniscorthy MD (7.5%). Across the settlement hierarchy the highest rates are recorded in Wellingtonbridge (9%), New Ross (8.7%), Bunclody (8.6%) and Campile (8.2%).



Education Field of Study - Engineering, Manufacturing and Construction, 2016

% Field - Eng, Manu, Cons

Small Areas (SAs)



Settlement Hierarchy

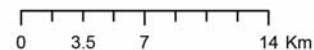


Contextual Layers

Wexford
County Council

AIRO

Ordnance Survey Ireland Licence No. 2017/34/CCMA/WexfordCC
 © Ordnance Survey Ireland/Government of Ireland
 Data Source: CSO/AIRO
 Produced by: All-Island Research Observatory (AIRO)



Map 15: Field of Study - Engineering, Manufacturing and Construction (Source: CSO & AIRO)

The map provides an illustration of the rates for 'Engineering Manufacturing and Construction' within and across the Wexford Small Areas (SAs). In general, there is a varied distribution with the highest rates tending to be strong in rural areas and mixed in urban settlements. The highest concentrations are visible to the south-west of the county within the New Ross MD.

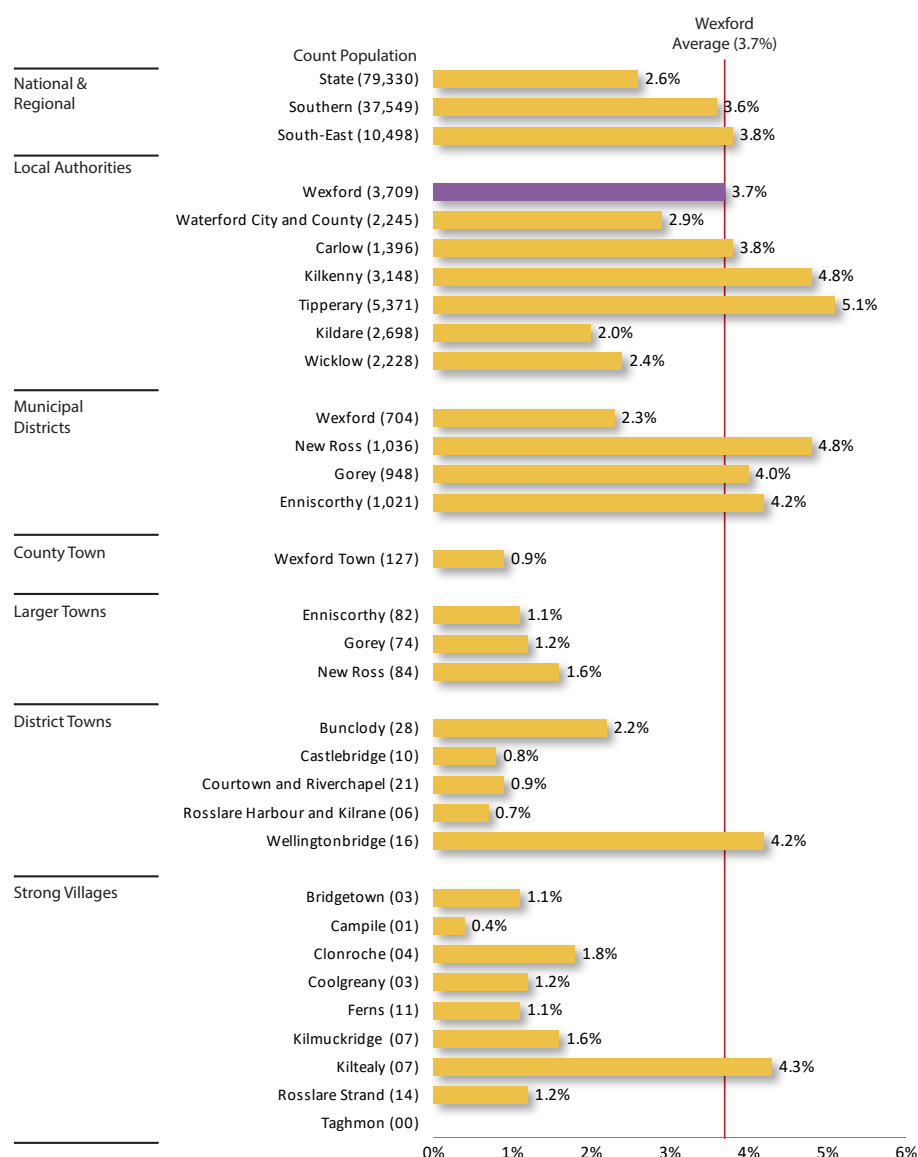


Figure 16: Field of Study - Agriculture and Veterinary, 2016 (Source: CSO & AIRO)

How is Wexford performing?
% Completed Education

16/31

Local Authority
1 is the highest, 31 is the lowest



National
Higher than Average



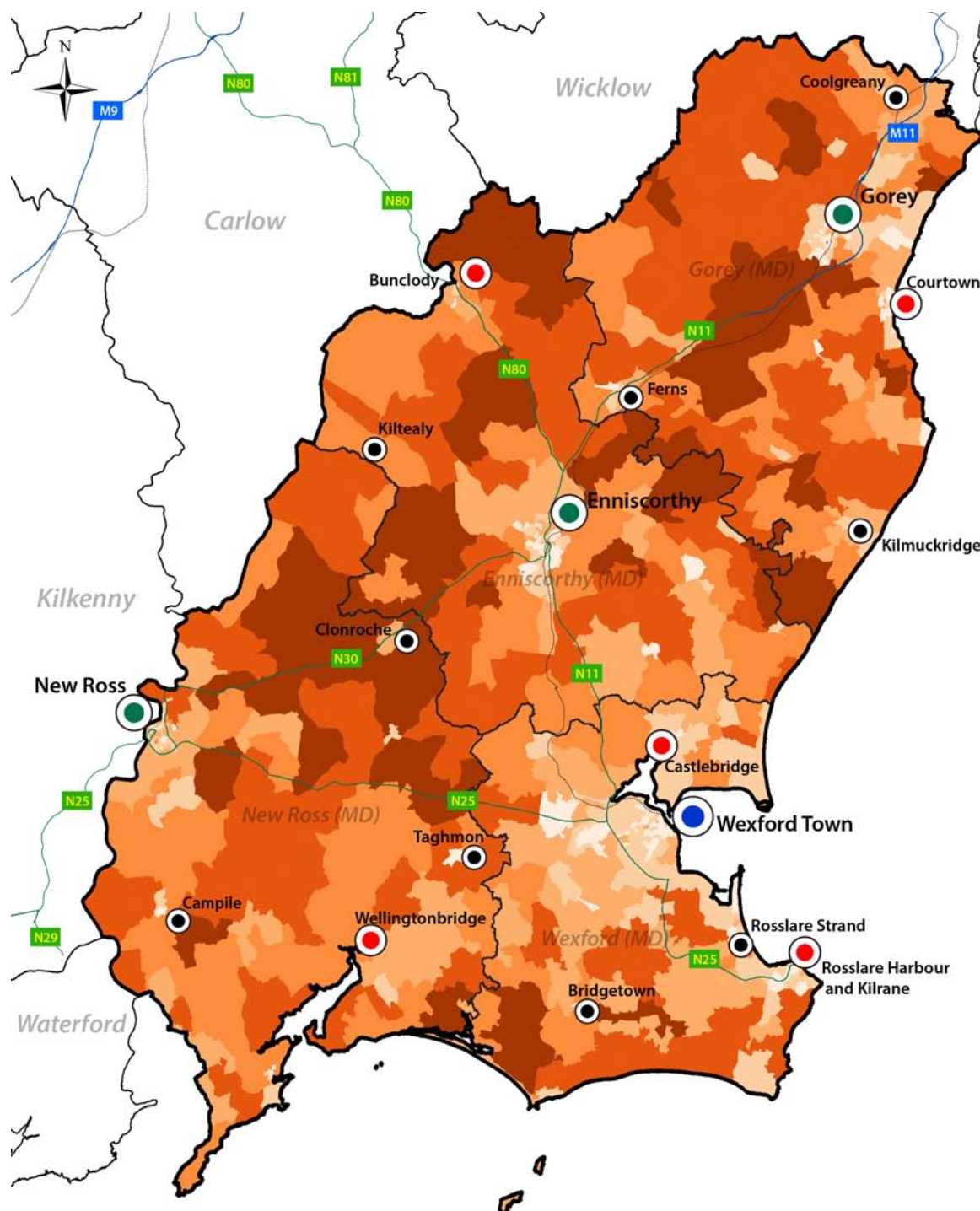
Southern RA
Higher than Average

How is Wexford performing?
Number Completed Education

5/31

Local Authority
1 is the highest, 31 is the lowest

- According to 2016 Census, a total of 3,709 or 3.7% of the total population aged 15+ (completed education) class their main qualification as being in the field of 'Agriculture and Veterinary'. This rate is higher than the State (2.6%), Southern RA (3.6%) averages and lower than the South-East SPA (3.8%) average.
- Relative to other local authorities, Wexford has the 5th highest number and 16th highest rate of its population qualified in the field of 'Agriculture and Veterinary'. The highest rates in the State are in Tipperary (5.1%) and Leitrim (5%) and the lowest in Dublin City (0.4%) and South Dublin (0.5%). Since 2011, the rate has marginally decreased from 3.9% to 3.7% and represents a drop of 82 (-2.2%).
- At the Municipal District level, a considerable variation is evident with the highest rates recorded in New Ross MD (4.8%), Enniscorthy MD (4.2%) and Gorey MD (4%). In contrast, a much lower rate is found in Wexford MD (2.3%). Across the settlement hierarchy, rates are low in comparison to rural Wexford with highest rates recorded in Kiltealy (4.3%), Wellingtonbridge (4.2%) Bunclody (2.2%), Clonroche (1.8%), and New Ross (1.6%).



Education Field of Study - Agriculture and Veterinary, 2016



Map 16: Field of Study - Agriculture and Veterinary, 2016 (Source: CSO & AIRO)

The map provides an illustration of the rates for 'Agriculture and Veterinary' within and across the Wexford Small Areas (SAs). There is a concentrated distribution of high rates in rural areas with the highest rates visible across the west and middle of the county.

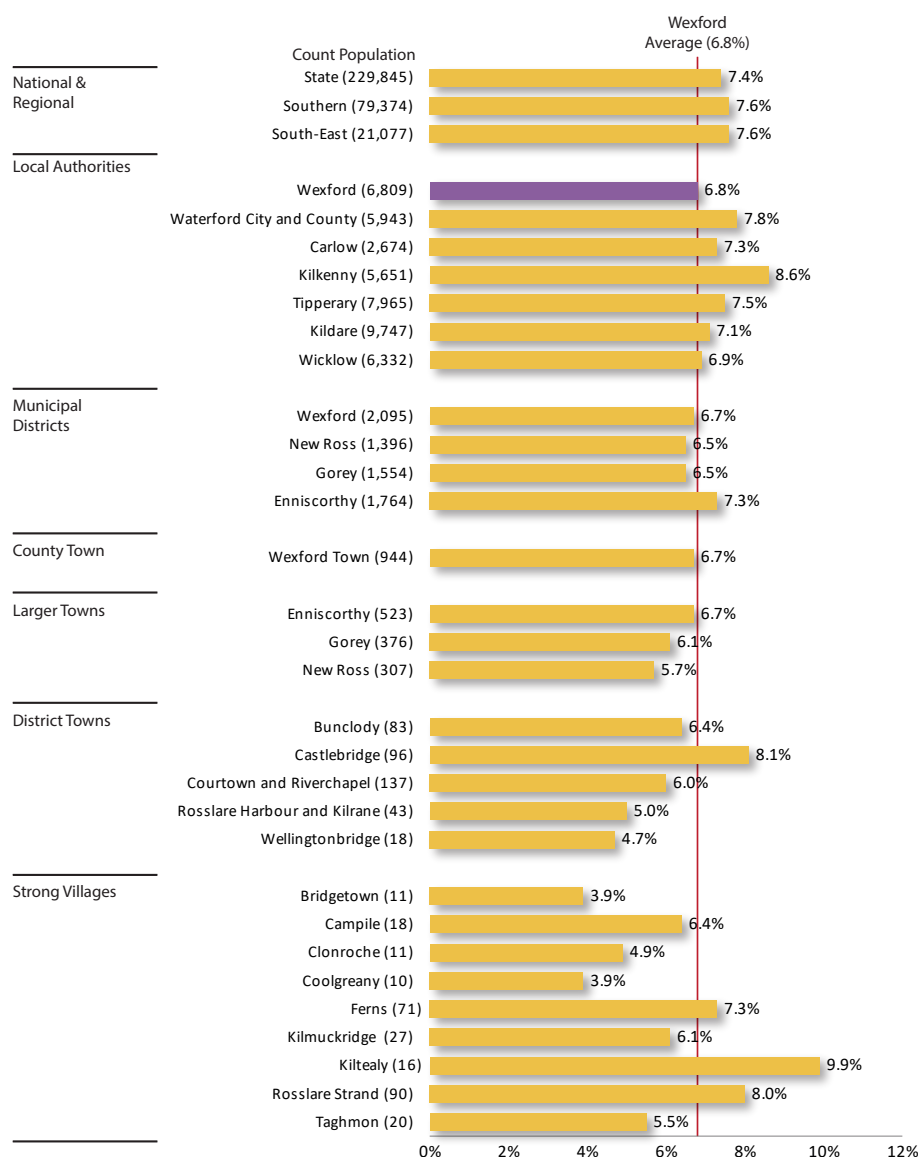


Figure 17: Field of Study - Health and Welfare, 2016 (Source: CSO & AIRO)

How is Wexford performing?
% Completed Education

29/31

Local Authority
1 is the highest, 31 is the lowest



National
Lower than average



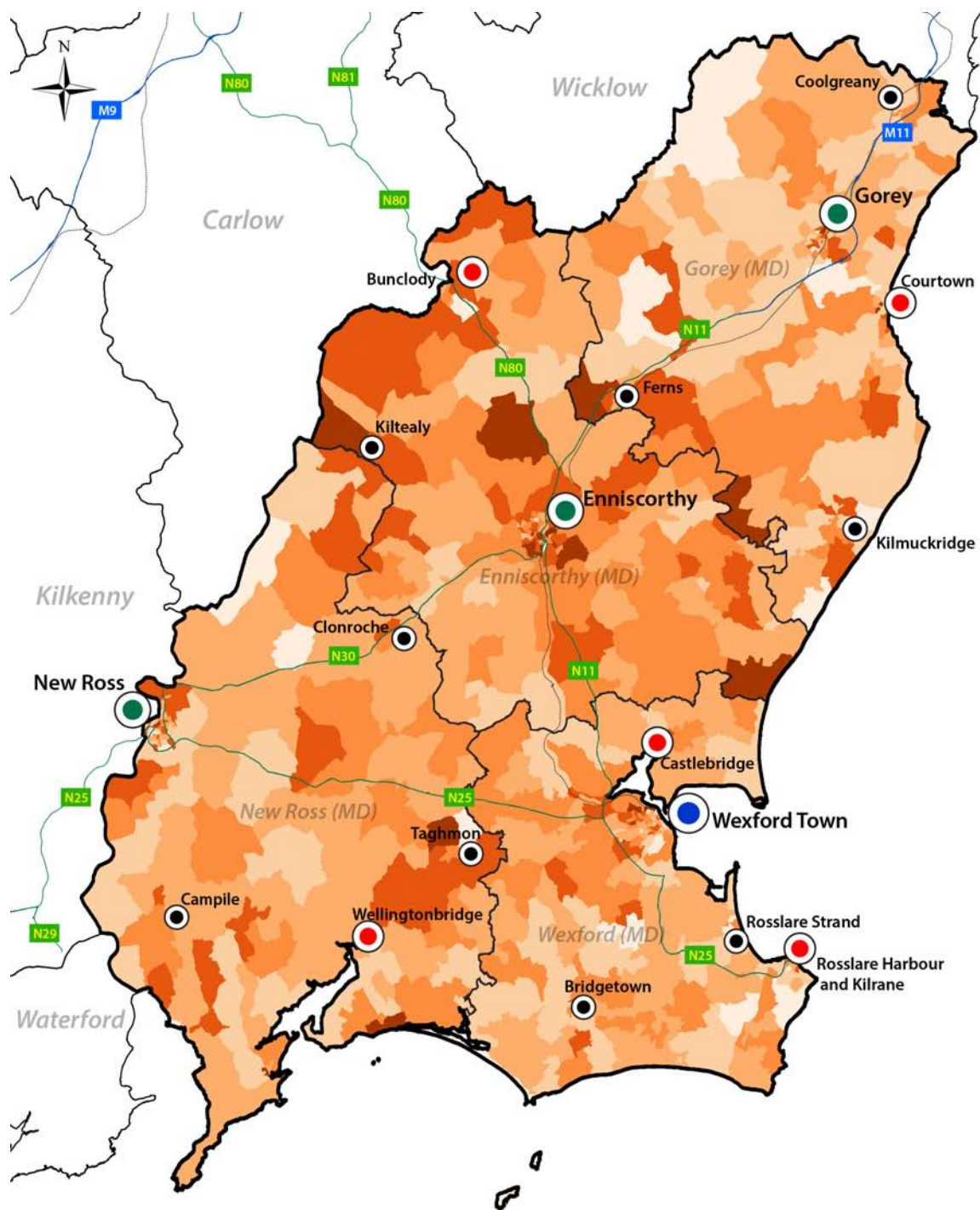
Southern RA
Lower than average

How is Wexford performing?
Number Completed Education

14/31

Local Authority
1 is the highest, 31 is the lowest

- According to 2016 Census, a total of 6,809 or 6.8% of the total population aged 15+ (completed education) class their main qualification as being in the field of 'Health and Welfare'. This rate is lower than the State (7.4%), Southern RA (7.6%) and South-East SPA (7.6%) averages.
- Relative to other local authorities, Wexford has the 14th highest number and 3rd lowest rate of its population qualified in the field of 'Health and Welfare'. The highest rates in the State are in Sligo (9.8%) and Galway City (9.4%) and the lowest in Dublin City (6.2%) and South Dublin (6.7%). Since 2011, the rate has increased from 6.1% to 6.8% and represents a rise of 882 (14.9%).
- At the Municipal District level, a small variation is evident with highest rate recorded in Enniscorthy MD (7.3%). In contrast, lower rates are found in Wexford MD (6.7%), New Ross MD (6.5%) and Gorey MD (6.5%). Across the settlement hierarchy the highest rates are recorded in Kiltealy (9.9%), Castlebridge (8.1%), Rosslare Strand (8%), Ferns (7.3%), Enniscorthy (6.7%) and Wexford Town (6.7%).



Education Field of Study - Health and Welfare, 2016



Map 17: Field of Study - Health and Welfare, 2016 (Source: CSO & AIRO)

The map provides an illustration of the rates for 'Health and Welfare' within and across the Wexford Small Areas (SAs). In general, there is a varied distribution with the highest rates found across rural areas and urban settlements. A concentration of the high rates is visible across the middle of the county within the Enniscorthy MD.

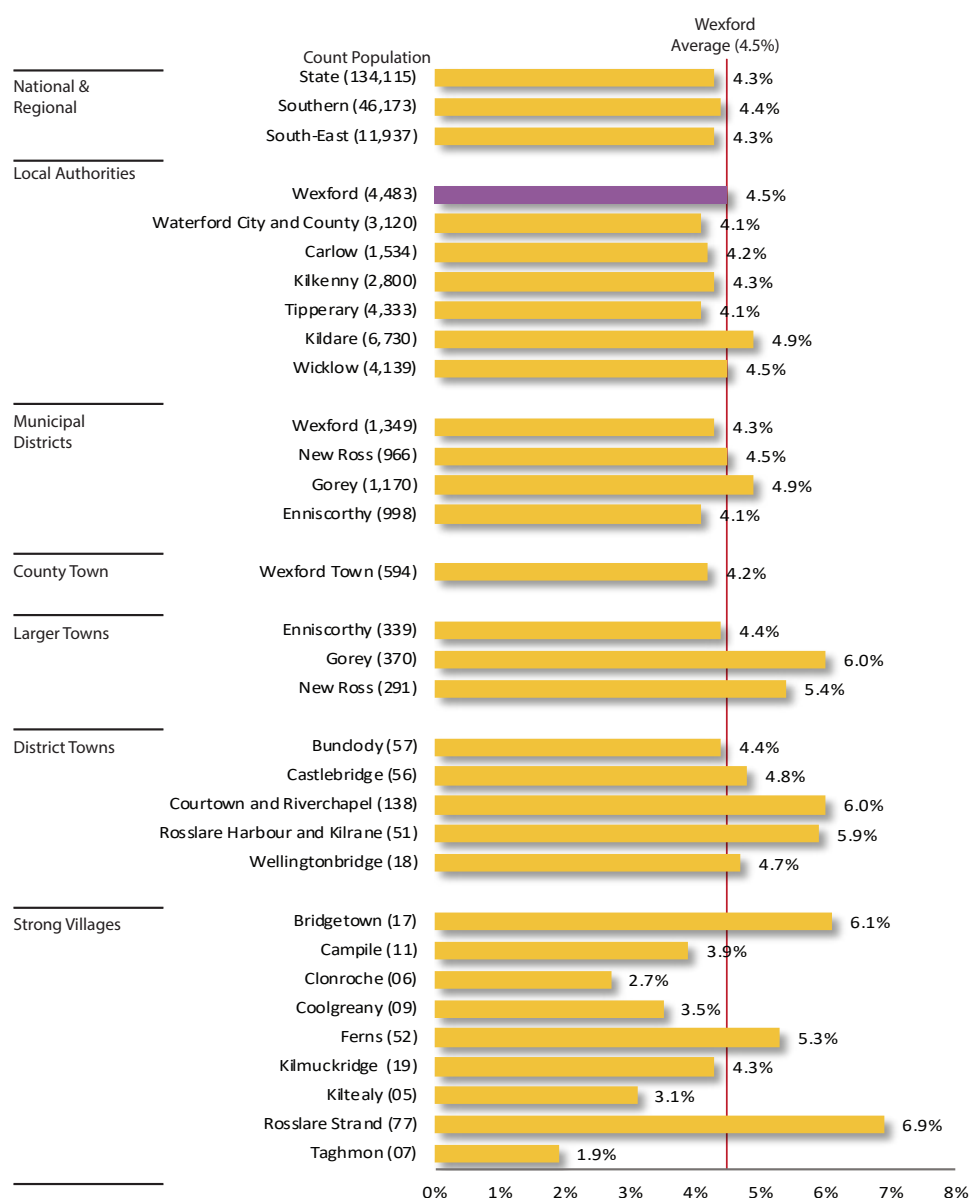


Figure 18: Field of Study - Services, 2016 (Source: CSO & AIRO)

How is Wexford performing?
% Completed Education

13/31

Local Authority
1 is the highest, 31 is the lowest

↑

National
Higher than Average

↑

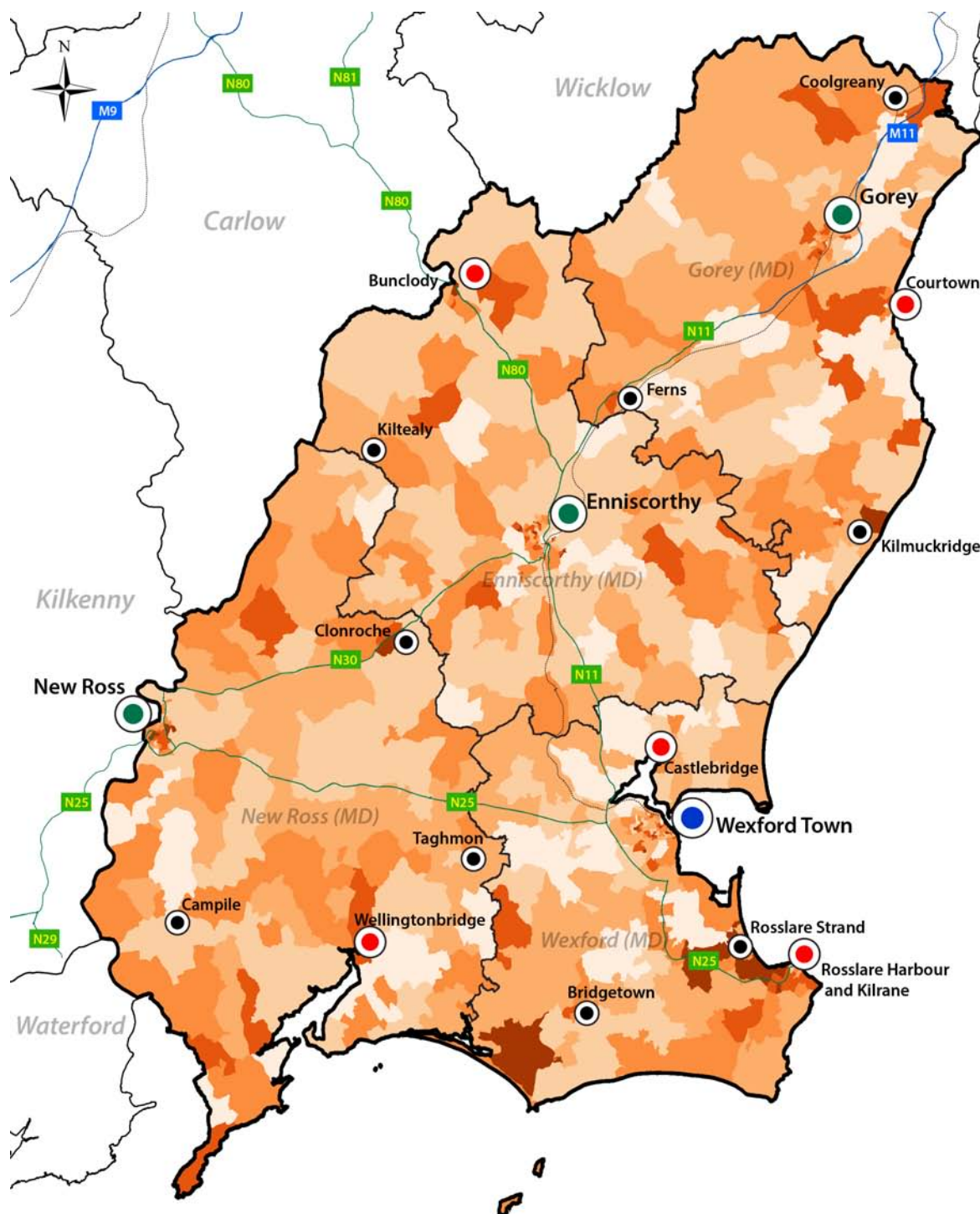
Southern RA
Higher than Average

How is Wexford performing?
Number Completed Education

12/31

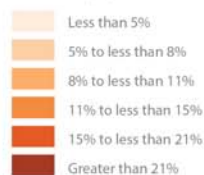
Local Authority
1 is the highest, 31 is the lowest

- According to 2016 Census, a total of 4,483 or 4.5% of the total population aged 15+ (completed education) class their main qualification as being in the field of 'Services'. This rate is higher than the State (4.3%), Southern RA (4.4%) and South-East SPA (4.3%) averages.
- Relative to other local authorities, Wexford has the 12th highest number and 13th highest rate of its population qualified in the field of 'Services'. The highest rates in the State are in Meath (5.1%) and Fingal (5.1%) and the lowest in Dublin City (3.3%) and DLR (3.4%). Since 2011, the rate has increased from 4.3% to 4.5% and represents a rise of 269 (6.4%).
- At the Municipal District level, a considerable variation is evident with the highest rates recorded in Gorey MD (4.9%), followed by New Ross MD (4.5%), and Wexford MD (4.3%). The lowest rate is found in Enniscorthy MD (4.1%). Across the settlement hierarchy the highest rates recorded are Rosslare Strand (6.9%), Bridgetown (6.1%), Courtown and Riverchapel (6%), Gorey (6%), Rosslare Harbour and Kilrane (5.9%) and New Ross (5.4%).



Education Field of Study - Services, 2016

% Field - Services
Small Areas (SAs)



Settlement Hierarchy



Contextual Layers

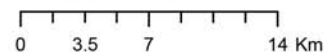


Wexford
County Council



AIRO

Ordnance Survey Ireland Licence No. 2017/34/CCMA/WexfordCC
© Ordnance Survey Ireland/Government of Ireland
Data Source: CSO/AIRO
Produced by: All-Ireland Research Observatory (AIRO)



Map 18: Field of Study - Services, 2016 (Source: CSO & AIRO)

The map provides an illustration of the rates for Services within and across the Wexford Small Areas (SAs). In general, there is an even distribution throughout the county with a mixture of high rates found across rural areas and urban settlements.

