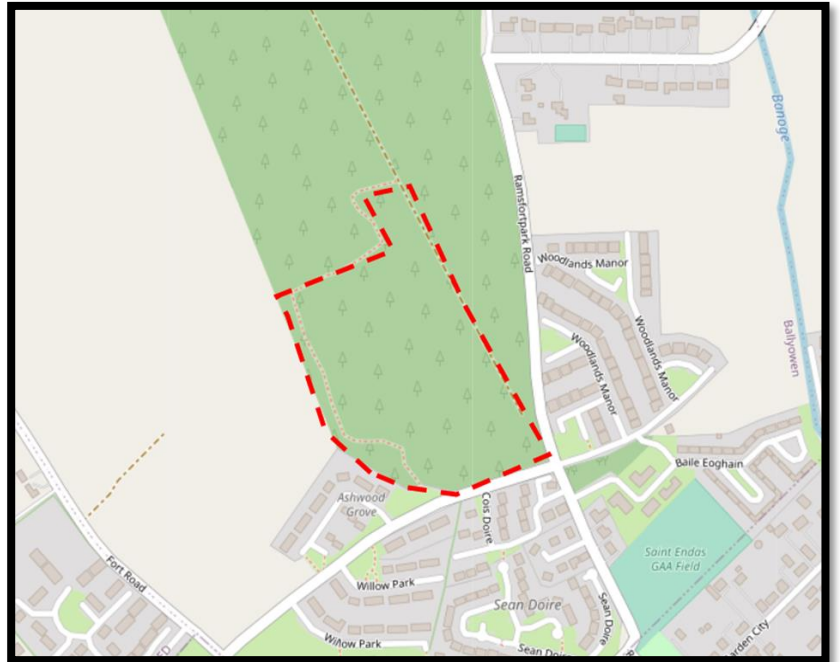


# Ramsfort Walking Trail

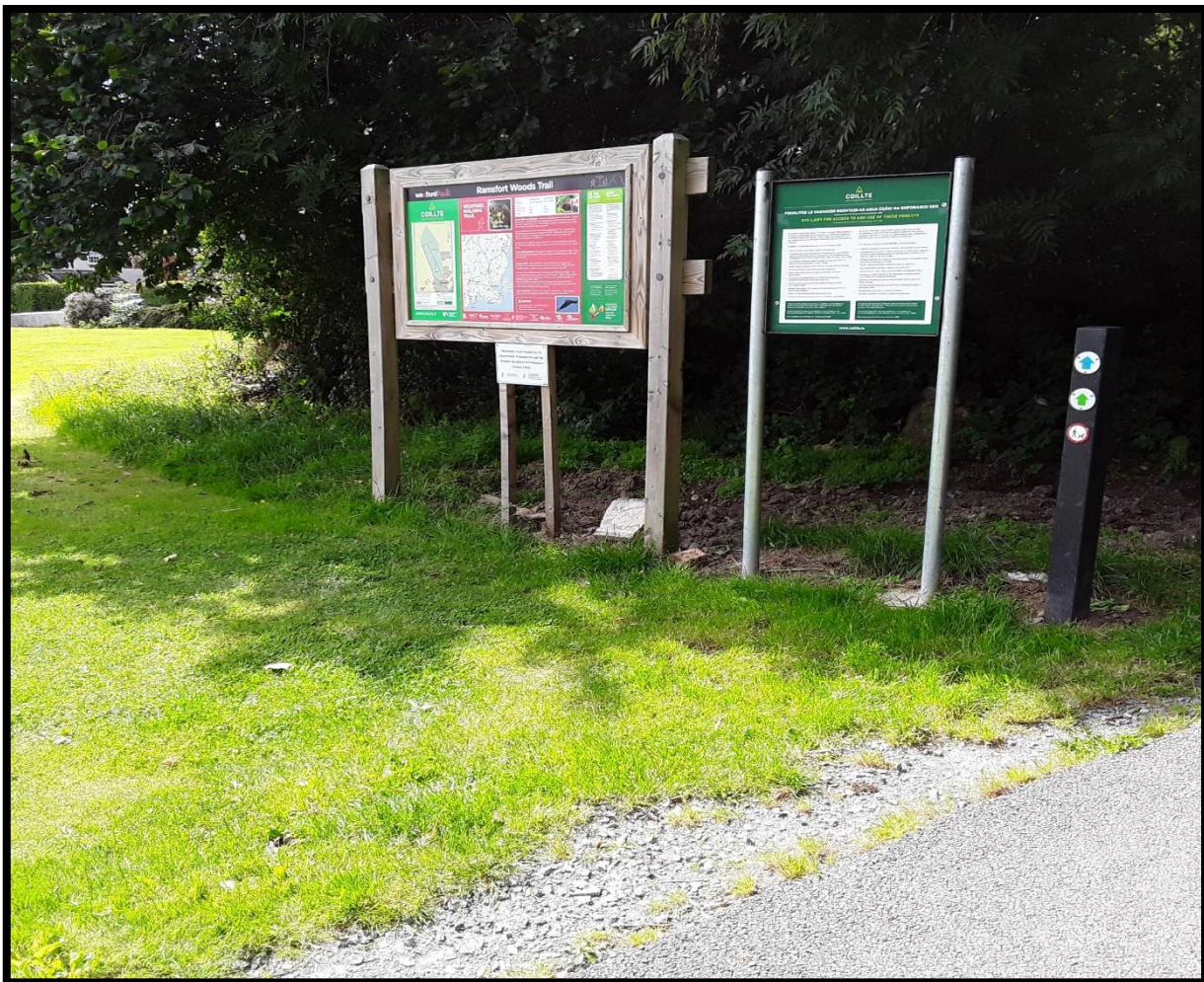
Coordinates:

52°40'58.7"N+6°17'45.6"W



## Trail Details

Located off Gorey's Main Street via Fort Road, this fully accessible looped walkway of approximately 1km is a hidden gem on the outskirts of the town centre. Parking is available on site (6 spaces). The woodland walk showcases many artistic features, such as wind chimes, fairy doors and seating to allow you to experience the sounds of bird song and nature.





## Approach

This looped trail has a multi-user tarmacadam surface and path widths of over 2 metres, making it fully accessible. The route affords the visitor peace and tranquillity amongst an established and mature woodland.



## Features

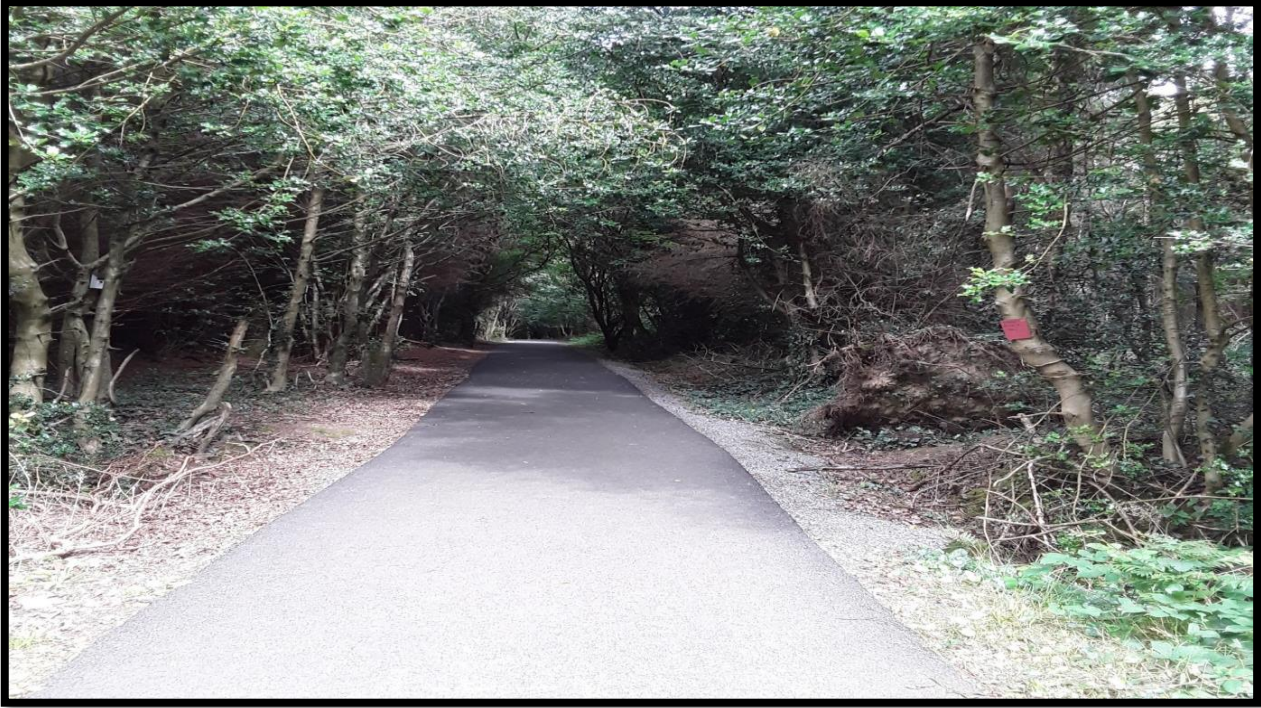
The trail features a fully-accessible path through an established woodland, where the visitor can take in the bird song, the rustle of leaves, the smells of nature and a sense of calm.





## Features

The trail features a fully-accessible path through an established woodland, where the visitor can take in the bird song, the rustle of leaves, the smells of nature and a sense of calm.



## View of the Trail

The multi-user surface allows for mobility aids and all levels of walkers to navigate the trail in a safe and enjoyable manner.

