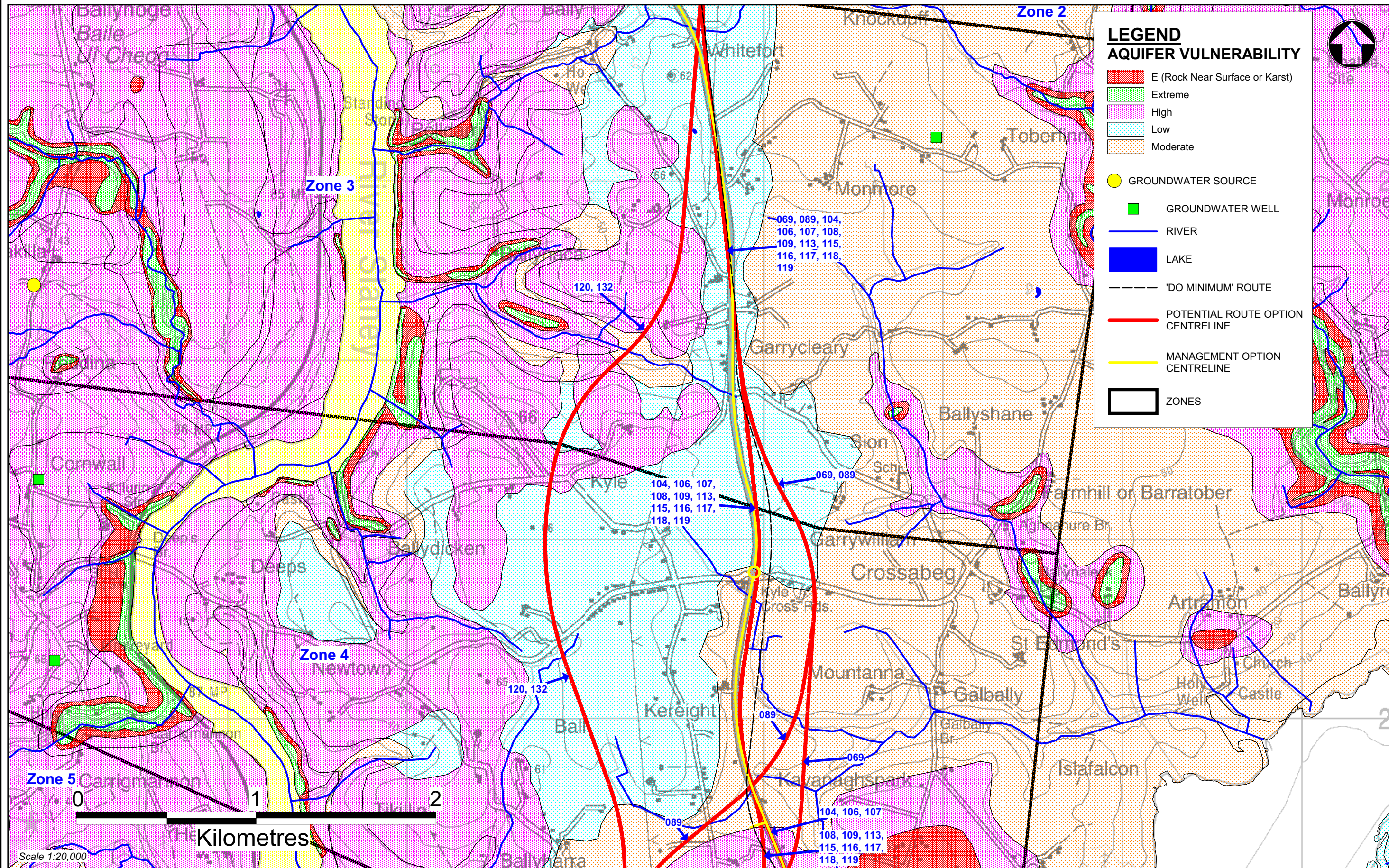
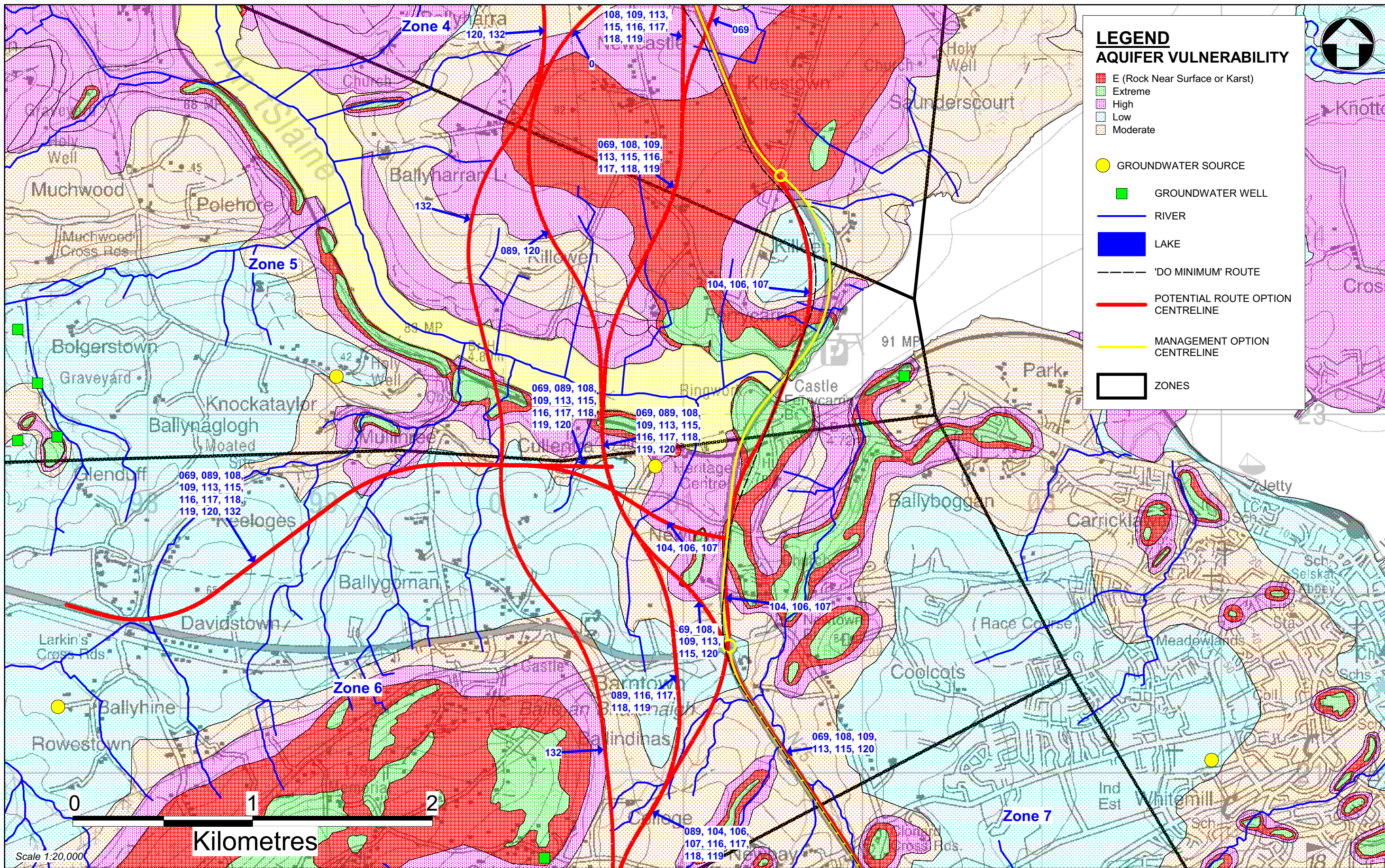


© Mott MacDonald
 This Document is issued for the party to which commissioned it and for specific purposes connected with the captioned project only. It should not be relied upon by any other party or used for any other purpose.
 We accept no responsibility for the consequences of this document being relied upon by any other purpose, or being used for any other purpose, or containing any error or omission which is due to an error or omission in data supplied to us by other parties.



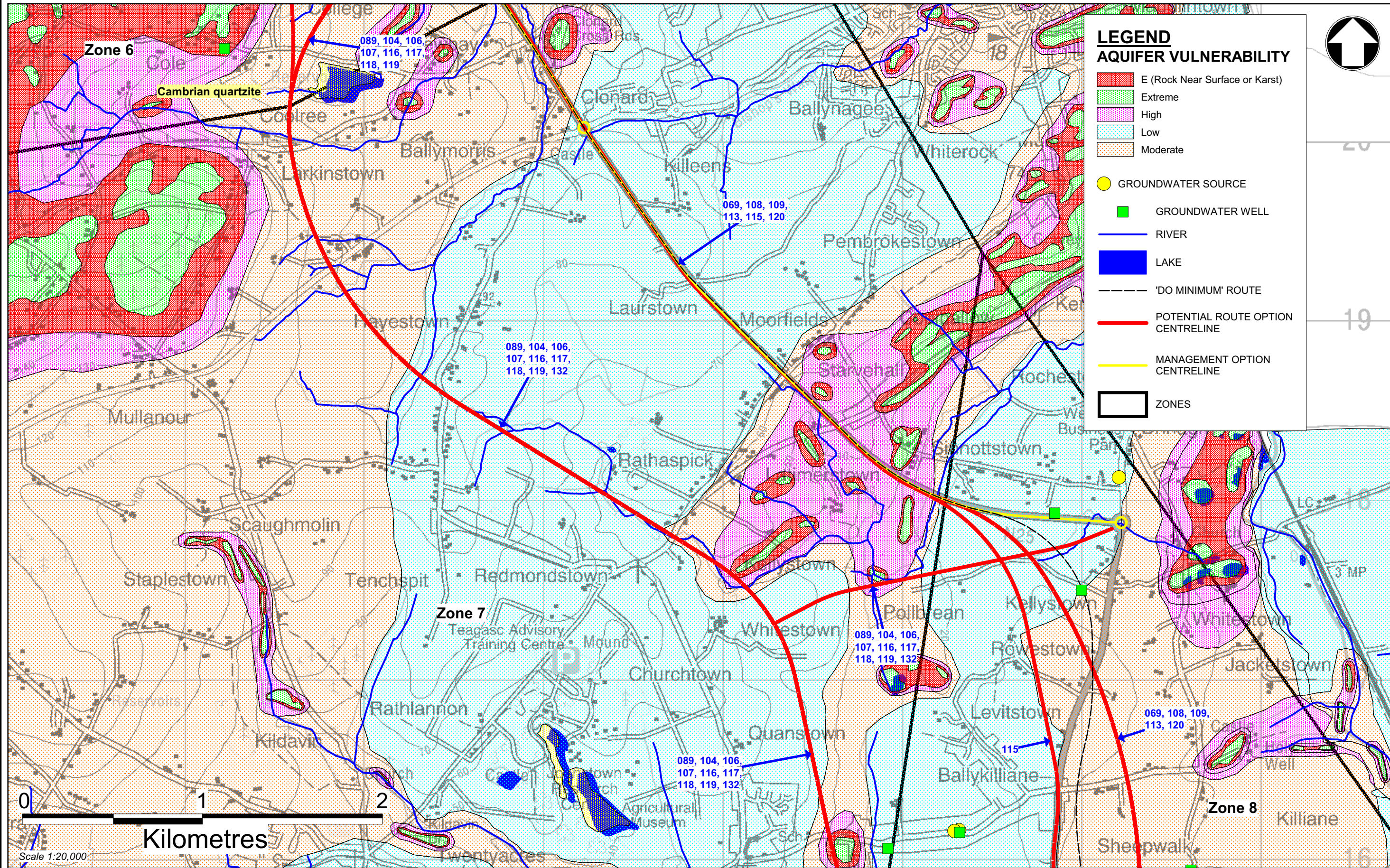


© Mott MacDonald
 This Document is issued for the party to which commissioned it and for specific purposes connected with the captioned project only. It should not be relied upon by any other party or used for any other purpose.
 We accept no responsibility for the consequences of this document being relied upon by any other purpose, or being used for any other purpose, or containing any error or omission which is due to an error or omission in data supplied to us by other parties.

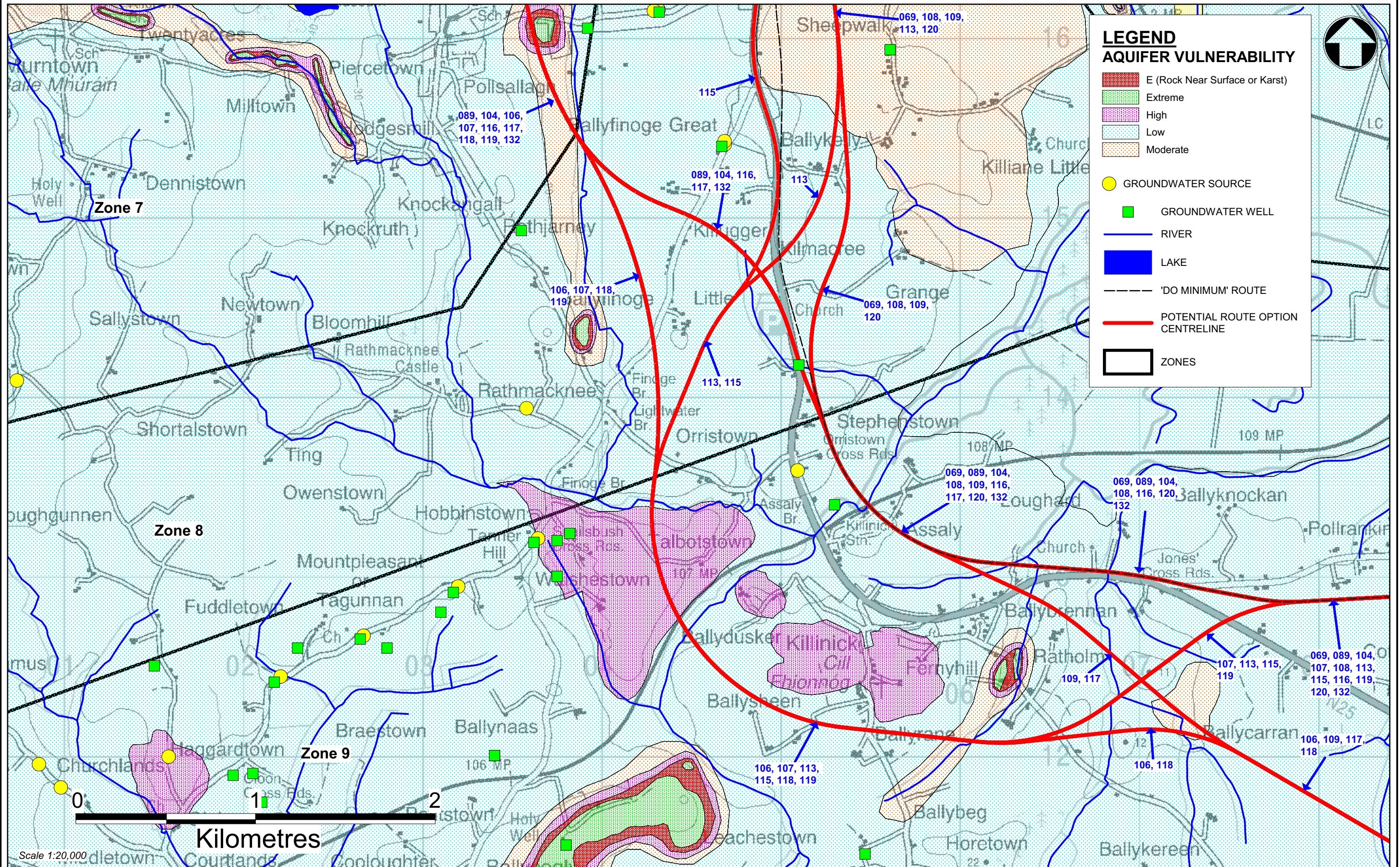


© Mott MacDonald
 This Document is issued for the party to which commissioned it and for specific purposes connected with the captioned project only. It should not be relied upon by any other party or used for any other purpose.
 We accept no responsibility for the consequences of this document being relied upon by any other purpose, or being used for any other purpose, or containing any error or omission which is due to an error or omission in data supplied to us by other parties.

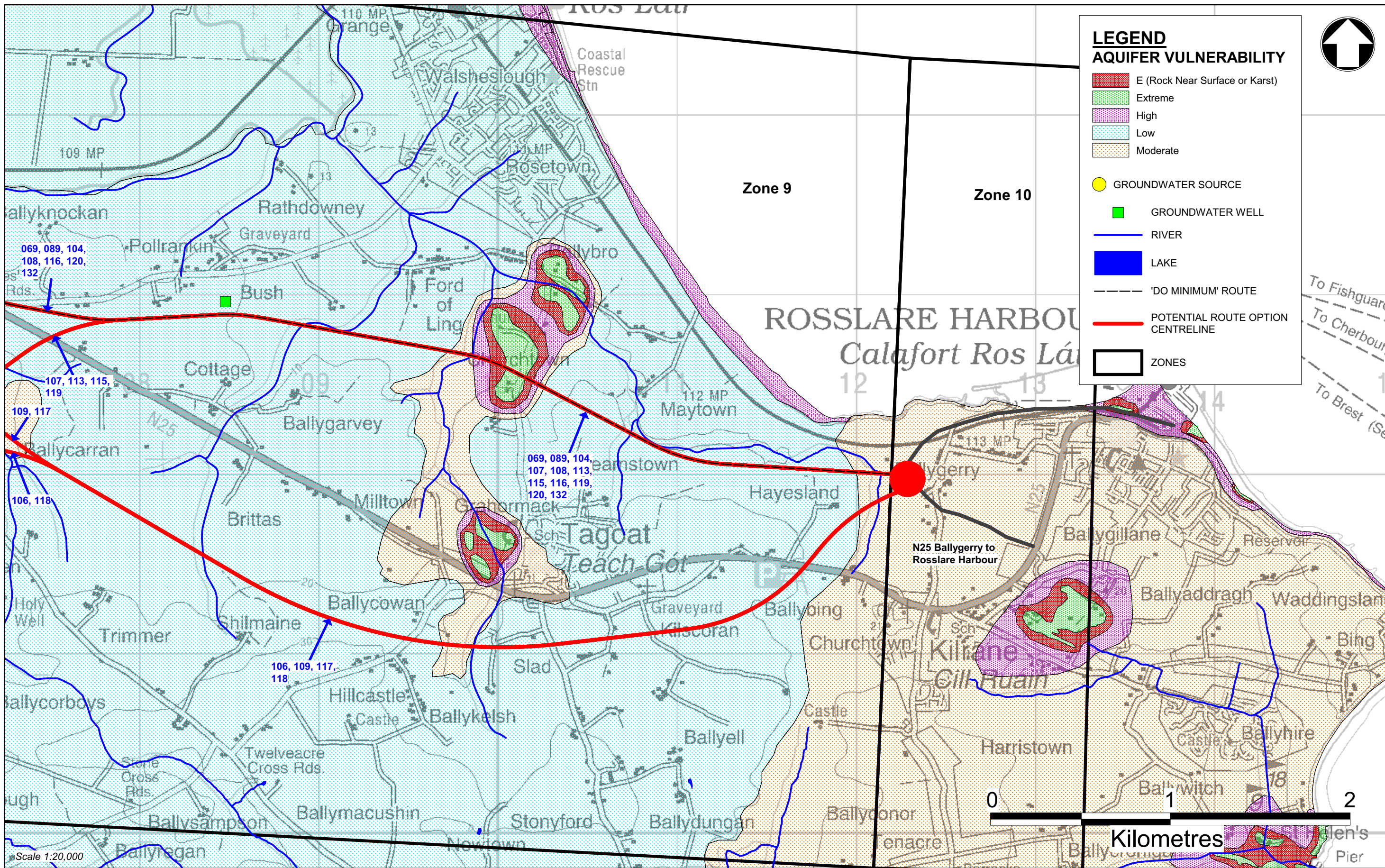




© Mott MacDonald
This Document is issued for the party to which commissioned it and for specific purposes connected with the captioned project only. It should not be relied upon by any other party or used for any other purpose.
We accept no responsibility for the consequences of this document being relied upon by any other purpose, or being used for any other purpose, or containing any error or omission which is due to an error or omission in data supplied to us by other parties.



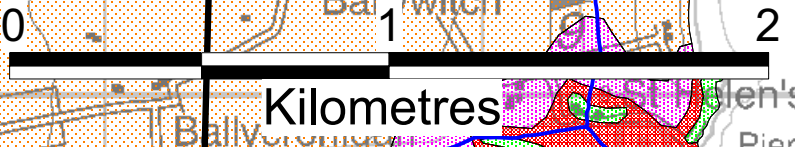
© Mott MacDonald
This Document is issued for the party to which commissioned it and for specific purposes connected with the captioned project only. It should not be relied upon by any other party or used for any other purpose.
We accept no responsibility for the consequences of this document being relied upon by any other purpose, or being used for any other purpose, or containing any error or omission which is due to an error or omission in data supplied to us by other parties.



LEGEND
AQUIFER VULNERABILITY

- E (Rock Near Surface or Karst)
- Extreme
- High
- Low
- Moderate

- GROUNDWATER SOURCE
- GROUNDWATER WELL
- RIVER
- LAKE
- 'DO MINIMUM' ROUTE
- POTENTIAL ROUTE OPTION CENTRELINE
- ZONES



Scale 1:20,000

© Mott MacDonald
 This Document is issued for the party to which commissioned it and for specific purposes connected with the captioned project only. It should not be relied upon by any other party or used for any other purpose.
 We accept no responsibility for the consequences of this document being relied upon by any other purpose, or being used for any other purpose, or containing any error or omission which is due to an error or omission in data supplied to us by other parties.



**N11/N25 Oilgate to Rosslare Harbour
 Route Selection Report**

Figure 8.5.8.f
 Hydrogeology (6 of 6)