



**Ceantar Bardasach
Ros Láir
Rosslare
Municipal District**
"For the Good of All"

Strategic Plan 2024-2030

Achieving Our Full Potential Together

Consultation Report prepared for the Rosslare Municipal District: County Wexford June 2023





What does the Crest stand for?

The Anchor – represents the marine and coastal aspects of the District: Rosslare Harbour, Kilmore Quay, Carne, St Helen’s, Cullenstown, Bannow

The Celtic Cross – represents Christianity and Pilgrimage: Our Lady’s Island, Taghmon

The Pikes – represents the 1798 Rebellion: Forth Mountain, Saltee Islands

The Norman Castle Tower House – represents our Norman Heritage: The Bannow Landings, the Norman Way, Forth & Bargy, Yola



VOR A GOOIDE O’AUL – “For the Good of All”

Yola Language – also known as the Forth & Bargy Dialect. The southern baronies of Forth and Bargy in County Wexford retained the dialect known as Yola until the nineteenth century. Yola was the evolved dialect of the Anglo-Norman settlers who came to Wexford in the aftermath of the invasions of 1160 – 70. Yola meaning ‘old’ was a mixture of Middle English, French, Flemish and Irish.

Our Five Elected Members are, An Cathaoirleach Cllr Lisa McDonald, Leas Cathaoirleach Cllr Frank Staples, Cllr Ger Carthy, Cllr Jim Moore and Cllr Jim Codd.

Contents

| | |
|--|-------|
| Message from the Cathaoirleach | 4 |
| Message from the Chief Executive | 5 |
| Section 1 Introduction | 6-7 |
| Achievements since 2019 | 8-9 |
| Key Resources in the Rosslare Municipal District | 10 |
| Section 2 Evidence Based Strategic Plan | 11 |
| Strategic Plan Road Map | 12 |
| Baseline Data Collection | 13 |
| Key Statistics for the District | 14-15 |
| Compatibility with Global, National and Local Strategies | 16 |
| Design and Place Making in Towns and Village | 17 |
| Community Input: Your Views | 18 |
| Vision 2024 - 2030 | 19 |
| Section 3 Data Mapping | 20 |
| Section 4 High Level Goals | 34 |
| Section 5 Implementation and Next Steps | 43 |



Message from the Cathaoirleach of the Rosslare Municipal District

Rosslare Municipal District, formed in 2019, is special in many ways as it is a rural agricultural district without a large urban centre and abounded by a stunning coastline. We, the members of Rosslare Municipal District see this as a real opportunity to utilise our unique assets and for the focus to be shared equally across the 23 Electoral Divisions and the 28 villages and settlements.

The global pandemic impacted on us all and meant that the establishment and development of our newly formed district was stymied. However, the pandemic is behind us now and it is very opportune to have a strategic plan that outlines a roadmap for the district to proactively meet the challenges head on and grow our district for future generations.

When I was elected as Cathaoirleach of Rosslare Municipal District in 2022 I set out my objectives for the year. This included the development of a focused and strategic plan for the district that would clearly: Identify and evidence local needs; Work with communities to highlight their priorities; and Establish positive initiatives and relevant programmes to strengthen and grow our communities, our settlements and our villages in a sustainable manner through working together collaboratively.

We in the Rosslare Municipal District are committed to working together with our communities to achieve the following:

- Proactively directing sustainable growth through a strategic led planned approach
- Forging and growing partnerships with key stakeholders to deliver innovative new initiatives of scale
- Finding new and collaborative ways to deliver relevant services where blockages exists
- Attracting EU, national and local funding schemes and programmes to successfully deliver change in the district
- Unlocking resources which are underutilised

As elected members, we are striving to deliver innovative solutions to optimise:

- Economic growth
- Housing for all
- A sustainable environment that charts a pathway to carbon neutrality by 2050 through tapping into climate change opportunities and delivering solutions
- Restoring, protecting and celebrating our natural, built and cultural heritage
- Innovative delivery of facilities and services within rural communities through capacity building and encouraging volunteerism
- Encouraging and motivate our youth to become the next generation of community leaders
- Maximising opportunities for tourism and recreation to create healthy lifestyles, positive well-being and new economic opportunities
- Public infrastructure that is accessible to all and safely connects people to their local facilities and services



Message from the Chief Executive of Wexford County Council Tom Enright

I am delighted to support the development of this Strategic Plan for the Rosslare Municipal District and I commend the members for embarking on this initiative. The delivery of the County Development Plan 2022 – 2028 is the overall framework for development of the county to guide, harmonise and facilitate development.

The Rosslare Municipal District Strategic Plan compliments this process by developing a road map for the district to plan, prepare and deliver projects and initiatives that will tap into the strengths and opportunities in the district to improve the quality of life for all the people and contribute to the positive growth of the villages and settlements.

There are exciting and positive major developments planned and progressing in the Rosslare Municipal District with the major development of Rosslare Europort and the planned Offshore Renewable Energy Hub Project, the development of the Kilmore Quay Marine Enterprise Hub together with the major infrastructure Roads Projects being progressed along the N11/N25 Oilgate to Rosslare Harbour and N25 Rosslare Europort Access Road which in themselves will attract greater investment and growth for the district.

Plans are also progressing for the development of a strategic greenway/ blueway network in the County and Rosslare Municipal District is a particular focus in the early development of this network with plans progressing on Wexford Town to Rosslare Strand, Rosslare Strand to Rosslare Harbour, and with a link between Kilmore Quay and Bridgetown and then on to Rosslare also in the pipeline which will add so positively to the community and tourism offering in the district and the county generally.

The people of the Rosslare Municipal District have dedicated and committed elected members representing the district and their vision to develop this Strategic Plan is another measure of their endeavours to work with the Executive of Wexford County Council and other stakeholders for the benefit of all who live, visit or work in this area.



A handwritten signature in black ink, which appears to be 'T. Enright'. The signature is written in a cursive style and is positioned below the main text block.





Section 1

Introduction

Introduction

The Rosslare Municipal District (MD) is a rural area, characterised by a high-quality agricultural resource, vibrant fishing sector, important tourism economy and direct access to the UK and Europe through the Rosslare Europort.

Rosslare MD is the newest district in County Wexford and this Strategic Plan, commissioned by the elected members of the district, recognises that there is a need to have an evidence based and planned approach to the future development and growth of the district over the next 7 years. This will ensure it has every opportunity to reach its full potential, in accordance with the objectives set out in the County Development Plan 2022-2028.

Positive initiatives delivered over the last three years prompted the ambition to complete a holistic strategy that would serve as a blueprint for developing the district by providing a roadmap to deliver beneficial projects for our communities.

In particular, this plan aims to:

- Appraise our key attributes and explore the opportunities for enhancing the quality of life for everyone living, working or visiting the District.
- Identify resources which are underutilised and progress initiatives to develop them to their full potential.
- Exploit the unique direct access to Europe and the UK and the opportunities this presents and will continue to emerge.

The development of this strategy is particularly important as there is no large urban centre which therefore precludes it from applying for Urban Regeneration Development Funds. However, there are a wide and growing range of grants that are targeted at rural areas and a specific objective within this plan is to support communities in the district so that they have plans and proposals 'shovel ready' to apply for funding for their projects.

This is an ambitious and forward-looking Strategic Plan and it is the first of its kind to be prepared in the county. We look forward to collaborating with all of the stakeholders in an effort to deliver the extensive range of initiatives that have been identified through the consultation process and to working with relevant agencies and bodies to find better ways to deliver results. This will result in catalysts for positive change and sustainable growth and enhance the quality of life for people who live, visit and work in the district over the coming years.

Rosslare Municipal District Manager:
Nóirín Cummins

Rosslare Municipal District Director:
Annette O'Neill



Achievements

- ✓ Secured over €6.5m in grants across the Rosslare MD delivering community projects
- ✓ Delivered 73 Social Housing Units, an increase of 12% bringing social housing stock to 688
- ✓ 63 housing units in the pipeline for the district
- ✓ Improved and strengthened 165kms of roads at a cost of €11.1m equating to 27% of the total 605kms of roads in the district
- ✓ Replaced and installed almost 22kms or 40,856m² of pedestrianised surfaces/footpaths equating to 10 acres of pedestrian walkways
- ✓ Retained 3 Green Coast Beaches at St Helen's, Ballyhealy, Cullenstown and secured an additional Green Coast Beach in Rosslare Harbour
- ✓ Secured the first Community Parks Green Flags in Our Lady's Island; Foulksmills and Rosslare Harbour
- ✓ Awarded 20 Civic Awards for excellence in Sport, Music, Education & Ploughing, Service to the Community and Milestone awards
- ✓ Constructed a dedicated Rosslare MD Office
- ✓ Constructed and enhanced amenity areas



since 2019

- ✓ Construction of Kilmore Quay Link Road and site selection for the Kilmore Quay Enterprise Hub
- ✓ Twinning agreement with Dunkirk and completed two student exchange programmes
- ✓ 5 new Wexford Walking Trails & the launch of the EuroVelo route
- ✓ Retained 2 Blue Flag Beaches - Rosslare Strand & Carne & Blue Flag Marina at Kilmore Quay
- ✓ Further developments of the Norman Way
- ✓ Purchase of the Bank of Ireland property in Rosslare Harbour for development as a Community Resource Centre
- ✓ Development of Skeater Point Amenity Area on Forth Mountain
- ✓ Installed Bike Stands and Bike Repair Stations in many locations
- ✓ New playground and park in Bridgetown
- ✓ Improved beach access & coastal protection
- ✓ Welcomed over 600 Ukrainian refugees
- ✓ Provided refuge for over 100 international protection applicants



Key Resources in the Rosslare Municipal District

- 84km of stunning unspoilt coastline with 2 Blue Flag Beaches, 3 Green Coast Awards and the Kilmore Quay Blue Flag 60 berth Marina
- Rosslare Europort – Ireland’s Gateway to Europe. One of the busiest ports in Ireland with 30+ direct sailings to the Continent per week
- 28 attractive rural villages / settlements with a total population of 23,435 living in the district (2022 CSO)
- Fishing Ports of Rosslare and Kilmore Quay (totalling together over 5% of landings by Irish Vessels by Port (Value) in 2021)
- Gateway to the EuroVelo Route 1 titled the ‘Atlantic – Coast Route’ connecting Ireland to the whole European continent stretching from Norway to the Algarve
- Kilmore Quay Enterprise Hub: Progressing to Development
- Area of 400km² with substantial land in farmland. There are several speciality farm shops, pubs and restaurants offering produce from Wexford’s fine food producers including apple juice, strawberries, home bakes and seafood
- Numerous community parks and amenity spaces
- The first Green Flag Community Parks in County Wexford and the first Blueway to be progressed in County Wexford along the river Corock
- The Great Saltee Island is a famous bird sanctuary in Ireland, situated 5km off Kilmore Quay
- There are 18 medieval heritage sites situated on the Norman Way – a true treasure of Ireland’s Ancient East
- Johnstown Castle Estate, Museum and Gardens: A landmark tourism destination
- Two wind farms and solar PV farms under construction

Johnstown Castle Estate:

Environmental Protection Agency, Department of Agriculture, Food and the Marine, Teagasc Research – Soils and the Rural Environment, New National Agricultural Sustainability Research & Innovation Centre (NASRIC: Teagasc)





Section 2

Evidence Based Strategic Plan

Strategic Plan Road Map

To ensure the completeness and relevance of this plan to produce real deliverables for the Rosslare MD it is being prepared on a phased basis. It is critical to successful outcomes that there is a full understanding of where we are, what we need and who are the potential partners that will and can work with communities, members and the executive of the Rosslare MD to allow focus to be brought on relevant and sustainable projects and a road map to positive growth. As a result the approach is based on two phases as set out below.

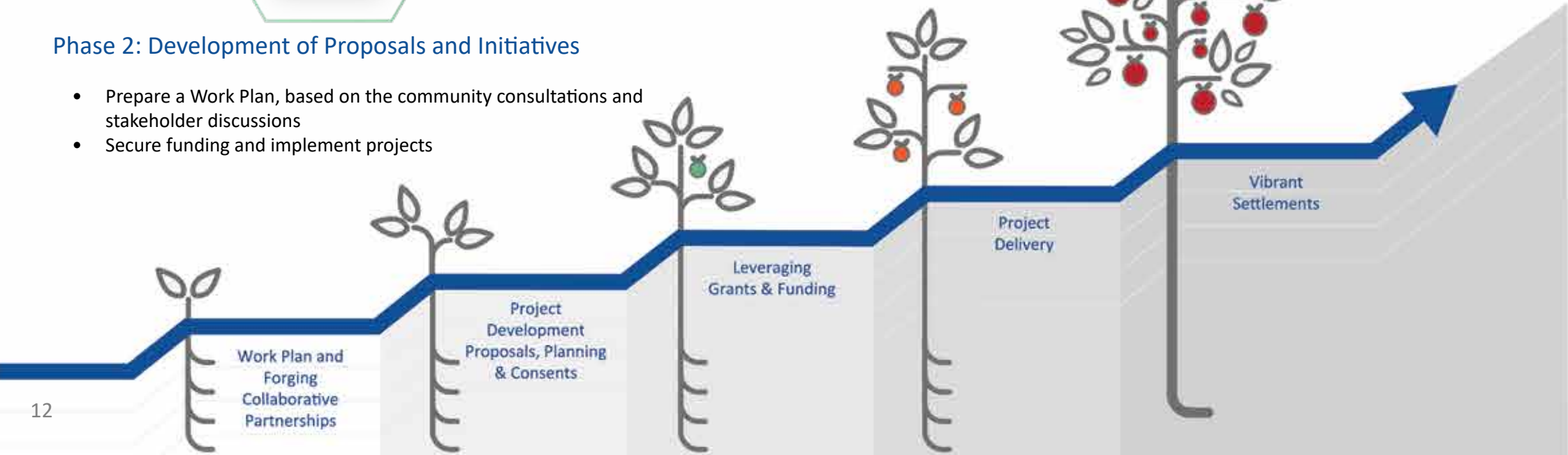


Phase 1: Consultation Process

- Introducing the six pillars that served as the framework for the consultation process: Economic; Tourism / Recreation / Heritage / Culture; Housing; Community; Environment / Climate Change; & Public Infrastructure
- Identification of needs through surveys and interviews
- Desktop analysis and development of interactive mapping of the district utilising CSO data and strategic reports
- Exploring potential partnerships and opportunities through discussions with key stakeholders
- Setting clear high-level goals for each of the six pillars

Phase 2: Development of Proposals and Initiatives

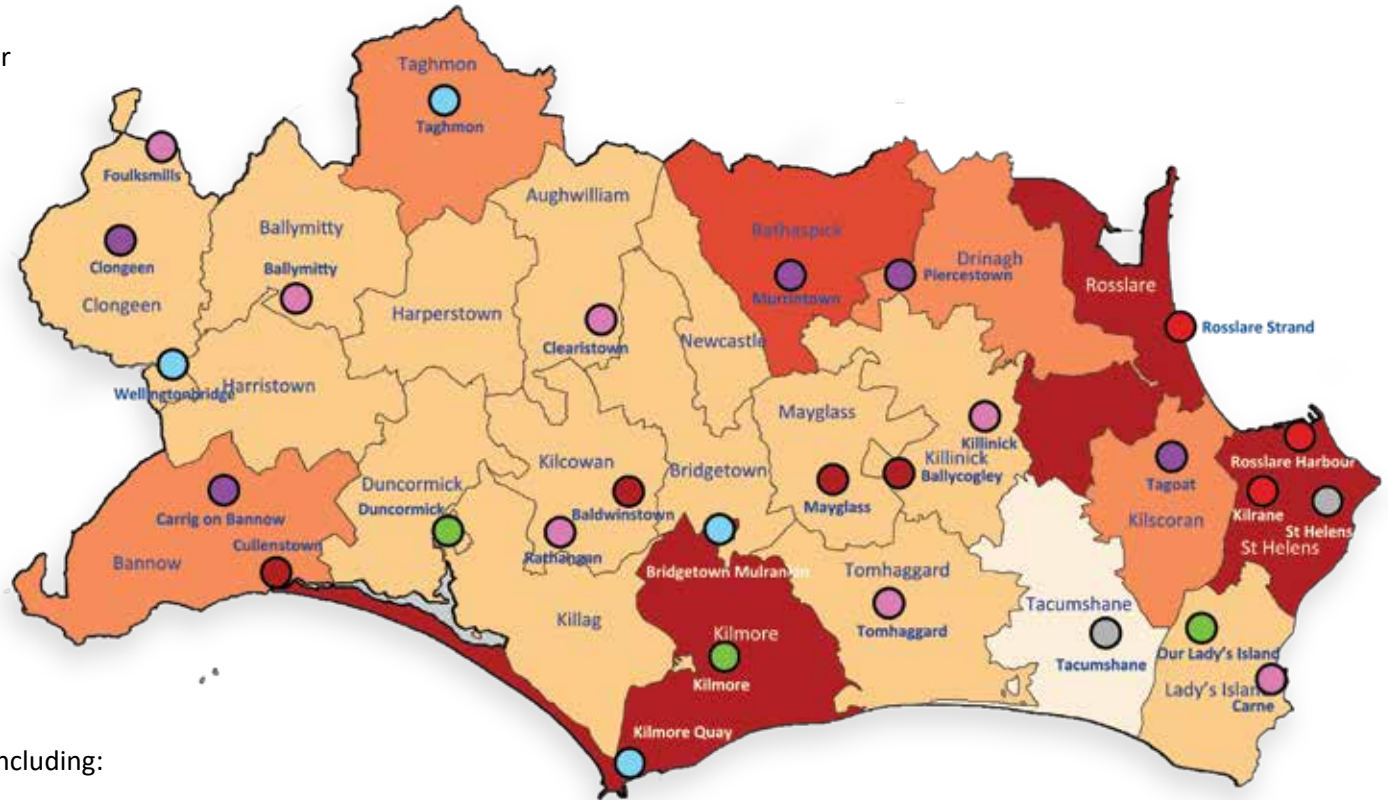
- Prepare a Work Plan, based on the community consultations and stakeholder discussions
- Secure funding and implement projects



Baseline Data Collection

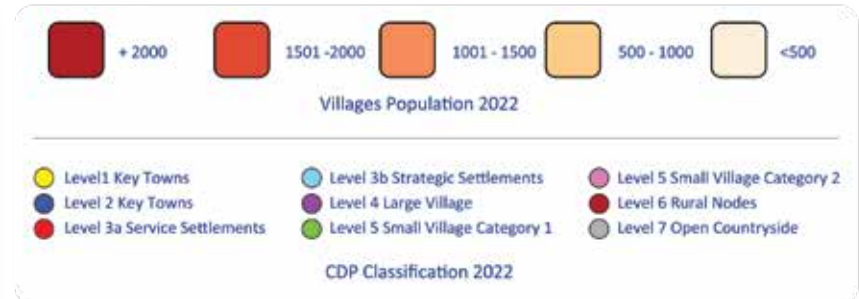
In advance of the consultation process, a series of baseline maps were developed to give a greater understanding of the district, its socio-economic profile and other key data. The mapping is set out in more detail in Section 3 of this report and the map below illustrates a number of key facts and baseline data statistics that help to inform the development of the vision for the district including:

- Location of the 28 Villages and Settlements
- 2022 Population by Electoral Division (ED) with colour coding (see legend)
- Village/Settlement classification as set out in the 2022-2028 County Development Plan
- There are:
 - Not any Level 1 or Level 2 towns
 - Three Level 3(a) Service Settlements
 - Four Level 3(b) Strategic Settlements
 - Five Level 4 Large Villages
 - Ten Level 5 Small Villages
 - Four Level 6 Rural Nodes
 - Two Level 7 Open Countryside



This mapped data provides some interesting information including:

- The population of Rosslare MD has grown by 19% in the period 2006 to 2022.
- St.Helen's ED which includes Rosslare Harbour / Kilrane experienced the highest population increase at 41%.
- Reductions in population in both Tomhaggard (-11%) and Drinagh ED (-3%)



Key Statistics for the District



Demographics

23,435

Total Population in 2022: a 19% increase from 2006 with a population of 19,738

22.4%

Are **one-person households** (2016 CSO) compared to 23.5% nationally

Aged **65+**

17% of the population, compared to 13% nationally (2016 CSO)

under **18**

29% of the population are under 18 years of age (2016 CSO) compared to 25% nationally



Housing

7%

The percentage of **vacant houses** in 2022 totalling 772 houses compared to 8% nationally

11,492

Total **number of houses** in 2022: a 20% increase from 2006 with a total of 9,586 houses

11%

Of **households are rented** from private landlords compared to 18.2% nationally (2016 CSO). 8% are rented socially compared to 9.4% nationally



Education

14 Schools

13 Primary Schools and 1 Post Primary School

13%

Of the population have a **degree or higher qualification** compared to the state average of 20.8% (2016 CSO)

16.7%

Have **no formal education / primary education** compared to 12.5% nationally (2016 CSO)



Employment

85%

Of the population **employed** and 14.8% unemployed (2016 CSO)

57.9%

Labour Force Participation Rate compared to 61.4% nationally



Health

10 Medical

3 HSE Health Centres (Bridgetown, Taghmon and Rosslare) and 7 GP Practices

60%

Rated their health as very good in line with the national average



Environment

71%

Of homes are oil heated compared to 40% nationally and 67% in County Wexford (CSO 2016).

17%

Use coal for heating compared to 5% nationally



Services

5

Garda Stations in the District (Rosslare Harbour, Rosslare Strand, Taghmon, Kilmore Quay, Carrig on Bannow)

0

No banks but a number of credit unions

8

Post Offices

9 or more Facilities

- Rosslare Strand
- Killnick
- Rosslare Harbour
- Bridgetown
- Taghmon
- Kilmore Quay
- Wellingtonbridge

7-8 Facilities

- Murrintown
- Rathangan
- Our Ladys Island

5-6 Facilities

- Carrig on Bannow
- Piercestown
- Clongeen
- Kilmore
- Kilrane

3-4 Facilities

- Mayglass
- Tacumshane
- Ballycogley
- Tagoat
- Ballymitty
- Foulksmills
- Baldwinstown
- Cleariestown

0-2 Facilities

- Carne
- St Helen's
- Cullenstown
- Tomhaggard
- Duncormick

Types of facilities in the Community Survey

Pub, Café, ATM, Shop, Pharmacy, Post office, Playground, Sports Facilities, Daycare facilities for the elderly and disabled, EV Charging Point, Community Centre, Community Chilcare, Garage Filling Station

Compatibility with Global, National and Local Strategies

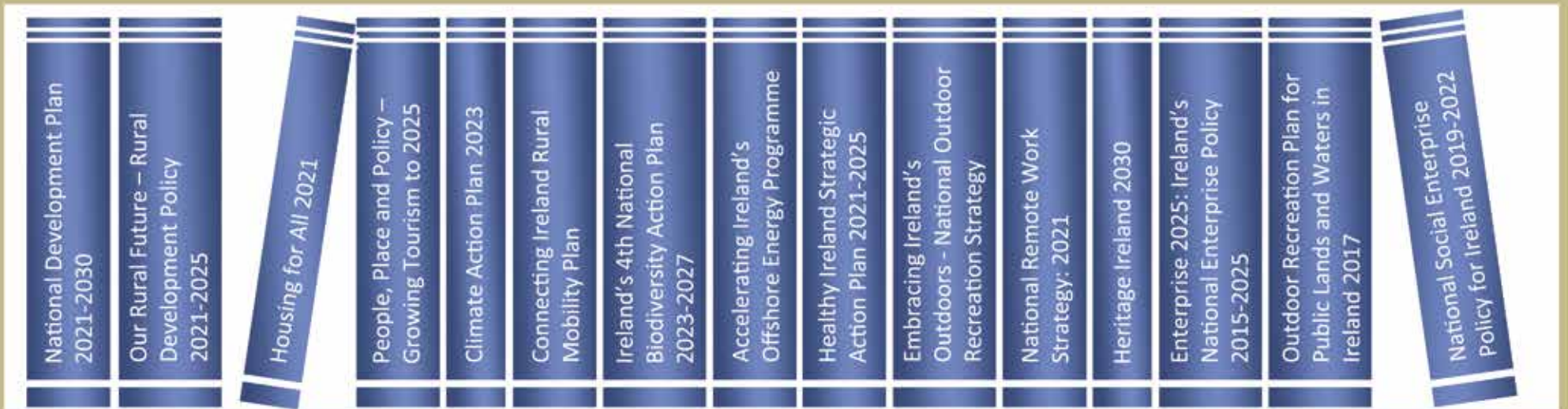
The high-level goals identified in this strategic plan have been informed by global, national and local policy documents indicated below.



Rosslare District Strategic Plan 2024 - 2030



REGIONAL / LOCAL STRATEGIC PLANS



NATIONAL STRATEGIC PLANS

United Nations Sustainable Goals

Common Agricultural Policy 2023-2027

Design and Place-Making in Towns and Village Wexford County Development Plan 2022-2028

In order to create sustainable and successful villages in the Rosslare Municipal District it will require a partnership approach between Wexford County Council, Rosslare Municipal District, Government Agencies, Stakeholders, local communities and businesses. The Wexford County Development Plan (2022-2028) outlines the Council's commitment to improving the quality of the county's towns and villages and contains the objectives to ensure that they are attractive and functional places where people want to live, work, access services and raise their families.

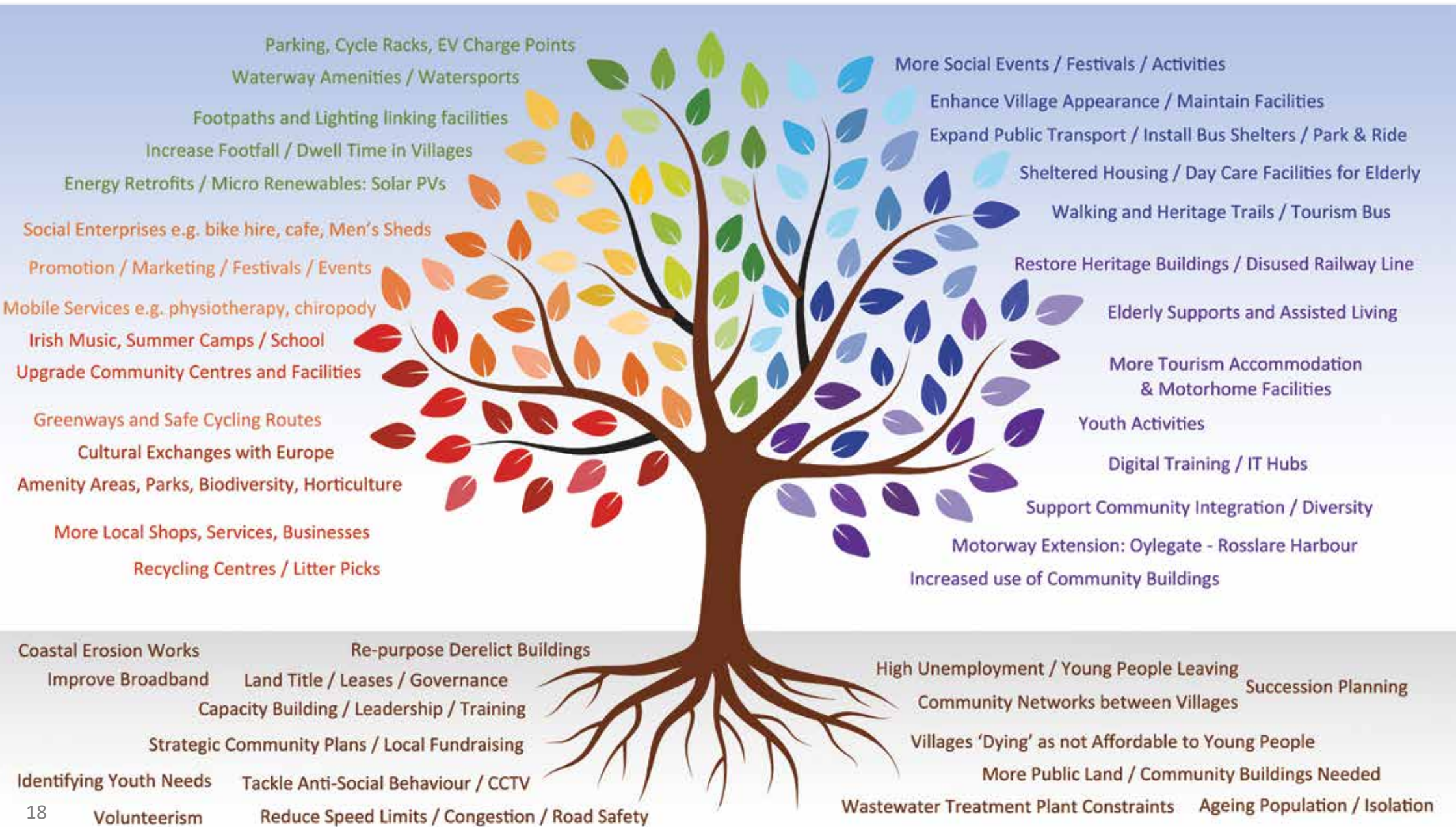
The County Development Plan recognises the many components and conditions that are required for successful Place Making and provides a useful diagram that identifies these components and this diagram is repeated below.

Components of successful places



Community Input: Your Views

Engagement and consultation were a key component of this research. Representatives from the 28 villages and settlements contributed to this process by identifying their needs and priorities. This has enabled the voice of the community to be heard which supports a plan led approach to achieving thriving and sustainable communities. The diagram below captures the emerging themes relayed through the consultation process.

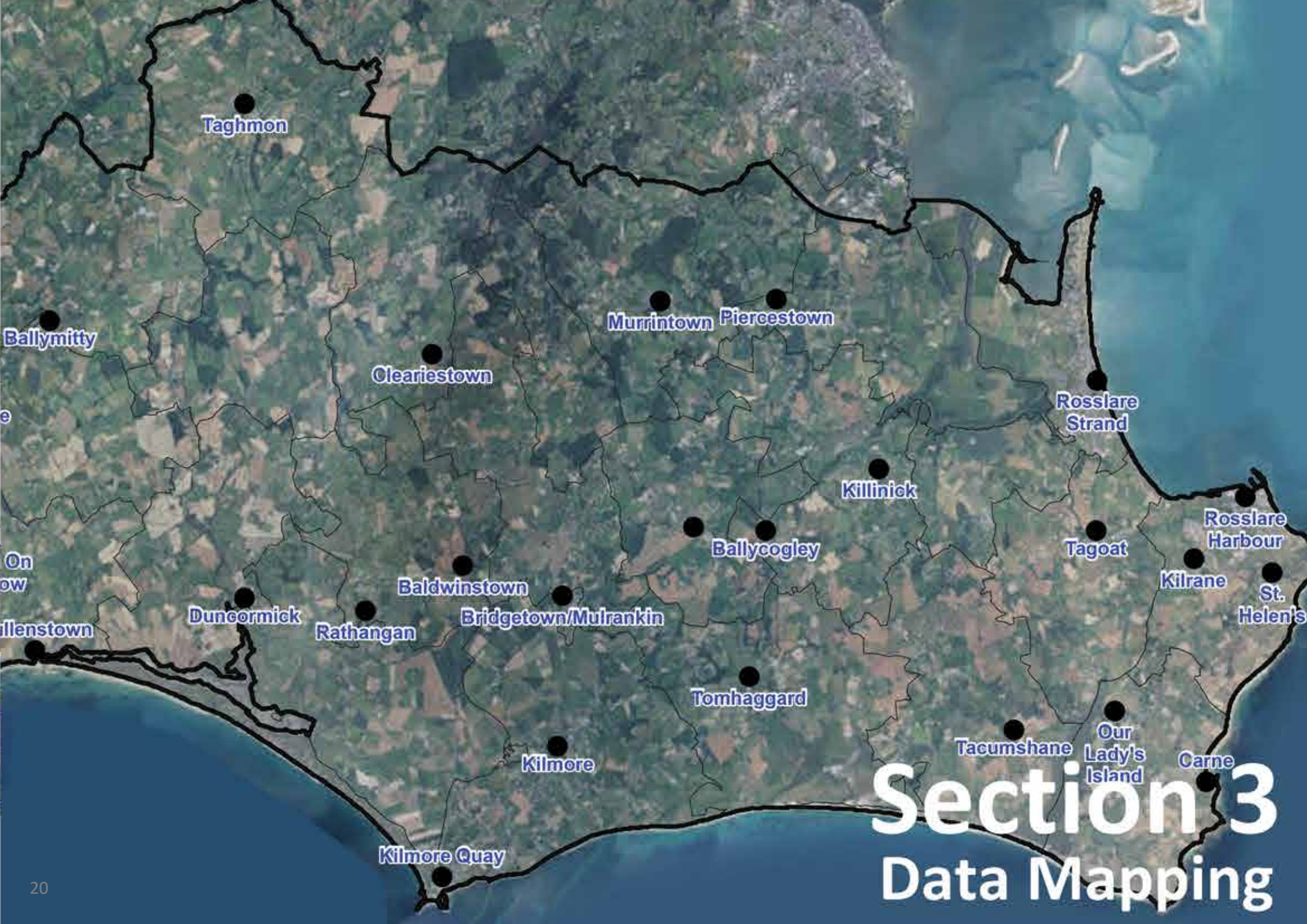


Vision 2024 - 2030:

Working together, through a plan led approach, to nurture communities to realise their full potential, develop infrastructural opportunities, embrace climate action and improve the quality of life for all citizens living, working and visiting this rural district.



This vision builds on the objectives within the CDP 2022-2028 and LECIP framework and embraces the principles underpinning Wexford County Council's Economic & Community Investment Programme for the County.



Section 3

Data Mapping

Introduction To Mapping

As set out in the Strategic Plan Road Map earlier in this report, Phase 1 of the development of this Strategic Plan for the Rosslare MD involved consultation with communities and other stakeholders, a review of relevant strategies and the development of baseline maps.

This section of the report sets out a sample of the interactive maps produced, with the assistance of Wexford County Council's ICT team, to assist and complement other data gathered and analysed, with a view to establishing all relevant information in relation to socio-demographic and economic trends. The consolidation of the information and findings from these sources helped to improve the evidence informed high level goals delivered for this seven-year plan.

These maps aim to provide valuable information and statistics across a number of key parameters, under each of the six pillars which form the basis of the road map for delivery of this Strategic Plan.

The data has largely been sourced from the Central Statistics Office (CSO) and where 2022 preliminary data was not available the findings have relied on the data from the 2016 Census.

The combination of data sources, using the interactive mapping tool, enables a focus on related information, so that an understanding of the overall position of the various settlements within the Rosslare MD can be obtained.

A sample selection of the maps and the findings are set out in the following pages and include:

MAP 1 - General Overview: Population Movement 2006 to 2022

MAP 2 - Economic: Socio-Economic Profile of Rosslare Municipal District

MAP 3 - Economic: Unemployment Levels 2016

MAP 4 - Tourism & Recreation: Mapping of Existing Trails and Recreation Awards

MAP 5 - Tourism & Recreation: Planned and Proposed Recreational Trails

MAP 6 - Housing: Housing Stock & Waste Water Services

MAP 7 - Housing: Vacant Housing and Waste Water Treatment Plants (WWTP) between 2006 and 2022

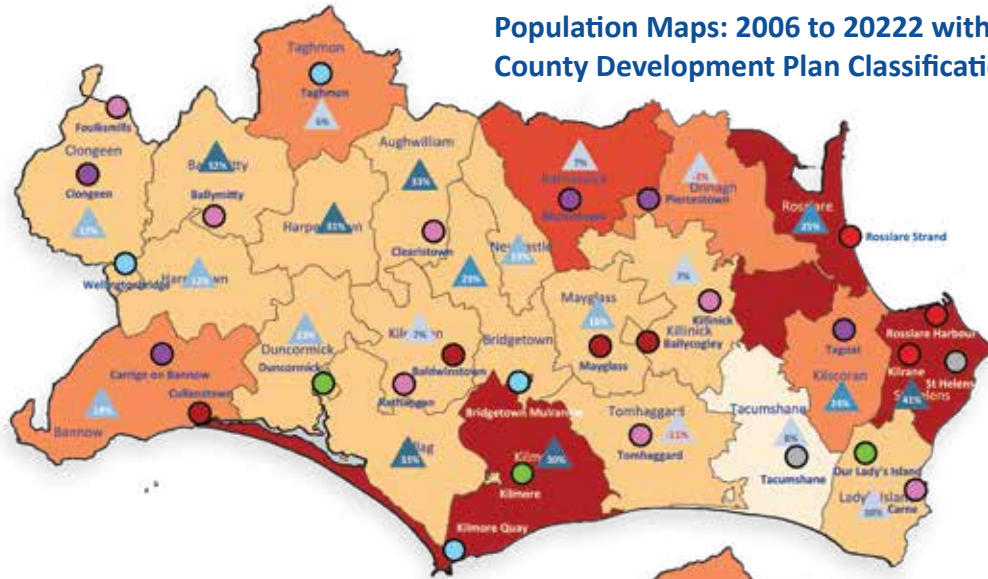
MAP 8 - Community: Villages and Services

MAP 9 - Environment: Key Renewable Energy Sources

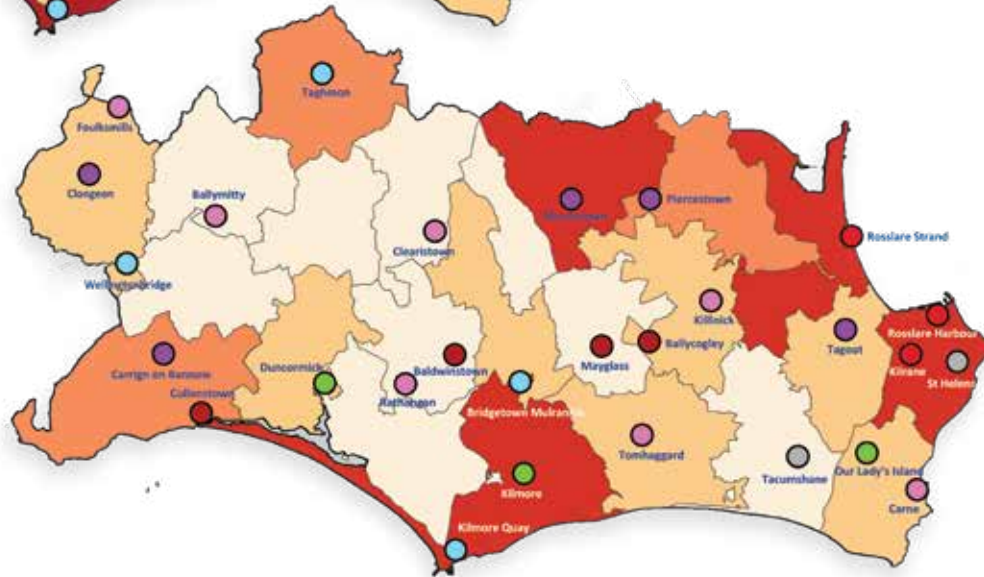
MAP 10 - Public Infrastructure: Major Road Projects

MAP 1 – General Overview: Population Movement 2006 to 2022

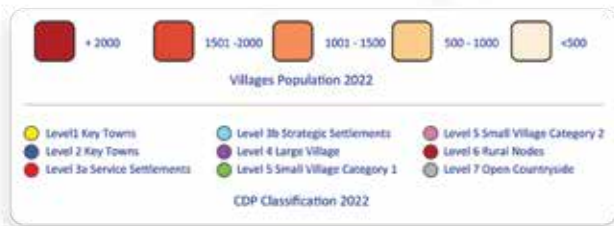
Population Maps: 2006 to 2022 with County Development Plan Classification



2022 Population Map



2006 Population Map

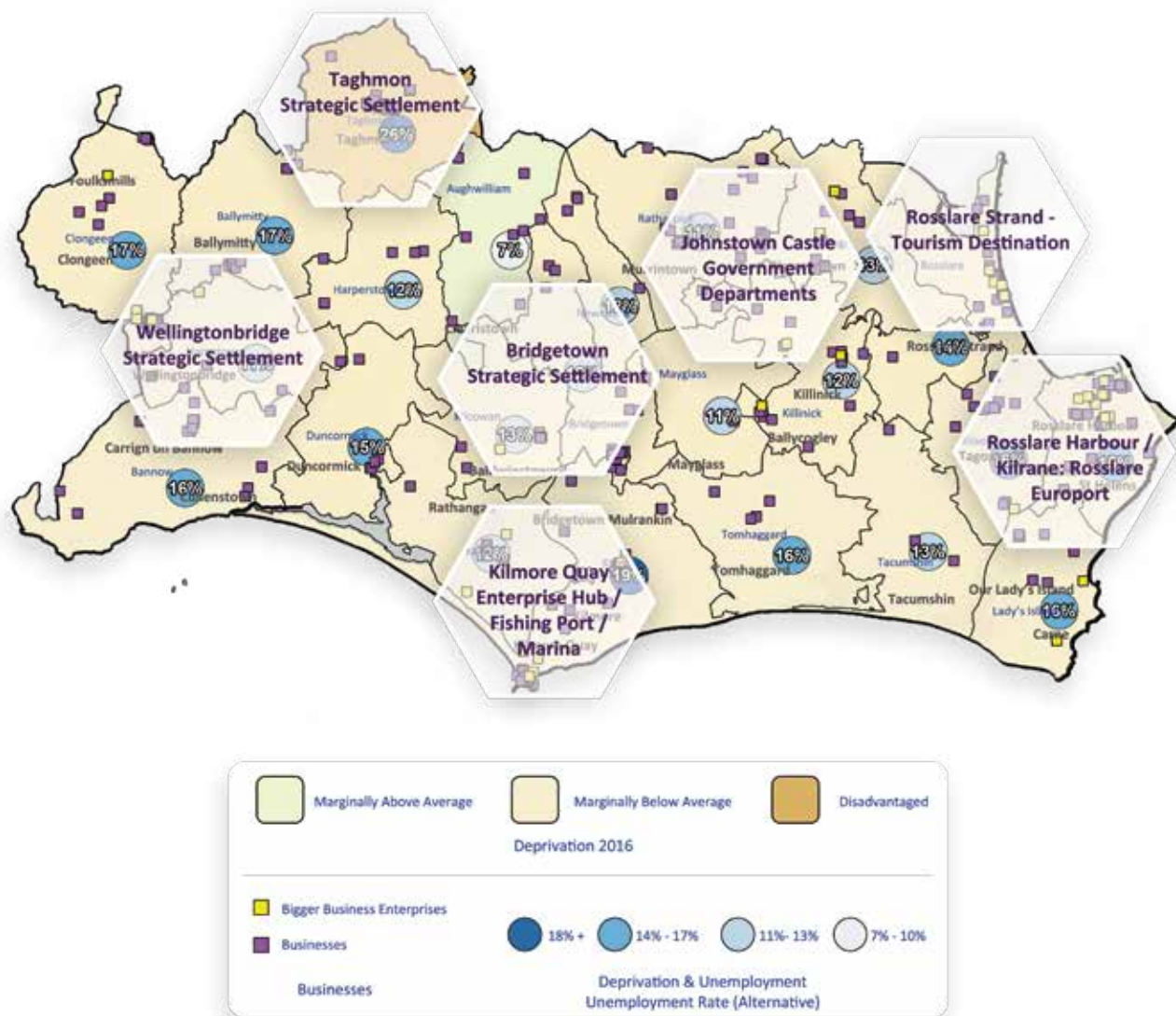


- The population of the Rosslare MD increased by 19% between 2006 to 2022
- St.Helen's ED which includes Rosslare Harbour / Kilrane experienced the highest increase at 41%
- Populations in Aughwilliam, Ballymitty, Harperstown, Killag, Kilmore, increased by over 30%
- Bridgetown, Duncormick, Kilsoran and Rosslare have recorded population growth of over 20%
- Bannow, Clongeen, Harristown, Lady's Island, Mayglass and Newcastle increased by 10% or more
- Kilcowan, Killinick, Rathaspick, Tacumshane and Taghmon saw increases less than 10%
- Reductions in population were recorded in both Tomhaggard (-11%) and Drinagh (-3%)
- Population growth in the district was 9% following the 2006 census, 1.2% following the 2011 and 7.7% following the 2022 Census.

| Census | Population Growth | % Growth |
|--------|-------------------|----------|
| 2006 | 19,738 | |
| 2011 | 21,508 | 9.0% |
| 2016 | 21,758 | 1.2% |
| 2022 | 23,435 | 7.7% |

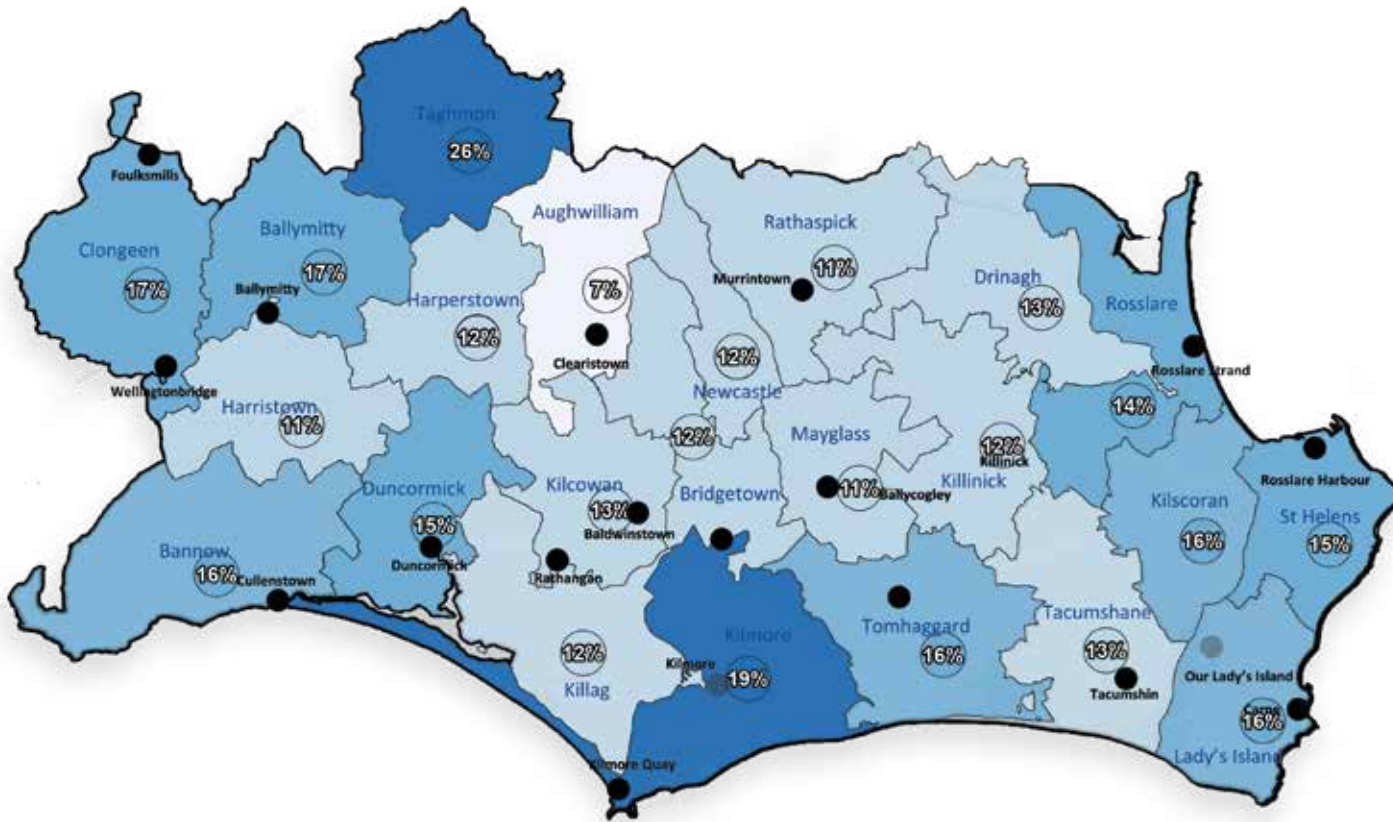
Total Population in Ireland increased by 8% in the 2022 Census.

MAP 2 – Economic: Socio-Economic Profile of Rosslare Municipal District



- The socio-economic profile is based on the combined mapping of commercial businesses, key economic areas, strategic settlements, unemployment rates and the Pobal Deprivation Index.
- A total of 444 businesses have been mapped across the district. This includes 38 larger type businesses.
- The key economic areas are determined by a cluster of commercial activity.
- The Pobal Indexation of Deprivation has determined that all EDs in the Rosslare MD are recorded as 'Marginally Below Average' Deprivation with the exception of Taghmon which is recorded as 'Disadvantaged' and Aughwilliam which is classified as 'Marginally Above Average.'
- The Pobal HP Deprivation Index is a series of maps measuring the relative affluence of a particular geographic area using data compiled from various census. The measurements look at 10 key indicators including: The proportion of skilled professionals, education levels, employment levels and single parent households. This data set is based on the 2016 census data and is determined at ED level. Pobal Index mapping has been developed right down to street level based on small area statistics that relate to 80 and 100 households on average.
- The deprivation index for Rosslare MD included in the map is based on 2016 data and remains the same as the index records following both the 2006 and 2011 censuses.
- The unemployment level per ED is illustrated in the map providing the % of population that was recorded as unemployed following the 2016 census.

MAP 3 – Economic: Unemployment Levels 2016



This map provides a focused view on unemployment levels in the district by ED. The data here is based on the 2016 CSO data as the 2022 Census data in relation to unemployment levels is not due to be released until later in 2023.

Areas with the highest unemployment levels are:

- Taghmon at 26% of the ED population and Kilmore at 19% of the ED population
- Aughwilliam is showing the lowest level of unemployment at 7% of population
- All other areas are averaging between 11% and 17% of population



MAP 4 – Tourism & Recreation: Mapping of Existing Trails and Recreation Awards



Recreation Awards

- Blue Flag Award
- Green Coast Award
- Green Flag Award

Trails and Activities

Existing Walking Trails Start Points

- Existing Activity Trails
- Horse Riding

Existing Walking Trails

1. Forth Mountain Trail
2. Three Rocks Trail
3. Taghmon Trail
4. Churchtown Trail
5. Ballytrent Loop
6. Carne to St. Helen's
7. Carnose Point Trail
8. Duncormick Trail
9. Kilmore Quay - Ballyteige Burrow Trail
10. Rosslare Harbour - Village Trail
11. Rosslare Harbour Cliff Top Walking Trail
12. Rosslare Strand - Sli na Slainte Circular
13. Rosslare Strand - Sli na Slainte Linear
14. Sli Charman

This map plots the existing Recreation Trails, Heritage Site Trails and Recreation Award Sites. The map tracks 14 existing walking trails, the EuroVelo and Norman Way routes.

It also maps the recreational awards secured in the district with:

- Blue Flag Beaches in Rosslare Strand and Carne
- Blue Flag Marina in Kilmore Quay
- Green Coast Awards in Rosslare Harbour, St Helen's, Ballyhealy and Cullenstown
- Community Green Flags in Rosslare Harbour, Our Lady's Island and Foulksmills
- The longest existing routes in the district are the Eurovelo 1 Route and the Norman Way



Wexford Eurovelo 1 Route

Starting at Rosslare Harbour Ferry, the Wexford Eurovelo 1 Route quickly takes cyclists to mainly quiet, scenic country roads and villages finishing at Ballyhack Ferry where you can continue on to Waterford. The route predominantly hugs the coastal roads and is a total of 120km of signed cycle route most of which is located in the Rosslare MD.



The Norman Way

The Norman Way is a heritage route that runs along the south coast of the county bringing the user to authentic medieval sites along the way which provide a better understanding of the Norman way of life in Ireland over 800 years ago. The route brings the user down quiet country lanes, in the beautiful seaside villages and alongside stunning beaches across the south coast of the Rosslare MD. The Norman Way has been heralded as a true tourism and recreation treasure of Ireland's Ancient East



The Sli Charman Route

The Sli Charman visits the dramatic side of the Rosslare MD coastline with the sea being a constant companion. The route traverses a contrast of country roads, boreens, stunning beaches and sand dunes. This coastal trail captures the wild and remote rugged coastline of the most south easterly tip of Ireland – a perfect trail for adventure lovers.

MAP 5 – Tourism & Recreation: Planned and Proposed Recreational Trails



Planned and Proposed Greenways Trails

- Bridgetown to Rosslare
- Rosslare Harbour to Rosslare Strand
- Murrinstown to Piercestown
- Rosslare Harbour to Rosslare Strand
- Wexford to Rosslare Strand
- Wexford to Pembroke/Pilgrim Way

Elevations

- Step Off Points
- Drop Off Points
- Drop Off Points

Routes

- Cycling Route
- Alternative Existing Route

The Norman Way

- Site
- Site
- Site

Route

- Cycling Route
- Alternative Existing Route

Celtic Properties

This maps seeks to provide a vision of the proposed and planned additional recreational trails for the district over the term of the strategic plan.

All proposals set out in the map are subject to landowner consents, planning and appropriate assessments and screening some of which are currently progressing.

Rosslare to Waterford Greenway Plans to move to planning consent for this project have been paused, pending the publication of the 'All-Ireland Rail Review', that will determine its future.

Rosslare Harbour to Rosslare Strand Greenway. Consultants have been appointed to review the route options for this proposed Greenway considering the significant coastal protection works which have been carried out by Irish Rail. It is planned to submit this section of Greenway to the Part 8 planning process in Q1 2024.

Wexford Town to Rosslare Strand Greenway. Consultants have been appointed to provide consultancy services for a feasibility study, route selection, preliminary design and environmental assessments for the development of this project. Constraints have been identified and ecological surveys are on-going. Public consultation on the preferred route corridor options was completed in 2022. The scoping and route options process is ongoing. It is now expected to submit to An Bord Pleanála for approval during 2024.

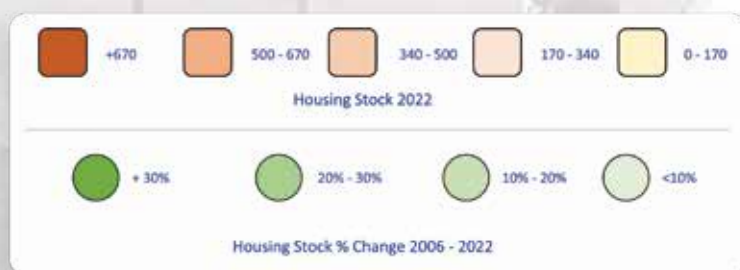
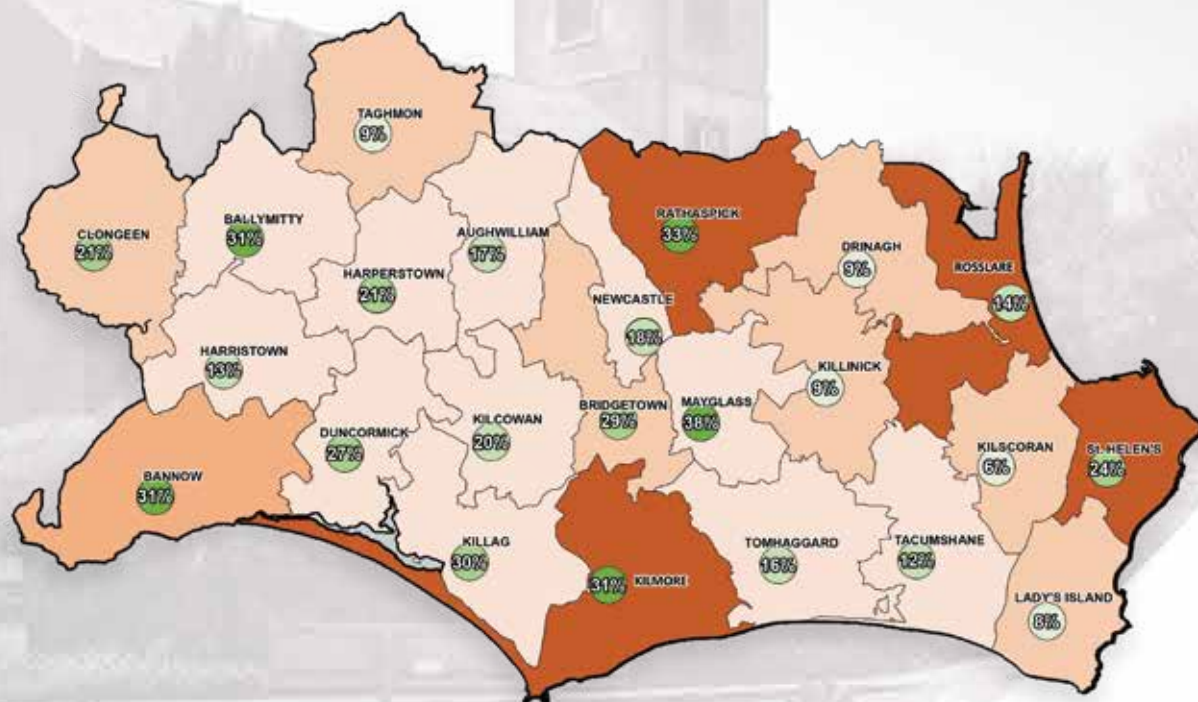
Bridgetown to Kilmore Quay. An initial feasibility study has been completed on the preferred route for this walkway. Landowner engagement is on-going and arrangements are being made to bring the proposal here through the relevant appropriate assessments to facilitate the statutory planning process. It is hoped to be progressed to a planning application in late 2023 or early 2024. There are also proposals to consider developing a further phase of this route which would see a connection from Bridgetown to Killinick and eventually to Rosslare Strand.

Piercestown to Murrinstown. This proposal is at the very early stages with the concept agreed. There is also a vision that this route would be eventually extended further to link into the Wexford to Rosslare Strand Greenway.

Wexford – Pembroke/Pilgrim Way. This trail follows the footsteps of St Aidan’s sixth century journey from Ferns to meet his mentor and teacher, St David in Wales. The route is characterised by wild Celtic landscapes and rich cultural heritage that continues to inspire musicians, poets and painters who live along its path. The route is a 260km (162 mile) journey with 3 stages of the route tracking through the Rosslare Municipal District.

MAP 6 - Housing: Housing Stock & Waste Water Services

Housing Stock and Growth between 2006 and 2022



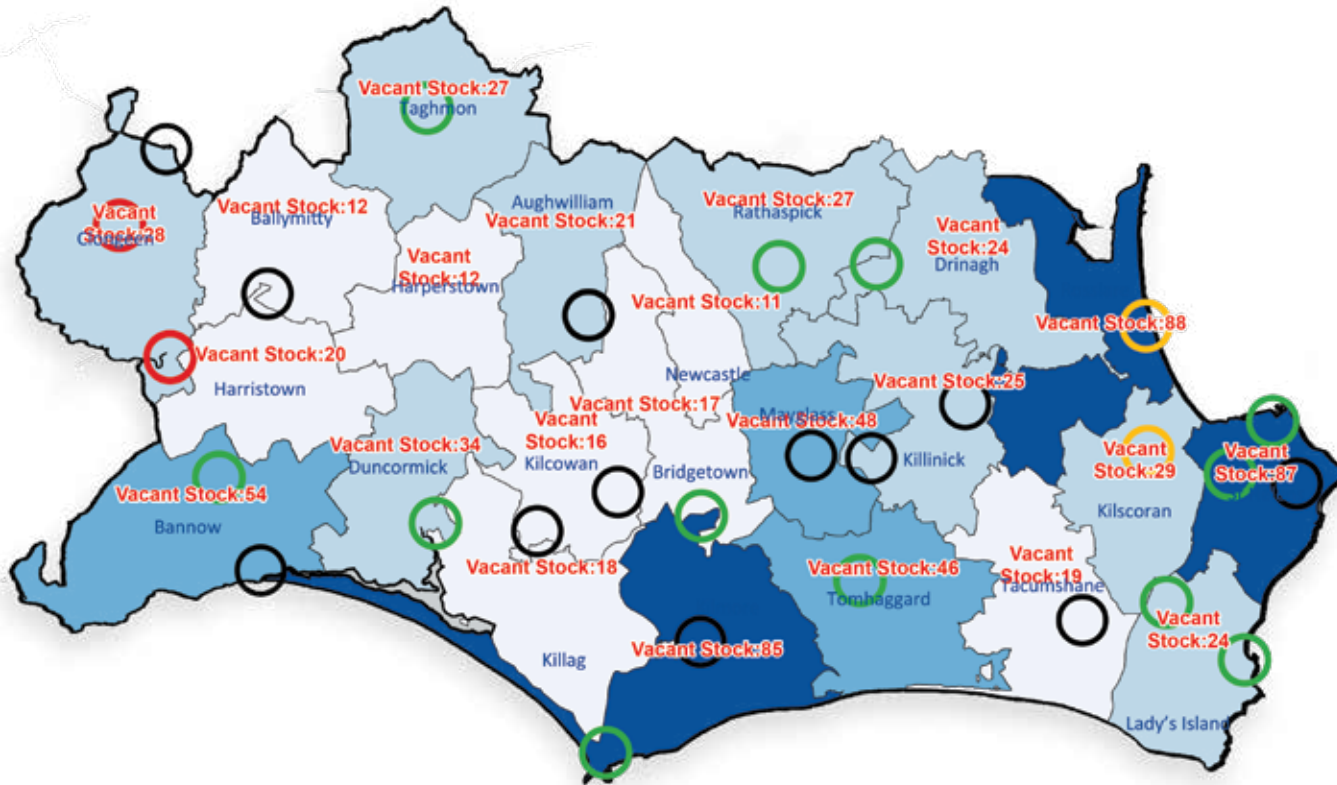
The colour coded background in this map provides an overview on the level of all housing stock in each ED in 2022 showing that:

- The largest level of housing stock is located in Rosslare, St Helen's, Kilmore and Rathaspick.
- The largest housing stock movement per ED between 2006 and 2022 was experienced in Mayglass at 38%.
- Other areas experiencing 30% or more growth in housing stock are Bannow, Ballymitty, Killag, Kilmore and Rathaspick.
- The lowest growth in housing stock was experienced in Kilsoran at 6% and others recording a less than 10% growth are Lady's Island, Drinagh, Killinick and Taghmon.

CSO 2016 data also provides information on home heating, with 71% of homes using oil heating compared to 40% nationally and 67% in County Wexford. 17% of houses in the district use coal for heating compared to 5% nationally.

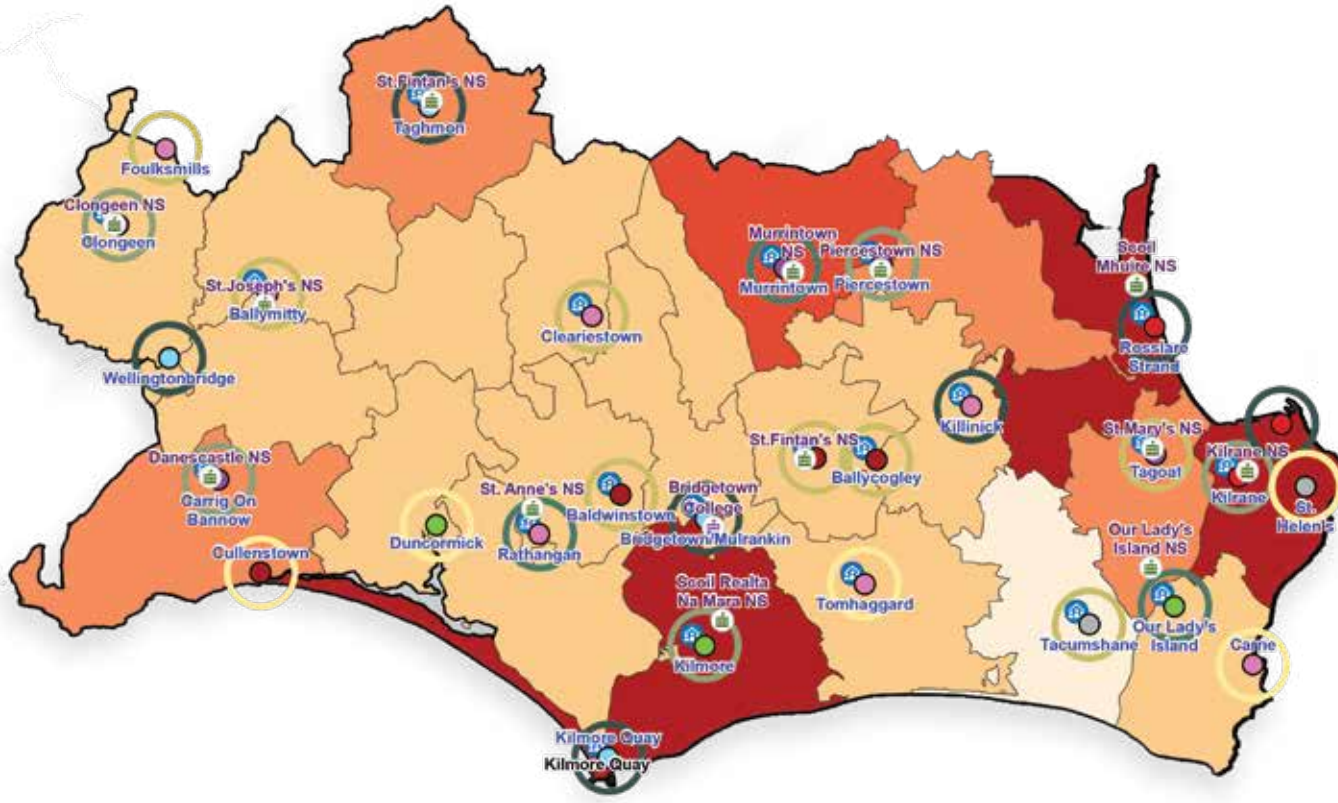
| Housing Stock Numbers | | | |
|-----------------------|----------|----------|-----|
| Census Year | Unit Nos | Movement | |
| 2006 | 9,586 | | |
| 2011 | 11,120 | 1,534 | 16% |
| 2016 | 11,095 | -25 | 0% |
| 2022 | 11,492 | 397 | 4% |
| Total | | 1,906 | 20% |

MAP-7 Housing: Vacant Housing and Waste Water Treatment Plants (WWTP) between 2006 and 2022



- The level of vacant housing stock (excluding holiday homes) as recorded by the CSO in census 2022 is mapped in the blue colour coding in this map. The CSO recorded a reduction in vacant housing stock in the district in the 5 years between 2016 (810) and 2022 (772).
- The highest level of vacant housing stock is recorded for Rosslare (88), St Helen's (87) and Kilmore (85).
- The lowest level of vacant housing stock is recorded in Newcastle (11), Ballymitty (12) and Harperstown (12).
- The percentage of vacant houses in the district is 7% of housing stock in 2022 compared to 8% nationally.
- The location of Uisce Éireann wastewater treatment plants (WWTP) is provided by the Green, Amber and Red rings and the black rings highlight the settlements where there are no Uisce Éireann WWTPs. The Green (Capacity), Amber (Medium Capacity) and Red (Very low or No capacity) colour denote capacity status within the WWTP.
- The stronger level of capacity is recorded in the Murrintown, Piercestown and Taghmon settlements which are all serviced by the main Wexford WWTP.
- There is also strong capacity in Kilmore Quay (as a result of the recent major WWTP development, due for commissioning in August 2023) and in Carrig on Bannow, Bridgetown, Rosslare Harbour and Kilrane.
- WWTPs in Wellingtonbridge and Tagoat are currently on the Small Towns & Villages Growth Programme (STVGP) with Uisce Éireann preparing outline design proposals for both sites.

MAP 8 – Community: Villages and Facilities



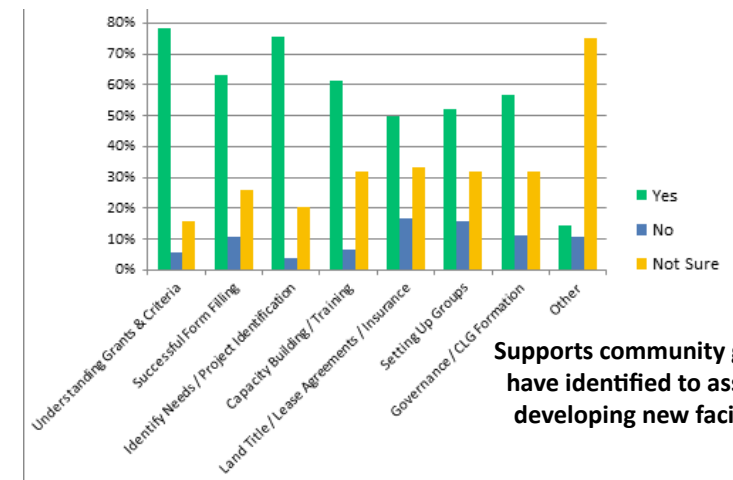
Community Survey Findings



Types of facilities in the Community Survey
 Pub, Café, ATM, Shop, Pharmacy, Post office, Playground, Sports Facilities, Daycare facilities older people & those with a disability, EV Charging Point, Community Centre, Community Childcare, Garage Filling Station

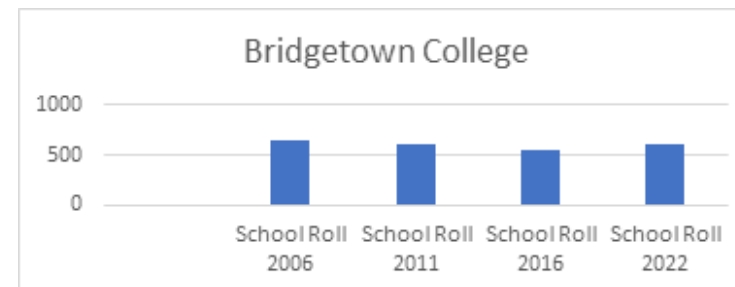
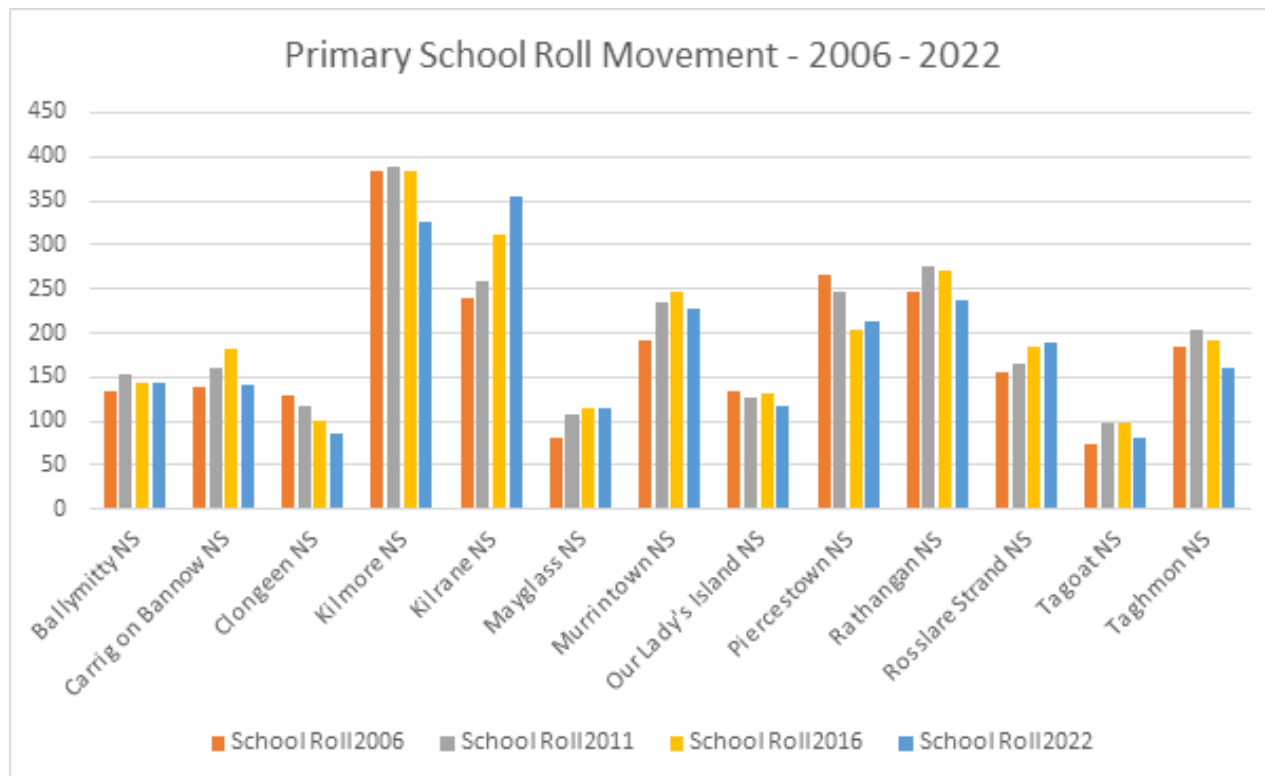
The villages facilities map combines a number of statistics including:

- Number of local services in the villages based on data gathered in the community surveys
- Location of the 13 Primary Schools and 1 Post Primary School
- Location of the Community Halls
- The County Development Plan classification of the village/settlement
- These data layers have been placed on the population 2022 database to give context to the demand for these services and where there is need for improved services.



Supports community groups have identified to assist in developing new facilities

Schools Profile in the District

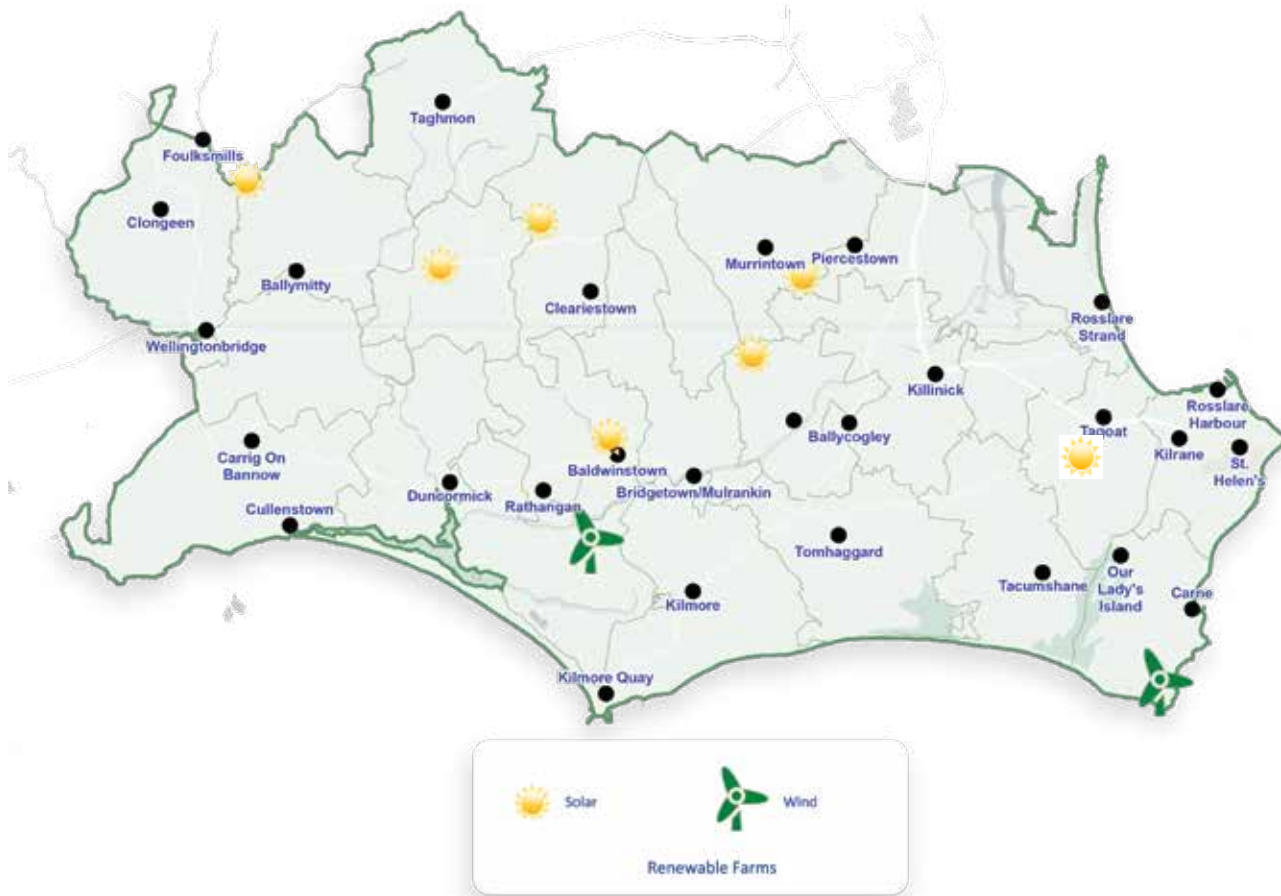


| School Roll Numbers RMD | | |
|-------------------------|--------------|--------------|
| Census Year | Primary | Post Primary |
| 2006 | 2,357 | 636 |
| 2011 | 2,533 | 597 |
| 2016 | 2,564 | 549 |
| 2022 | 2,395 | 604 |
| Total | 9,849 | 2,386 |

All primary schools and the post primary school in the district have experienced fluctuations in school roll numbers during the period 2006 to 2022, the most notable being:

- The sustained growth in numbers attending Kilrane primary school
- The decreasing pattern of reduced numbers over the 4 reporting periods in Clongeen
- The steady growth in numbers attending Rosslare and Mayglass Primary Schools
- The marked reduction in numbers in Kilmore recorded for 2022 compared to the three previous recorded periods

MAP 9 – Environment: Key Renewable Energy Sources- Existing and Planned



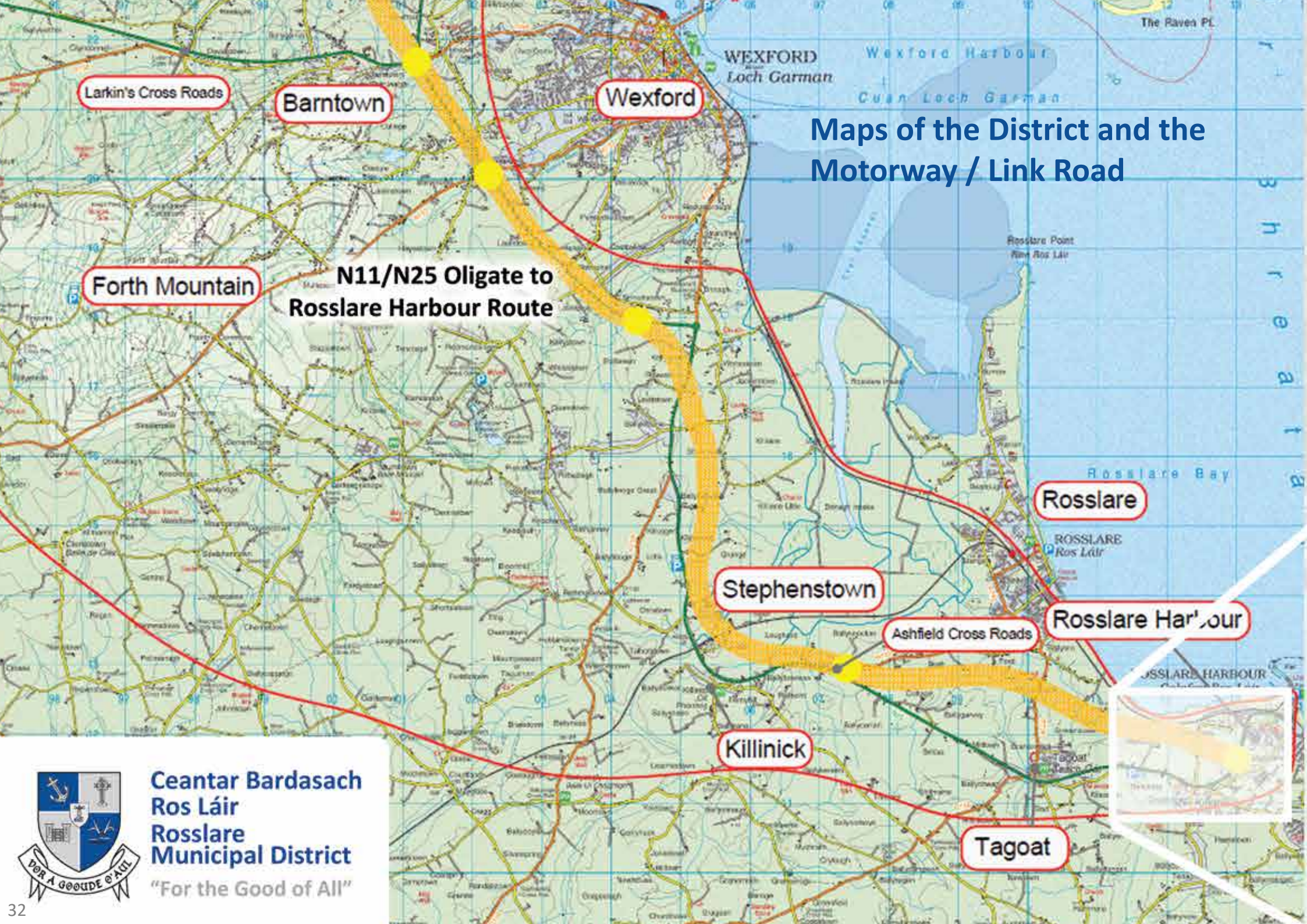
2 Windfarms in the district at Carne and Richfield (Kilmore)

7 Solar Farms in place or progressing to development

- Rosspile, Foulksmills
- Youngstown, Aughwilliam
- Dennistown, Milltown, Sallystown, Murntown Lower, Rathaspick
- Ralptown, Kilcowan
- Blusheens
- Rochestown, Harperstown
- Gardimus Great, Mayglass

A key feature of Renewable Energy Support Scheme (RESS) is that all renewable electricity generation projects (“RESS Projects”) must establish a Community Benefit Fund to be used for the wider economic, environmental, social and cultural well-being of the community living in close proximity to the renewable energy installation.

The contribution is set at €2 per Megawatt hour of generation of the RESS Project. This means there are real and quantifiable funds being made available annually for the benefit of the local community living in close proximity to renewable energy projects illustrated in the map.



Maps of the District and the Motorway / Link Road

Larkin's Cross Roads

Barntown

Wexford

Forth Mountain

N11/N25 Oligate to Rosslare Harbour Route

Stephenstown

Ashfield Cross Roads

Rosslare

Rosslare Harbour

Killinick

Tagoat



**Ceantar Bardasach
Ros Láir
Rosslare
Municipal District**
"For the Good of All"



MAP 10 – Public Infrastructure: Major Road Projects

Wexford County Council is working in association with Transport Infrastructure Ireland (TII) to develop an approximate 30km section of high-quality road which will link Rosslare Europort and Wexford with both Dublin via the M11 and Cork/Waterford via the N25. This is a strategically important part of the national transport network, and the project aims to ensure that the proposed road has the capacity and resilience to safely meet the future transport needs on a national, regional, and local level.

The current phase of the project is at the detailed planning and design stage. This involves further development of the scheme, including surveys, transport modelling, road and junction design, identifying the landtake required, and the preparation of an Environmental Impact Assessment (EIA). This design stage of the project will be completed in late 2023 or early 2024, following which the planning application will then be submitted to An Bord Pleanála.



N25 Rosslare Europort Access Road

The Rosslare Europort Access Road will provide safe, sustainable, and much improved access to Rosslare Europort. The new access road will also link with and complement the multimillion Euro port upgrade currently underway at Rosslare Europort. This will further secure the sustainability and competitiveness of this key transport link.

The planning application for the proposed scheme was submitted to An Bord Pleanála on the 5th of July 2022, with the decision expected during 2023. A positive decision will see work begin on this vital road infrastructure before or during 2025.





Section 4

High Level Goals

High Level Goals

Phase 1 of the development of the Strategic Plan for the Rosslare Municipal District is now nearing completion and the work completed to date has informed emerging goals which are set out in the following pages. These goals will inform Phase 2 which includes the setting of objectives and the more detailed planning, research, development and implementation of projects during the 7 year period of the plan, 2024 to 2030.

The six high level goals are set out under the banner of each of the Strategic Pillars that formed the foundation of the plan. The six pillars combine together, and reach across all aspects of society, to ensure everyone who lives, works, or visits the district experience positive benefits from the deliverables achieved through this strategic planning process.

This ambitious plan is setting out a journey that will allow the communities, elected members and executive of the Rosslare MD to 'Achieve Our Full Potential Together' through maximising our existing resources and un-tapped opportunities, thereby building on the strategic vision developed for the Rosslare MD.

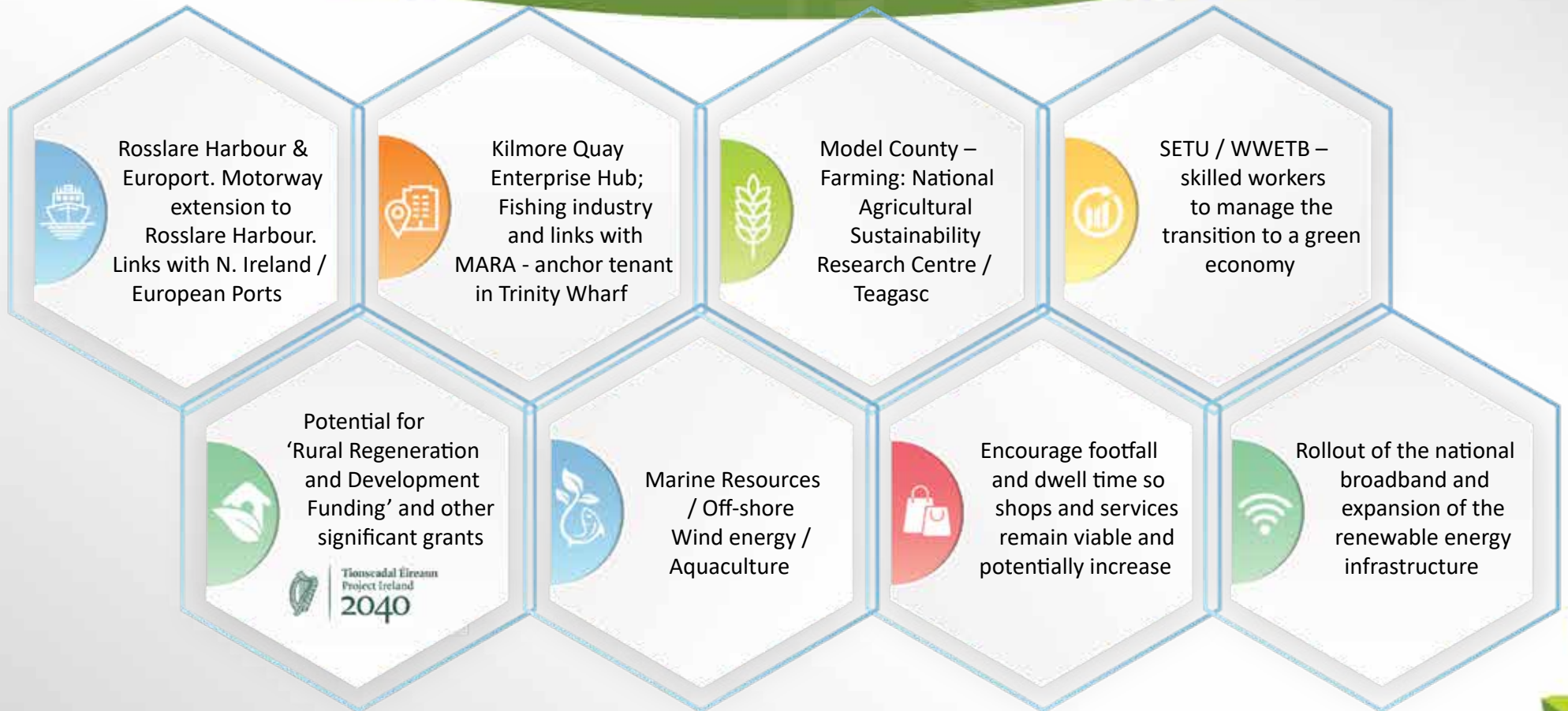




Goal 1

To optimise the economic opportunities in the Rosslare MD to support its sustainable development

Economic





Planned & Potential Tourism / Recreation Initiatives

Over-arching theme: Tourism Branding

| | | | | |
|--|---|--|--|--|
| Water Amenities Infrastructure | Greenways | Railway Line | Coastal Villages | Tourism Infrastructure |
| Bridgetown to Kilmore Quay blueway / greenway River Corock Blueway: Bannow Bay to Codd's Quay | Wexford to Rosslare Strand (spur to Piercestown). Rosslare Harbour to Rosslare Strand. Bridgetown to Rosslare (via Killinick) greenway | Rosslare Harbour to Waterford Railway Line: Option for shared use greenway in sections | Branding of the necklace of coastal tourism villages linked to Slí Charman / EuroVelo / Norman Way | Tourism offerings building on the Norman Way / EuroVelo / Heritage Sites |
| Tourism Accommodation | Coastal Beach Facilities | Twinning / European Links | Events / Festivals | Waterway & Marine Users |
| Solutions: Hotels, Campsites / Motorhomes etc. | Enhancement of beach access and facilities | Twinning, Schools Exchange, Cross-border & European cultural networks | Expand the event and festival offering in the District | Waterway activities, clubs and private providers Growth of tourism offerings linked to coastal water activities |



Goal 3

To research and deliver innovative housing solutions to serve the diverse needs of local people, promote the reuse of properties and efficiently deliver the Local Authority Housing for All Programme

Housing



Delivery of the Local Authority 'Housing for All Programme'

Work with WCC Housing Departments to pro-actively:

- Deliver the Social Housing Capital Programme and exceed government targets
- Support and assist applicants for the Local Authority Home Loan scheme (LAHL)

Potential and Innovative Solutions: Housing

- Group Waste Water Scheme options
- Sheltered Housing options for the elderly
- Movement on Vacant Properties
 - (772 vacant properties in the MD: 7% of housing stock)
 - Vacant House Grant: €50,000
 - Derelict House Grant: €70,000
 - Increased and improved focus on dereliction
 - Other potential reinstatement initiatives
- Pilot waste water schemes linking non-serviced areas to locations with capacity
- Developer Waste Water Scheme in locations where capacity is planned
- Explore potential opportunities with willow bed or reed bed systems
- Explore national innovations in delivering housing solutions in rural areas and pilot in the Rosslare MD
- Ensure new housing developments are linked to village settlements with footpaths and lighting
- Encourage Uisce Éireann to invest in settlements as per the County Development Plan settlement hierarchy



Sustainable Communities



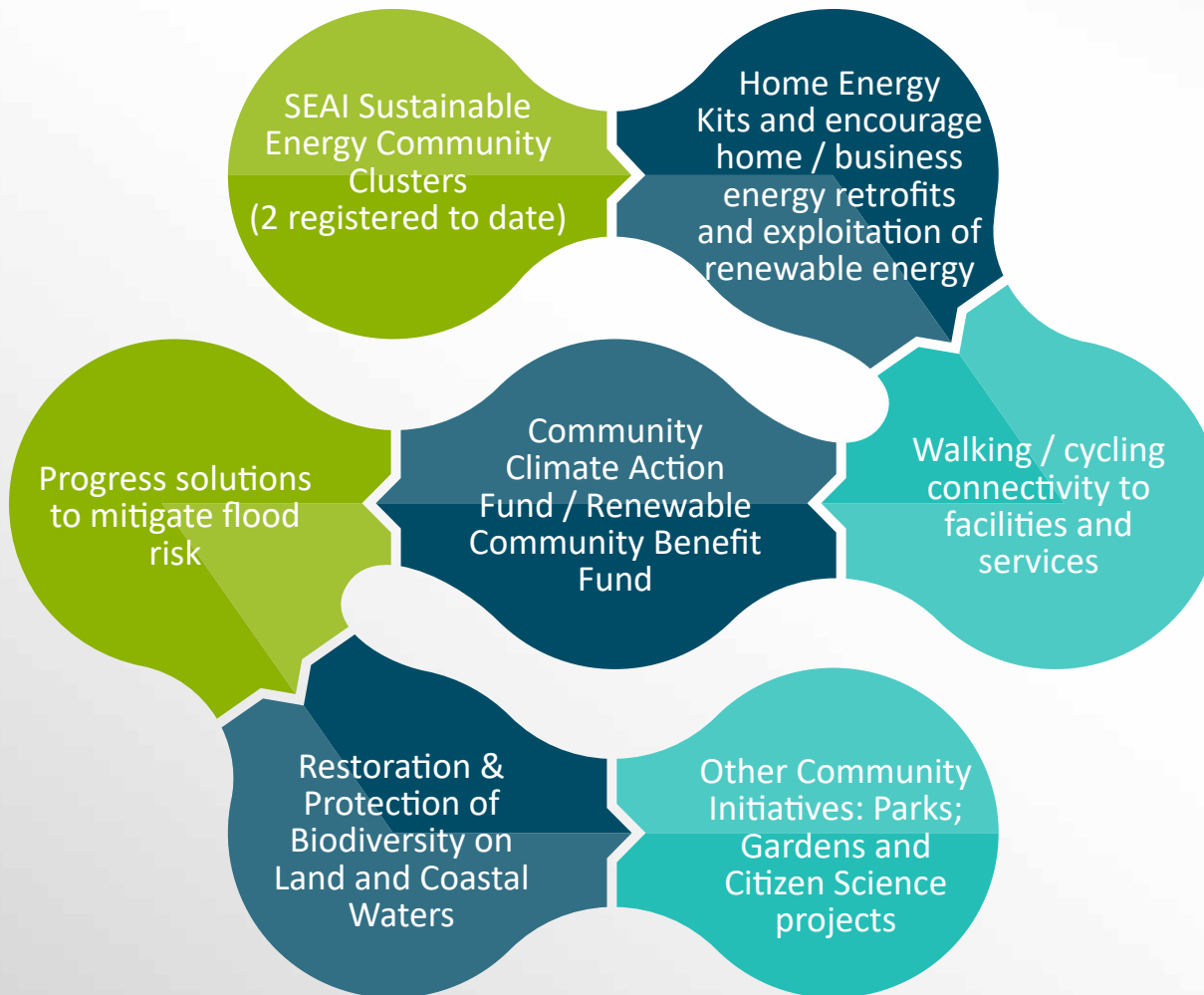


Goal 5

Supporting the transition towards, and implementation of, carbon neutrality and the protection and restoration of the natural environment

Environment / Climate Change

Delivery of Initiatives to meet the Climate Action Targets



Climate Action Fund 2023 Targets:

- 51% reduction in CO2 emissions by 2030
- Reduce the distance of car journeys by 20%
- Walking, cycling and public transport to account for 50% of our journeys
- 40% reduction in carbon emissions by 2030 in the residential sector
- 35% reduction on emissions by 2030 in the business / enterprise sector
- 25% reduction in emissions by 2030 in the farming sector



Public Infrastructure

Accessibility

Walkability audits of the larger villages



Public Amenities

Development of recreation amenity areas and fully accessible community buildings



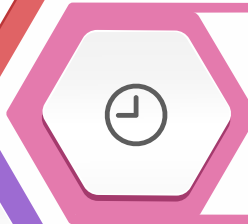
Age Friendly

Age Friendly infrastructure where appropriate



Public Transport

Collaborate with TFI Local Link Wexford to promote and enhance the public transport services



Active Travel Concept

Support the installation of footpaths, cycleways, EV charging points and bicycle storage facilities across the District



Connectivity

Enhancement of the Broadband network in the District



Promotion

Promote and market 'Active Travel' options to encourage a behavioural shift away from the car





Section 5

Implementation and Next Steps

Develop Proposals for engaging with relevant stakeholders with a view to strengthening partnerships and collaborations



Partnerships and Stakeholders: Examples of Current Supports

Wexford County Council

Amenity & Arts Grants

Residents Association Grants Scheme

Planting Grants

Grants Administered by Wexford County Council

Outdoor Recreation Infrastructure Scheme (ORIS) 2023

Measure 1

Measure 2

Measure 3

Project Development Measure

Up to €30,000

Up to €200,000

Up to €500,000

Up to €50,000

Walking, hillwalking, leisure cycling, Mountain Biking, Horse riding, Running, Orienteering, Rock climbing, Caving, Play in nature, Canoeing / Kayaking, Rowing, Wild swimming, Wind surfing / Kite surfing, Sailing, Diving, Angling, Stand Up Paddleboarding, Paragliding, Hang-gliding

Community Climate Action Fund 2023 (Upto €100,000)

Energy

Travel

Shopping / Recycling

Food & Waste

Climate & Environment

LED Community Lighting

Cycle Parking

Community Repair Hub

Community Composting

Mini Forests / Dispersed Orchards /

Small Community Renewable Projects / EV Charging Points

Community Electric Vehicles / Car Services

Swap Shops

Community Gardens

Forest Schools

Retrofitting Community Buildings

Safe or Active Travel to Schools

Water Filling Stations

Allotments

Community Gardens / Roof Gardens

Single Use Plastic Elimination

Food Markets / Community Fridges

Pollinator Projects / Climate Resilience Projects

Local Enterprise Office: Wexford

Energy Efficiency Grants

Feasibility Study Grants

Business Expansion Grants

Priming Grant

Technical Assistance for Micro Exporters

Agile Innovation Fund

Trading Online Voucher

Training / Mentoring

Other Grants

LEADER (Opening Autumn 2023-2028)

Training

Feasibility Studies

Capital Investment

SICAP: Target Communities

Rosslare Harbour

Taghmon

Bridgetown

Travellers

Early School Leavers

Ukrainian Refugees

International Asylum Seekers

Community Centre Investment Fund

New Build Centres

Investment in Up-Grading existing Community Facilities

RRDF (Category 1 Calls Open November 2023) Capital Investment. Typical Minimum Investment is €500,000 – No upper limit

Investment to support rural renewal, strengthen and build resilience in rural communities and assist in the regeneration of towns and villages with a population of less than 10,000, and outlying areas.

Sports Capital and Equipment Programme

Development or refurbishment of sports facilities and the provision of sports equipment. It is part funded from the proceeds of the National Lottery.

SEAI

SEC Mentor Support

Energy Master Plan

Better Energy Community Grants

Home Energy Retrofit Grants

One Stop Shop

Individual Grants

Business Grants

Energy Audit Vouchers

Business Grants

Employment Support Schemes

Community Employment (CE) Schemes

TÚS Programme: Wexford Local Development

Rural Social Scheme (RSS): Wexford Local Development

Community Services Programme: POBAL

Would you like to make a submission?



The consultation process for the Rosslare MD Strategic Plan 2024 -2030 remains available to those still wishing to make a submission. You can make a written submission up to **Friday 1st September**. After that date we will be finalising the plan and progressing to the implementation stage.

If you do want to make a submission you can do so in one of the following ways:

- Via Wexford County Council's On Line Consultation Portal at <https://consult.wexfordcoco.ie>
- By email to rosslaremunicipaldistrict@wexfordcoco.ie
- In writing to the District Manager, Rosslare Municipal District, County Hall, Carricklawn, Wexford Y35WY93.

Submissions must be in writing and all written submissions received during this final consultation phase will be considered before the Strategic Plan is finalised in September 2023.

Please remember to:

- Include your name and contact details in case we need to contact you to get more details on your submission.
- Confirm if you consent to your name being included on the list of submissions that may be submitted to the elected members for consideration in the context of changes to the Strategic Plan.

Please note that your personal information including your contact details will not be used or shared for any purpose other than matters relating to the submission you have made in relation to the Rosslare MD Strategic Plan.

Acknowledgements

We would like to express our sincere gratitude to all the communities and stakeholders that have engaged with us to this point and we very much welcome all additional submissions and consultations over the next 8 weeks. A full list of consultees will be included in the final version of the Strategic Plan.

Rosslare Municipal District Team - Our Elected Members



Ger Carthy

Party: Non Party
District: Rosslare Municipal District
Phone: 087 6255934
Email: ger.carthy@wexfordmcc.ie
Address: Airdownes, Ladys Island, Co. Wexford



Lisa McDonald

Party: Fianna Fáil
District: Cathaoirleach, Rosslare Municipal District
Phone: 087 9184034
Email: lisa.mcdonald@wexfordmcc.ie
Address: Bearswood, Murrintown, Co. Wexford



Jim Codd

Party: Aontu
District: Rosslare Municipal District
Phone: 087 6107083
Email: jim.codd@wexfordmcc.ie
Address: Aughnagan, Taghmon, Co. Wexford



Jim Moore

Party: Fine Gael
District: Rosslare Municipal District
Phone: 087 2858278
Email: jim.moore@wexfordmcc.ie
Address: Cionna, Kilmore Quay, Co. Wexford



Frank Staples

Party: Fine Gael
District: Leas-Chathaoirleach, Rosslare Municipal District
Phone: 086 2305050
Email: frank.staples@wexfordmcc.ie
Address: Cregg, Ballycogley, Co. Wexford

Rosslare Municipal District Contacts

District Manager: Nóirín Cummins:
Staff Officer: Dean Waters:
RMD Office Contact Number: 053 919 6000

This number should be used at all times (office hours, for out of hours emergencies including evenings and weekends).



Credits:

© Wexford County Council

Published by Rosslare Municipal District,

Wexford County Council, County Hall, Carricklawn, Wexford.

Telephone: 053 919 6000

Email: rosslaremunicipaldistrict@wexfordcoco.ie

Report prepared by: Dr Yvonne Byrne Rural Development Consultancy Ltd

Graphic Design by: Graphedia.com

Printed by: Creative Design & Print

Mapping courtesy of: ICT Department WCC

