

Trinity Wharf Wexford Masterplan



Trinity Wharf Wexford Masterplan

Public Information Leaflet

Wexford County Council is currently planning the development of Trinity Wharf as a key part of the town's economic development and urban regeneration.

A project team has been appointed and are preparing design proposals to be submitted to An Bord Pleanála for approval later this year.

The draft masterplan proposes a new sustainable urban quarter with a high-quality public realm, mix of modern office space, hotel accommodation, multi-storey car parking, a landmark cultural and events building and 60 residential units. The proposed development also includes the provision of a 61 berth marina and a new boardwalk linking Trinity Wharf with Paul Quay and the Crescent.

Wexford County Council estimate that Trinity Wharf has the potential to provide over 1,000 jobs in the technology and financial services sectors over the next five to ten years.



Trinity Wharf Wexford Masterplan

Have Your Say

Wexford County Council would like to hear from you and invites you to view the draft Masterplan, ask questions, make comments and give us your feedback of this ambitious multi-million euro project.

Public Information Evening:

Wednesday 5th September
Pike Room, Talbot Hotel
4pm to 8pm

Public Display:

Thursday 6th to Friday 14th September
County Hall,
Wexford

Wexford County Council Website:

Wednesday 5th September to Friday 14th September

View the draft Masterplan and drawings online at:

www.wexfordcoco.ie/business/economic-development-projects/trinity-wharf-development

Comments on the proposed Trinity Wharf development can also be made, no later than 5pm on Friday 14th September, through any one of the following:



In writing, marked 'Trinity Wharf development' to:
Special Projects Office, Wexford County Council, County Hall, Carricklawn, Wexford Y35 WY93



By email, with the subject 'Trinity Wharf development' to:
specialprojects@wexfordcoco.ie



By electronic submission by filling the online form at:
www.wexfordcoco.ie/trinitywharfconsultation

All comments received will be considered during the ongoing design process.



Trinity Wharf Wexford Masterplan

What Happens Next

- The Design Team will complete the environmental and technical assessments, surveys and investigations required for the project;
- The Design Team will develop, modify and finalise the master plan taking into account the comments and submissions received as part of this process;
- The Design Team will prepare applications for development and foreshore consent;
- Wexford County Council will submit an application for development consent to An Bord Pleanála;
- Wexford County Council will submit an application for foreshore consent to Department of Housing, Planning & Local Government (DHPLG)

| Programme | Date/Time |
|---|--|
| Public Information Event | 4pm - 8pm Wednesday 5 th September 2018 |
| Public Information Period | Wednesday 5 th - Friday 14 th September 2018 |
| Design Development and Environmental Assessments | Ongoing - October 2018 |
| Finalise Consent and Foreshore Applications to An Bord Pleanála and DHPLG | November 2018 |



Trinity Wharf Stage 2 Masterplan



- | | | |
|-----------|---|---------------------|
| 1 | OFFICE BUILDING: (5 Storey) | 4,600m ² |
| 2 | HOTEL: (120 Bedrooms - 6 Storey) | 9,200m ² |
| 3 | CAFÉ / RESTAURANT / RETAIL: (2 Storey) | 1,220m ² |
| 4 | CULTURAL BUILDING: (2 Storey) | 2,600m ² |
| 5 | OFFICE BUILDING: (5 Storey) | 6,175m ² |
| 6 | HQ / OFFICE BUILDING: (5 Storey) | 5,450m ² |
| 7 | RESIDENTIAL: (60 Apartments - 5 Storey) | 6,250m ² |
| 8 | CAR PARK: (540 spaces) | |
| 9 | LEVEL CROSSING | |
| 10 | MAIN PUBLIC SQUARE | |
| 11 | PEDESTRIAN / CYCLE LINK | |
| 12 | MARINA (61 Berths) | |



Site Context



Site Layout - Ground Level



Bird's Eye View from West

Trinity Wharf Stage 2 Masterplan



Trinity Wharf Stage 2 Masterplan



Trinity Wharf Stage 2 Masterplan



Trinity Wharf Stage 2 Masterplan



Trinity Wharf Stage 2 Masterplan



Trinity Wharf Stage 2 Masterplan



Landscape Character and Materials



1 Exposed Aggregate



2 Stone Paving



3 Shared Surface



4 Flip Rap Stone



5 Event Space



6 SUDS and Informal Planting



Coastal Seating



Planters with Seating



Planters



Screening Wooded 'Glades'



Raised Planter 'Glades'



Emergent Planting



Malus baccata



Malus pumila



Amelanchier canadensis



Ulmus pumila



Quercus robur



Pinus sylvestris



Corylus avellana



Hawthorn



Ulmus pumila



Shrub Planting



NOTES

1.

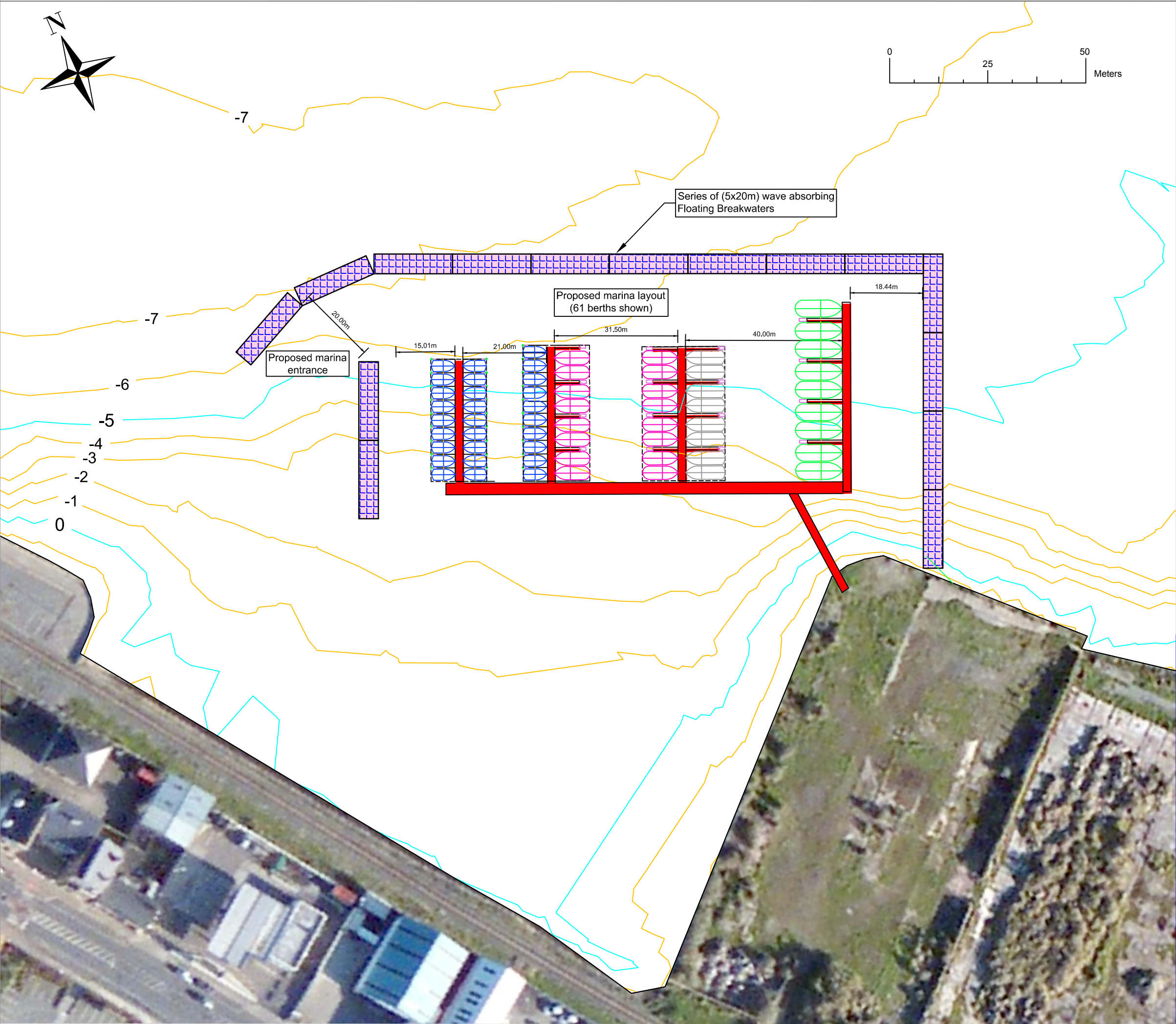
Verifying Dimensions.
The contractor shall verify dimensions against such other drawings or site conditions as pertain to this part of the work.
2.

Existing Services.
Any information concerning the location of existing services indicated on this drawing is intended for general guidance only. It shall be the responsibility of the contractor to determine and verify the exact horizontal and vertical alignment of all cables, pipes, etc. (both underground and overhead) before work commences.
3.

Issue of Drawings.
Hard copies, dwf and pdf will form a controlled issue of the drawing. All other formats (dwg, dxf etc.) are deemed to be an uncontrolled issue and any work carried out based on these files is at the recipient's own risk. RPS will not accept any responsibility for any errors arising from the use of these files, either by human error by the recipient, listing of un-dimensioned measurements, compatibility issues with the recipient's software, and any errors arising when these files are used to aid the recipient's drawing production, or setting out on site.
4.

Datum. Ordnance Datum Main
All measurements specified to metres unless otherwise stated

| | | | |
|--|------------|---------------|----------------|
| rev | amendments | drawn | date |
| <div><div>RPS</div><div>Elmwood House 74 Boucher Road Belfast BT12 6RZ</div><div>T +44 (0) 28 90 667914 F +44 (0) 28 90 668286 W www.rpsgroup.com/ireland E ireland@rpsgroup.com</div></div> | | | |
| Client | | | |
| Wexford County Council | | | |
| Project | | | |
| Trinity Wharf Feasibility Study | | | |
| Title | | | |
| Proposed Marina Layout Plan view in Estuary Mouth - | | | |
| Drawing Status | Sheet Size | Drawing Scale | |
| Preliminary | A1 | 1:2500 | |
| Drawing Number | | Rev | |
| IBE / 1115 | | Rev02 | |
| Project Leader | Drawn By | Date | Initial Review |
| AKB | - | 23/07/2018 | AKB |



NOTES

- Verifying Dimensions.**
The contractor shall verify dimensions against such other drawings or site conditions as pertain to this part of the work.
- Existing Services.**
Any information concerning the location of existing services indicated on this drawing is intended for general guidance only. It shall be the responsibility of the contractor to determine and verify the exact horizontal and vertical alignment of all cables, pipes, etc. (both underground and overhead) before work commences.
- Issue of Drawings.**
Hard copies, dwf and pdf will form a controlled issue of the drawing. All other formats (dwg, dxf etc.) are deemed to be an uncontrolled issue and any work carried out based on these files is at the recipients own risk. RPS will not accept any responsibility for any errors arising from the use of these files, either by human error by the recipient, listing of un-dimensioned measurements, compatibility issues with the recipient's software, and any errors arising when these files are used to aid the recipients drawing production, or setting out on site.
- Datum:** Ordnance Datum Malin
All measurements specified to metres unless otherwise stated

12m Vessels (x9)

10m Vessels (x8)

9m Vessels (x16)

6m Vessels (x28)

Pre-fabricated Floating Breakwaters

Marina walkway and Pontoons

| rev | amendments | drawn | date |
|-----|------------|-------|------|
| | | | |

Elmwood House
74 Boucher Road
Belfast
BT12 6RZ

T
F
W
E

+44 (0) 28 90 667914
+44 (0) 28 90 668286
www.rpsgroup.com/ireland
ireland@rpsgroup.com

Client

Wexford County Council

Project

Trinity Wharf
Feasibility Study

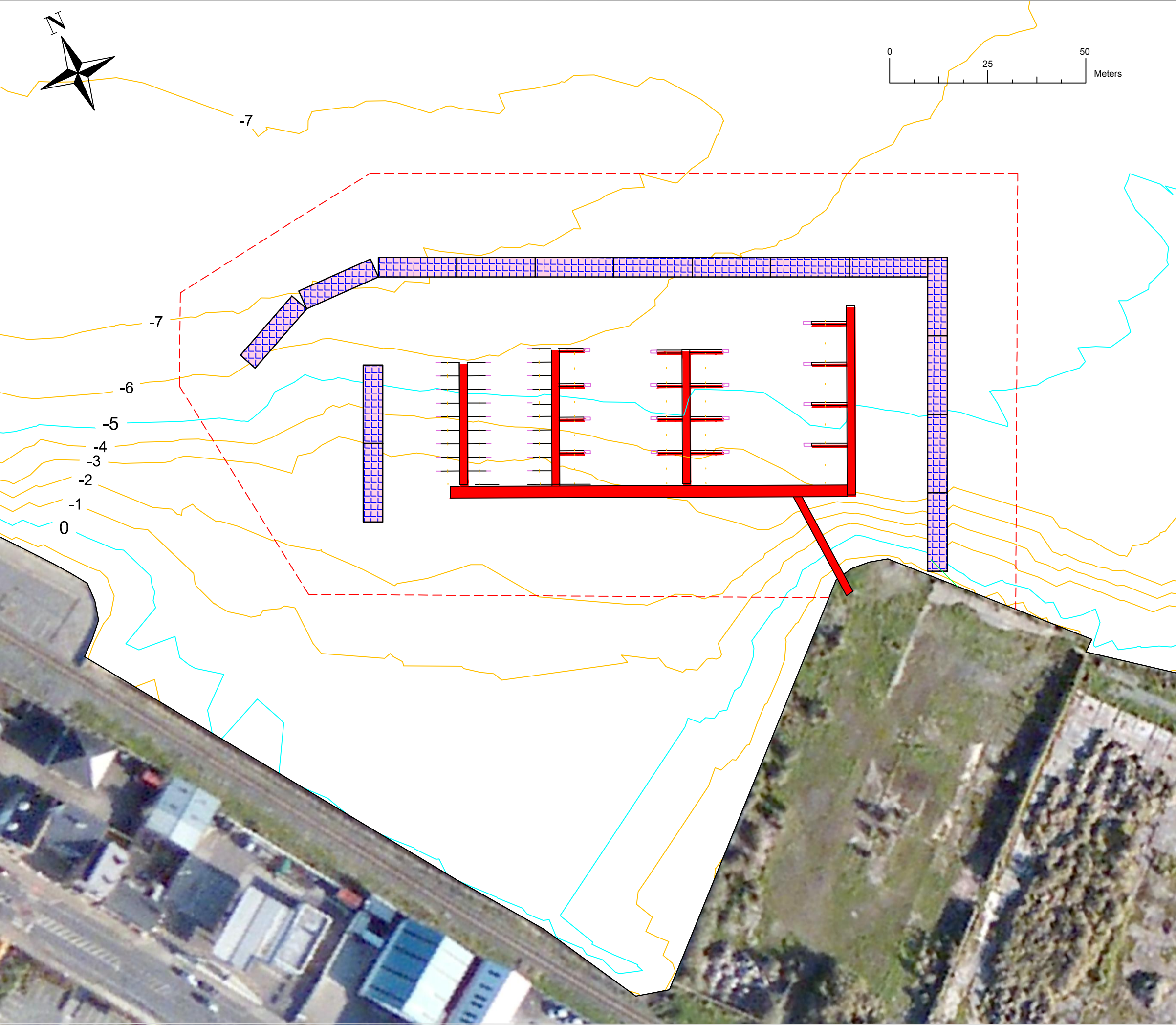
Title

Proposed Marina Layout
Plan View
-

| | | |
|----------------|------------|---------------|
| Drawing Status | Sheet Size | Drawing Scale |
| Preliminary | A3 | 1:1000 |

| | |
|----------------|-------|
| Drawing Number | Rev |
| IBE /1115 | Rev02 |

| | | | |
|----------------|----------|------------|----------------|
| Project Leader | Drawn By | Date | Initial Review |
| AKB | KC | 23/07/2018 | AKB |



NOTES

1.

Verifying Dimensions.
The contractor shall verify dimensions against such other drawings or site conditions as pertain to this part of the work.

2.

Existing Services.
Any information concerning the location of existing services indicated on this drawing is intended for general guidance only. It shall be the responsibility of the contractor to determine and verify the exact horizontal and vertical alignment of all cables, pipes, etc. (both underground and overhead) before work commences.

3.

Issue of Drawings.
Hard copies, dwf and pdf will form a controlled issue of the drawing. All other formats (dwg, dxf etc.) are deemed to be an uncontrolled issue and any work carried out based on these files is at the recipients own risk. RPS will not accept any responsibility for any errors arising from the use of these files, either by human error by the recipient, listing of un-dimensioned measurements, compatibility issues with the recipient's software, and any errors arising when these files are used to aid the recipients drawing production, or setting out on site.

4.

Datum: Ordnance Datum Malin
All measurements specified to metres unless otherwise stated

+10m footprint of Restraint System

Marina walkway and Pontoons

| rev | amendments | drawn | date |
|-----|------------|-------|------|
| | | | |

RPS

Elmwood House
74 Boucher Road
Belfast
BT12 6RZ

T
F
W
E

+44 (0) 28 90 667914
+44 (0) 28 90 668286
www.rpsgroup.com/ireland
ireland@rpsgroup.com

Client

Wexford County Council

Project

Trinity Wharf
Feasibility Study

Title

Proposed Marina Layout
Chain Mooring System
Seabed Area Requirement

| | | |
|----------------|------------|---------------|
| Drawing Status | Sheet Size | Drawing Scale |
| Preliminary | A3 | 1:1000 |

| | |
|----------------|-------|
| Drawing Number | Rev |
| IBE /1115 | Rev02 |

| | | | |
|----------------|----------|------------|----------------|
| Project Leader | Drawn By | Date | Initial Review |
| AKB | KC | 23/07/2018 | AKB |



