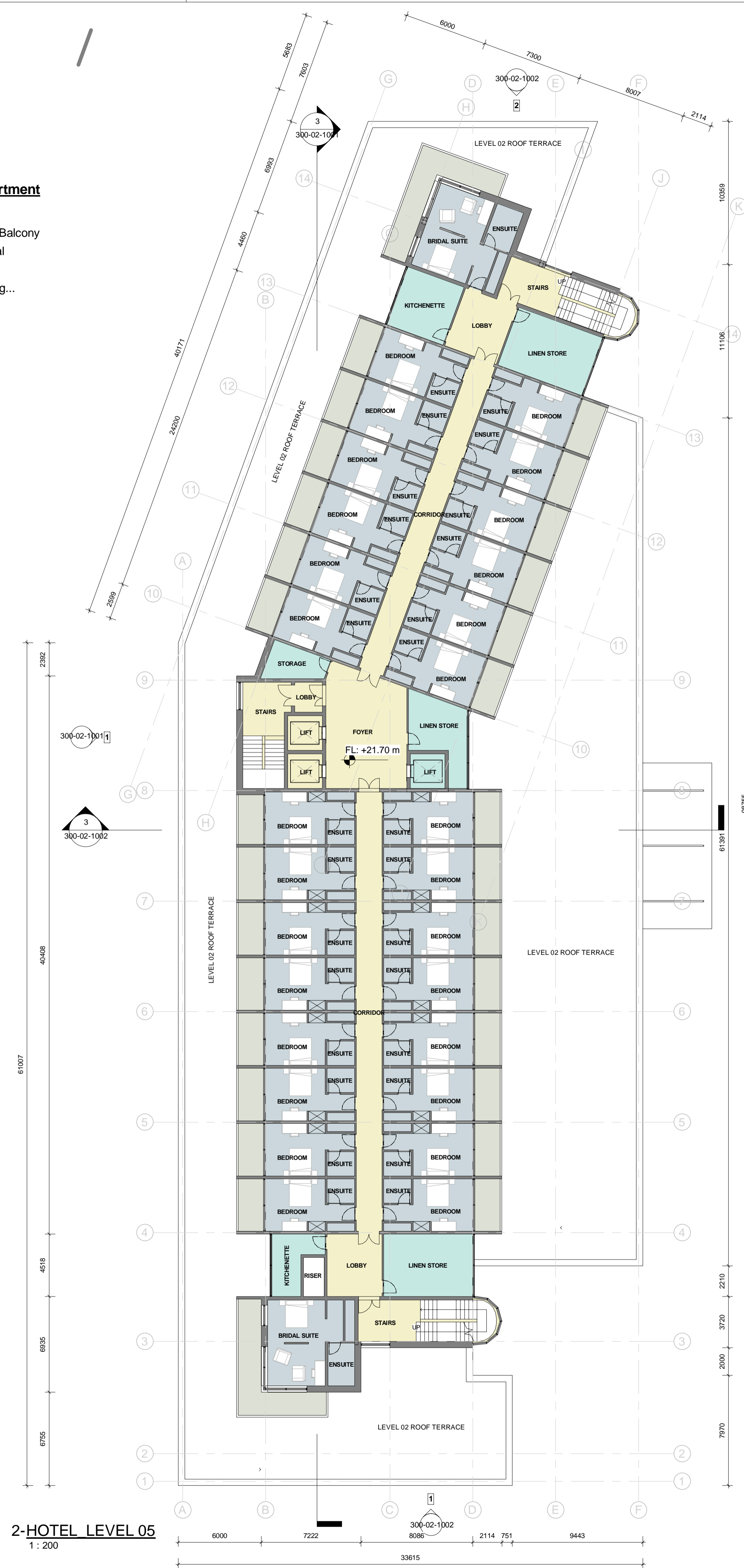




1-HOTEL LEVEL 04
1 : 200

Room Department

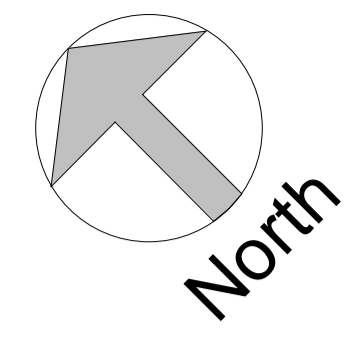
- Bedroom
- Bedroom Balcony
- Communal
- Staff
- Calculating...



2-HOTEL LEVEL 05
1 : 200

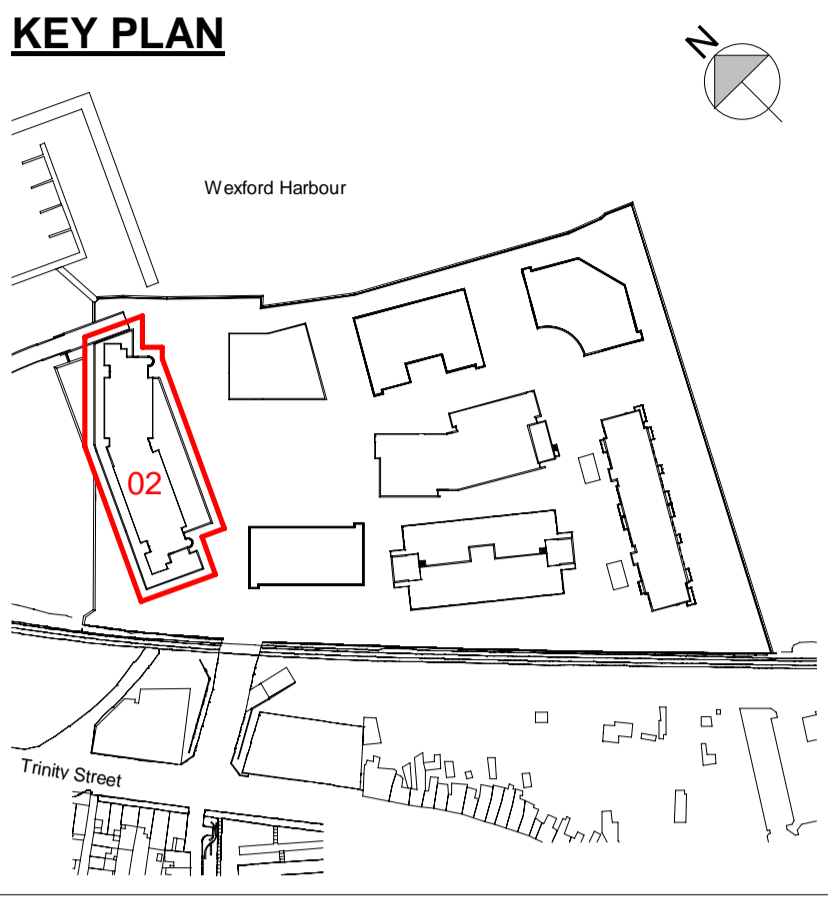
Room Department

- Bedroom
- Bedroom Balcony
- Communal
- Staff
- Calculating...



Copyright. All Rights Reserved.
This work is copyright and cannot be produced or copied in any form or by any means (graphic, electronic or mechanical including photocopying) without the written permission of the originator. Any intent, express or implied, to use this document for any purpose whatsoever is restricted to the terms of the agreement or implied agreement between the originator and the instructing party.

Levels and contours are relative to an Ordnance Survey Datum
Figured dimensions in millimetres.



02_Hotel - Gross Floor Area (GFA)

Level	Area
HOTEL LEVEL 00	2155 m ²
HOTEL LEVEL 01	2689 m ²
HOTEL LEVEL 02	1260 m ²
HOTEL LEVEL 03	1260 m ²
HOTEL LEVEL 04	1260 m ²
HOTEL LEVEL 05	1260 m ²
HOTEL PLANT	57 m ²
TOTAL GROSS AREA:	9941 m²

Open Roof Plant Area Only

208 m ²

REVISION SCHEDULE

NO.	DATE	DESCRIPTION
P01	2019.02.07	Issued for Planning

**Mixed Use Development
Trinity Wharf Wexford**

CLIENT
Wexford County Council
County Hall, Carricklawn, Wexford.
Y55 WY93
Tel: 053 919 6000
Web: www.wexfordcoco.ie



STW
Scott Tallon Walker
ARCHITECTS
19 Merrion Square, Dublin 2, Ireland
Tel: +353 (0)1 669 3000
Email: mail@stwarchitects.com
Web: www.stwarchitects.com

DRAWING
HOTEL_PLANS_SHEET 3 OF 4

SCALE @A1 1 : 200	ISSUED: 2019.02.07
DRAWN BY: TH	CHECKED BY: PJ
PROJECT NO. 15058	PROJECT ARCHITECT: Philip Jackson
DRAWING NO. TWW-STW-00-ZZ-DR-A-200-02-1003	REVISION P01