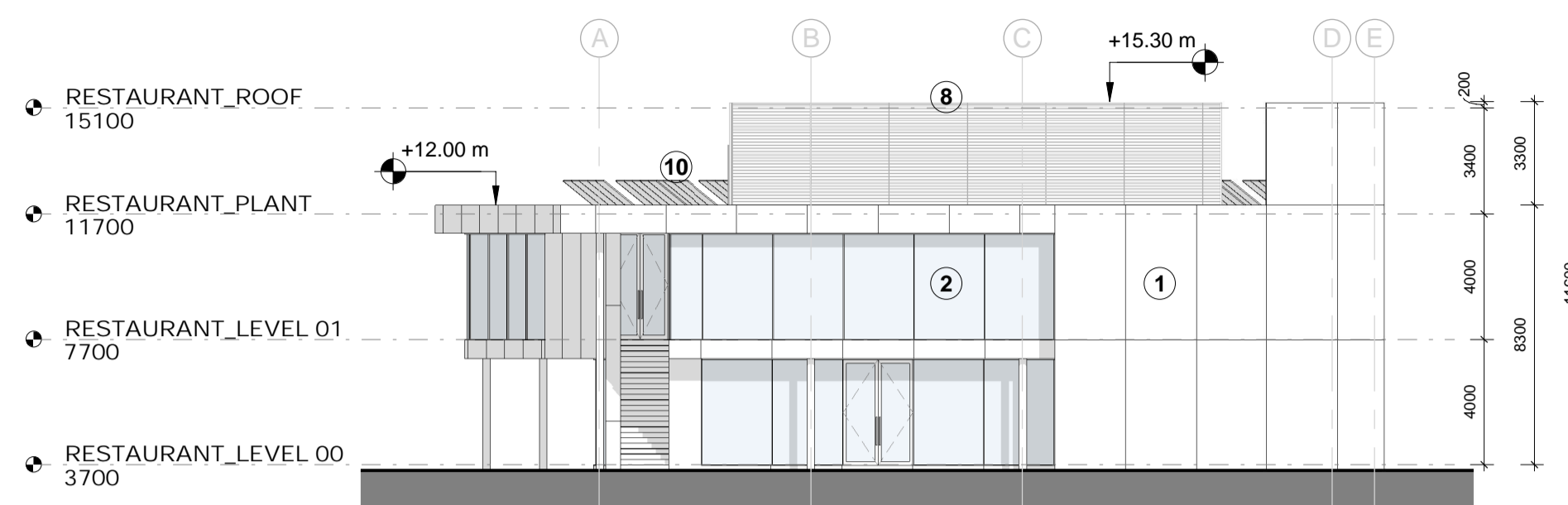
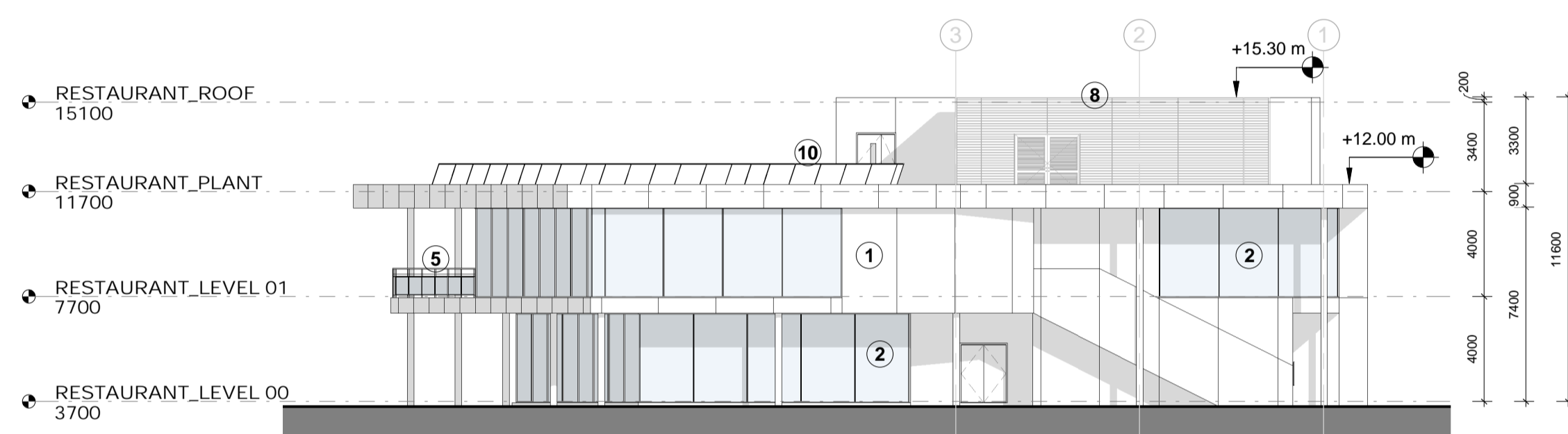


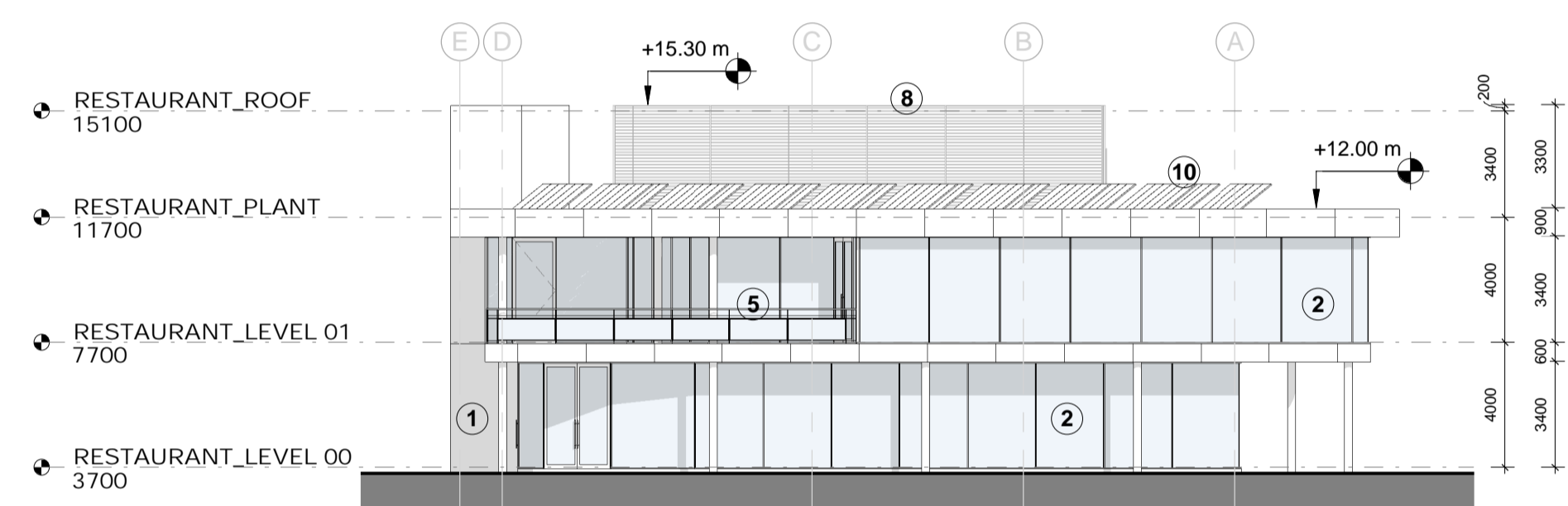
1-RESTAURANT SOUTH WEST ELEVATION
1 : 200



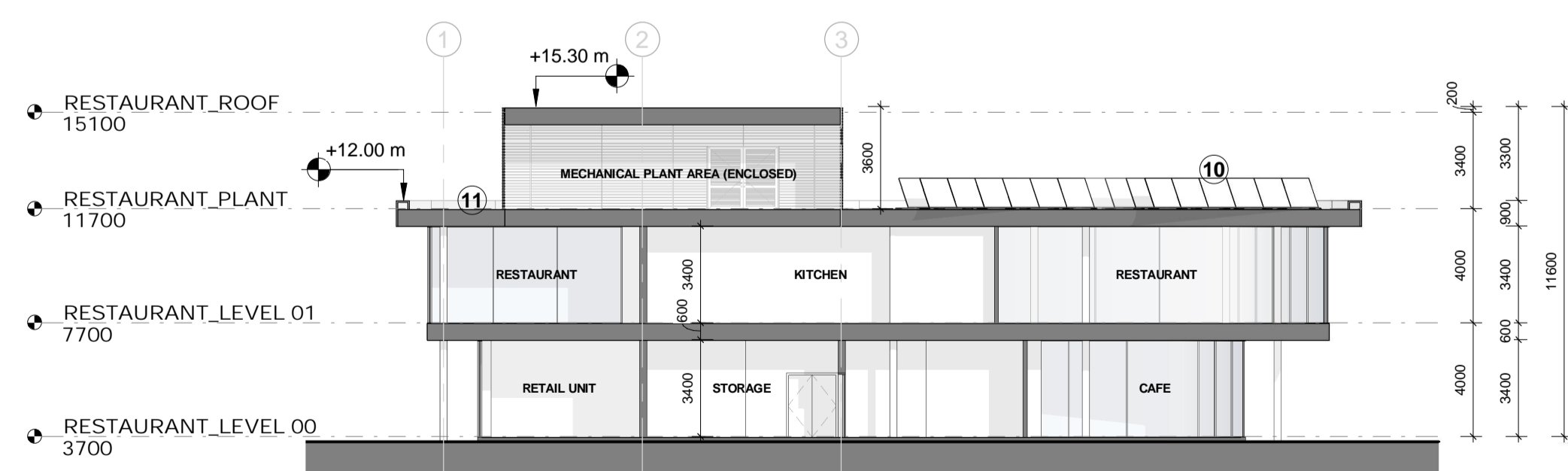
2-RESTAURANT NORTH WEST ELEVATION
1 : 200



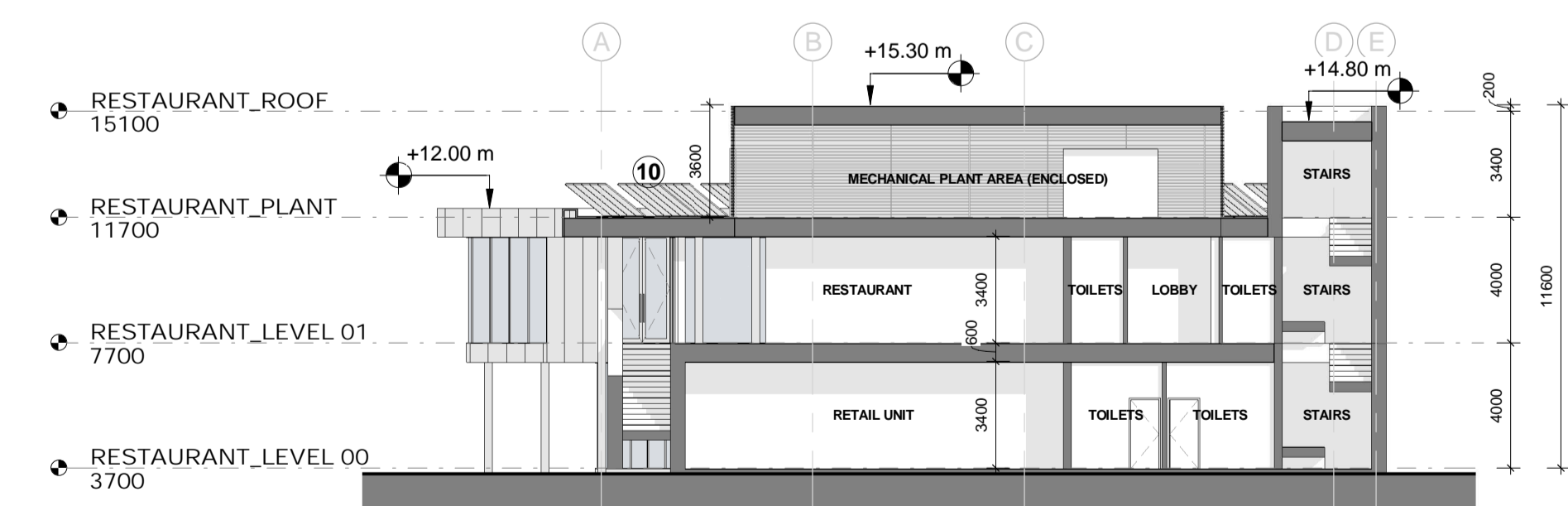
3-RESTAURANT NORTH EAST ELEVATION
1 : 200



4-RESTAURANT SOUTH EAST ELEVATION
1 : 200

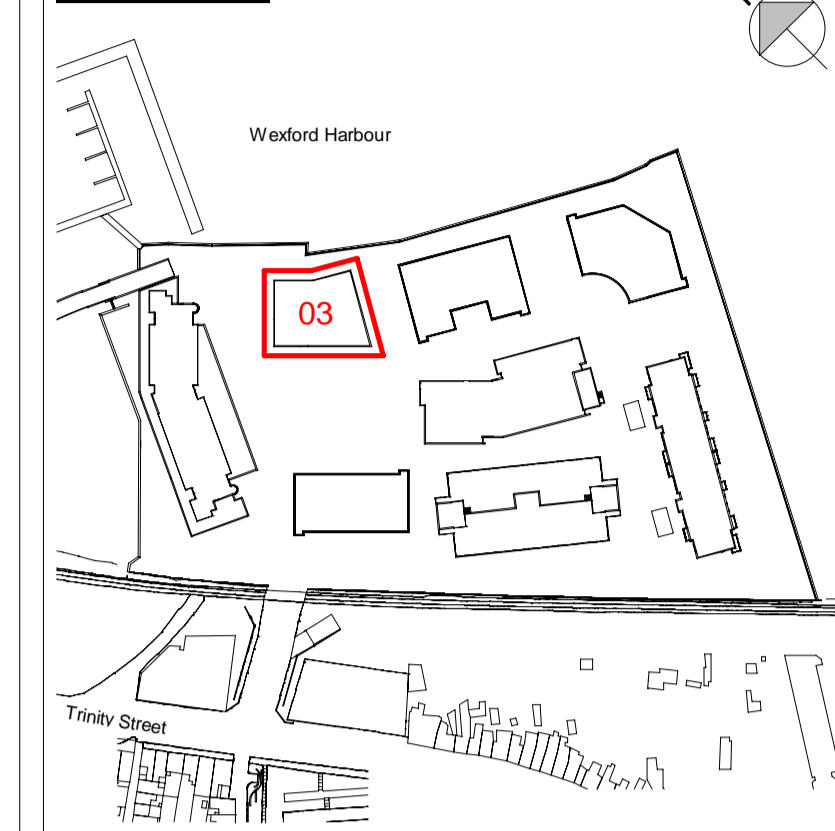


5-RESTAURANT SECTION 1
1 : 200



6-RESTAURANT SECTION 2
1 : 200

KEY PLAN



EXTERNAL FINISHES LEGEND

Key	Description
1	Selected Reconstituted Stone
2	Glazing with Aluminium Mullions (PPC - RAL 7006)
3	Glazing with Aluminium Mullions and Louvre System (PPC - RAL 7006)
4	Glazing with Aluminium Mullions, Louvre System and Brise Soleil (PPC - RAL 7006)
5	Glazed Railing to Balconies
6	Aluminium Perforated Panels to Carpark (RAL 8001)
7	Pressed Metal Parapet Capping
8	Aluminium Louvre Panels (RAL 7006)
9	Aluminium Panels (RAL 7006)
10	Roof Mounted Photovoltaic (PV) Panels
11	Planted Sedum Roof

REVISION SCHEDULE

NO.	DATE	DESCRIPTION
P01	2019.02.07	Issued for Planning

Mixed Use Development
Trinity Wharf Wexford

CLIENT
Wexford County Council
County Hall, Carrickslaw, Wexford.
Y55 WY93
Tel: 053 919 6000
Web: www.wexfordcoco.ie



STW
Scott Tallon Walker
ARCHITECTS
19 Merrion Square, Dublin 2, Ireland
Tel: +353 (0)1 669 3000
Email: mail@stwarchitects.com
Web: www.stwarchitects.com

DRAWING
RESTAURANT_ELEVATIONS & SECTIONS

SCALE @A1 1 : 200	ISSUED: 2019.02.07
DRAWN BY: TH	CHECKED BY: PJ
PROJECT NO. 15058	PROJECT ARCHITECT: Philip Jackson
DRAWING NO. TWW-STW-00-ZZ-DR-A-300-03-1001	REVISION P01