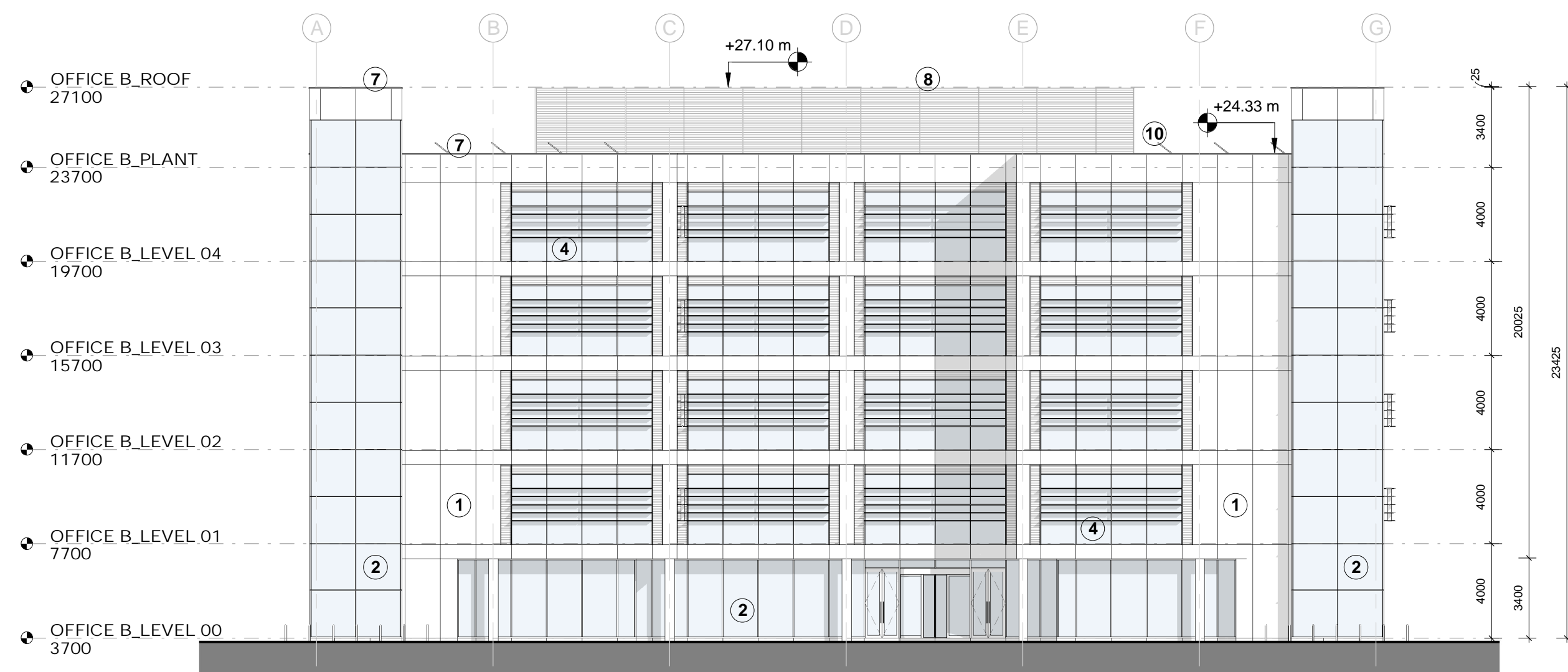
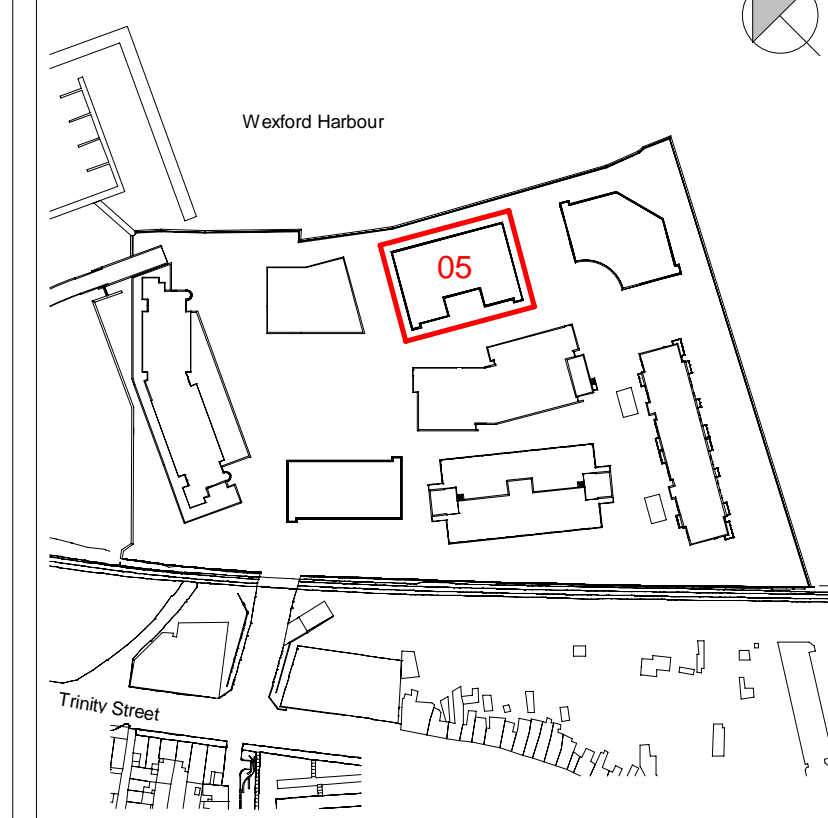
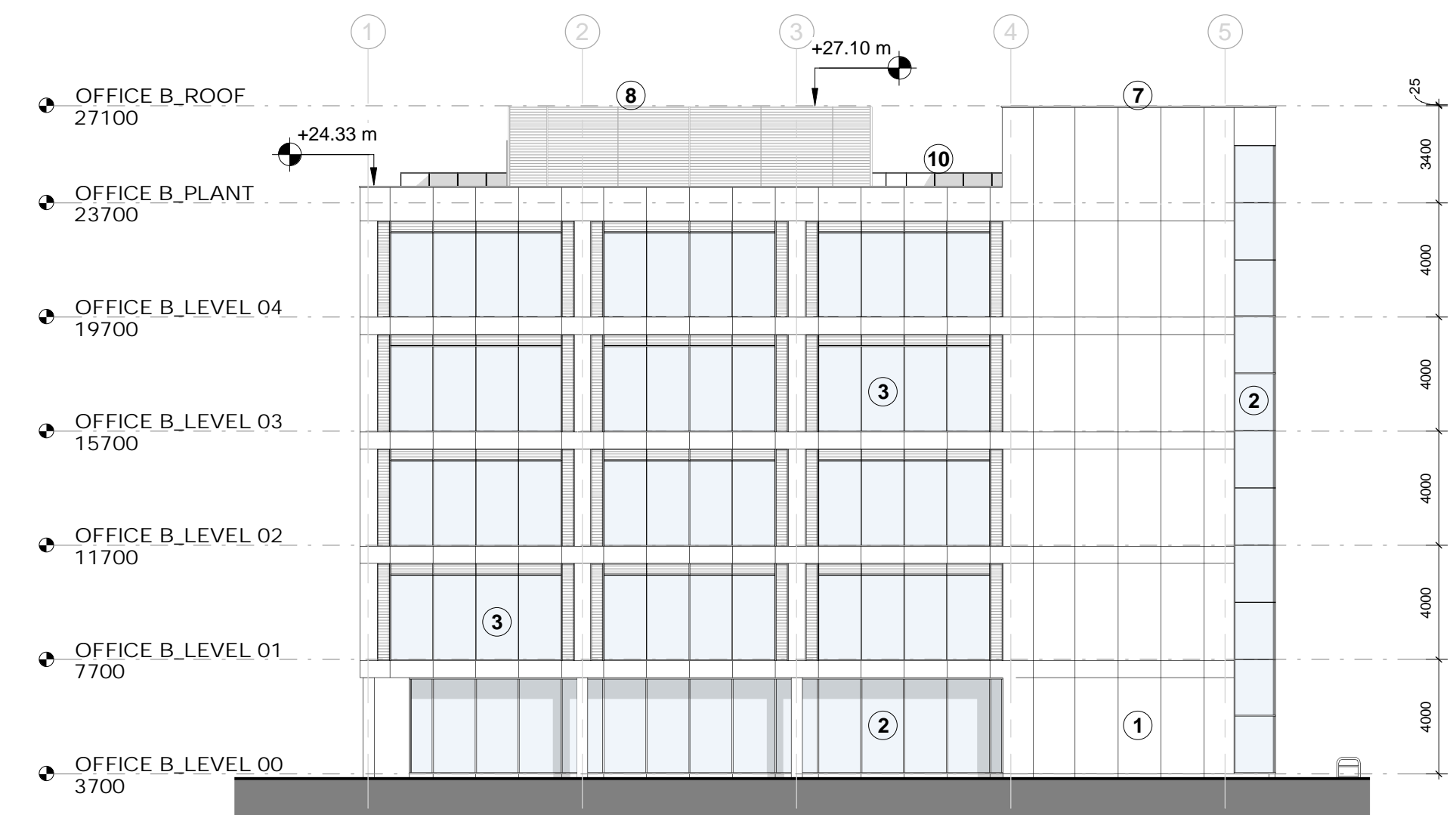


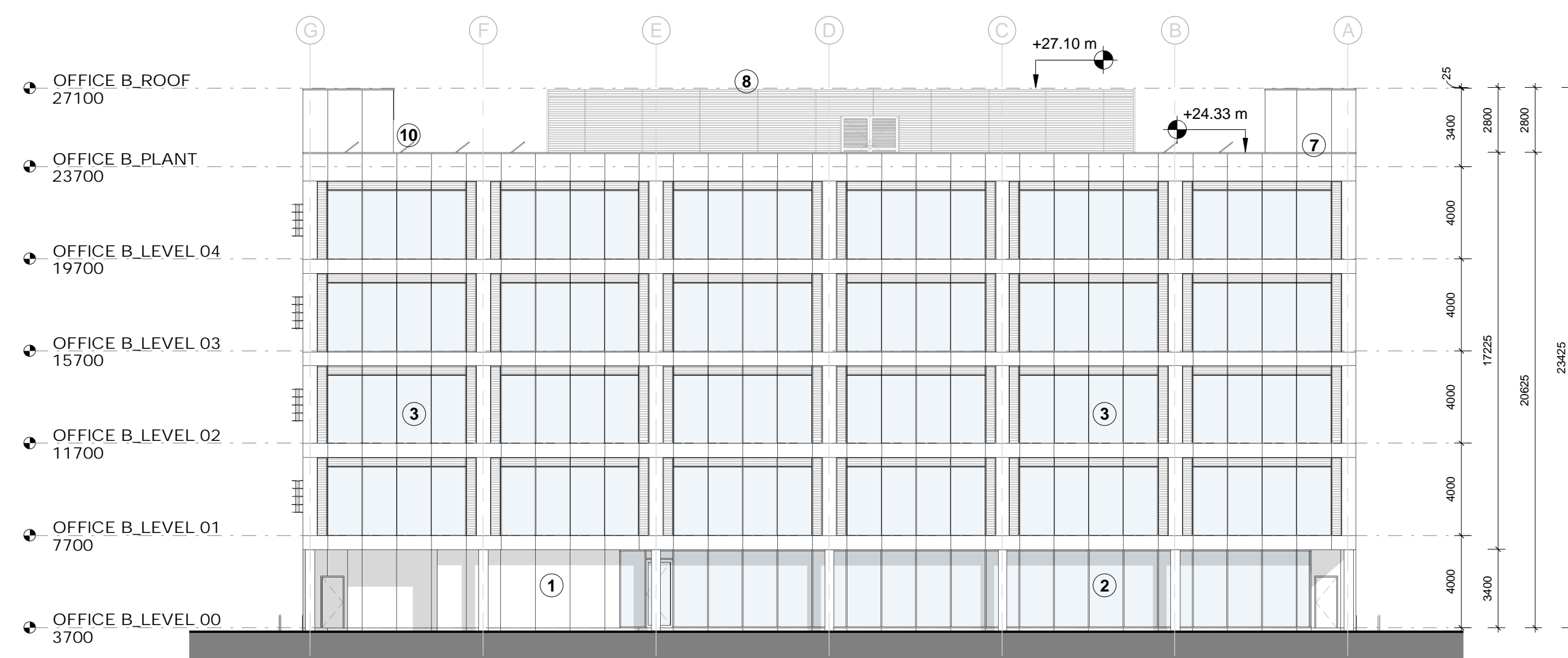
KEY PLAN



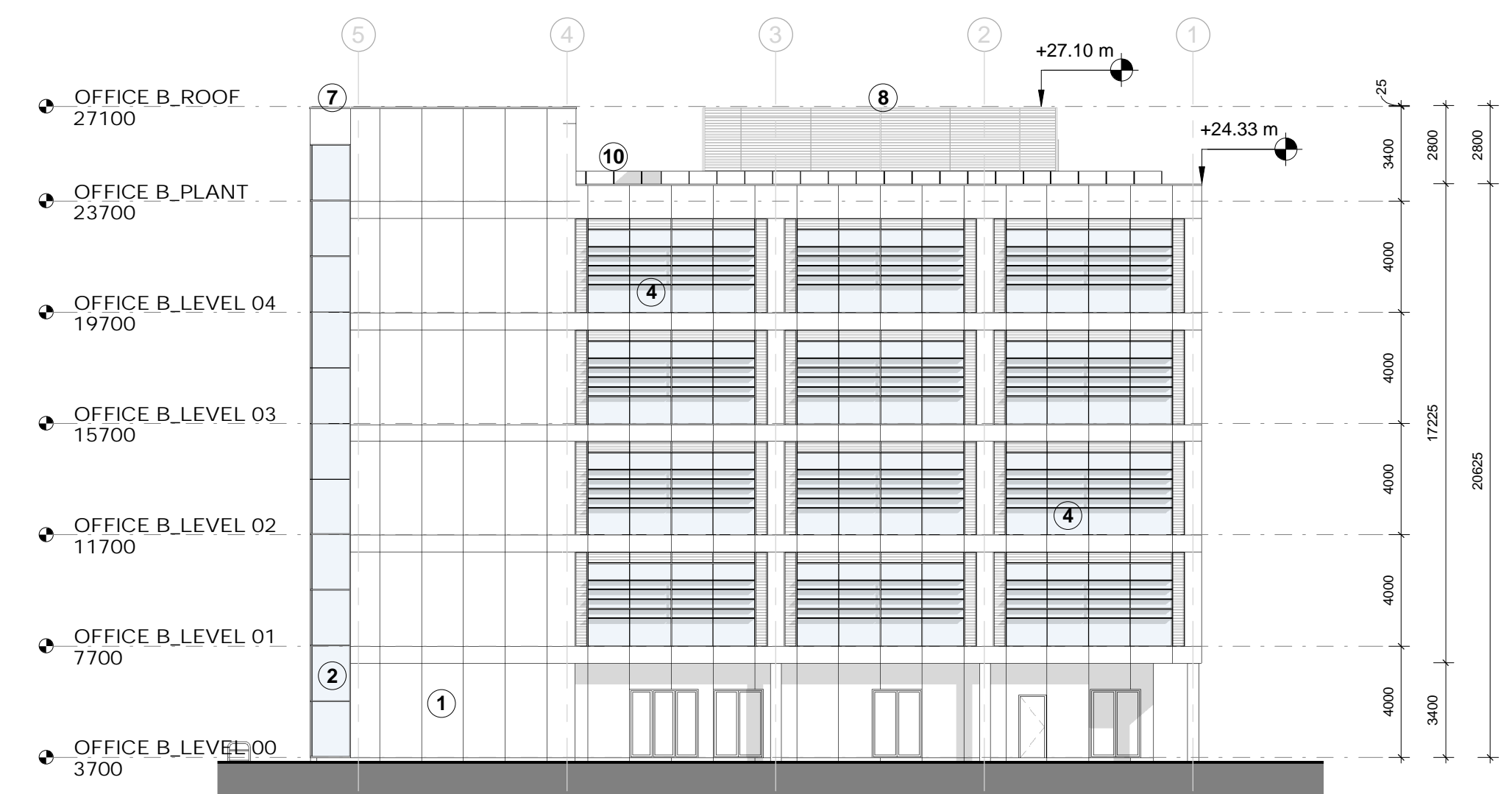
1-OFFICE B. SOUTH WEST ELEVATION
1:200



2-OFFICE B. NORTH WEST ELEVATION
1:200



3-OFFICE B. NORTH EAST ELEVATION
1:200



4-OFFICE B. SOUTH EAST ELEVATION
1:200

EXTERNAL FINISHES LEGEND

Key	Description
1	Selected Reconstituted Stone
2	Glazing with Aluminium Mullions (PPC - RAL 7006)
3	Glazing with Aluminium Mullions and Louvre System (PPC - RAL 7006)
4	Glazing with Aluminium Mullions, Louvre System and Brise Soleil (PPC - RAL 7006)
5	Glazed Railing to Balconies
6	Aluminium Perforated Panels to Carpark (RAL 8001)
7	Pressed Metal Parapet Capping
8	Aluminium Louvre Panels (RAL 7006)
9	Aluminium Panels (RAL 7006)
10	Roof Mounted Photovoltaic (PV) Panels
11	Planted Sedum Roof

REVISION SCHEDULE

NO.	DATE	DESCRIPTION
P01	2019.02.07	Issued for Planning

Mixed Use Development Trinity Wharf Wexford

CLIENT

Wexford County Council

County Hall, Carrickslaw, Wexford,
Y55 WY93

Tel: 053 919 6000

Web: www.wexfordcoco.ie



19 Merrion Square, Dublin 2, Ireland

Tel: +353 (0)1 669 3000

Email: mail@stwarchitects.com

Web: www.stwarchitects.com

DRAWING

OFFICE B_ELEVATIONS & SECTIONS

SCALE @A1

1:200

DRAWN BY:

TH

PROJECT NO.

15058

DRAWING NO.

TWW-STW-00-ZZ-DR-A-300-05-1001

ISSUED:

2019.02.07

CHECKED BY:

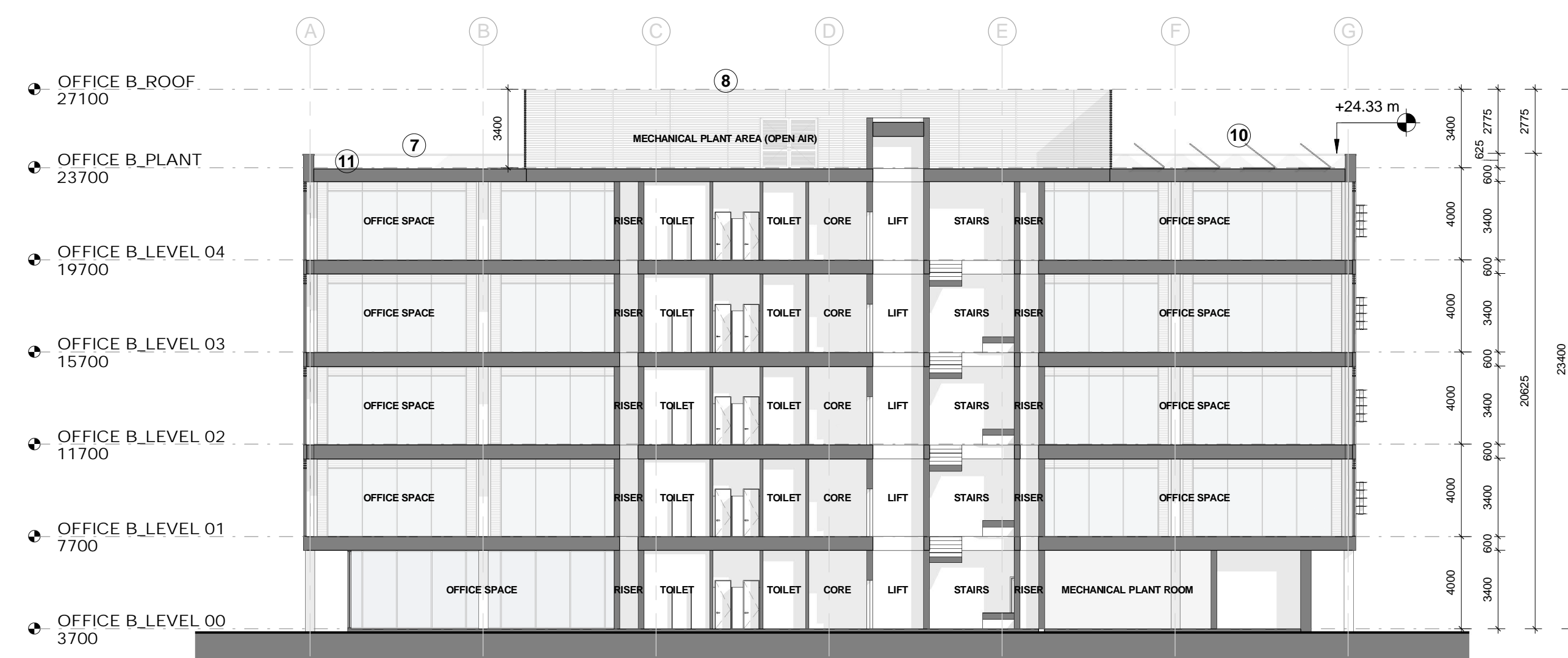
PJ

PROJECT ARCHITECT:

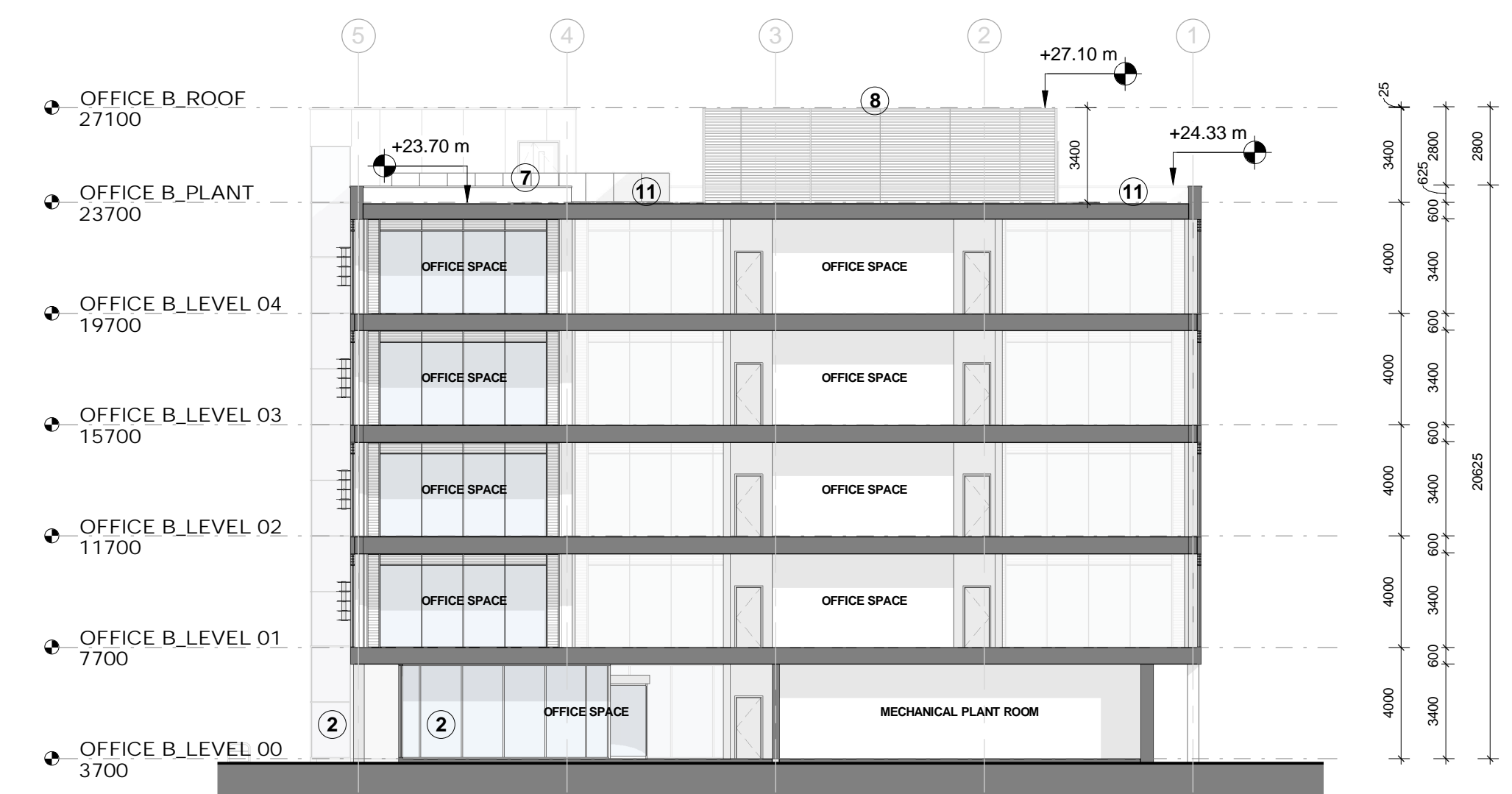
Philip Jackson

REVISION

P01



5-OFFICE B. SECTION 1
1:200



6-OFFICE B. SECTION 2
1:200