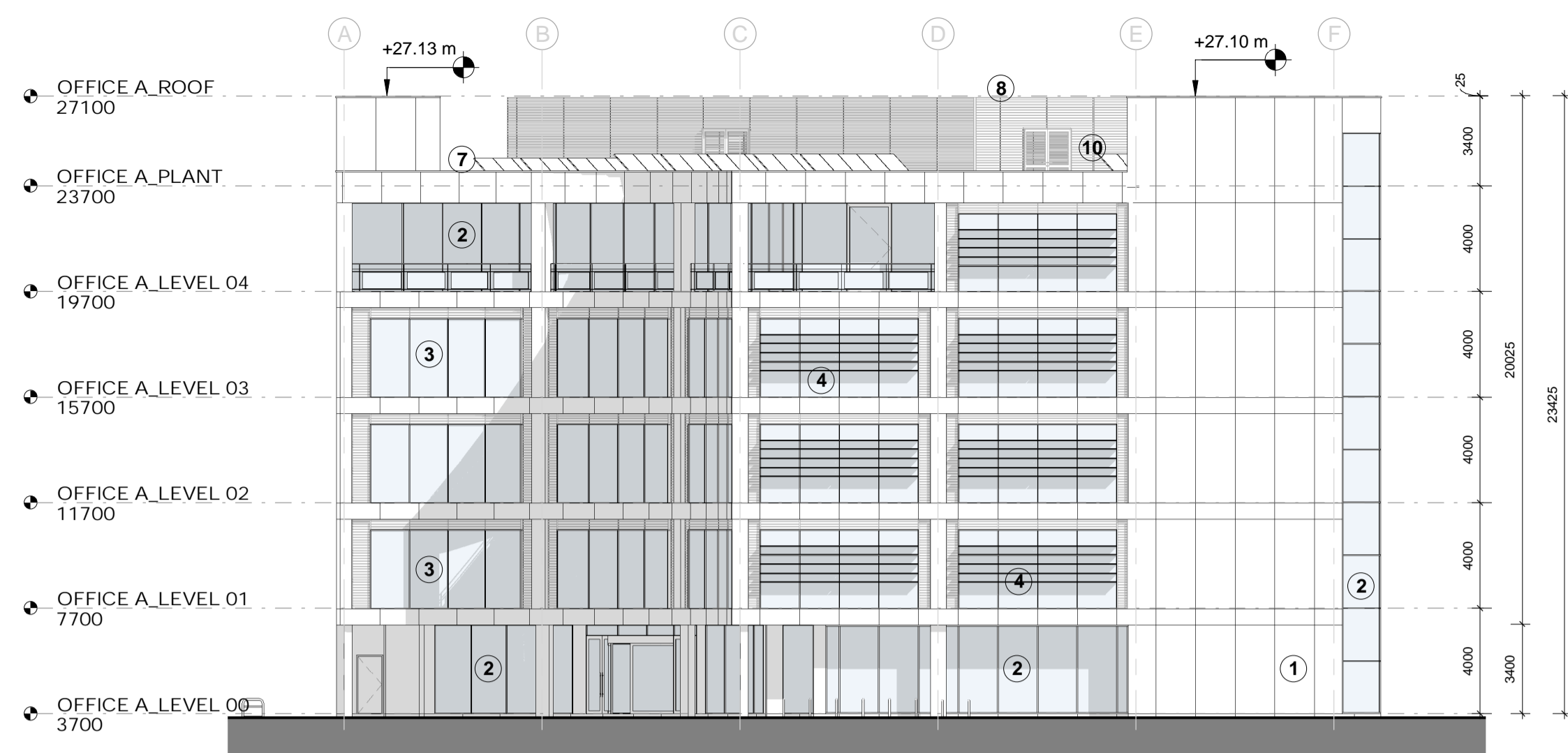
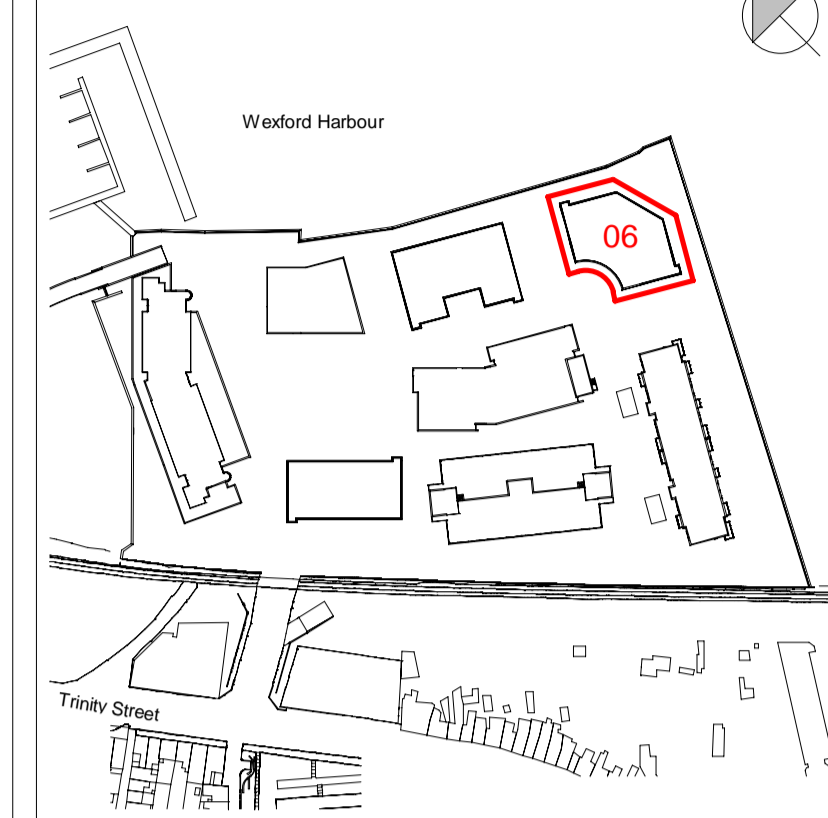


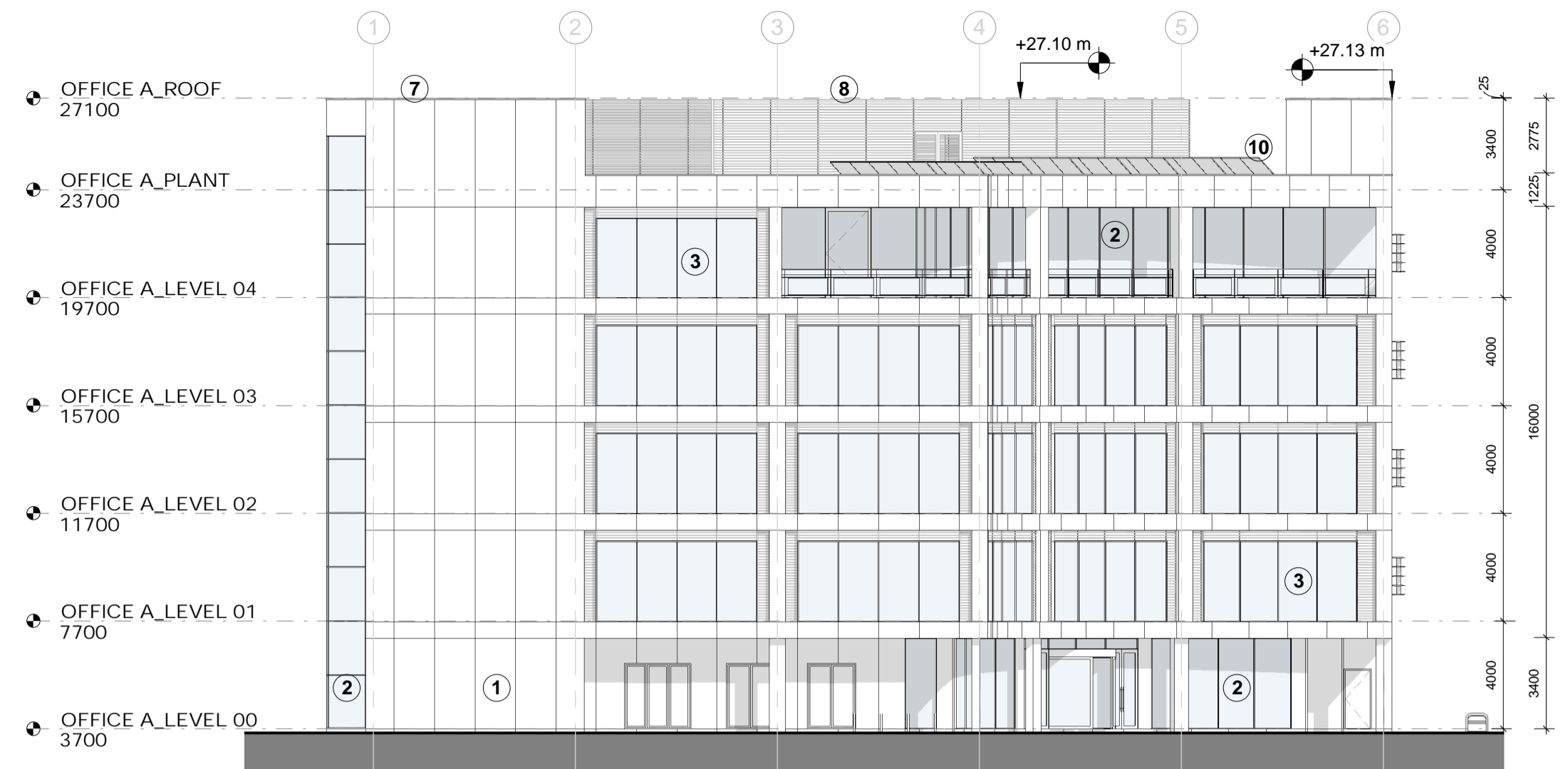
Copyright. All Rights Reserved.  
This work is copyright and cannot be produced or copied in any form or by any means (graphic, electronic or mechanical including photocopying) without the written permission of the originator. Any reuse, express or implied, to use this document for any purpose whatsoever is restricted to the terms of the agreement or implied agreement between the originator and the instructing party.

Levels and contours are relative to an Ordnance Survey Datum  
Figured dimensions in millimetres.

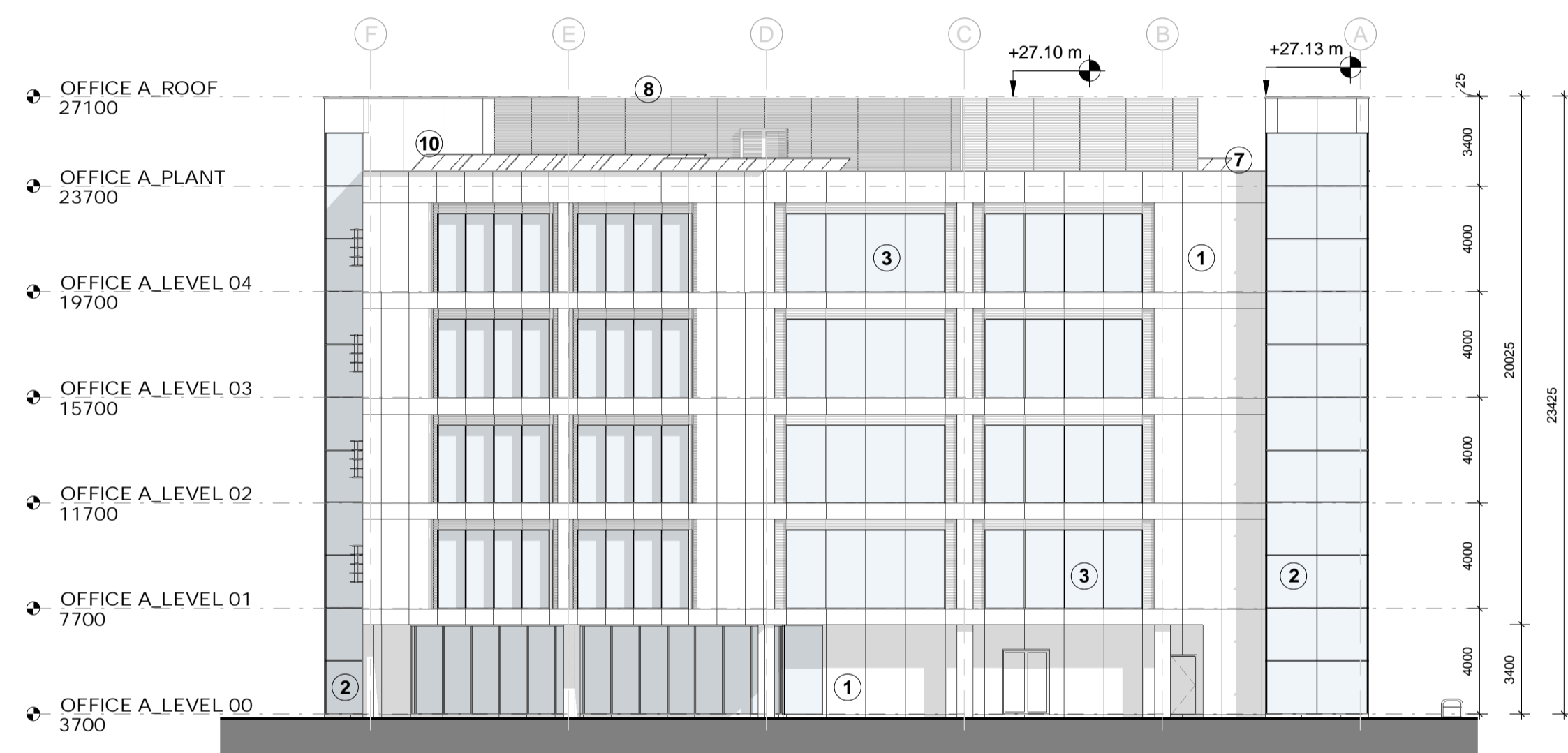
### KEY PLAN



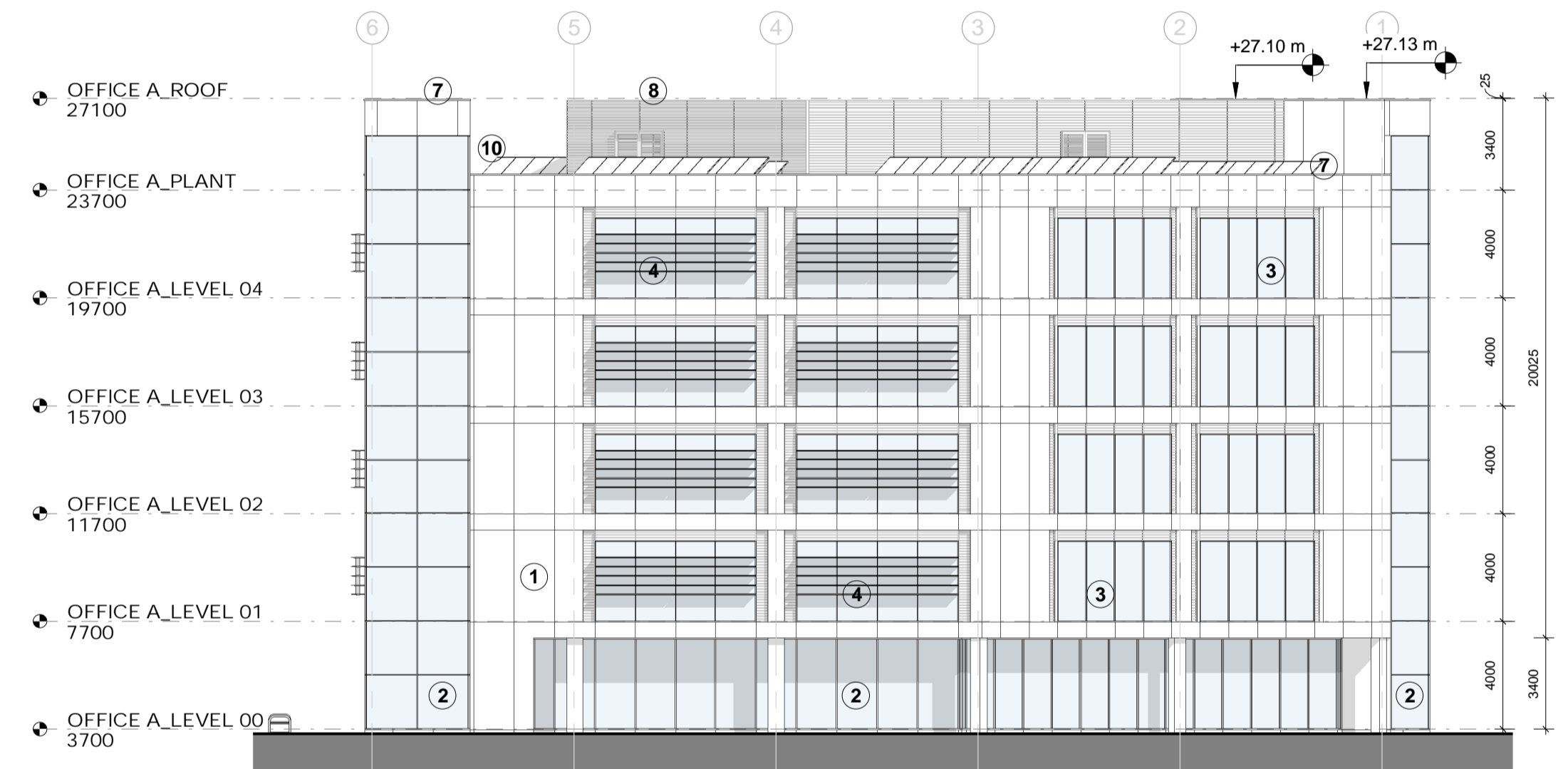
1-OFFICE A SOUTH WEST ELEVATION  
1: 200



2-OFFICE A NORTH WEST ELEVATION  
1: 200



3-OFFICE A NORTH EAST ELEVATION  
1: 200



4-OFFICE A SOUTH EAST ELEVATION  
1: 200

### EXTERNAL FINISHES LEGEND

Key	Description
1	Selected Reconstituted Stone
2	Glazing with Aluminium Mullions (PPC - RAL 7006)
3	Glazing with Aluminium Mullions and Louvre System (PPC - RAL 7006)
4	Glazing with Aluminium Mullions, Louvre System and Brise Soleil (PPC - RAL 7006)
5	Glazed Railing to Balconies
6	Aluminium Perforated Panels to Carpark (RAL 8001)
7	Pressed Metal Parapet Capping
8	Aluminium Louvre Panels (RAL 7006)
9	Aluminium Panels (RAL 7006)
10	Roof Mounted Photovoltaic (PV) Panels
11	Planted Sedum Roof

### REVISION SCHEDULE

NO.	DATE	DESCRIPTION
P01	2019.02.07	Issued for Planning

### Mixed Use Development Trinity Wharf Wexford

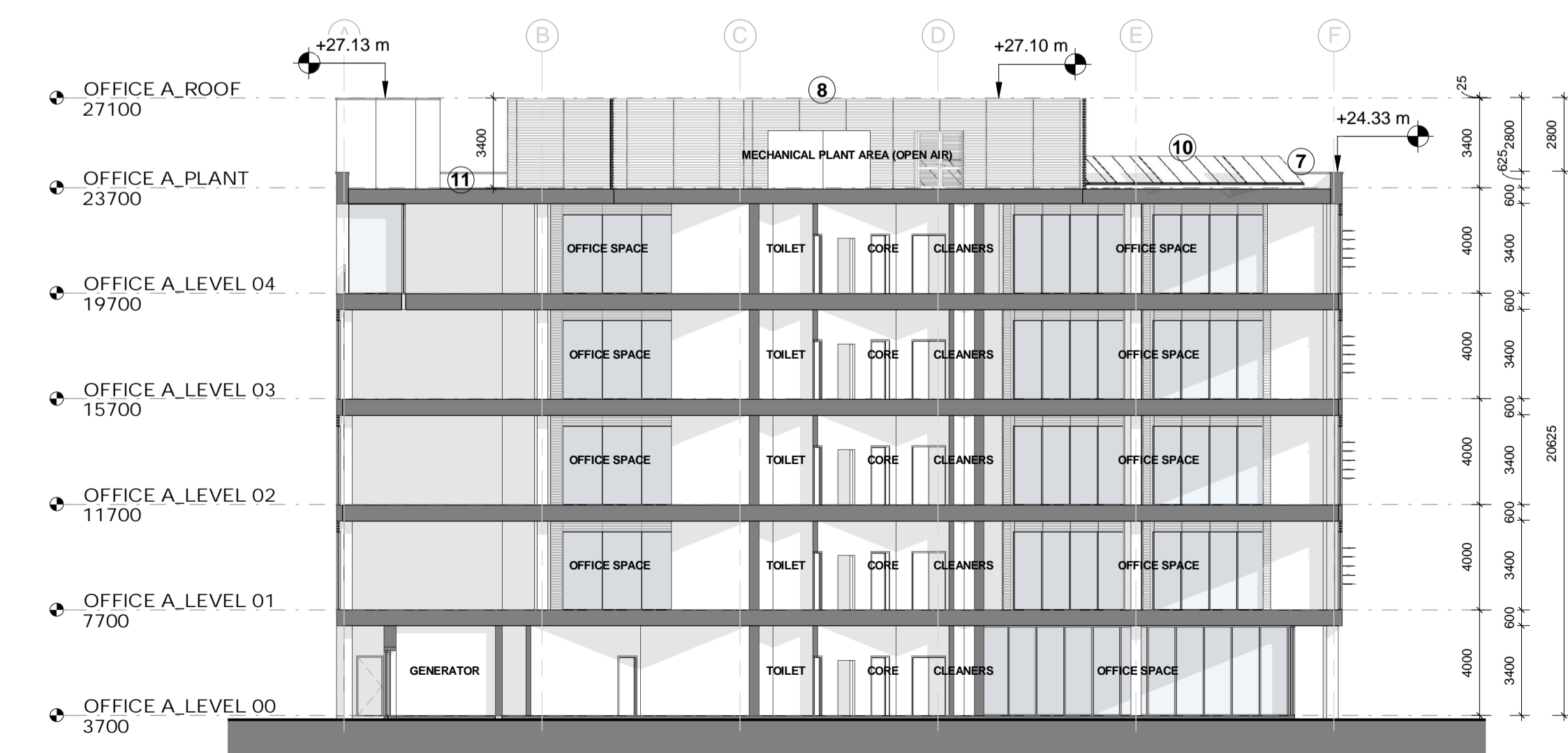
CLIENT  
**Wexford County Council**  
County Hall, Carrickslaw, Wexford.  
Y55 WY93  
Tel: 053 919 6000  
Web: www.wexfordcoco.ie



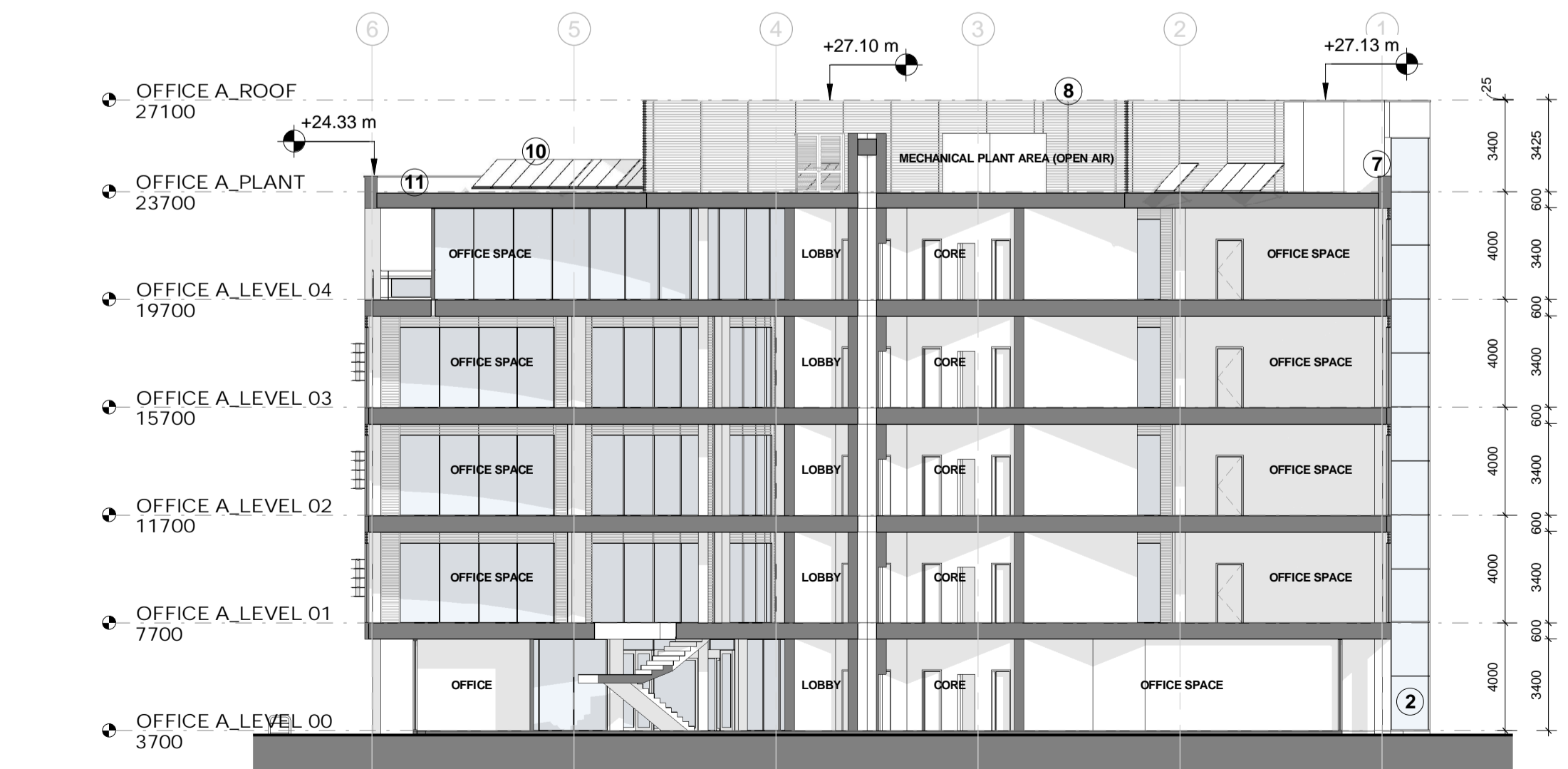
**STW**  
Scott Tallon Walker  
ARCHITECTS  
19 Merrion Square, Dublin 2, Ireland  
Tel: +353 (0)1 669 3000  
Email: mail@stwarchitects.com  
Web: www.stwarchitects.com

### DRAWING OFFICE A\_ELEVATIONS & SECTIONS

SCALE @A1 1: 200	ISSUED: 2019.02.07
DRAWN BY: TH	CHECKED BY: PJ
PROJECT NO. 15058	PROJECT ARCHITECT: Philip Jackson
DRAWING NO. <b>TWW-STW-00-ZZ-DR-A-300-06-1001</b>	REVISION <b>P01</b>
PROJECT STAGE: <b>Stage 4: PLANNING APPLICATION</b>	



5-OFFICE A SECTION 1  
1: 200



6-OFFICE A SECTION 2  
1: 200