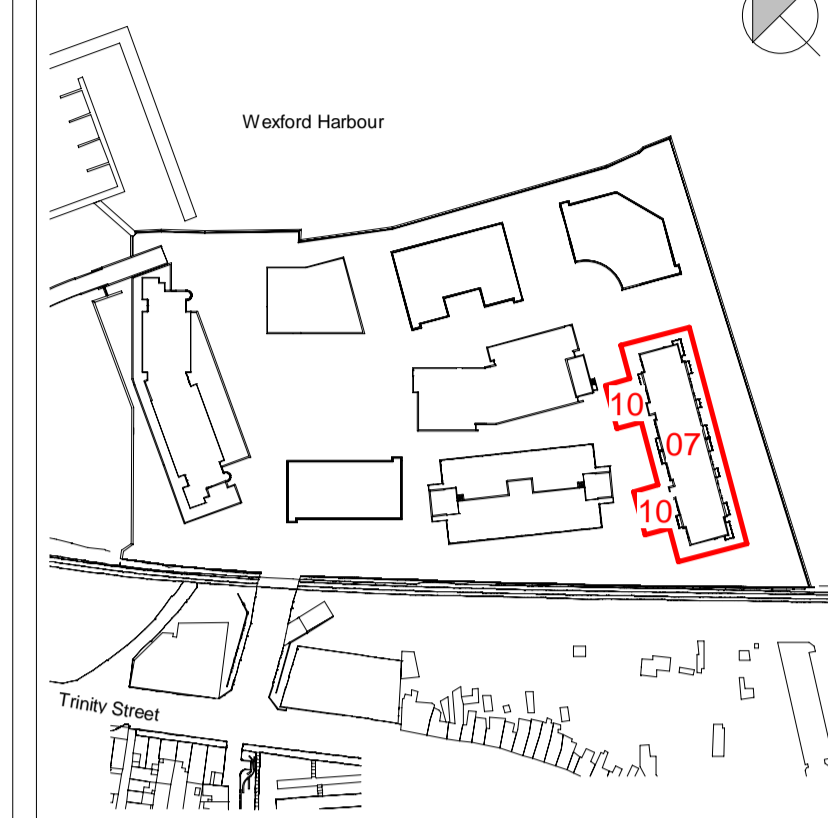


Copyright. All Rights Reserved.
This work is copyright and cannot be produced or copied in any form or by any means (graphic, electronic or mechanical including photocopying) without the written permission of the originator. Any reuse, express or implied, to use this document for any purpose whatsoever is restricted to the terms of the agreement or implied agreement between the originator and the instructing party.

Levels and contours are relative to an Ordnance Survey Datum
Figured dimensions in millimetres.

KEY PLAN



EXTERNAL FINISHES LEGEND

Key	Description
1	Selected Reconstituted Stone
2	Glazing with Aluminium Mullions (PPC - RAL 7006)
3	Glazing with Aluminium Mullions and Louvre System (PPC - RAL 7006)
4	Glazing with Aluminium Mullions, Louvre System and Brise Soleil (PPC - RAL 7006)
5	Glazed Railing to Balconies
6	Aluminium Perforated Panels to Carpark (RAL 8001)
7	Pressed Metal Parapet Capping
8	Aluminium Louvre Panels (RAL 7006)
9	Aluminium Panels (RAL 7006)
10	Roof Mounted Photovoltaic (PV) Panels
11	Planted Sedum Roof

REVISION SCHEDULE

NO.	DATE	DESCRIPTION
P01	2019.02.07	Issued for Planning

Mixed Use Development Trinity Wharf Wexford

CLIENT
Wexford County Council
County Hall, Carrickslaw, Wexford.
Y55 WY93
Tel: 053 919 6000
Web: www.wexfordcoco.ie



19 Merrion Square, Dublin 2, Ireland
Tel: +353 (0)1 669 3000
Email: mail@stwalter.com
Web: www.stwalter.com

DRAWING RESIDENTIAL ELEVATIONS & SECTIONS

SCALE @A1 1:200	ISSUED: 2019.02.07
DRAWN BY: TH	CHECKED BY: PJ
PROJECT NO. 15058	PROJECT ARCHITECT: Philip Jackson
DRAWING NO. TWW-STW-00-ZZ-DR-A-300-07-1001	REVISION P01

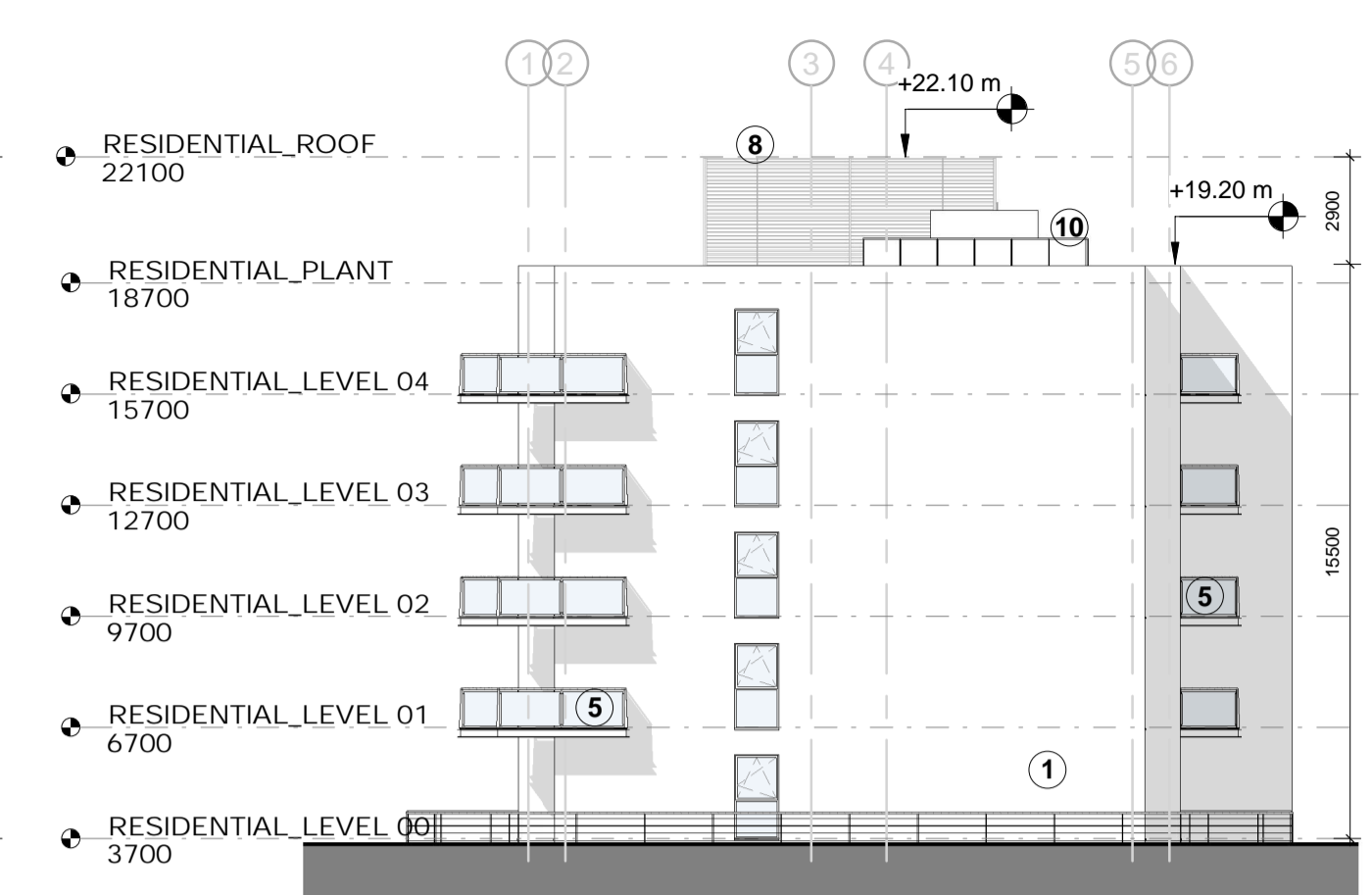
PROJECT STAGE: **Stage 4: PLANNING APPLICATION**

11/02/19 12:51:03 PM

TWW-STW-00-ZZ-M3-A-0000_SHEETS



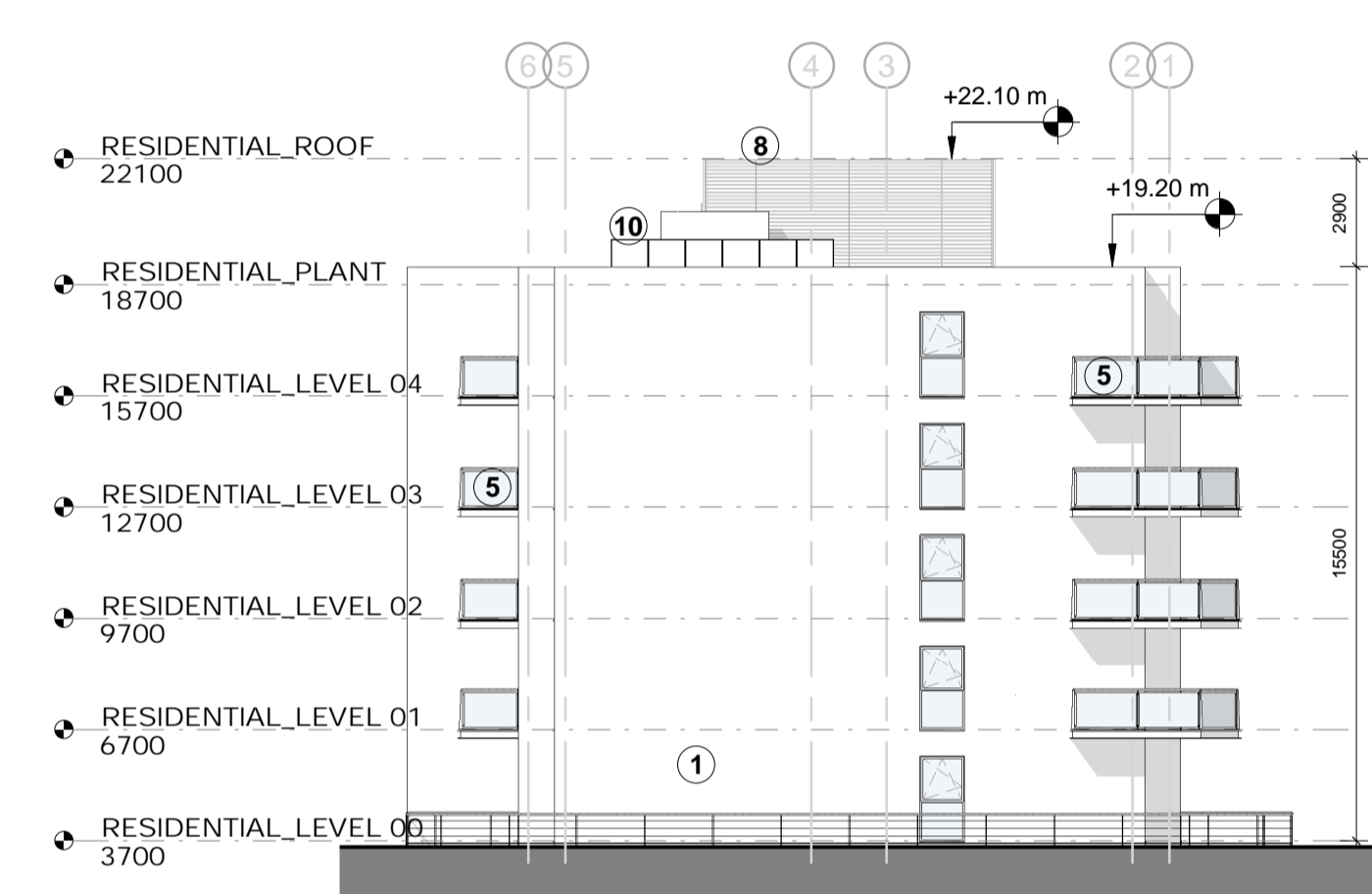
1-RESIDENTIAL NORTH WEST ELEVATION
1:200



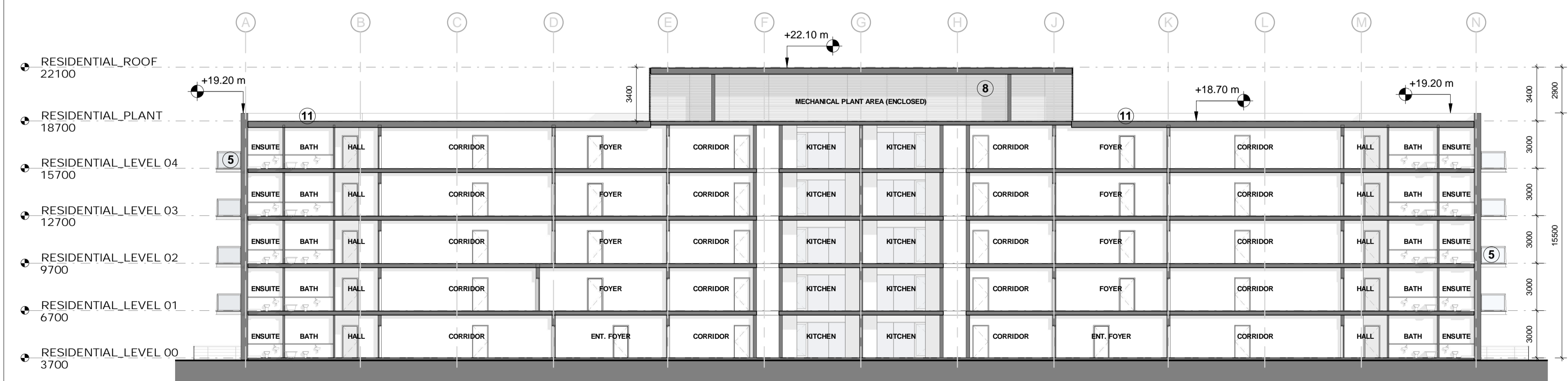
2-RESIDENTIAL NORTH EAST ELEVATION
1:200



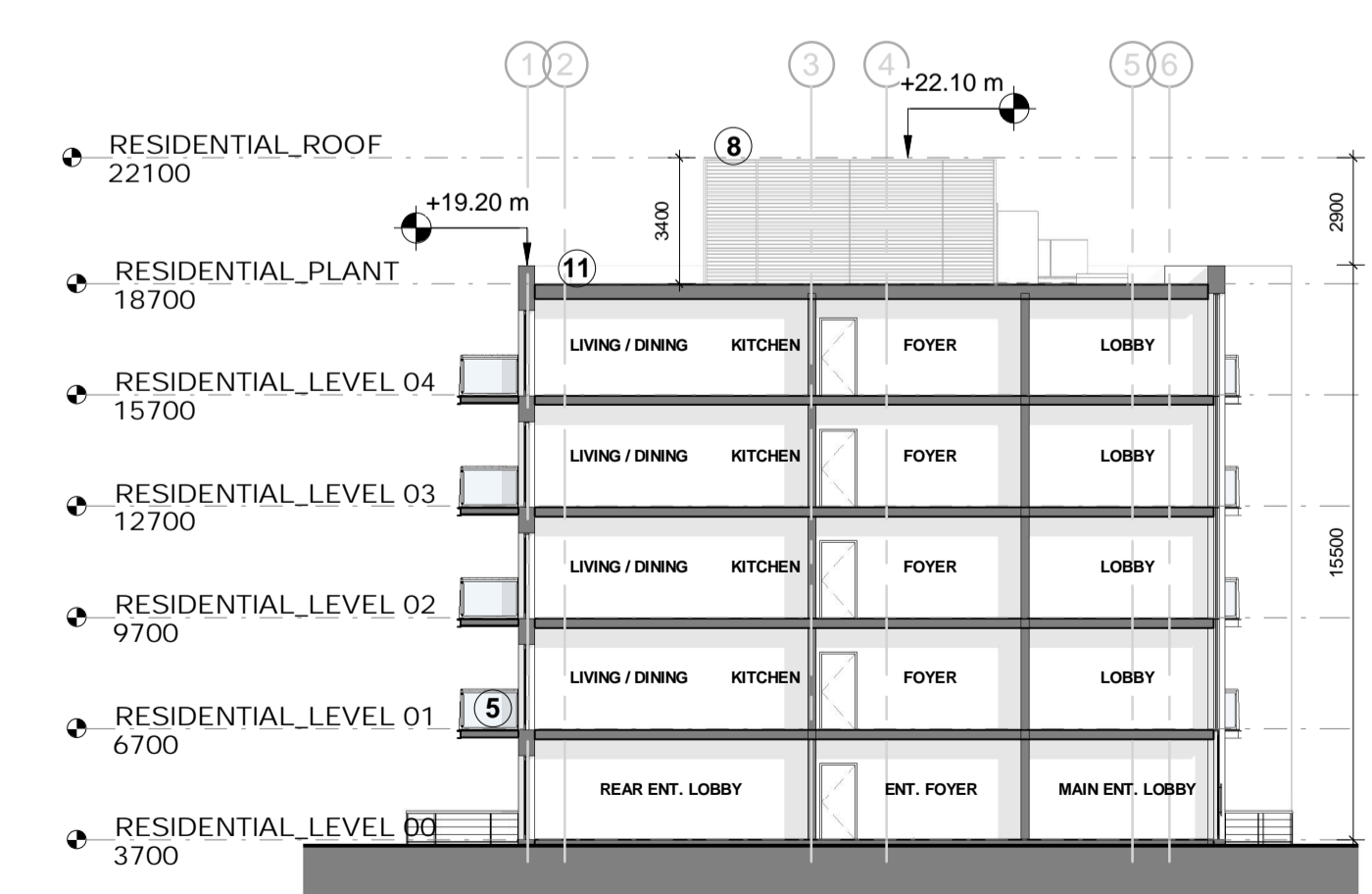
3-RESIDENTIAL SOUTH EAST ELEVATION
1:200



4-RESIDENTIAL SOUTH WEST ELEVATION
1:200



5-RESIDENTIAL SECTION 1
1:200



6-RESIDENTIAL SECTION 2
1:200