

EXTERNAL FINISHES LEGEND	
Key	Description
1	Selected Reconstituted Stone
2	Glazing with Aluminium Mullions (PPC - RAL 7006)
3	Glazing with Aluminium Mullions and Louvre System (PPC - RAL 7006)
4	Glazing with Aluminium Mullions, Louvre System and Brise Soleil (PPC - RAL 7006)
5	Glazed Railing to Balconies
6	Aluminium Perforated Panels to Carpark (RAL 8001)
7	Pressed Metal Parapet Capping
8	Aluminium Louvre Panels (RAL 7006)
9	Aluminium Panels (RAL 7006)
10	Roof Mounted Photovoltaic (PV) Panels
11	Planted Sedum Roof

REVISION SCHEDULE		
NO.	DATE	DESCRIPTION
P01	2019.02.07	Issued for Planning

Mixed Use Development
Trinity Wharf Wexford

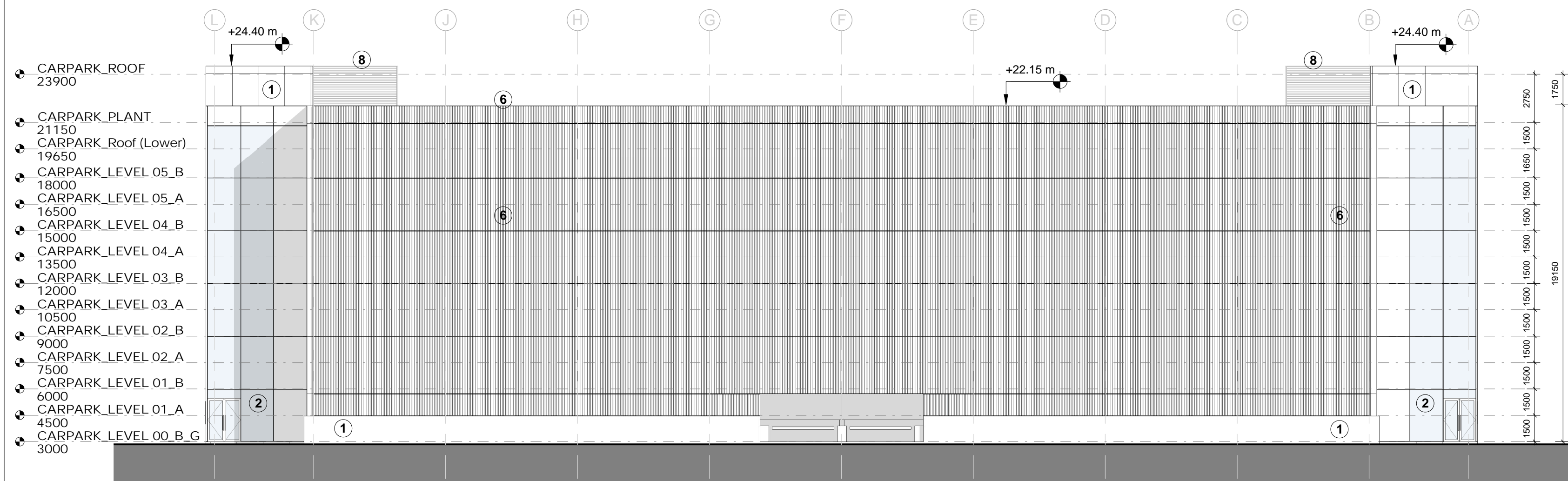
CLIENT
Wexford County Council
County Hall, Carrickslaw, Wexford.
Y55 W933
Tel: 053 919 6000
Web: www.wexfordcoco.ie



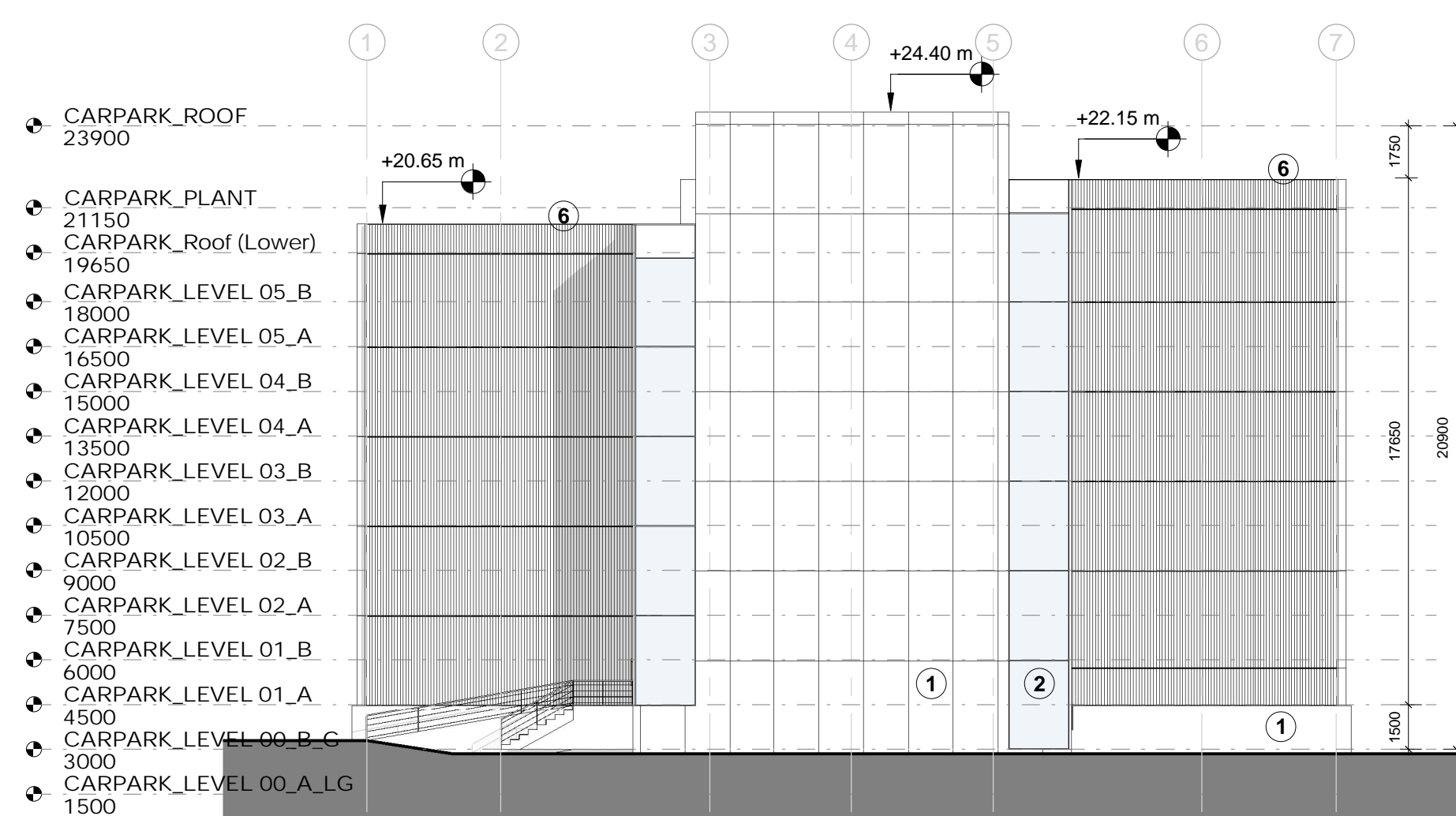
STW
Scott Tallon Walker
ARCHITECTS
19 Merrion Square, Dublin 2, Ireland
Tel: +353 (0)1 669 3000
Email: mail@stwarchitects.com
Web: www.stwarchitects.com

DRAWING
CARPARK_ELEVATIONS & SECTIONS

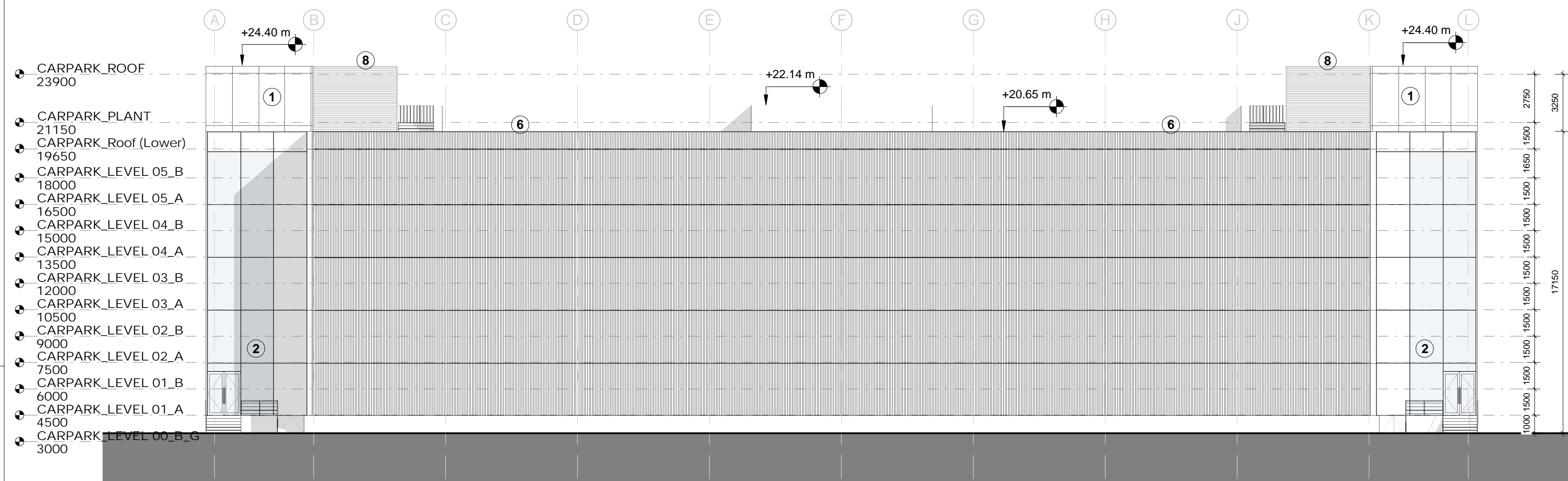
SCALE @A1 1:200	ISSUED: 2019.02.07
DRAWN BY: TH	CHECKED BY: PJ
PROJECT NO. 15058	PROJECT ARCHITECT: Philip Jackson
DRAWING NO. TWW-STW-00-ZZ-DR-A-300-08-1001	REVISION P01



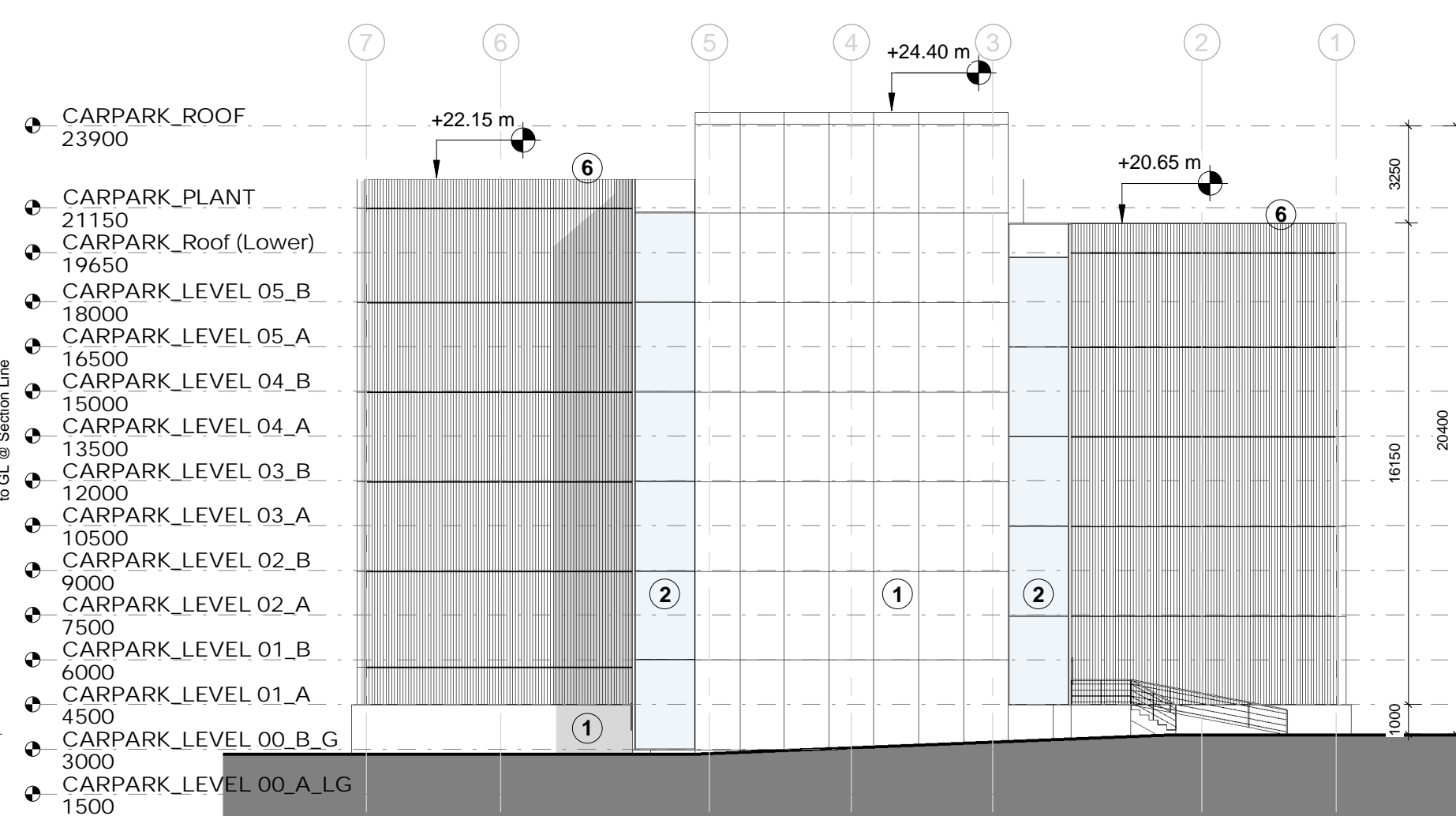
1-CARPARK SOUTH WEST ELEVATION
1:200



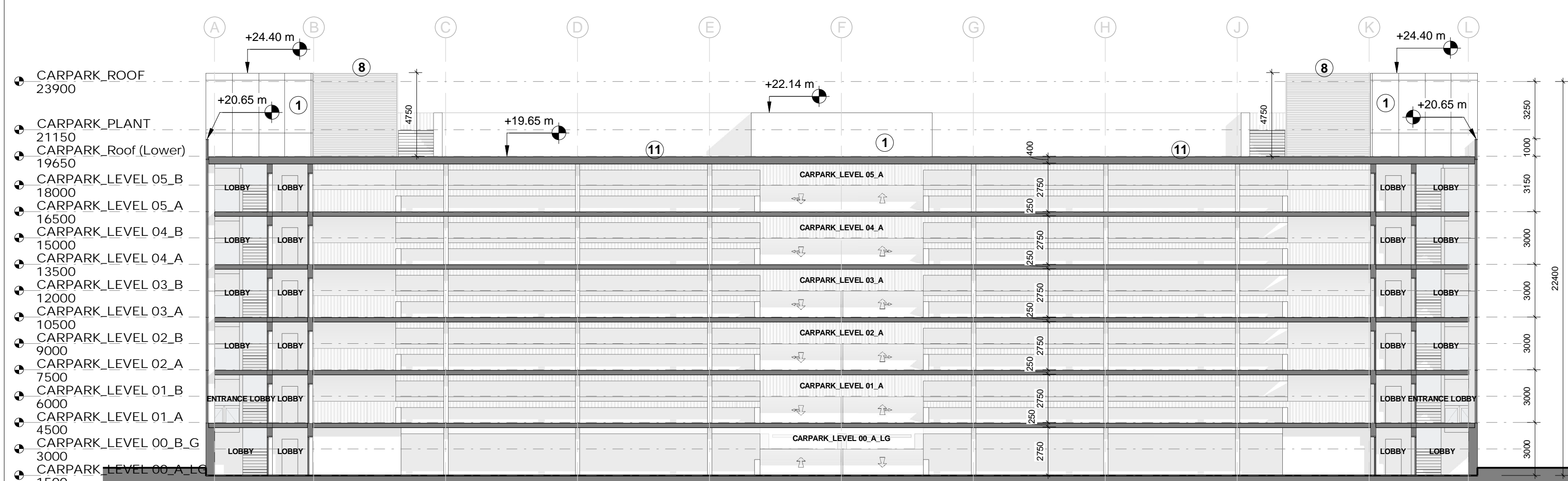
2-CARPARK NORTH WEST ELEVATION
1:200



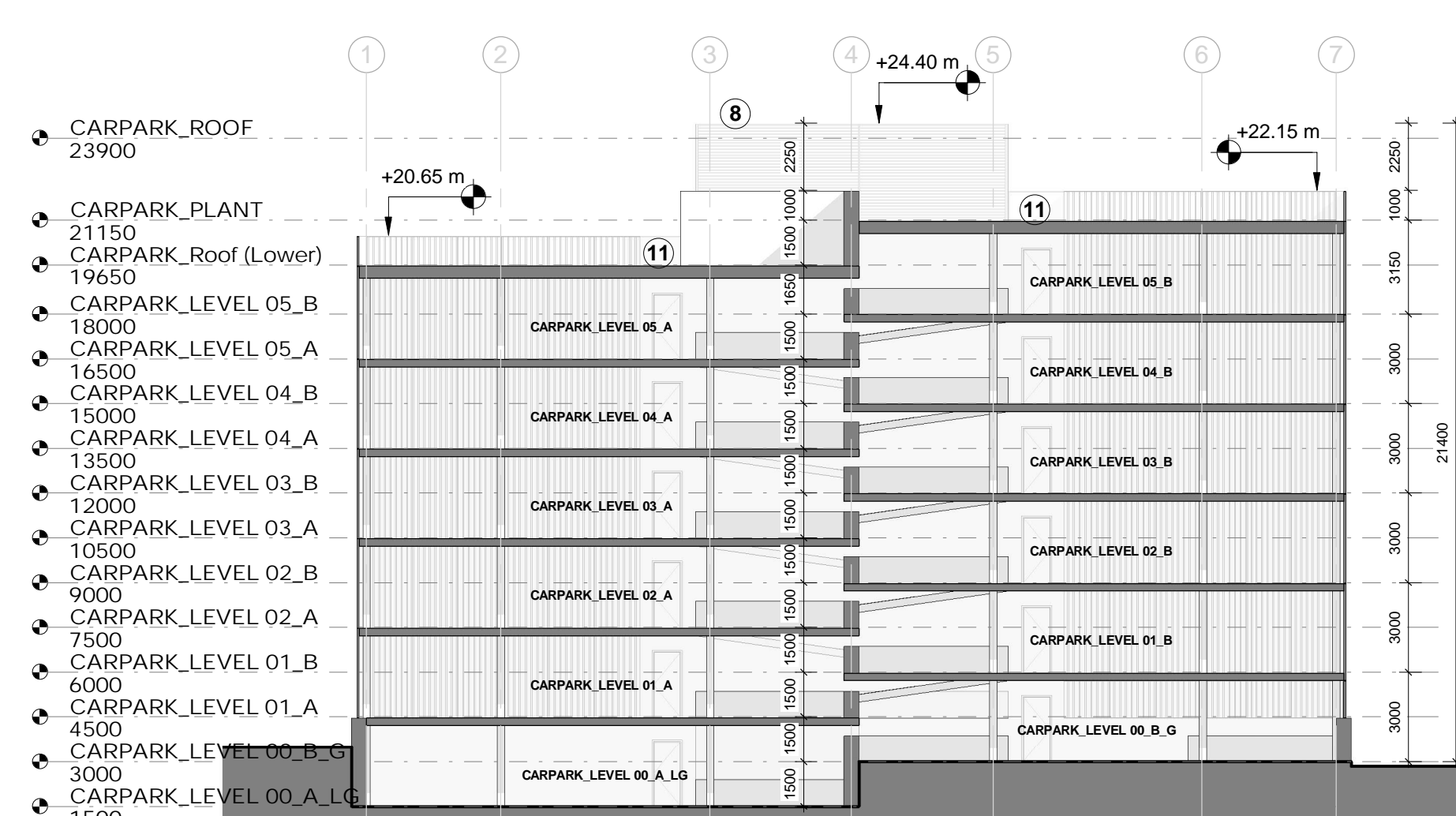
3-CARPARK NORTH EAST ELEVATION
1:200



4-CARPARK SOUTH EAST ELEVATION
1:200



5-CARPARK SECTION 1
1:200



6-CARPARK SECTION 2
1:200