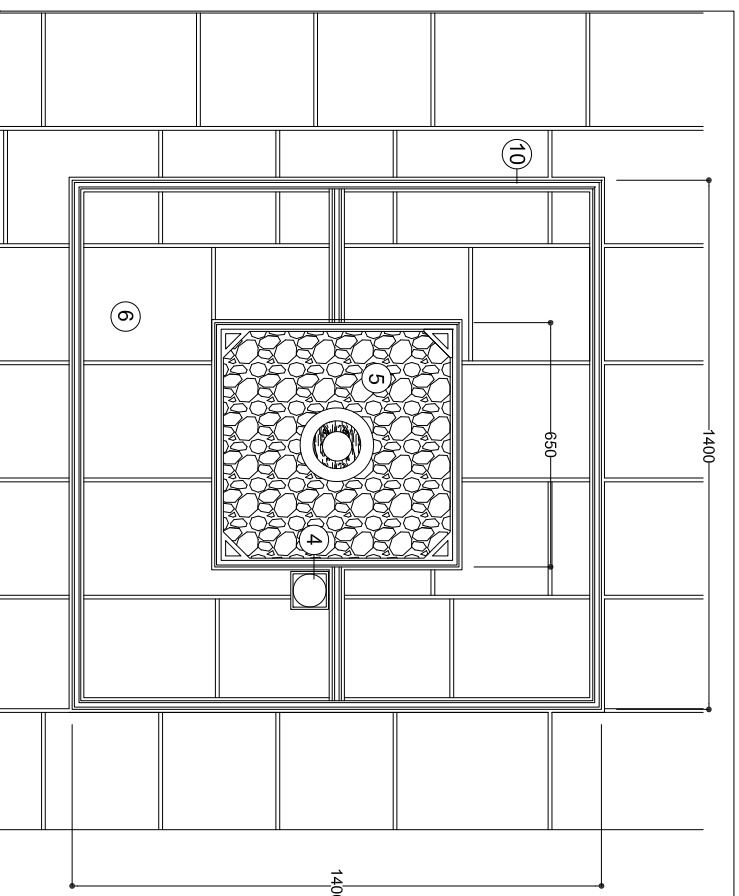
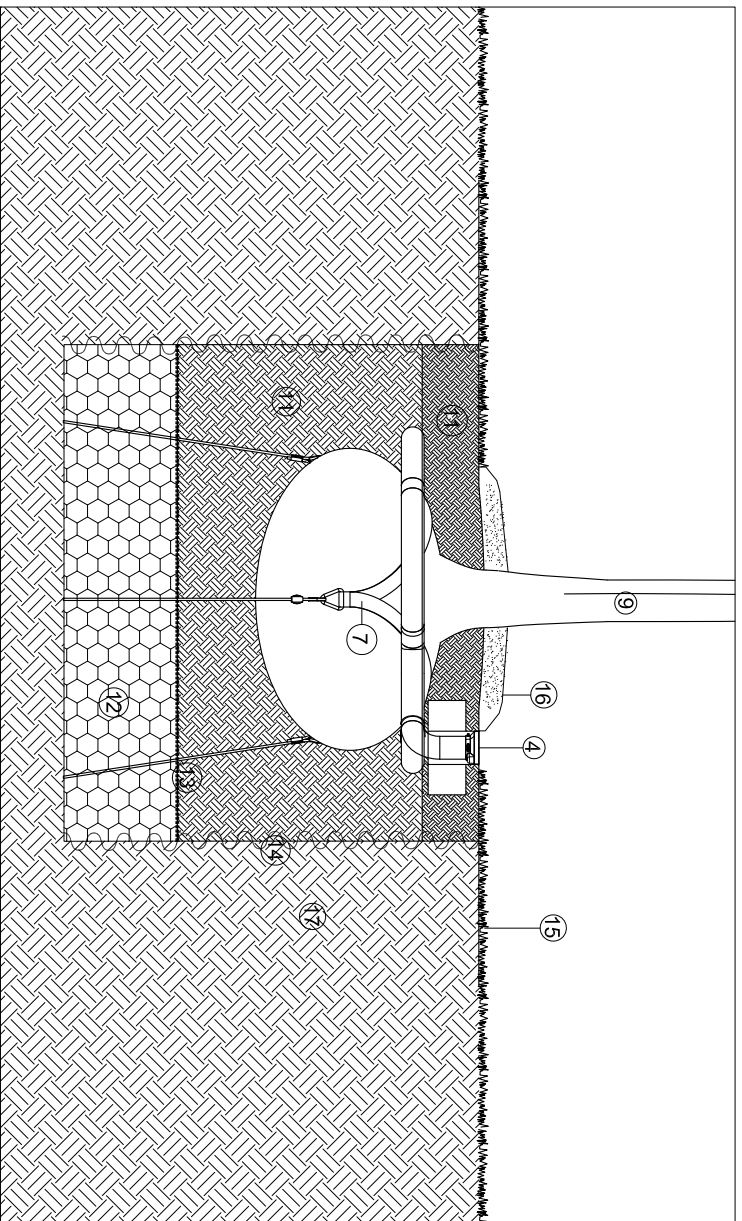


Section - Proposed Tree in Hard Surface
scale@a3 1:20



Plan - Proposed Tree in Hard Surface
scale@a3 1:20



Section - Proposed Tree in Soft Landscape
scale@a3 1:20

- Key**
1. Root Director .modular root barrier system
 2. Twinwall geonet
 3. RootCell structure
 4. aeration / irrigation system specially incorporated into the tree grill with lockable lid.
 5. 20MM deep porous bound stone surfacing laid on loose stone
 6. Proposed paving surface.
 7. Large anchor system with drive in heavy-duty composite anchors.
 8. Concrete foundation to engineers detail
 9. Proposed Mature Tree. Refer to planting plan
 10. Recessed tree grill
 11. Tree soil / Top soil
 12. 300mm Clean stone drainage layer
 13. Permeable membrane
 14. Re-direct root barrier
 15. Proposed Planting. For type refer to layout drawings
 16. Bark Mulch
 17. Existing soil

Revision	Description	Date	Initial	Revision	Description	Date	Initial
P00	Issued for Planning	11.12.18	DM				

Client	Date	Initial
Wexford County Council		
Project Title Trinity Wharf		
Drawing Title Typical Tree Pits		

the paul hogarth company

landscape architecture
 potters quay, 5 ravenhill road, belfast
 telephone: 028 9073 6690
 email: belfast@paulhogarth.com

urban design
 BT6 8DN
 fax: 028 9073 2705
 www.paulhogarth.com

drawn by DM	checked by AM	scale @ A3 1:20	drawing no. L-DE-901	revision P00
project no. 1125	date 10.12.18	status Planning		