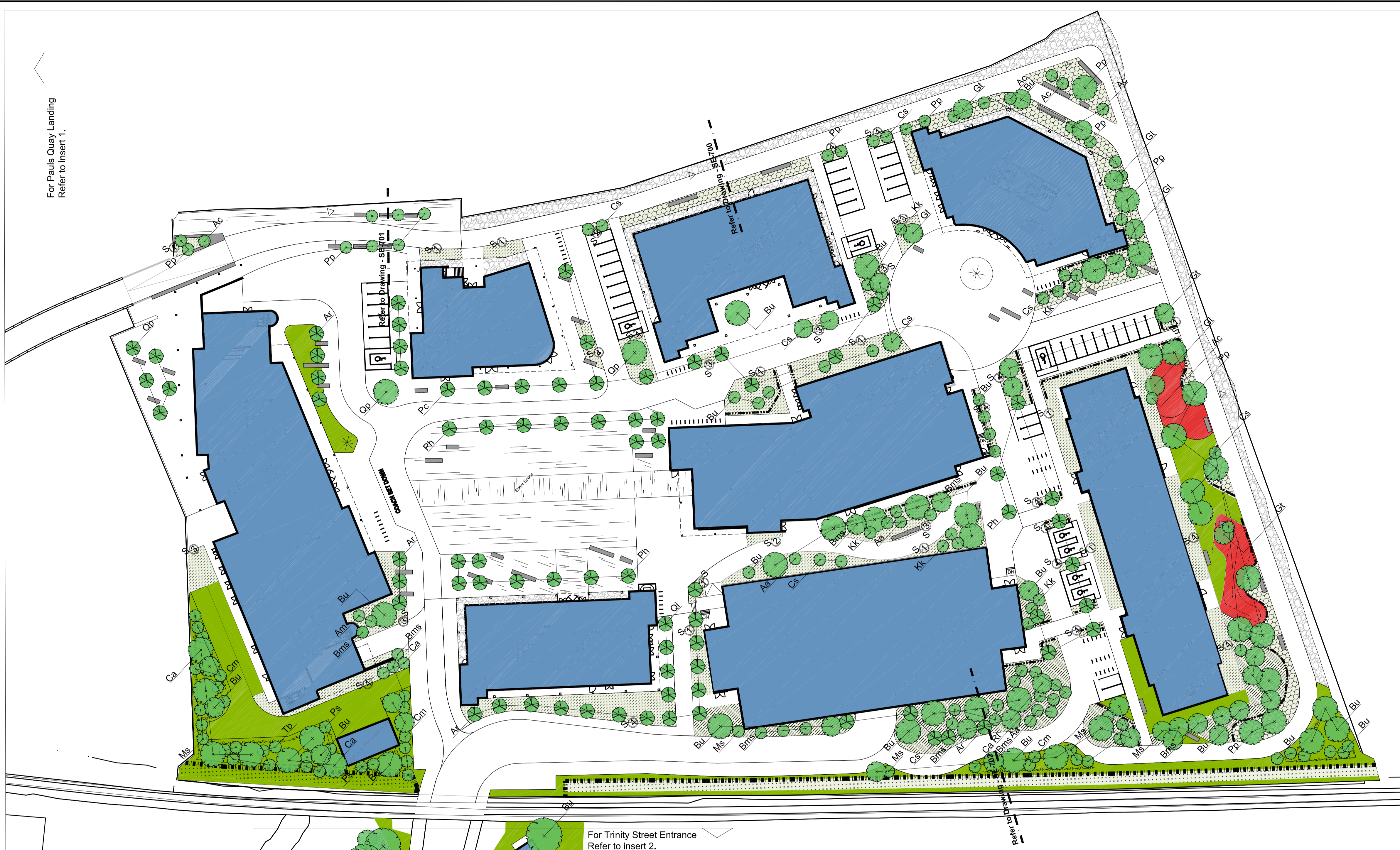
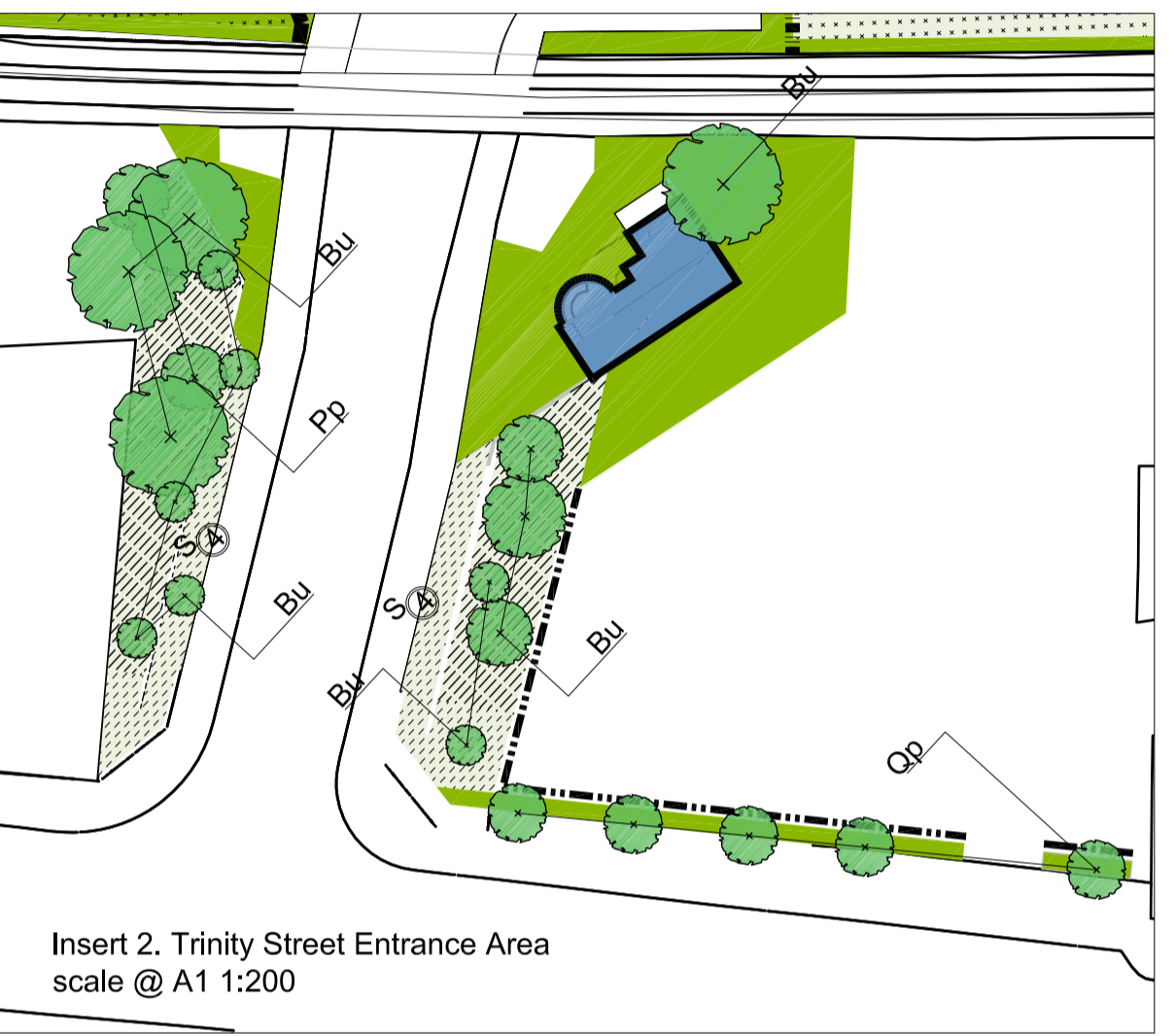


For Pauls Quay Landing
Refer to insert 1.



For Trinity Street Entrance
Refer to insert 2.

Insert 1. Pauls Quay Landing
scale @ A1 1:200



Notes
Drawing should be read in conjunction with all other drawing information.
All plant material (shrubs, hedges and grasses) should be from a proven, sustainable source and be of local provenance.

Code	Species	Girth Cm	Height	Spec
Trees				
Ar	Proposed Street Trees	25-30	3-4.5m	4x Rb / 2m clear stem
Ph	Acer rubrum	40-45	min5m	5x Rb / 2.2m clear stem
Pc	Platanus hispanica	40-45	min5m	5x Rb / 2.2m clear stem
Qp	Quercus palustris	30-35	min5m	4x Rb / 2m clear stem
Qi	Quercus ilex	30-35	4-5m	4x Rb / 2.2m clear stem
Proposed Tree Planting				
Aa	Amelanchier arborea	25-30	4-5m	4x Rb / 2m clear stem
Bu	Betula utilis	30-35	4-5m	5x Rb / 2m clear stem
Bms	Betula utilis (ms)	N/A	3-4m	4x Rb / Multistem (5 breaks)
Cs	Cercis siliquastrum	25-30	4-5m	4x Rb / 2m clear stem
Ck	Cornus kousa (ms)	N/A	3-4m	4x Rb / Multistem (5 breaks)
Rt	Rhus typhina (ms)	N/A	3-4m	4x Rb / Multistem (5 breaks)
Cm	Crataegus monogyna	14-16	4-5m	3x Rb / 2m clear stem
Ca	Corylus avellana	14-16	4-5m	3x Rb / 2m clear stem
Ms	Malus sylvestris	14-16	6-6.5m	3x Rb / 2m clear stem
Tb	Taxus baccata	N/A	1.5-2m	6x Rb / Feathered
Ps	Prunus spinosa	14-16	min5m	3x Rb / 2m clear stem
Ac	Amelanchier canadensis (ms)	N/A	3-4m	5x Rb / Multi stem (5 breaks)
Gt	Gleditsia tricanthos 'Sunburst'	25-30	6-6.5m	4x Rb / 2m clear stem
Pp	Pinus pinea	N/A	3-4m	4x Rb / 2m clear stem

%	Species	Height (cm)	Spec	Density (m2)
Shrubs - Railway Edge Mix				
15	Corylus avellana	60-80	1+1 / Br	3
15	Cornus sanguinea	60-80	1+2 / Br	3
25	Euonymus europaeus	60-80	1+2 / Br	3
35	Symphoricarpos albus	60-80	1+1 / Br	4
10	Viburnum opulus	60-80	1+2 / Br	3

%	Species	Height (cm)	Spec	Density (m2)
Shrubs - Coastal Mix				
40	Armeria maritima		3L	9
10	Aubrieta x cultorum		2L	7
10	Cerastium tomentosum		2L	9
5	Erigeron glaucus		3L	7
15	Molinia caerulea		5L	6
5	Saxifraga x urbium		3L	9
5	Sedum album		3L	7
5	Amelanchier canadensis	3.5-4m	Rb	0.05
5	Cercis siliquastrum	3.5-4m	Rb	0.05

%	Species	Height (cm)	Spec	Density (m2)
Shrubs - Ground Cover Mixes				
Code:	S1			
50	Saxifraga x urbium		3L	9
30	Viburnum davidii	60-80	15L	5
10	Phlox subulata 'Modanels Cushion'		3L	9
10	Tiarella cordifolia		3L	9
Code:	S2			
80	Hedera hibernica	60-80	3L	7
20	Pachysandra terminalis 'Variegata'		2L	9
Code:	S3			
40	Persicaria bistorta superbum		3L	9
15	Bergenia cordifolia	10-15	2L	7
20	Epimedium grandiflorum		3L	7
25	Molinia caerulea		5L	6
Code:	S4			
100	Euonymus fortunei 'Kewensis'	20-30	3L	9

%	Species	H (cm)	Spec	Density (m2)
Shrubs - Defensive Shrub Mix				
40	Rubus cockburnianus	60-80	10L (min 5 breaks)	5
30	Cornus alba siberica	60-80	10L (min 5 breaks)	5
30	Pinus mugo	40-60	15L	3

%	Species	Height (cm)	Spec	Density (linear m)
Hedge Planting - Formal				
100	Carpinus betula	80-120	5L container / bushy	7

%	Species	Height (cm)	Spec	Density (linear m)
Hedge Planting - Native				
60	Crataegus monogyna	60-80	1+1 Br	7
15	Ilex aquifolium	60-80	1+1 Br	7
25	Prunus spinosa	60-80	1+1 Br	7

Grass Seed Mix
All grass seed mixes to be supplied by EcoSeed or equal approved (seeds to be sown at 3-5g per metre square). Seed mixes to be developed for all areas.

Proposed Wildflower Grassland
Slender creeping red fescue (*Festuca rubra* ssp *itoralis*)
Crested Dogstail (*Cynosurus cristatus*)
Common Bent (*Agrostis capillaris*)
Meadow Fescue (*Festuca pratensis*)
Sweet Vernal Grass (*Anthoxanthum odoratum*)
Devils bit scabious (*Succisa pratensis*)
Ribwort plantain (*Plantago lanceolata*)
Yarrow (*Achillea millefolium*)
Common Knapweed (*Centaurea nigra*)
Meadow Sweet (*Filipendula ulmaria*)
Oxeye daisy (*Leucanthemum vulgare*)
Selfheal (*Prunella vulgaris*)
Meadow buttercup (*Ranunculus acris*)
Field Scabious (*Knautia arvensis*)
Yellow rattle (*Rhinanthus minor*)
Birdfoot trefoil (*Lotus corniculatus*)
Tufted vetch (*Vicia cracca*)

Green Roof
Pre-grown instant vegetation layer supplied in a soil free coconut fibre mat.
Proposed Sedum Roof Species:
Sedum Acre aureum
Sedum Album Coral Carpet
Sedum Album Althoum
Sedum Album Mini
Sedum Hispanicum
Sedum Summer Glory
Sedum Relexum
Sedum Weihenstephaner Gold
Sedum Voodoo

Pre-grown instant vegetation layer supplied in a soil free coconut fibre mat.
Intensive Areas Species:
Armeria maritima
Achillea millefolium
Silene uniflora
Lotus corniculatus
Leucanthemum vulgare
Thymus vulgaris

Proposed Tree Planting
(refer to planting schedule and detail 901)

Proposed Street Trees
(refer to planting schedule and detail 901)

Proposed Shrubs Coastal Mix
(refer to planting schedule and detail 902)

Proposed Shrubs Defensive Mix
(refer to planting schedule and detail 902)

Proposed Shrubs Ground Cover
(refer to planting schedule and detail 902)

Proposed Wildflower Grassland
(refer to planting schedule and detail 902)

Proposed Shrubs Railway Edge
(refer to planting schedule and detail 902)

Proposed Reinforced Amenity Grass

Proposed Formal Hedge
(refer to planting schedule and detail 903)

Proposed Native Hedge
(refer to planting schedule and detail 903)

Proposed Play Area
(refer to SK13)

Proposed Buildings
(For sedum roof locations refer to architects drawings)

Revision	Description	Date	Initial
P00	DRAFT Planning Issue	18.11.30	DM
P01	Amendment to entrance	18.12.03	DM
P02	Issued for planning	18.12.11	DM

the paulhogarth company
landscape architecture urban design
potters quay, 5 ravenhill road, belfast BT6 6DN
telephone: 028 9073 8800 fax: 028 9073 2705
email: belfast@paulhogarth.com www.paulhogarth.com

client
WEXFORD COUNTY COUNCIL

project title
TRINITY WHARF - MASTERPLAN

drawing title
PLANTING PLAN

drawn by	checked by	scale @ A1	revision
DM	AM	1:500	P02

project no. 1125 date Nov 2018 drawing no. L-PP-001 status: **Planning**