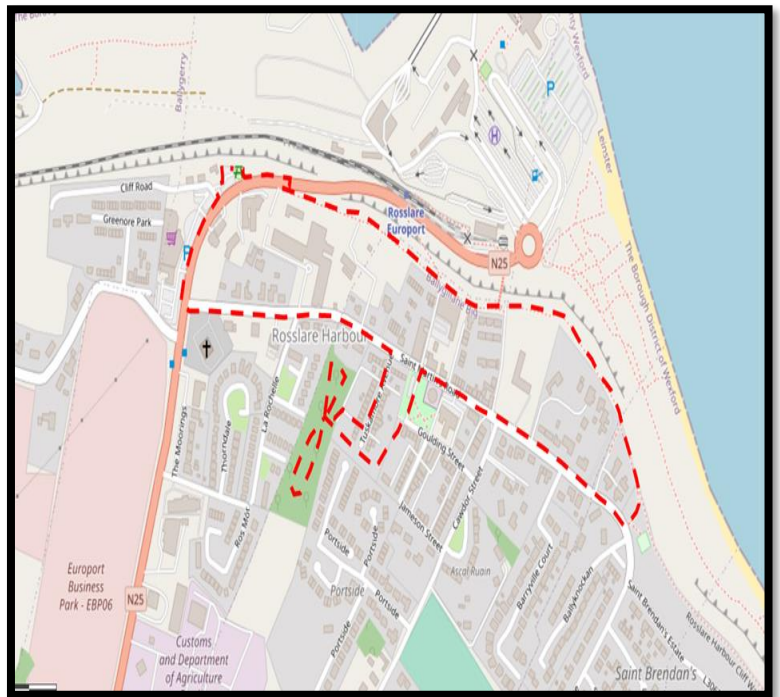


The Cliff-Village Walkway, Rosslare Harbour

Coordinates: 52°15'04.3"N
6°20'32.6"W



Trail Details

The carpark and viewing point for this trail are located off the N25 directly before entering Rosslare Ferryport. The fully accessible multi-user trail travels from this point for approximately half a kilometre. Along the route, points of interest and signage are noted, with seating and picnic benches allowing you to have a rest and take in the amazing and ever-changing views out to sea.



Approach

This multi-user trail continues on to the watchman tower, where the path divides, with the fully accessible route looping back through the village past the Memorial and Kirwans' Garden and towards the trail head viewing point overlooking Rosslare Ferryport. Once again there are fantastic sea views, with seating and picnic benches.



Viewing Points

The visitor is spoiled for choice of viewing points located along this trail. Views take you out to sea and the activity that happens at this port with ships coming and going. The seating dotted throughout the route encourages the visitor to take time out and enjoy the views, whilst seats have backs and armrests for comfort and support.



Picnic Benches

Picnic benches located along the route offer the visitor the opportunity to take a break and enjoy the sea views.

