



M11 Gorey to Enniscorthy Scheme



Environmental Impact Statement Volume 4 - Figures



April 2009



M11 Gorey to Enniscorthy Scheme

Environmental Impact Statement Volume 4 - Figures

Drawing List

Chapter 1:	Proposed Scheme Location Plan	Chapter 11:	Hydrological Map
Chapter 2:	Outline of Main Alternatives		Water Quality Monitoring Locations
Chapter 3:	Proposed Scheme General Layout		Bedrock Aquifer Map
	Proposed Scheme Plan & Profile		Groundwater Vulnerability Map
	Proposed Drainage Outfall Locations	Chapter 12:	Rosslare Windrose
	Landownership		Air Monitoring & Receptor Locations
Chapter 4:	Traffic Flow Forecast Locations	Chapter 13:	Noise Monitoring Locations
Chapter 5:	Features of Socio-Economic Interest		Extent of Noise Model
Chapter 6:	Agricultural Landowners		Noise Receiver Locations
Chapter 7:	Property Owners (Material Assets)	Chapter 14:	Noise Mitigation Measures
Chapter 8:	Existing Major Utilities (Material Assets)		Landscape Character Areas
Chapter 9:	Fauna (Bats and Owls & Badgers and Otters)	Chapter 15:	Visual Impact Assessment & Landscape Masterplan
	Habitats		Archaeology
	Water Quality		
	Designated Sites		
Chapter 10:	Teagasc Soils Map		
	Geomorphology Map		
	Subsoils Map		
	Bedrock Map		

M11 Gorey to Enniscorthy Scheme

Environmental Impact Statement Volume 4 - Figures

Chapter 13

Noise Monitoring Locations

Noise Monitoring Locations Sheet 1 of 6
Noise Monitoring Locations Sheet 2 of 6
Noise Monitoring Locations Sheet 3 of 6
Noise Monitoring Locations Sheet 4 of 6
Noise Monitoring Locations Sheet 5 of 6
Noise Monitoring Locations Sheet 6 of 6

Figure 13.1.1
Figure 13.1.2
Figure 13.1.3
Figure 13.1.4
Figure 13.1.5
Figure 13.1.6

Noise

Extent of Noise Model

Figure 13.2

Noise Receiver Locations

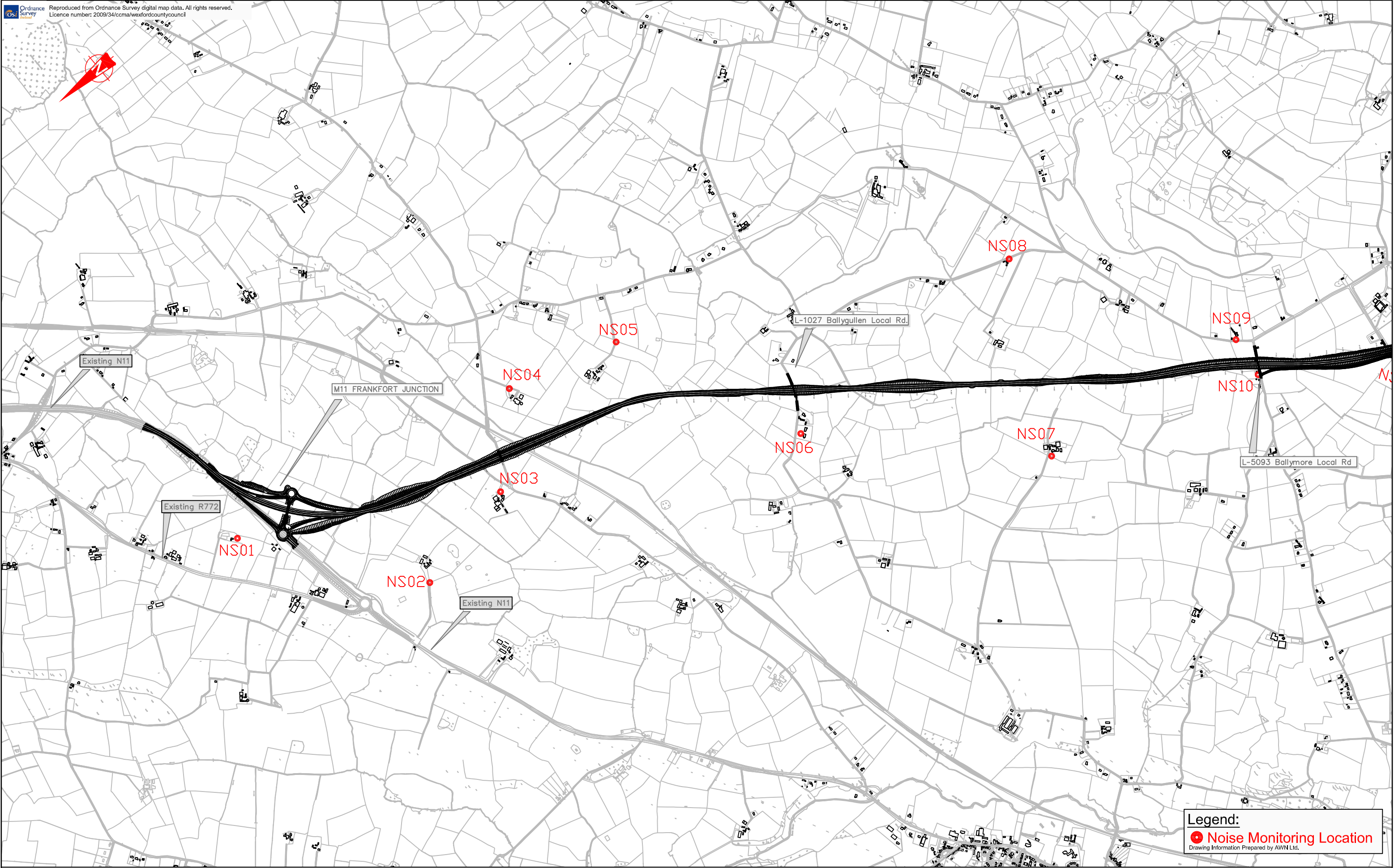
Noise Receiver Locations Sheet 1 of 6
Noise Receiver Locations Sheet 2 of 6
Noise Receiver Locations Sheet 3 of 6
Noise Receiver Locations Sheet 4 of 6
Noise Receiver Locations Sheet 5 of 6
Noise Receiver Locations Sheet 6 of 6

Figure 13.3.1
Figure 13.3.2
Figure 13.3.3
Figure 13.3.4
Figure 13.3.5
Figure 13.3.6

Noise Mitigation Measures

Noise Mitigation Measures Sheet 1 of 4
Noise Mitigation Measures Sheet 2 of 4
Noise Mitigation Measures Sheet 3 of 4
Noise Mitigation Measures Sheet 4 of 4

Figure 13.4.1
Figure 13.4.2
Figure 13.4.3
Figure 13.4.4



Legend:
● Noise Monitoring Location
Drawing Information Prepared by AWN Ltd.

transport21
progress in motion

NDP
National Development Plan 2007 - 2013
An Roinn Iompair
Department of Transport

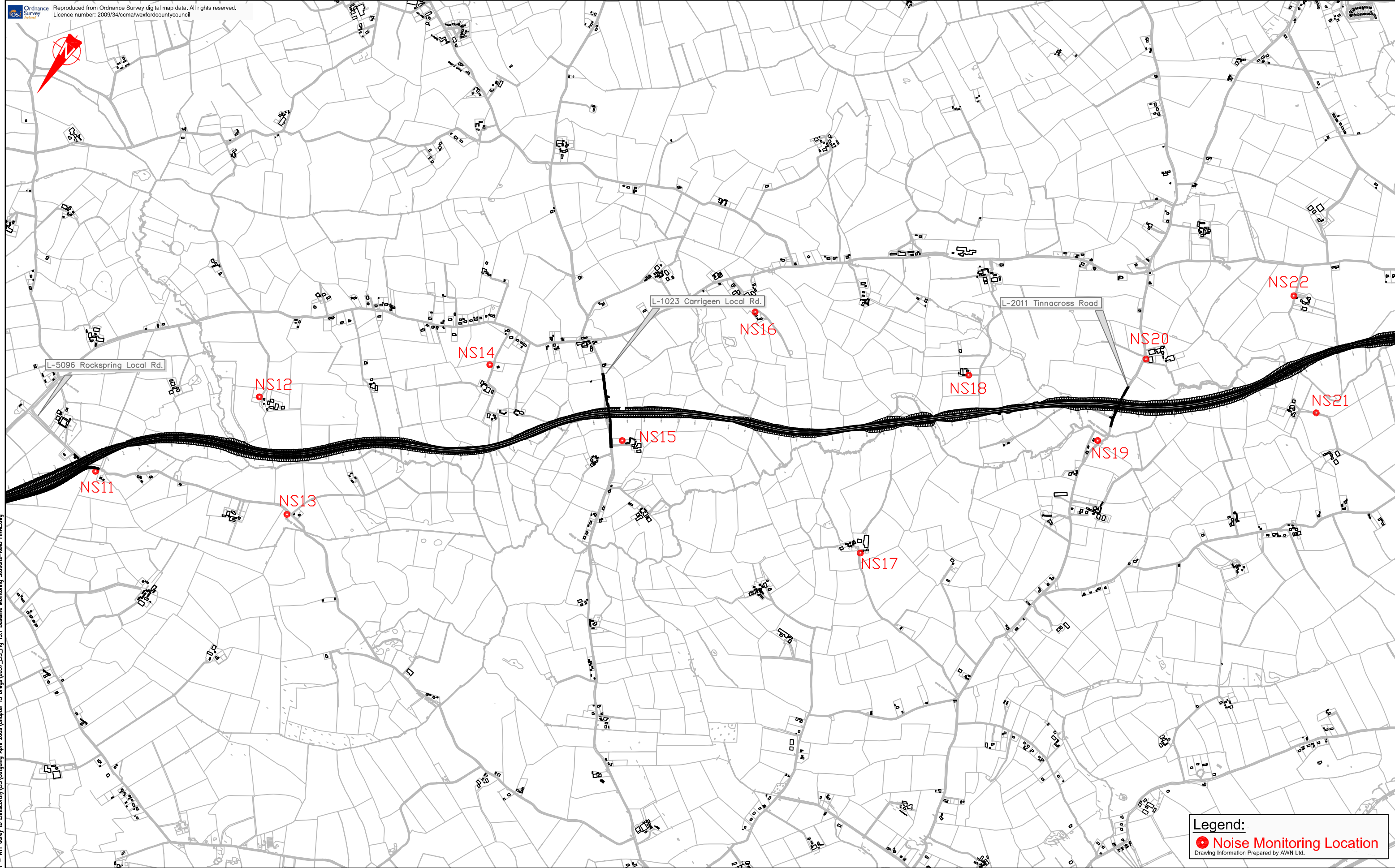
NRA
National Roads Authority
An tÚdarás um Boithre Náisiúnta

WEXFORD COUNTY COUNCIL
County Hall
Wexford
TRAMORE HOUSE ROAD DESIGN OFFICE
Tramore
Co. Waterford

Ryan Hanley WSP
Sherwood House, Sherwood Avenue, Taylor's Hill
Galway, Ireland
Tel: +353 (0)91 587116 Fax: +353 (0)91 587102
e-mail: rhwsp@ryanhaley.ie

Rev	By	Date	Description
A	DD	22/04/09	New Alignment
B	CM	29/04/09	Minor Text Amendments

Project: M11 Gorey to Enniscorthy Scheme			
Component: Environmental Impact Statement - Noise			
Title: Fig. 13.1.1 Noise Monitoring Locations			
Designed: N&R	Date: 18/12/08	File Name: 2057_N&R	Drawing No:
Drawn: DD	Date: 15/01/09	Original Scale: 1:2500 @ A1	Fig. 13.1.1 Rev B
Checked: TD	Date: 15/01/09	Date: 16/01/09	



ORIGINAL SIZE A1
H:\AutoCAD\2057 - N11 Gorey to Enniscorthy\ES\Outgoing April 2008\Chapter 13 Drawings\2057_ES_Fig 13.1 Baseline Monitoring Stations-RevB FINAL.dwg

progress in motion

National Development Plan 2007 - 2013

Department of Transport

National Roads Authority
An Údarás um Bóithre Náisiúnta

WEXFORD COUNTY COUNCIL
County Hall
Wexford

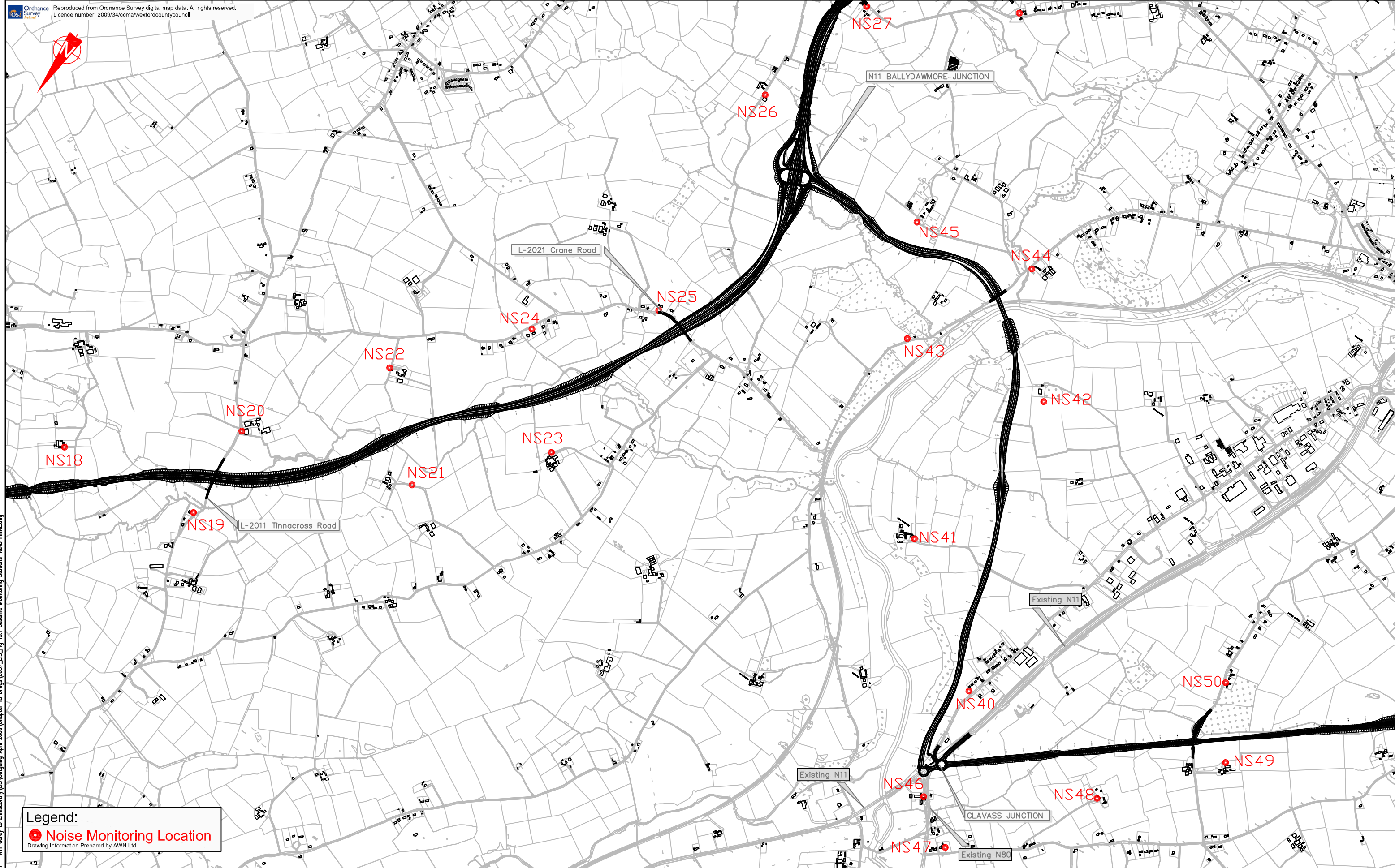
TRAMORE HOUSE
ROAD DESIGN OFFICE
Tramore
Co. Waterford

Ryan Hanley WSP

Sherwood House, Sherwood Avenue, Taylor's Hill
Galway, Ireland
Tel: +353 (0)91 587116 Fax: +353 (0)91 587102
e-mail: rhwsp@ryanhaley.ie

Rev	By	Date	Description
A	DD	22/04/09	Rev A
B	CM	29/04/09	Minor Text Amendments

Project: M11 Gorey to Enniscorthy Scheme			
Component: Environmental Impact Statement - Noise			
Title: Fig. 13.1.2 Noise Monitoring Locations			
Designed: N&R	Date: 18/12/08	File Name: 2057_N&R	Drawing No:
Drawn: DD	Date: 15/01/09	Original Scale: 1:2500 @ A1	Fig. 13.1.2 Rev B
Checked: TD	Date: 15/01/09	Date: 16/01/09	



ORIGINAL SIZE A1
H:\AutoCAD\2057 - N11 Gorey to Enniscorthy\ES\Outgoing April 2008\Chapter 13 Drawings\2057_ES_Fig 13.1 Baseline Monitoring Stations-RevB FINAL.dwg

progress in motion

National Development Plan 2007 - 2013

Department of Transport

National Roads Authority
An tÚdaráis um Bóithre Náisiúnta

WEXFORD COUNTY COUNCIL
County Hall
Wexford

TRAMORE HOUSE
ROAD DESIGN OFFICE
Tramore
Co. Waterford

Ryan Hanley WSP

Sherwood House, Sherwood Avenue, Taylor's Hill
Galway, Ireland
Tel: +353 (0)91 587116 Fax: +353 (0)91 587102
e-mail: rhwsp@ryanhanley.ie

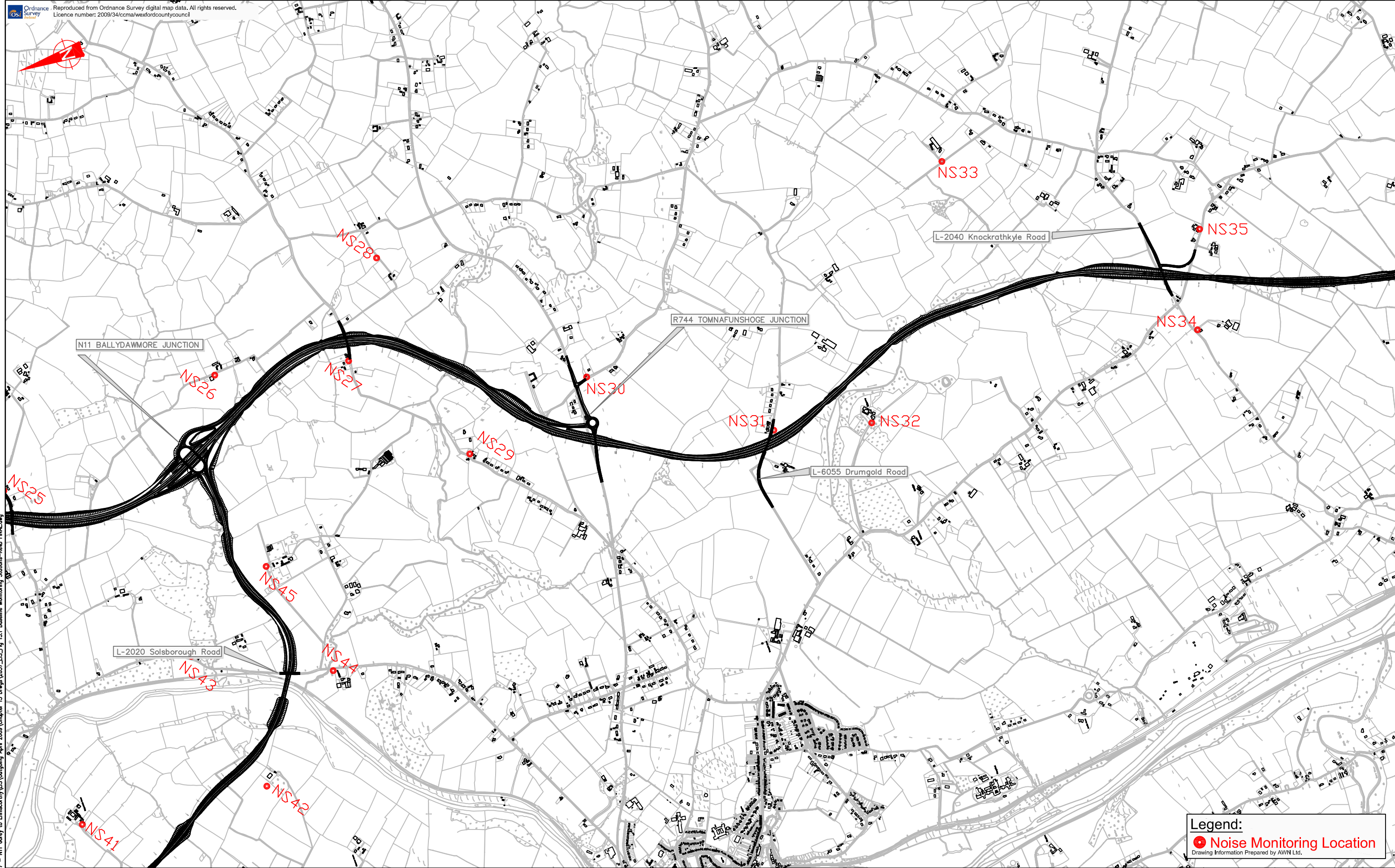
Rev	By	Date	Description
A	DD	22/04/09	New Alignment
B	CM	29/04/09	Minor Text Amendments

Project: **M11 Gorey to Enniscorthy Scheme**

Component: **Environmental Impact Statement - Noise**

Title: **Fig. 13.1.3 Noise Monitoring Locations**

Designed: N&R	Date: 18/12/08	File Name: 2057_N&R	Drawing No:
Drawn: DD	Date: 15/01/09	Original Scale: 1:2500 @ A1	Fig. 13.1.3 Rev B
Checked: TD	Date: 15/01/09	Date: 16/01/09	



transport121
progress in motion

NDP
National Development Plan 2007 - 2013
An Roinn Iompair
Department of Transport

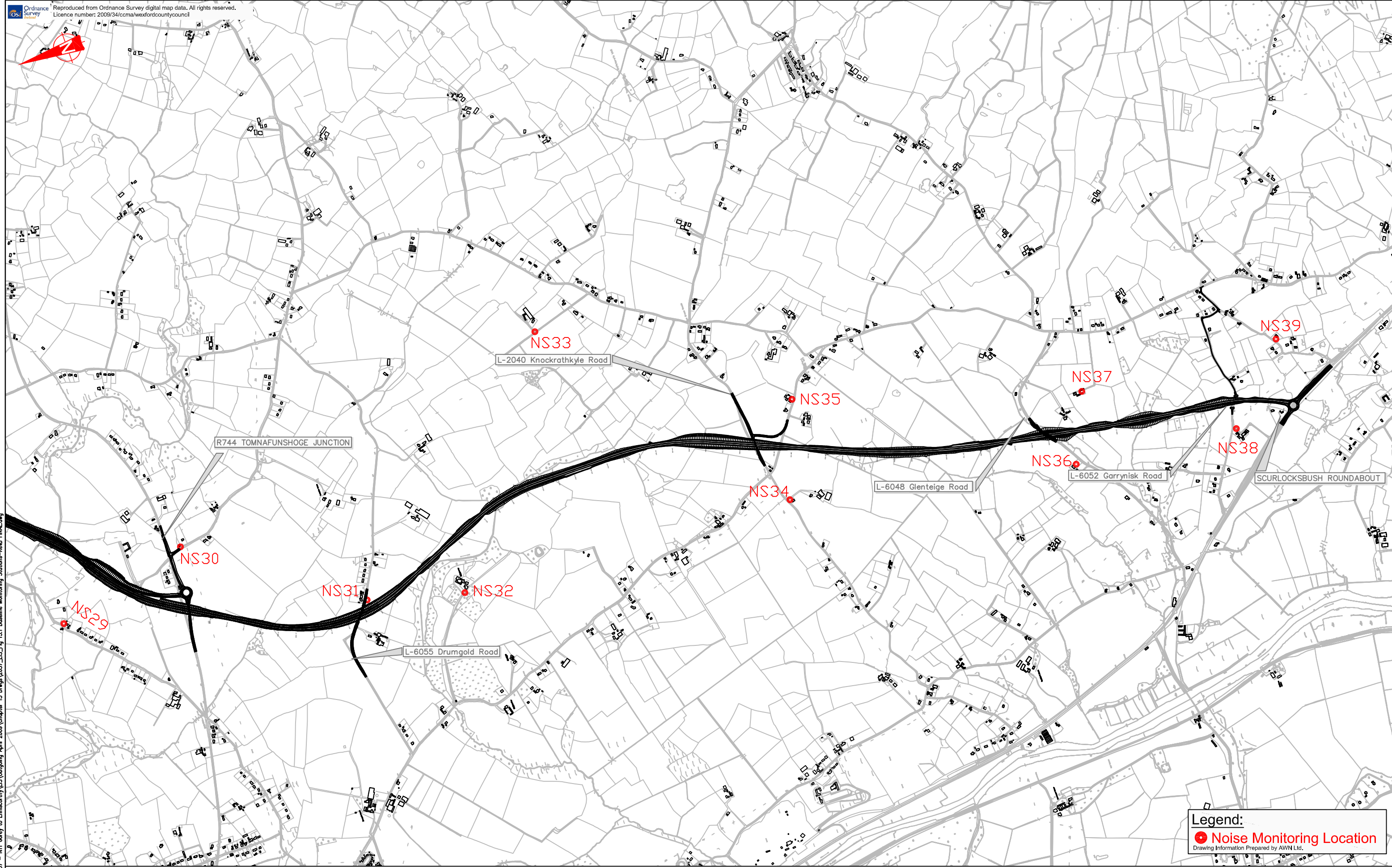
NRA
National Roads Authority
An tÚdarás um Boithre Náisiúnta

WEXFORD COUNTY COUNCIL
County Hall
Wexford
TRAMORE HOUSE
ROAD DESIGN OFFICE
Tramore
Co. Waterford

Ryan Hanley WSP
Sherwood House, Sherwood Avenue, Taylor's Hill
Galway, Ireland
Tel: +353 (0)91 587116 Fax: +353 (0)91 587102
e-mail: rhwsp@ryanhaley.ie

Rev	By	Date	Description
A	DD	22/04/09	New Alignment
B	CM	29/04/09	Minor Text Amendments

Project: M11 Gorey to Enniscorthy Scheme			
Component: Environmental Impact Statement - Noise			
Title: Fig. 13.1.4 Noise Monitoring Locations			
Designed: N&R	Date: 18/12/08	File Name: 2057_N&R	Drawing No:
Drawn: DD	Date: 15/01/09	Original Scale: 1:2500 @ A1	Fig. 13.1.4 Rev B
Checked: TD	Date: 15/01/09	Date: 16/01/09	



H:\AutoCAD\2057 - N11 Gorey to Enniscorthy\ES\Outgoing April 2008\Chapter 13 Dregs\2057_ES_Fig 13.1 Baseline Monitoring Stations-RevB.FINAL.dwg
ORIGINAL SIZE A1

progress in motion

National Development Plan 2007 - 2013

Department of Transport

National Roads Authority
An tÚdaráis um Bóithre Náisiúnta

WEXFORD COUNTY COUNCIL
County Hall
Wexford

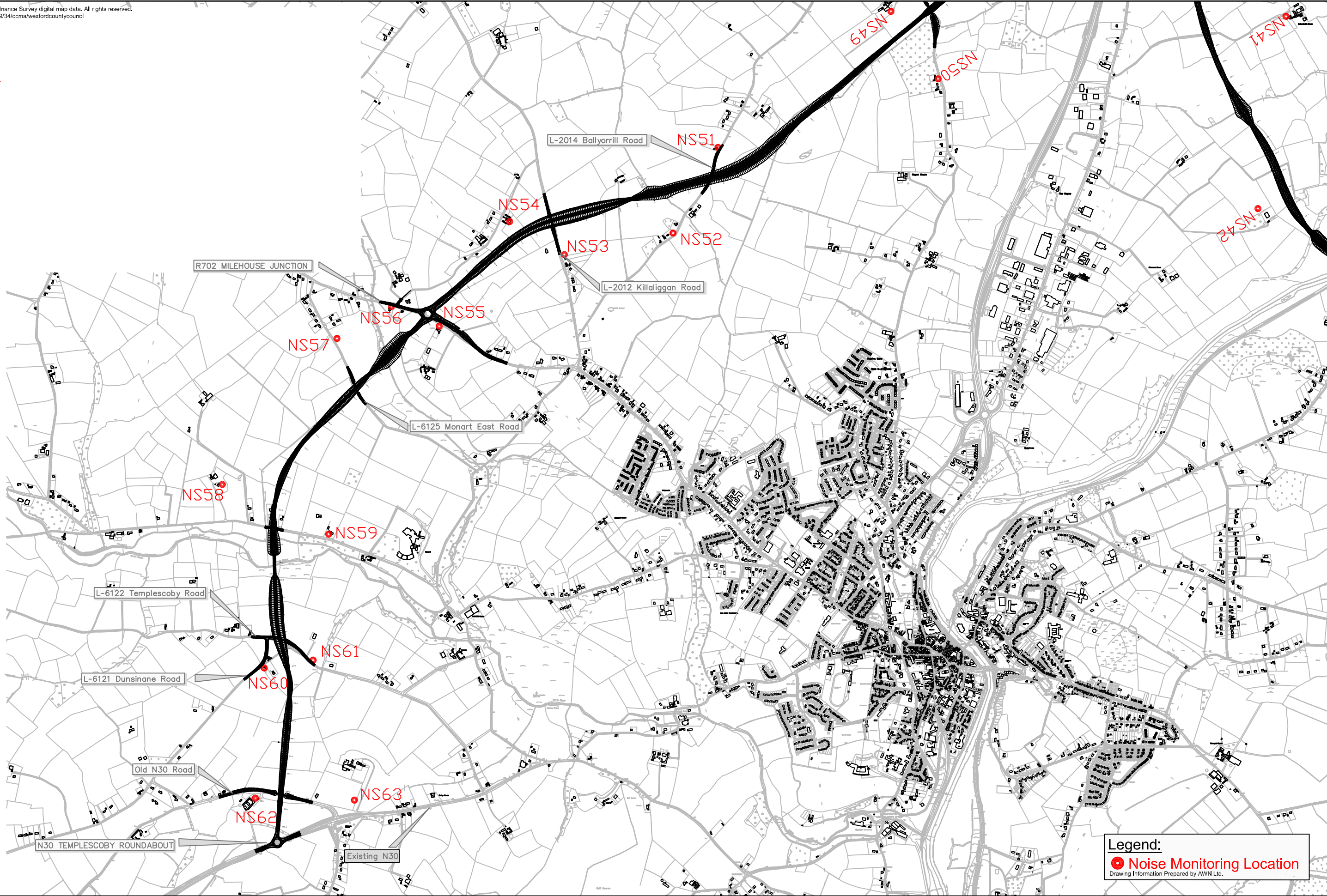
TRAMORE HOUSE
ROAD DESIGN OFFICE
Tramore
Co. Waterford

Ryan Hanley WSP

Sherwood House, Sherwood Avenue, Taylor's Hill
Galway, Ireland
Tel: +353 (0)91 587116 Fax: +353 (0)91 587102
e-mail: rhwsp@ryanhaley.ie

Rev	By	Date	Description
A	DD	22/04/09	New Alignment
B	CM	29/04/09	Minor Text Amendments

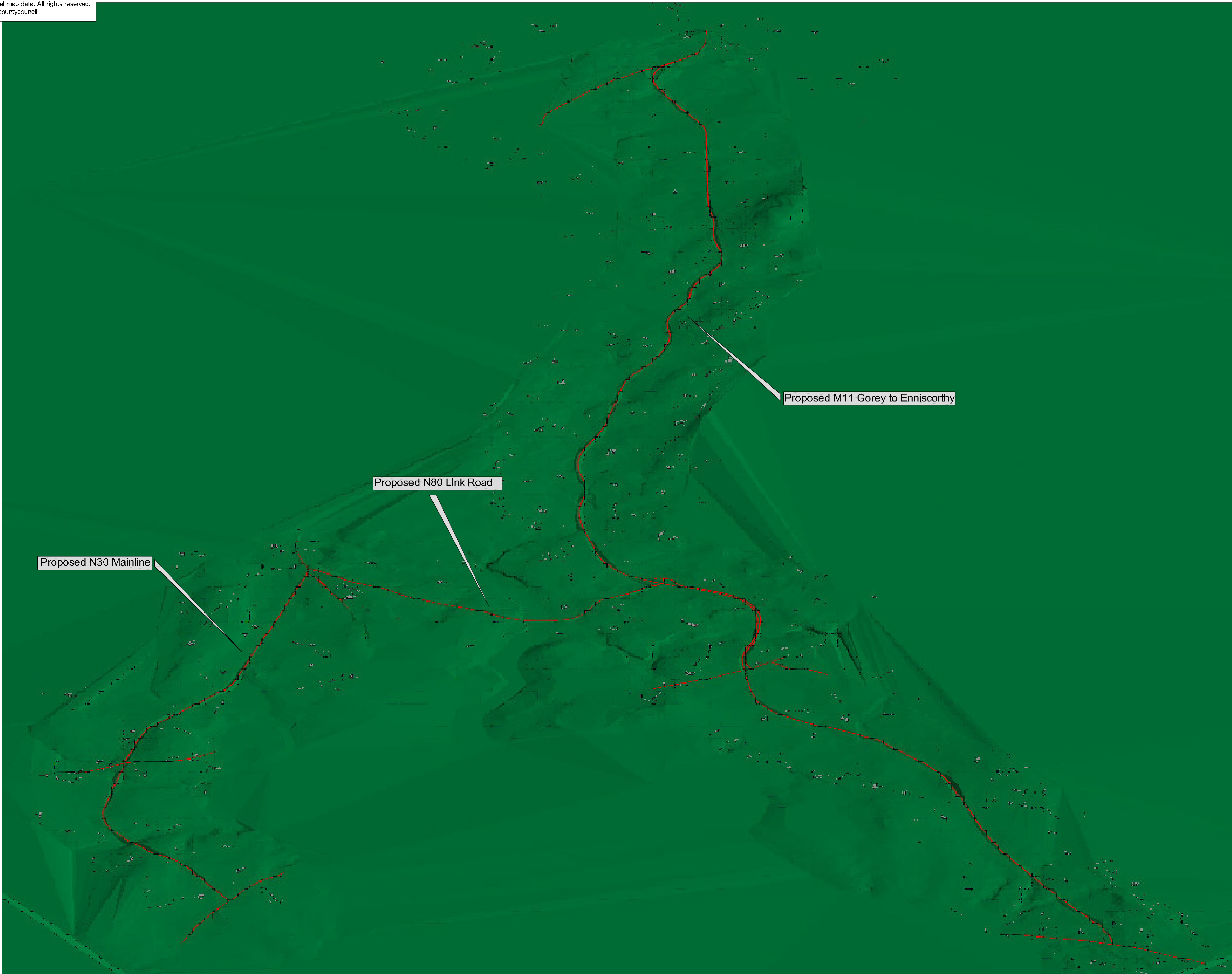
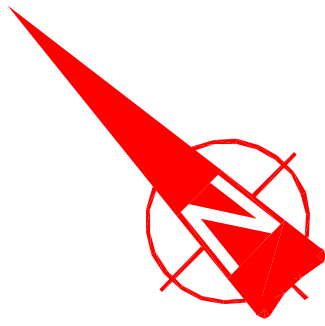
Project: M11 Gorey to Enniscorthy Scheme			
Component: Environmental Impact Statement - Noise			
Title: Fig. 13.1.5 Noise Monitoring Locations			
Designed: N&R	Date: 18/12/08	File Name: 2057_N&R	Drawing No:
Drawn: DD	Date: 15/01/09	Original Scale: 1:2500 @ A1	Fig. 13.1.5 Rev B
Checked: TD	Date: 15/01/09	Date: 16/01/09	



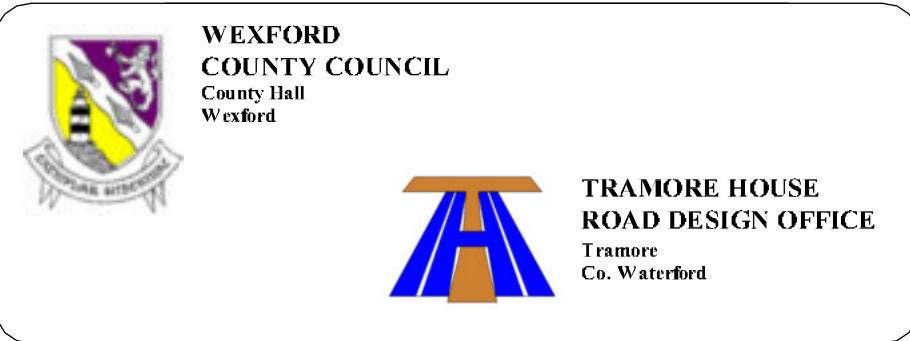
Legend:
● Noise Monitoring Location
Drawing Information Prepared by AWN Ltd.

Rev	By	Date	Description
A	DD	22/04/09	New Alignment
B	CM	29/04/09	Minor Text Amendments

Project: M11 Gorey to Enniscorthy Scheme			
Component: Environmental Impact Statement - Noise			
Title: Fig. 13.1.6 Noise Monitoring Locations			
Designed: IA	Date: 18/12/08	File Name: 2057_N&R	Drawing No:
Drawn: DD	Date: 16/01/09	Original Scale: 1:10,000 @A1	Fig. 13.1.6 Rev B
Checked: PG	Date: 16/01/09	Date: 16/01/09	

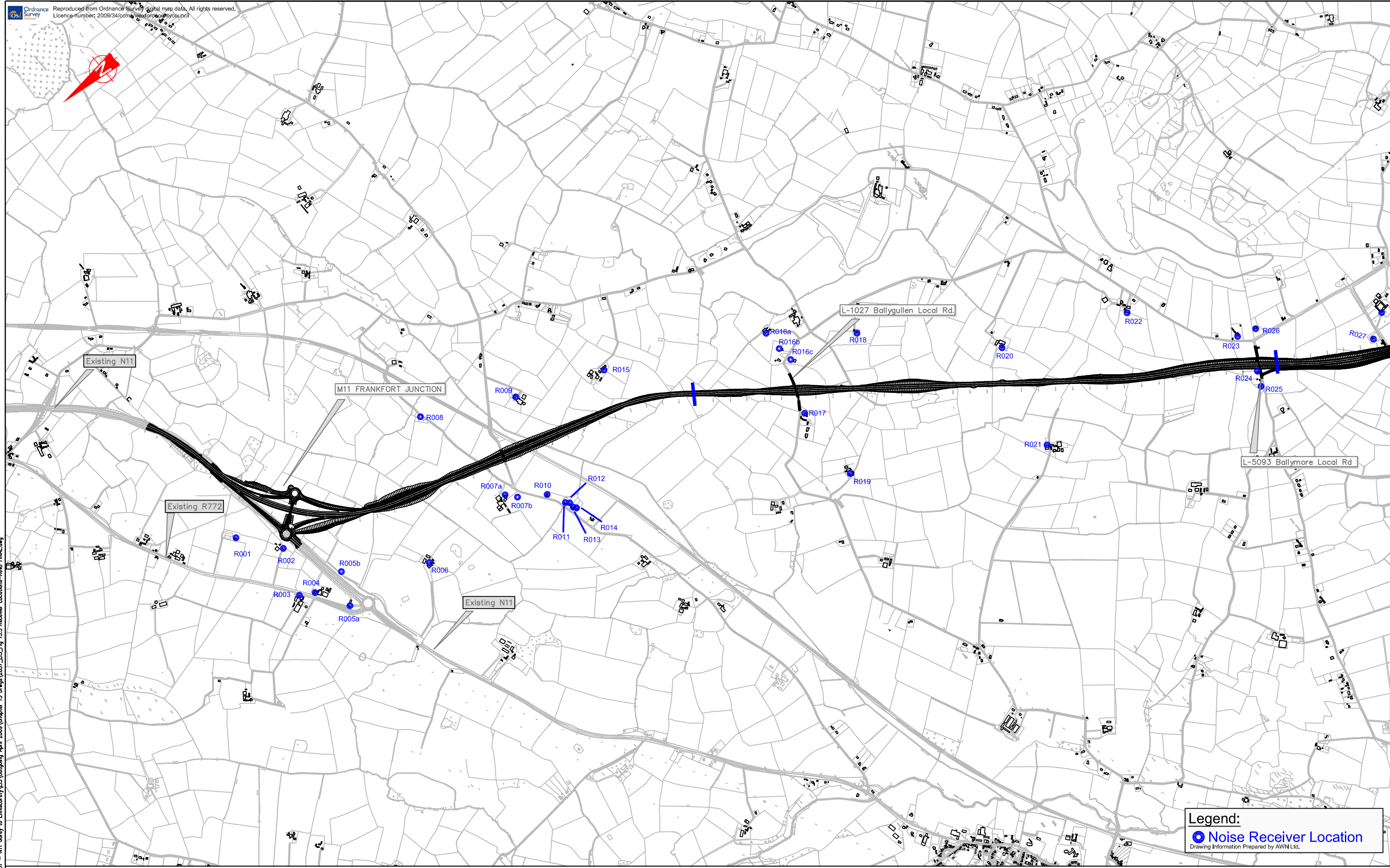


ORIGINAL SIZE A1
H:\AutoCAD\2057 - N11 Gorey to Enniscorthy\VES\Outgoing April 2009\Chapter 13 Drawings



Rev	By	Date	Description

Project: N11 Gorey to Enniscorthy Scheme				
Component: EIS Report Drawings				
Title: Fig. 13.2 Noise Model Extents				
Designed: DD	Date: 06/05/09	File Name: Fig. 13.2	Drawing No: Fig. 13.2	
Drawn: DD	Date: 06/05/09	Original Scale: Not to Scale		
Checked: PG	Date: 06/05/09	Date: 06/05/09		



ORIGINAL SIZE: A1
H:\AutoCAD\2057 - N11 Gorey to Enniscorthy\ES\Outgoing April 2009\Chapter 13 Drawings\2057_EIS_Fig 13.3 Receiver Locations-RevB FINAL.dwg

progress in motion

National Development Plan 2007 - 2013

National Roads Authority
An tÚdarás um Bóithre Náisiúnta

WEXFORD COUNTY COUNCIL
County Hall
Wexford

TRAMORE HOUSE
ROAD DESIGN OFFICE
Tramore
Co. Waterford

Ryan Hanley WSP

Sherwood House, Sherwood Avenue, Taylor's Hill
Galway, Ireland
Tel: +353 (0)91 587116 Fax: +353 (0)91 587102
e-mail: rthwsp@ryanhanley.ie

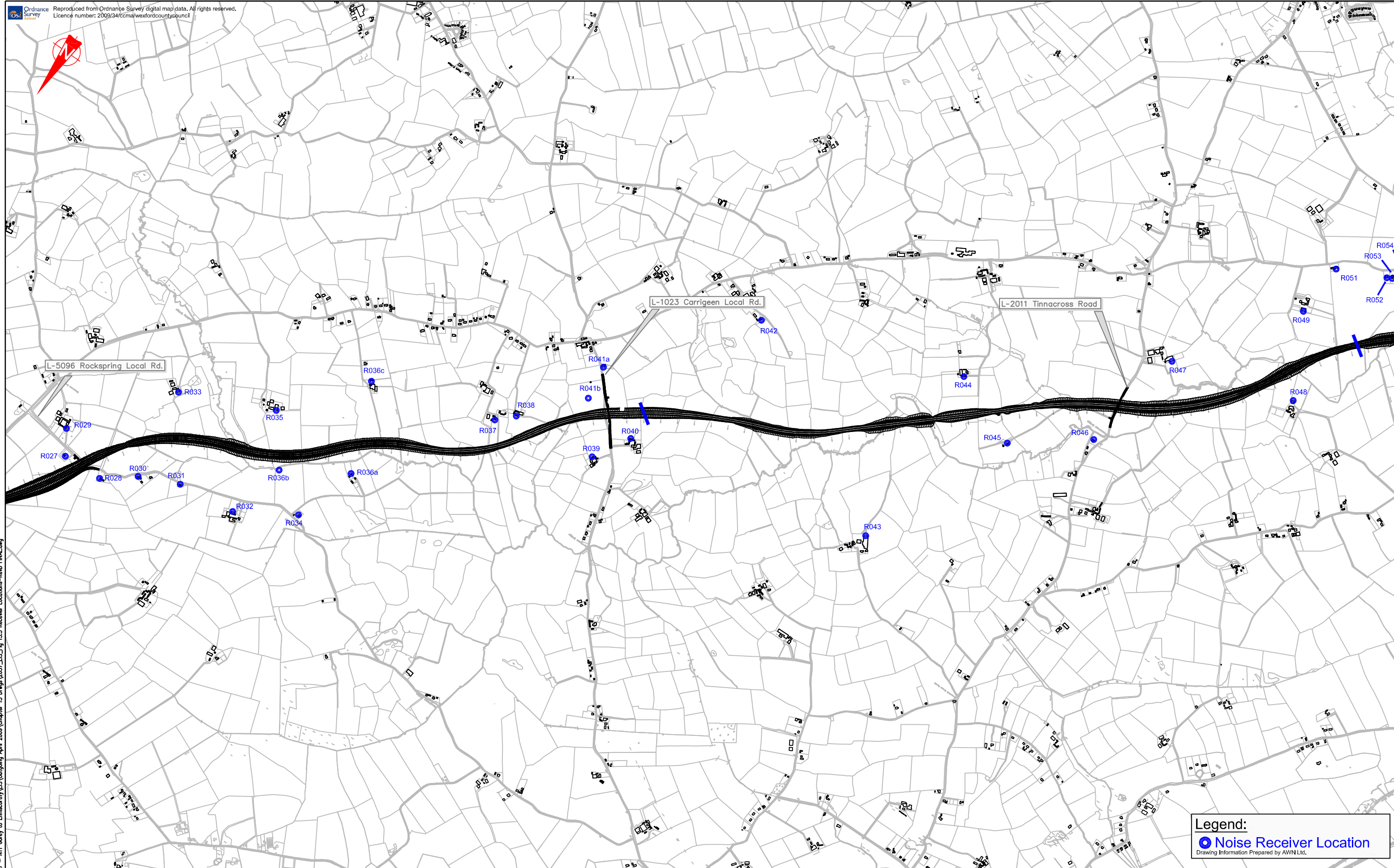
Rev	By	Date	Description
A	DD	22/04/09	New Alignment
B	CM	29/04/09	Minor Text Amendments

Project: **M11 Gorey to Enniscorthy Scheme**

Component: **Environmental Impact Statement - Noise**

Title: **Fig. 13.3.1 Noise Reciever Locations**

Designed: N&R	Date: 18/12/08	File Name: 2057_N&R	Drawing No:
Drawn: DD	Date: 15/01/09	Original Scale: 1:2500 @ A1	Fig. 13.3.1 Rev B
Checked: TD	Date: 15/01/09	Date:	16/01/09



Legend:

Noise Receiver Location

Drawing Information Prepared by AWN Ltd.

ORIGINAL SIZE: A1 H:\AutoCAD\2057 - N11 Gorey to Enniscorthy\GIS\Outgoing April 2009\Chapter 13 Drawings\2057_EIS_Fig 13.3 Receiver Locations-Rev6 FINAL.dwg



progress in motion



National Development Plan 2007 - 2013



Department of Transport



National Roads Authority



WEXFORD COUNTY COUNCIL
County Hall
Wexford



TRAMORE HOUSE
ROAD DESIGN OFFICE
Tramore
Co. Waterford

Ryan Hanley WSP

Sherwood House, Sherwood Avenue, Taylor's Hill
Galway, Ireland
Tel: +353 (0)91 587116 Fax: +353 (0)91 587102
e-mail: rhwsp@ryanhanley.ie

Rev	By	Date	Description
A	DD	22/04/09	New Alignment
B	CM	29/04/09	Minor Text Amendments

Project:

M11 Gorey to Enniscorthy Scheme

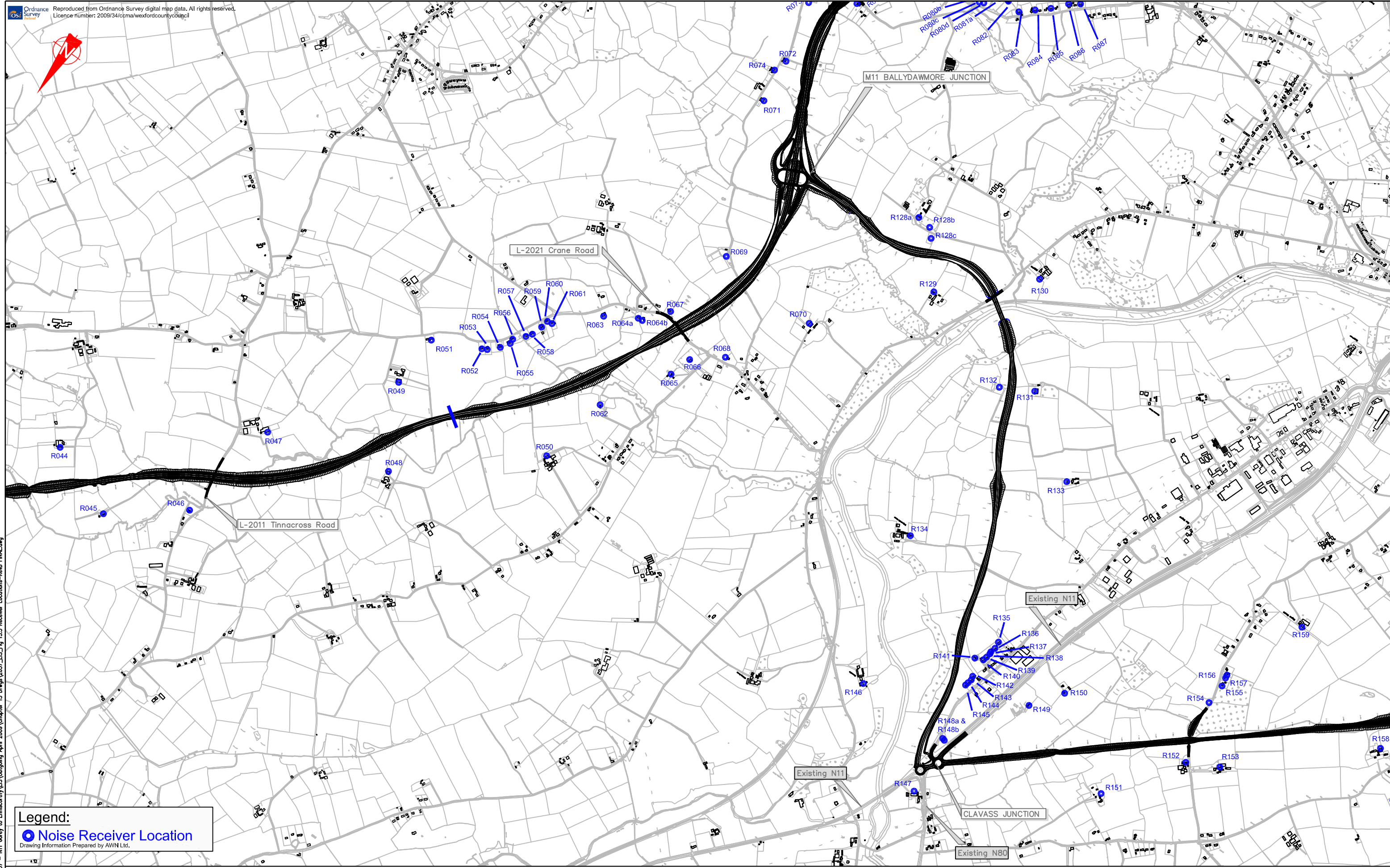
Component:

Environmental Impact Statement - Noise

Title:

Fig. 13.3.2 Noise Reciever Location

Designed: N&R	Date: 18/12/08	File Name: 2057_N&R	Drawing No:
Drawn: DD	Date: 15/01/09	Original Scale: 1:2500 @ A1	Fig. 13.3.2 Rev B
Checked: TD	Date: 15/01/09	Date:	16/01/09



ORIGINAL SIZE: A1 H:\AutoCAD\2057 - N11 Gorey to Enniscorthy\GIS\Outgoing April 2009\Chapter 13 Dregs\2057_EIS_Fig 13.3 Receiver Locations-Rev6 FINAL.dwg

Legend:

Noise Receiver Location

Drawing Information Prepared by AWN Ltd.

transport21

progress in motion

NDP

National Development Plan 2007 - 2013

An Roinn Iompair

Department of Transport

NRA

National Roads Authority

An tÚdarás um Bóithre Náisiúnta

WEXFORD COUNTY COUNCIL

County Hall

Wexford

TRAMORE HOUSE

ROAD DESIGN OFFICE

Tramore

Co. Waterford

Ryan Hanley WSP

Sherwood House, Sherwood Avenue, Taylor's Hill

Galway, Ireland

Tel: +353 (0)91 587116 Fax: +353 (0)91 587102

e-mail: rhwsp@ryanhanley.ie

Rev	By	Date	Description
A	DD	22/04/09	New Alignment
B	CM	29/04/09	Minor Text Amendments

Project:

M11 Gorey to Enniscorthy Scheme

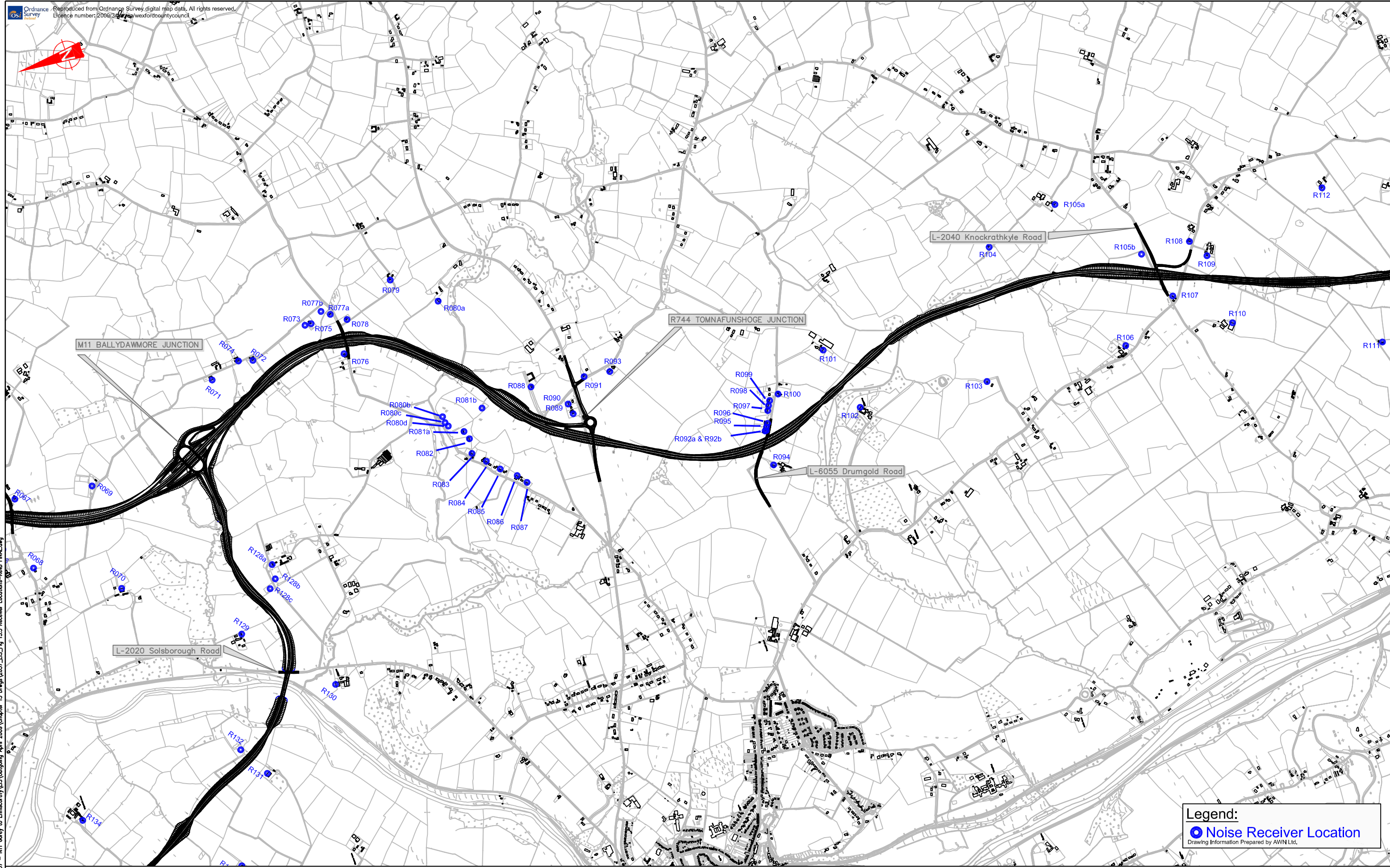
Component:

Environmental Impact Statement - Noise

Title:

Fig. 13.3.3 Noise Reciever Locations

Designed: N&R	Date: 18/12/08	File Name: 2057_N&R	Drawing No:
Drawn: DD	Date: 15/01/09	Original Scale: 1:2500 @ A1	Fig. 13.3.3 Rev B
Checked: TD	Date: 15/01/09	Date:	16/01/09



Legend:
● Noise Receiver Location
Drawing Information Prepared by AWN Ltd.

ORIGINAL SIZE: A1
H:\AutoCAD\2057 - N11 Gorey to Enniscorthy\GIS\Outgoing April 2009\Chapter 13 Drawings\2057_EIS_Fig 13.3 Receiver Locations-RevB FINAL.dwg



progress in motion



National Development Plan 2007 - 2013



National Roads Authority
An tÚdarás um Bóithre Náisiúnta



WEXFORD COUNTY COUNCIL
County Hall
Wexford



TRAMORE HOUSE
ROAD DESIGN OFFICE
Tramore
Co. Waterford



Ryan Hanley WSP

Sherwood House, Sherwood Avenue, Taylor's Hill
Galway, Ireland
Tel: +353 (0)91 587116 Fax: +353 (0)91 587102
e-mail: rhwsp@ryanhanley.ie

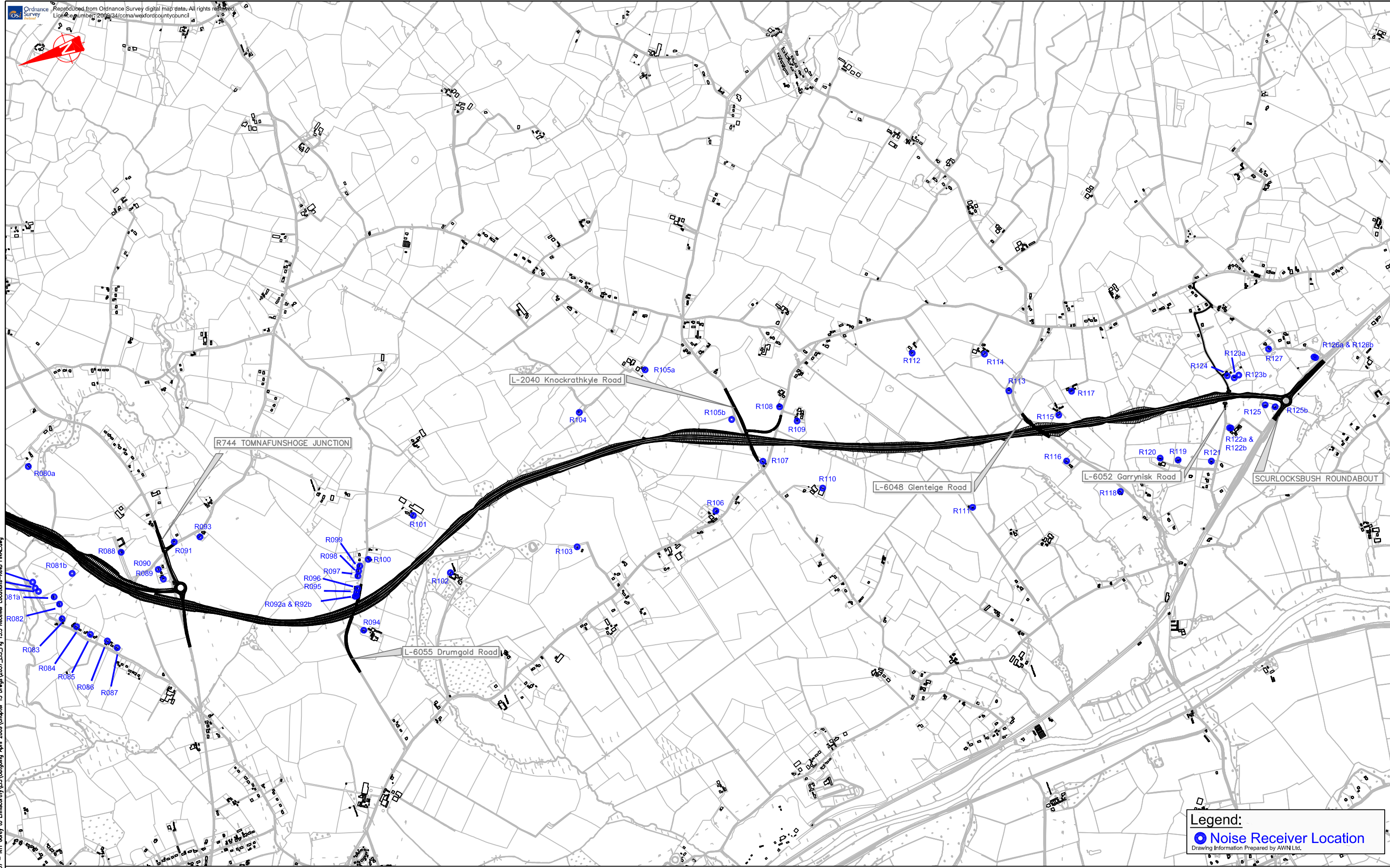
Rev	By	Date	Description
A	DD	22/04/09	New Alignment
B	CM	29/04/09	Minor Text Amendments

Project: **M11 Gorey to Enniscorthy Scheme**

Component: **Environmental Impact Statement - Noise**

Title: **Fig. 13.3.4 Noise Reciever Location**

Designed: N&R	Date: 18/12/08	File Name: 2057_N&R	Drawing No:
Drawn: DD	Date: 15/01/09	Original Scale: 1:2500 @ A1	Fig. 13.3.4 Rev B
Checked: TD	Date: 15/01/09	Date:	16/01/09



Legend:

Noise Receiver Location

Drawing Information Prepared by AWN Ltd.

ORIGINAL SIZE: A1 H:\AutoCAD\2057 - N11 Gorey to Enniscorthy\GIS\Outgoing April 2009\Chapter 13 Drawings\2057_EIS_Fig 13.3 Receiver Locations-Rev6 FINAL.dwg

transport21

progress in motion

NDP

National Development Plan 2007 - 2013

An Roinn Iompair

Department of Transport

NRA

National Roads Authority

An tÚdarás um Bóithre Náisiúnta

WEXFORD COUNTY COUNCIL

County Hall

Wexford

TRAMORE HOUSE

ROAD DESIGN OFFICE

Tramore

Co. Waterford

Ryan Hanley WSP

Sherwood House, Sherwood Avenue, Taylor's Hill

Galway, Ireland

Tel: +353 (0)91 587116 Fax: +353 (0)91 587102

e-mail: rthwsp@ryanhanley.ie

Rev	By	Date	Description
A	DD	22/04/09	New Alignment
B	CM	29/04/09	Minor Text Amendments

Project:

M11 Gorey to Enniscorthy Scheme

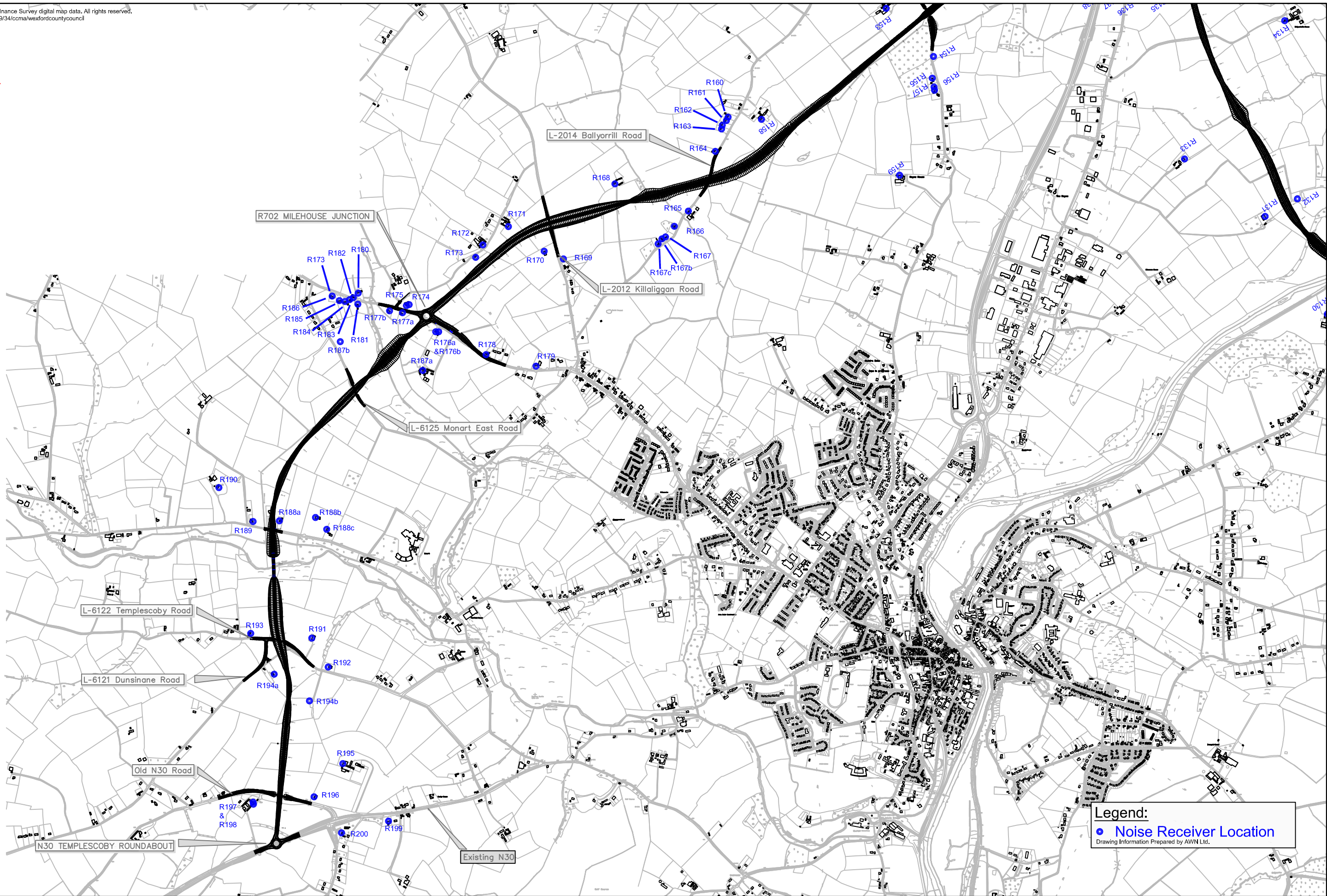
Component:

Environmental Impact Statement - Noise

Title:

Fig. 13.3.5 Noise Reciever Locations

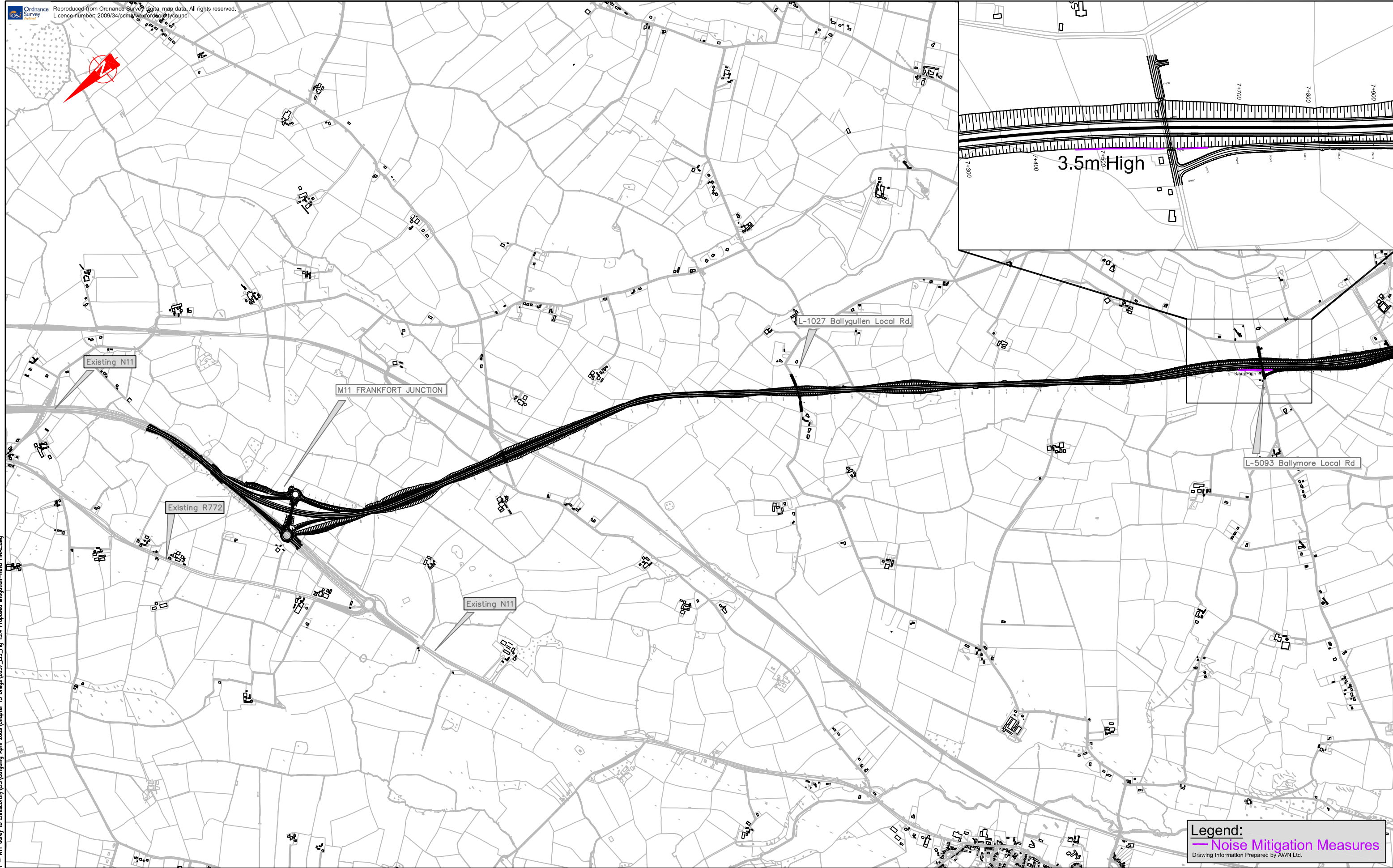
Designed: N&R	Date: 18/12/08	File Name: 2057_N&R	Drawing No:
Drawn: DD	Date: 15/01/09	Original Scale: 1:2500 @ A1	Fig. 13.3.5 Rev B
Checked: TD	Date: 15/01/09	Date:	16/01/09



Legend:
• Noise Receiver Location
Drawing Information Prepared by AWN Ltd.

Rev	By	Date	Description
A	DD	22/04/09	New Alignment
B	CM	29/04/09	Minor Text Amendments

Project: M11 Gorey to Enniscorthy Scheme				
Component: Environmental Impact Statement - Noise				
Title: Fig. 13.3.6 Noise Reciever Locations				
Designed: IA	Date: 18/12/08	File Name: 2057_N&R	Drawing No:	
Drawn: DD	Date: 16/01/09	Original Scale: 1:10,000 @A1	Fig. 13.3.6 Rev B	
Checked: PG	Date: 16/01/09	Date: 16/01/09		



ORIGINAL SIZE A1 H:\AutoCAD\2057 - N11 Gorey to Enniscorthy\ES\Outgoing April 2008\Chapter 13 Drawings\2057_ES_Fig 13.4 Proposed Mitigation-RevB FINAL.dwg



progress in motion



National Development Plan 2007 - 2013



Department of Transport



National Roads Authority
An tÚdará um Bóithre Náisiúnta



WEXFORD COUNTY COUNCIL
County Hall
Wexford



TRAMORE HOUSE
ROAD DESIGN OFFICE
Tramore
Co. Waterford

Ryan Hanley WSP

Sherwood House, Sherwood Avenue, Taylor's Hill
Galway, Ireland
Tel: +353 (0)91 587116 Fax: +353 (0)91 587102
e-mail: rhwsp@ryanhhanley.ie

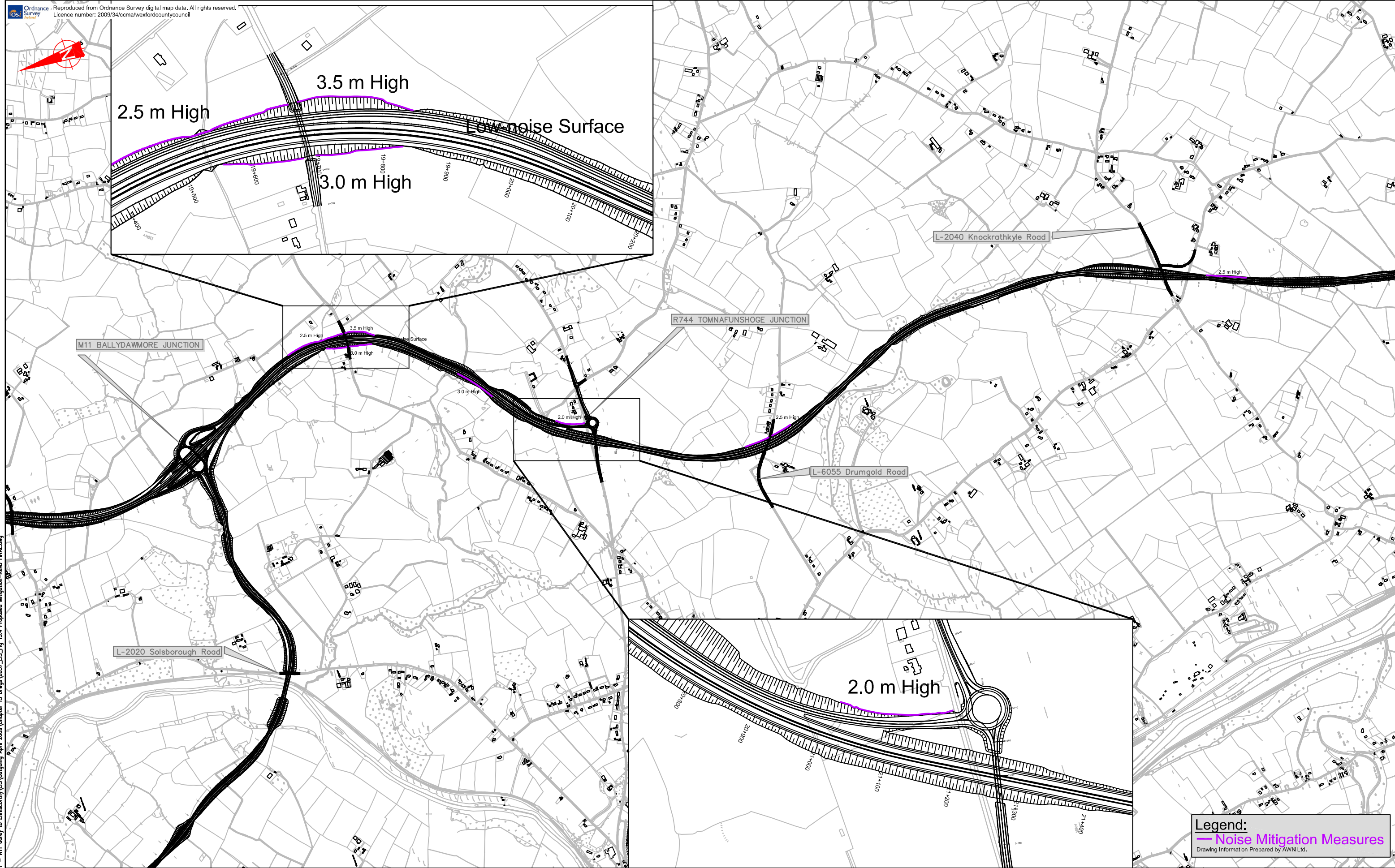
Rev	By	Date	Description
A	DD	22/04/09	Updated Alignment
B	CM	28/04/09	Minor Text Amendments

Project: **M11 Gorey to Enniscorthy Scheme**

Component: **Environmental Impact Statement - Noise**

Title: **Fig. 13.4.1 Noise Mitigation Measures**

Designed: NM	Date: 18/12/08	File Name: 2057_NM	Drawing No:
Drawn: DD	Date: 15/01/09	Original Scale: 1:2500 @ A1	Fig. 13.4.1 Rev B
Checked: TD	Date: 15/01/09	Date: 16/01/09	



ORIGINAL SIZE A1
H:\AutoCAD\2057 - N11 Gorey to Enniscorthy\ES\Outgoing April 2008\Chapter 13 Drawings\2057_ES_Fig 13.4 Proposed Mitigation-RevB FINAL.dwg



progress in motion



National Development Plan 2007 - 2013



Department of Transport



National Roads Authority
An Údarás um Bóithre Náisiúnta



WEXFORD COUNTY COUNCIL
County Hall
Wexford



TRAMORE HOUSE
ROAD DESIGN OFFICE
Tramore
Co. Waterford

Ryan Hanley WSP

Sherwood House, Sherwood Avenue, Taylor's Hill
Galway, Ireland
Tel: +353 (0)91 587116 Fax: +353 (0)91 587102
e-mail: rhwsp@ryanhaley.ie

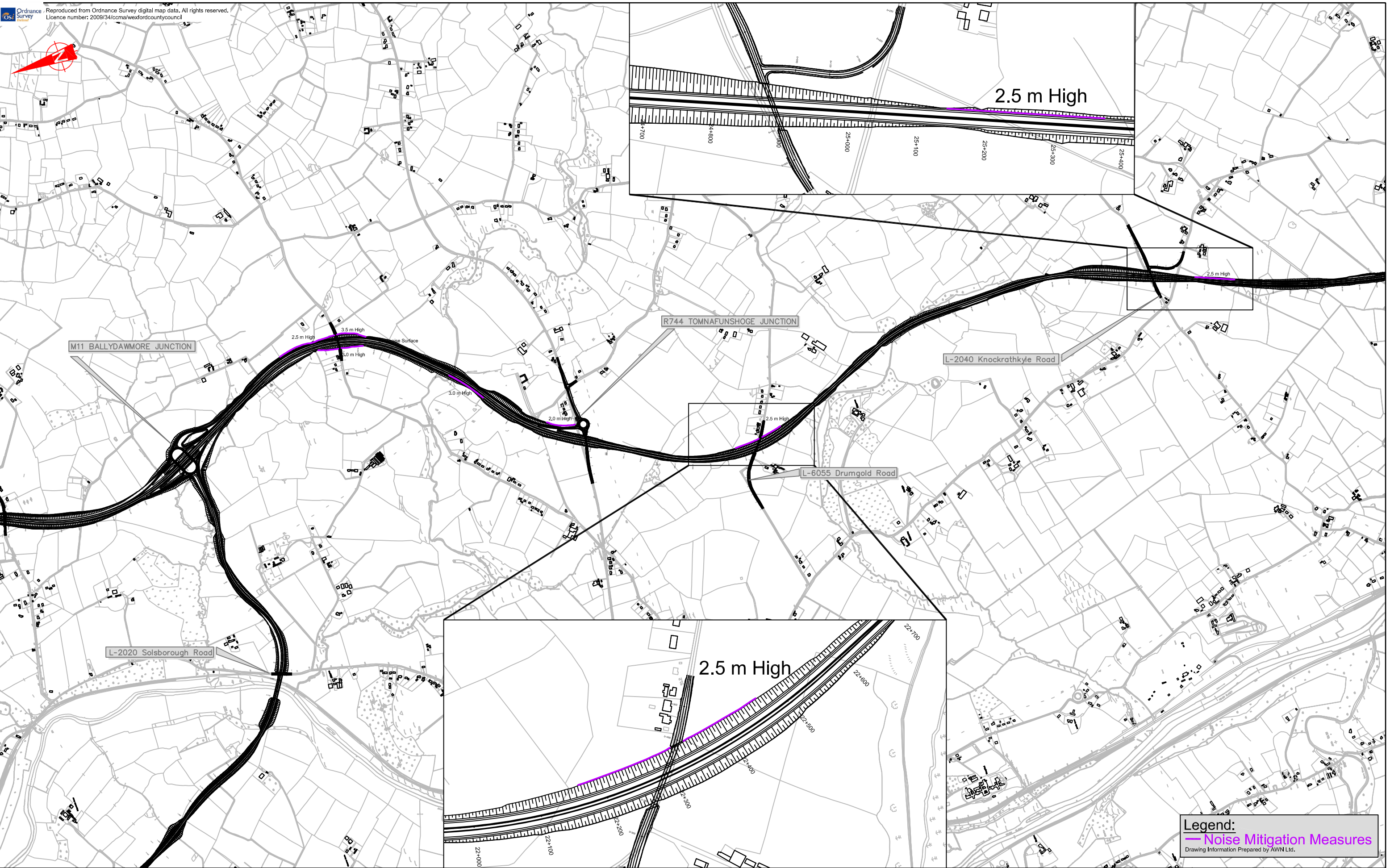
Rev	By	Date	Description
A	DD	22/04/09	Updated Alignment
B	CM	28/04/09	Minor Text Amendments

Project: **M11 Gorey to Enniscorthy Scheme**

Component: **Environmental Impact Statement - Noise**

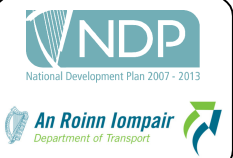
Title: **Fig. 13.4.2 Noise Mitigation Measures**

Designed: NM	Date: 18/12/08	File Name: 2057_NM	Drawing No:
Drawn: DD	Date: 15/01/09	Original Scale: 1:2500 @ A1	Fig. 13.4.2 Rev B
Checked: TD	Date: 15/01/09	Date: 16/01/09	



Legend:
— Noise Mitigation Measures
Drawing Information Prepared by AWN Ltd.

transport21
progress in motion



NRA
National Roads Authority
An Údarás um Bóithre Náisiúnta



WEXFORD COUNTY COUNCIL
County Hall
Wexford



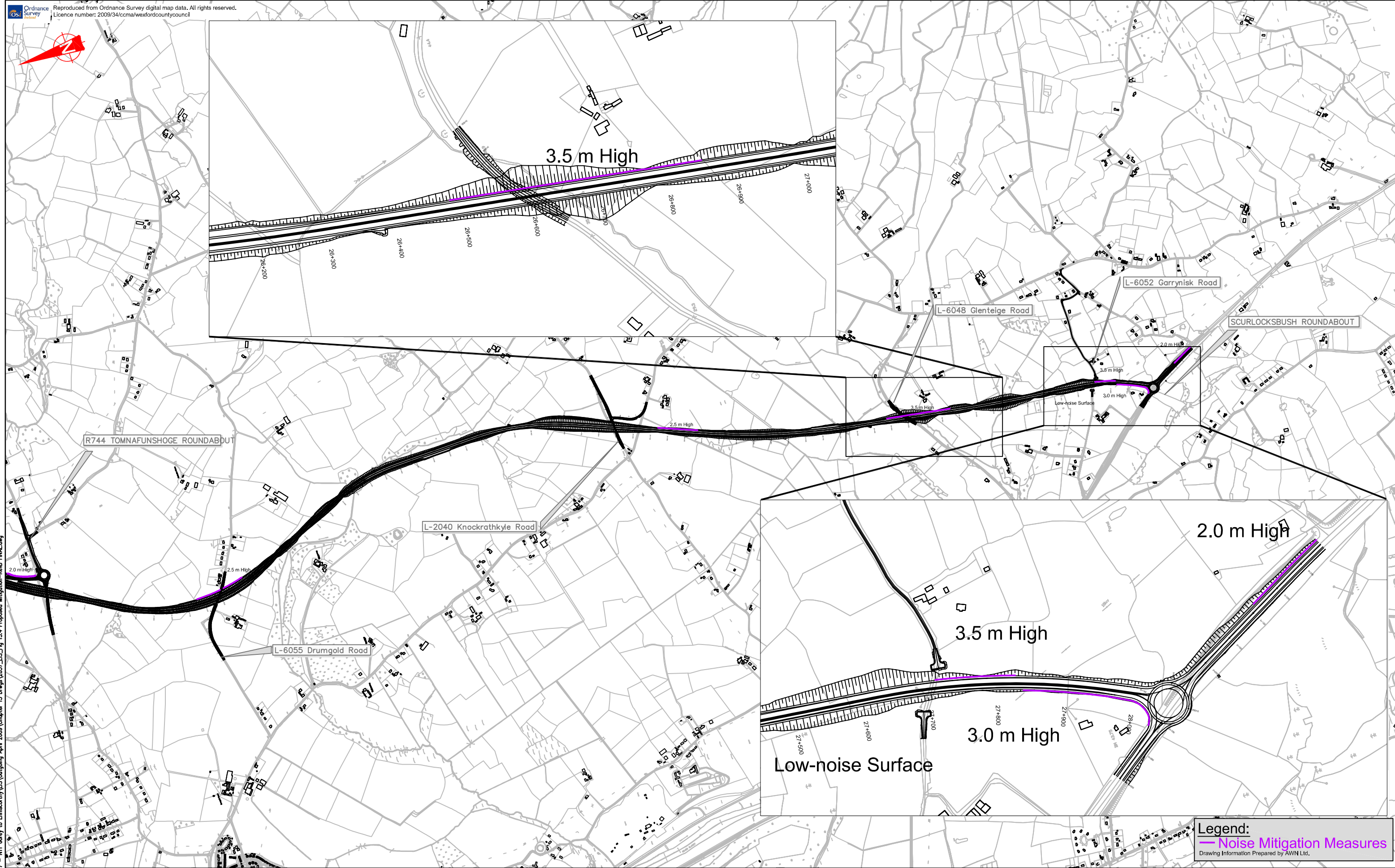
TRAMORE HOUSE
ROAD DESIGN OFFICE
Tramore
Co. Waterford

Ryan Hanley WSP

Sherwood House, Sherwood Avenue, Taylor's Hill
Galway, Ireland
Tel: +353 (0)91 587116 Fax: +353 (0)91 587102
e-mail: rtwsp@ryanhanley.ie

Rev	By	Date	Description
A	DD	22/04/09	Updated Alignment
	CM	28/04/09	Minor Text Amendments

Project: M11 Gorey to Enniscorthy Scheme			
Component: Environmental Impact Statement - Noise			
Title: Fig. 13.4.3 Noise Mitigation Measures			
Designed: NM	Date: 18/12/08	File Name: 2057_NM	Drawing No:
Drawn: DD	Date: 15/01/09	Original Scale: 1:2500 @ A1	Fig. 13.4.3 Rev B
Checked: TD	Date: 15/01/09	Date: 16/01/09	





progress in motion



National Development Plan 2007 - 2013



National Roads Authority
An tÚdará um Boithre Náisiúnta



WEXFORD COUNTY COUNCIL
County Hall
Wexford



TRAMORE HOUSE
ROAD DESIGN OFFICE
Tramore
Co. Waterford

Ryan Hanley WSP

Sherwood House, Sherwood Avenue, Taylor's Hill
Galway, Ireland
Tel: +353 (0)91 587116 Fax: +353 (0)91 587102
e-mail: rhwsp@ryanhhanley.ie

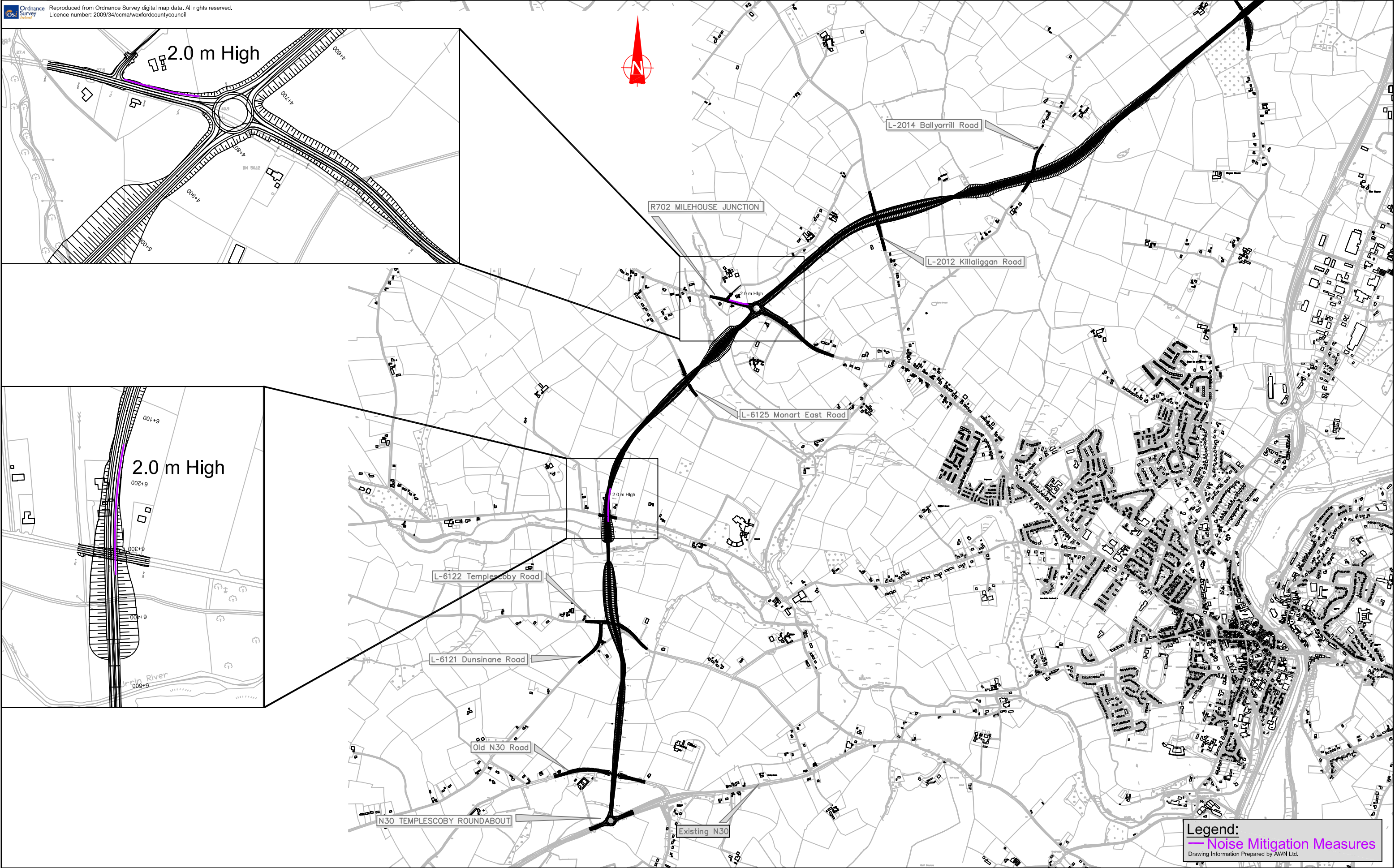
Rev	By	Date	Description
A	DD	22/04/09	Updated Alignment
B	CM	28/04/09	Minor Text Amendments

Project: **M11 Gorey to Enniscorthy Scheme**

Component: **Environmental Impact Statement- Noise**

Title: **Fig. 13.4.4 Noise Mitigation Measures**

Designed: NM	Date: 18/12/08	File Name: 2057_NM	Drawing No:
Drawn: DD	Date: 15/01/09	Original Scale: 1:2500 @ A1	Fig. 13.4.4 Rev B
Checked: TD	Date: 15/01/09	Date: 16/01/09	



Legend:
— Noise Mitigation Measures
Drawing Information Prepared by AWW Ltd.

transport21
progress in motion

NDP
National Development Plan 2007 - 2013
An Roinn Iompair
Department of Transport

NRA
National Roads Authority
An Údarás um Bóithre Náisiúnta



WEXFORD COUNTY COUNCIL
County Hall
Wexford



TRAMORE HOUSE ROAD DESIGN OFFICE
Tramore
Co. Waterford

Ryan Hanley WSP

Sherwood House, Sherwood Avenue, Taylor's Hill
Galway, Ireland
Tel: +353 (0)91 587116 Fax: +353 (0)91 587102
e-mail: rhwsp@ryanhaley.ie

Rev	By	Date	Description
A	DD	22/04/09	Updated Alignment
B	CM	28/04/09	Minor Text Amendments

Project: M11 Gorey to Enniscorthy Scheme			
Component: Environmental Impact Statement - Noise			
Title: Fig. 13.4.5 Noise Mitigation Measures			
Designed: IA	Date: 18/12/08	File Name: 2057_NM	Drawing No:
Drawn: DD	Date: 16/01/09	Original Scale: 1:10,000 @A1	Fig. 13.4.5 Rev B
Checked: PG	Date: 16/01/09	Date: 16/01/09	